

Data Path : Z:\pestpcbsrv\HPCHEM1\FID\_C\Data\FC100318AL\  
 Data File : FC036635.D  
 Signal(s) : FID1A.CH  
 Acq On : 03 Oct 2018 15:03  
 Operator : AJ\SJ  
 Sample : J5198-07  
 Misc :  
 ALS Vial : 6 Sample Multiplier: 1

Integration File: autoint1.e  
 Quant Time: Oct 04 03:23:27 2018  
 Quant Method : Z:\PESTPCBSRV\HPCHEM1\FID\_C\Method\Alaphatic EPH 092118.M  
 Quant Title : GC Extractables  
 QLast Update : Fri Sep 21 15:20:52 2018  
 Response via : Initial Calibration  
 Integrator: ChemStation 6890 Scale Mode: Large solvent peaks clipped

Volume Inj. : 1 ul  
 Signal Phase : Rxi-1ms  
 Signal Info : 20M x 0.18mm x 0.18um

Compound	R.T.	Response	Conc Units
System Monitoring Compounds			
9) S ortho-Terphenyl (SURR)	11.383	2719522	22.367 ug/mlm
Spiked Amount	50.000	Recovery =	44.73%
12) S 1-chlorooctadecane (S...	12.824	2152600	22.861 ug/mlm
Spiked Amount	50.000	Recovery =	45.72%

Target Compounds

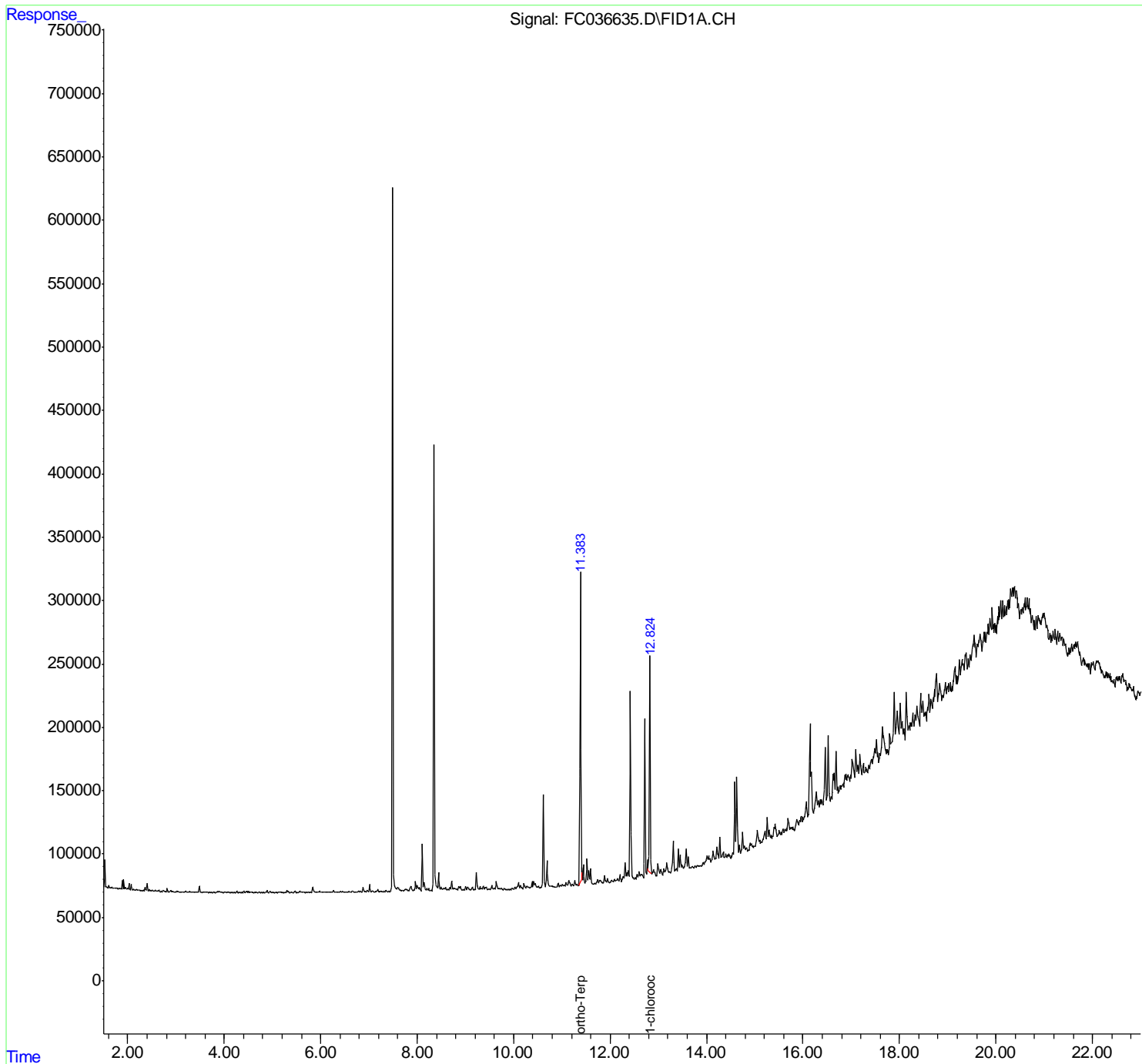
(f)=RT Delta > 1/2 Window

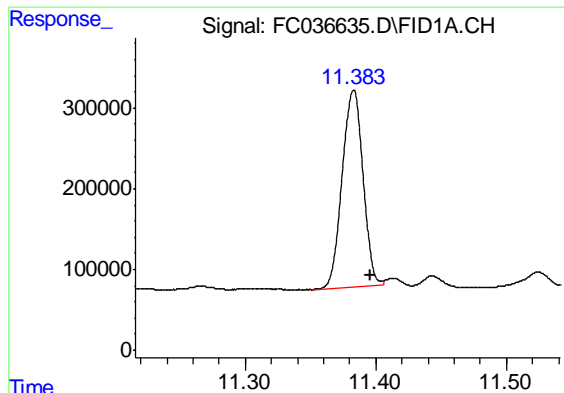
(m)=manual int.

Data Path : Z:\pestpcbsrv\HPCHEM1\FID\_C\Data\FC100318AL\  
Data File : FC036635.D  
Signal(s) : FID1A.CH  
Acq On : 03 Oct 2018 15:03  
Operator : AJ\SJ  
Sample : J5198-07  
Misc :  
ALS Vial : 6 Sample Multiplier: 1

Integration File: autoint1.e  
Quant Time: Oct 04 03:23:27 2018  
Quant Method : Z:\PESTPCBSRV\HPCHEM1\FID\_C\Method\Alaphatic EPH 092118.M  
Quant Title : GC Extractables  
QLast Update : Fri Sep 21 15:20:52 2018  
Response via : Initial Calibration  
Integrator: ChemStation 6890 Scale Mode: Large solvent peaks clipped

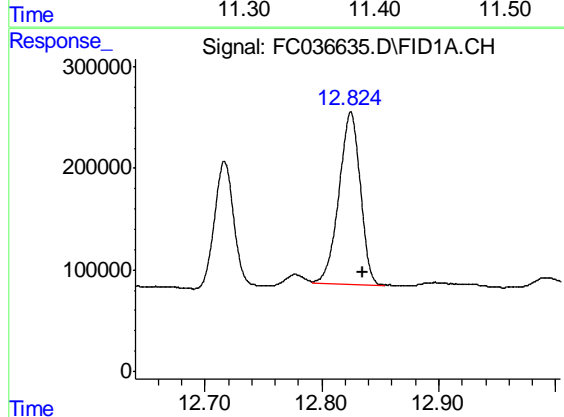
Volume Inj. : 1 ul  
Signal Phase : Rxi-1ms  
Signal Info : 20M x 0.18mm x 0.18um





#9 ortho-Terphenyl (SURR)

R.T.: 11.383 min  
Delta R.T.: -0.012 min  
Response: 2719522  
Conc: 22.37 ug/ml m



#12 1-chlorooctadecane (SURR)

R.T.: 12.824 min  
Delta R.T.: -0.011 min  
Response: 2152600  
Conc: 22.86 ug/ml m