

Data Path : Z:\pestpcbsrv\HPCHEM1\FID_C\Data\FC100521AL\
 Data File : FC055990.D
 Signal(s) : FID1A.CH
 Acq On : 05 Oct 2021 16:33
 Operator : AJ\MA
 Sample : M4042-06DL 10X
 Misc :
 ALS Vial : 12 Sample Multiplier: 1

Integration File: autoint1.e
 Quant Time: Oct 05 23:58:51 2021
 Quant Method : Z:\pestpcbsrv\HPCHEM1\FID_C\Method\Aliphatic EPH 092921.M
 Quant Title : GC Extractables
 QLast Update : Thu Sep 30 01:25:44 2021
 Response via : Initial Calibration
 Integrator: ChemStation 6890 Scale Mode: Large solvent peaks clipped

Volume Inj. : 1 ul
 Signal Phase : Rxi-1ms
 Signal Info : 20M x 0.18mm x 0.18um

Compound	R.T.	Response	Conc Units

System Monitoring Compounds			
9) S ortho-Terphenyl (SURR)	11.648	326941	2.755 ug/ml
Spiked Amount	50.000	Recovery =	5.51%
12) S 1-chlorooctadecane (S...	13.081	266115	2.897 ug/mlm
Spiked Amount	50.000	Recovery =	5.79%

Target Compounds

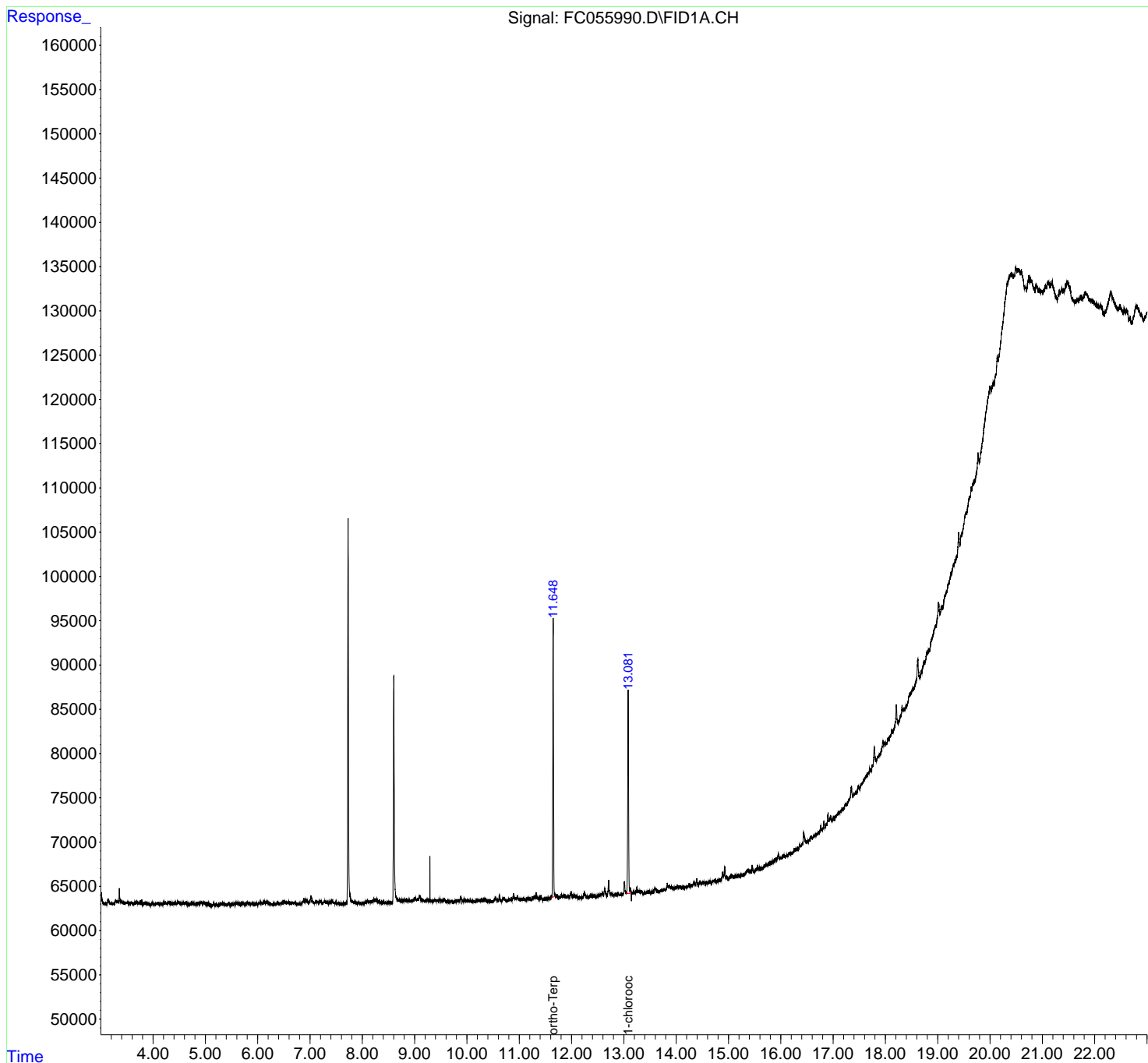
(f)=RT Delta > 1/2 Window

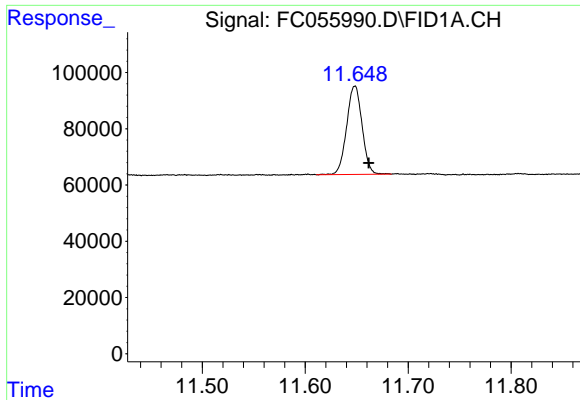
(m)=manual int.

Data Path : Z:\pestpcbsrv\HPCHEM1\FID_C\Data\FC100521AL\
Data File : FC055990.D
Signal(s) : FID1A.CH
Acq On : 05 Oct 2021 16:33
Operator : AJ\MA
Sample : M4042-06DL 10X
Misc :
ALS Vial : 12 Sample Multiplier: 1

Integration File: autoint1.e
Quant Time: Oct 05 23:58:51 2021
Quant Method : Z:\pestpcbsrv\HPCHEM1\FID_C\Method\Aliphatic EPH 092921.M
Quant Title : GC Extractables
QLast Update : Thu Sep 30 01:25:44 2021
Response via : Initial Calibration
Integrator: ChemStation 6890 Scale Mode: Large solvent peaks clipped

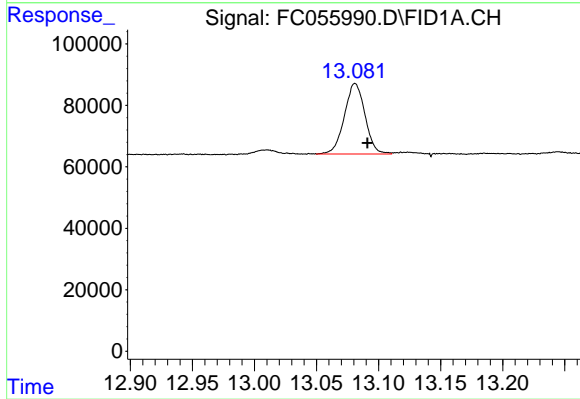
Volume Inj. : 1 ul
Signal Phase : Rxi-1ms
Signal Info : 20M x 0.18mm x 0.18um





#9 ortho-Terphenyl (SURR)

R.T.: 11.648 min
Delta R.T.: -0.014 min
Response: 326941
Conc: 2.76 ug/ml



#12 1-chlorooctadecane (SURR)

R.T.: 13.081 min
Delta R.T.: -0.010 min
Response: 266115
Conc: 2.90 ug/ml m