

Data Path : Z:\pestpcbsrv\HPCHEM1\FID_C\Data\FC100821AL\
 Data File : FC056054.D
 Signal(s) : FID1A.CH
 Acq On : 08 Oct 2021 9:58
 Operator : AJ\MA
 Sample : 20 PPM ALIPHATIC HC STD
 Misc :
 ALS Vial : 2 Sample Multiplier: 1

Instrument :
 FID_C
 ClientSampleId :
 20 PPM ALIPHATIC HC STD

Integration File: sample.E
 Quant Time: Oct 09 03:01:25 2021
 Quant Method : Z:\pestpcbsrv\HPCHEM1\FID_C\Method\Aliphatic EPH 092921.M
 Quant Title : GC Extractables
 QLast Update : Thu Sep 30 01:25:44 2021
 Response via : Initial Calibration
 Integrator: ChemStation 6890 Scale Mode: Large solvent peaks clipped

Volume Inj. : 1 ul
 Signal Phase : Rxi-1ms
 Signal Info : 20M x 0.18mm x 0.18um

Compound	R.T.	Response	Conc Units

System Monitoring Compounds			
9) S ortho-Terphenyl (SURR)	11.642	2177944	18.354 ug/ml
Spiked Amount	50.000	Recovery	= 36.71%
12) S 1-chlorooctadecane (S...	13.073	1680708	18.294 ug/ml
Spiked Amount	50.000	Recovery	= 36.59%
Target Compounds			
1) T n-Nonane (C9)	3.391	2239096	20.982 ug/ml
2) T n-Decane (C10)	4.461	2271727	21.252 ug/ml
3) T A~Naphthalene (C11.7)	6.056	2457402	20.424 ug/ml
4) T n-Dodecane (C12)	6.482	2250723	20.736 ug/ml
5) T A~2-methylnaphthalene...	7.114	2424851	19.962 ug/ml
6) T n-Tetradecane (C14)	8.279	2205997	19.939 ug/ml
7) T n-Hexadecane (C16)	9.879	2146682	19.393 ug/ml
8) T n-Octadecane (C18)	11.320	2123148	18.970 ug/ml
10) T n-Eicosane (C20)	12.628	2026662	18.555 ug/ml
11) T n-Heneicosane (C21)	13.239	2009286	18.481 ug/ml
13) T n-Docosane (C22)	13.824	1966185	18.410 ug/ml
14) T n-Tetracosane (C24)	14.925	1949636	18.645 ug/ml
15) T n-Hexacosane (C26)	15.944	1901706	18.927 ug/ml
16) T n-Octacosane (C28)	16.892	1901627	19.659 ug/ml
17) T n-Tricontane (C30)	17.776	1922991	20.725 ug/ml
18) T n-Dotriacontane (C32)	18.607	1914276	21.531 ug/ml
19) T n-Tetratriacontane (C34)	19.390	1905689	22.034 ug/ml
20) T n-Hexatriacontane (C36)	20.124	1838880	22.507 ug/ml
21) T n-Octatriacontane (C38)	20.866	1808897	22.700 ug/ml
22) T n-Tetracontane (C40)	21.791	1772385	22.110 ug/ml

(f)=RT Delta > 1/2 Window

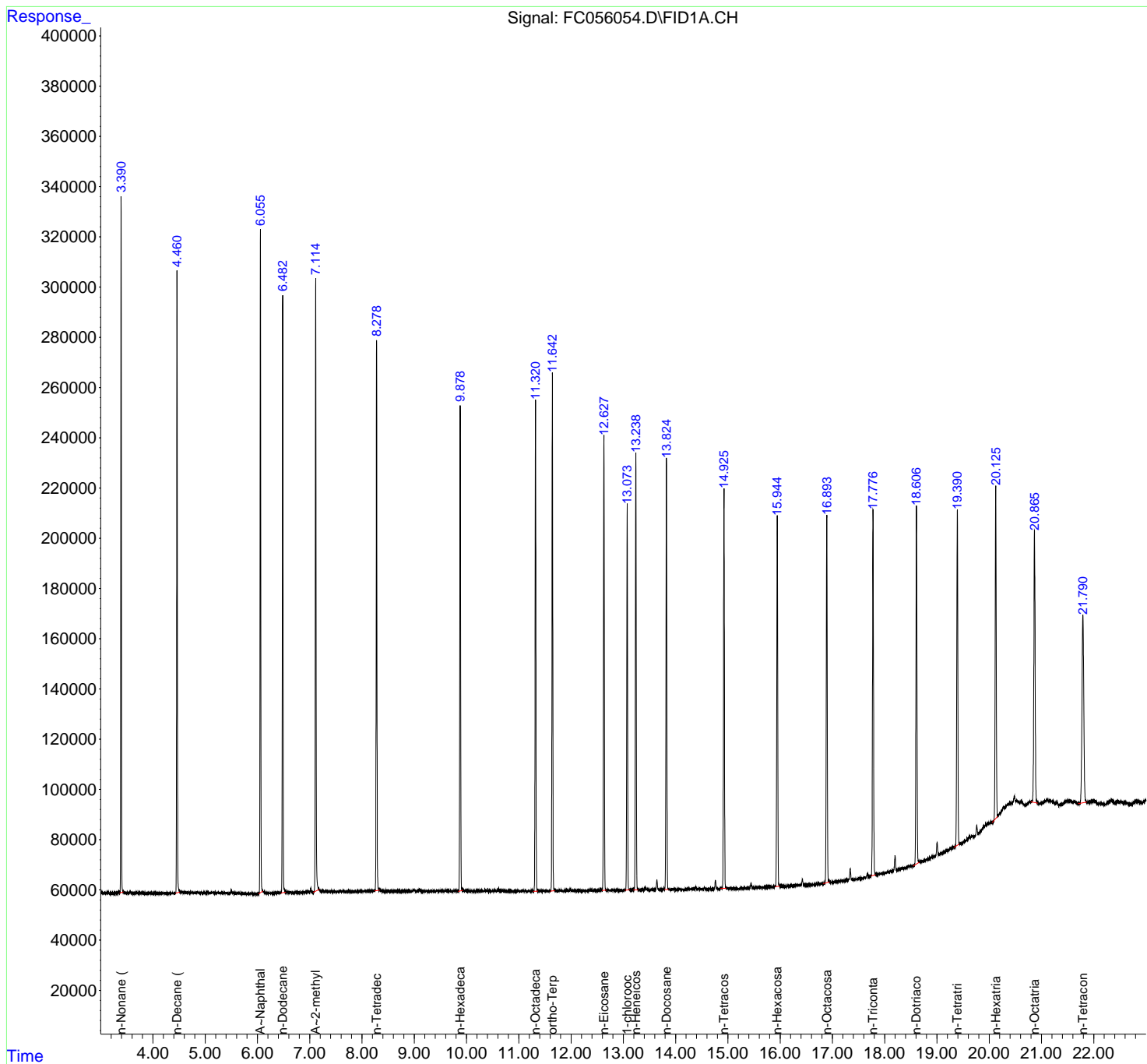
(m)=manual int.

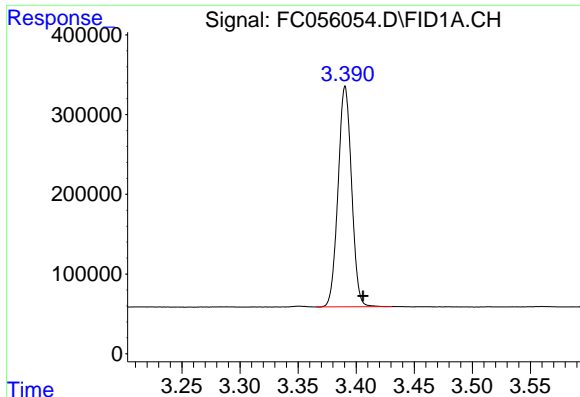
Data Path : Z:\pestpcbsrv\HPCHEM1\FID_C\Data\FC100821AL\
 Data File : FC056054.D
 Signal(s) : FID1A.CH
 Acq On : 08 Oct 2021 9:58
 Operator : AJ\MA
 Sample : 20 PPM ALIPHATIC HC STD
 Misc :
 ALS Vial : 2 Sample Multiplier: 1

Instrument :
 FID_C
 Client Sampled :
 20 PPM ALIPHATIC HC STD

Integration File: sample.E
 Quant Time: Oct 09 03:01:25 2021
 Quant Method : Z:\pestpcbsrv\HPCHEM1\FID_C\Method\Aliphatic EPH 092921.M
 Quant Title : GC Extractables
 QLast Update : Thu Sep 30 01:25:44 2021
 Response via : Initial Calibration
 Integrator: ChemStation 6890 Scale Mode: Large solvent peaks clipped

Volume Inj. : 1 ul
 Signal Phase : Rxi-1ms
 Signal Info : 20M x 0.18mm x 0.18um

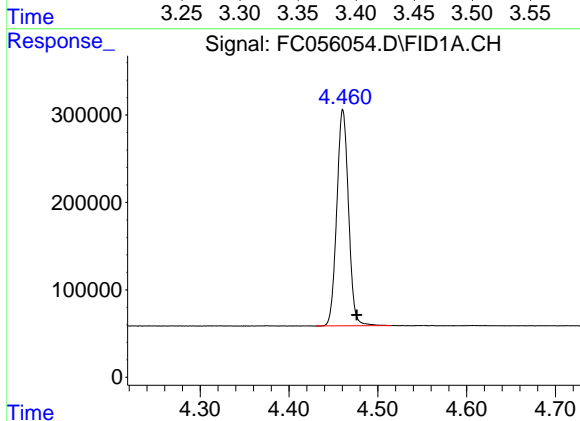




#1 n-Nonane (C9)

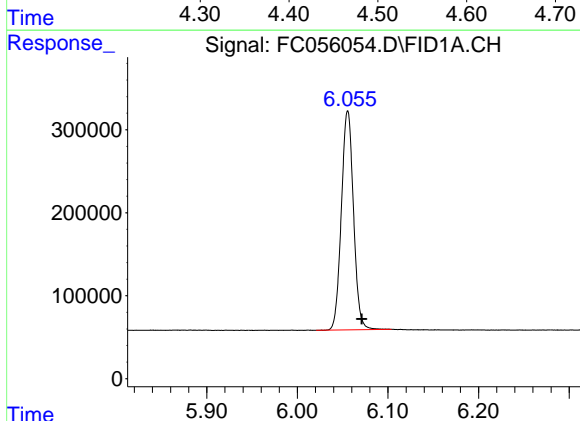
R.T.: 3.391 min
Delta R.T.: -0.015 min
Response: 2239096
Conc: 20.98 ug/ml

Instrument :
FID_C
ClientSampleId :
20 PPM ALIPHATIC HC STD



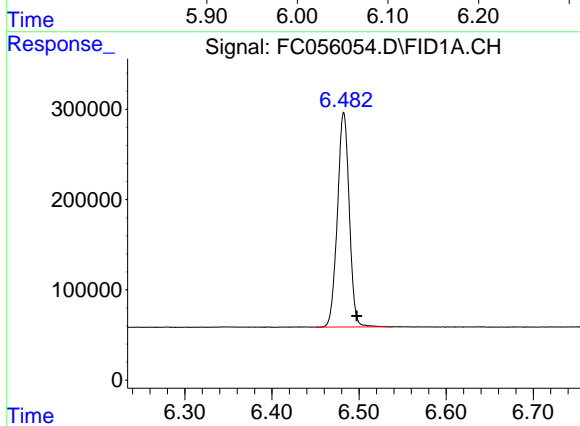
#2 n-Decane (C10)

R.T.: 4.461 min
Delta R.T.: -0.015 min
Response: 2271727
Conc: 21.25 ug/ml



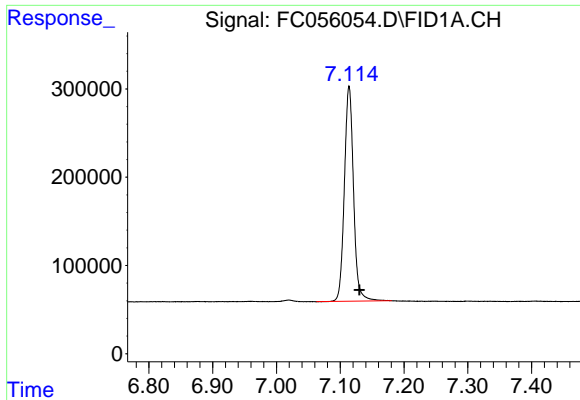
#3 A~Naphthalene (C11.7)

R.T.: 6.056 min
Delta R.T.: -0.015 min
Response: 2457402
Conc: 20.42 ug/ml



#4 n-Dodecane (C12)

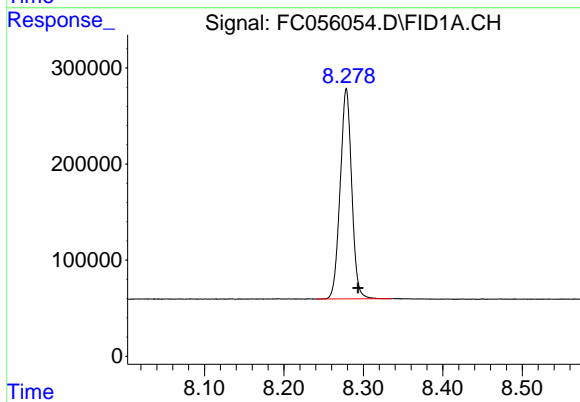
R.T.: 6.482 min
Delta R.T.: -0.015 min
Response: 2250723
Conc: 20.74 ug/ml



#5 A~2-methylnaphthalene (C12.89)

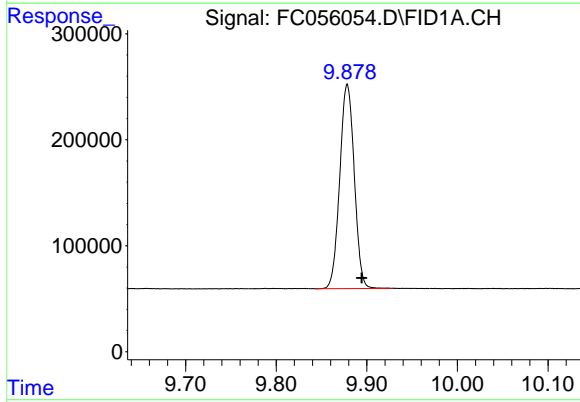
R.T.: 7.114 min
 Delta R.T.: -0.016 min
 Response: 2424851
 Conc: 19.96 ug/ml

Instrument :
 FID_C
ClientSampleId :
 20 PPM ALIPHATIC HC STD



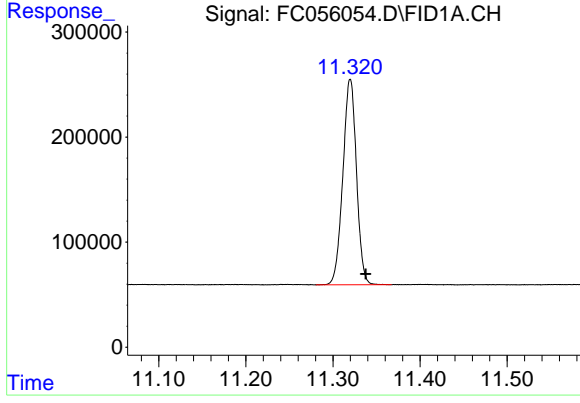
#6 n-Tetradecane (C14)

R.T.: 8.279 min
 Delta R.T.: -0.015 min
 Response: 2205997
 Conc: 19.94 ug/ml



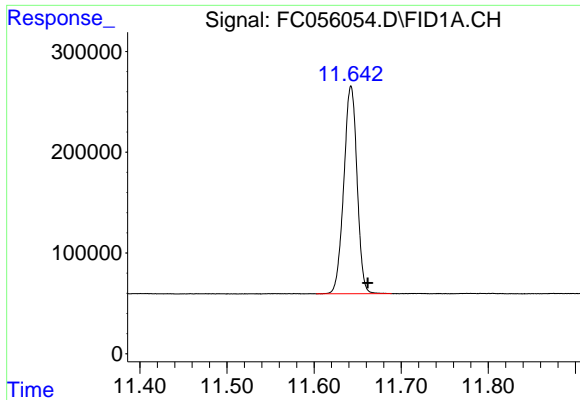
#7 n-Hexadecane (C16)

R.T.: 9.879 min
 Delta R.T.: -0.016 min
 Response: 2146682
 Conc: 19.39 ug/ml



#8 n-Octadecane (C18)

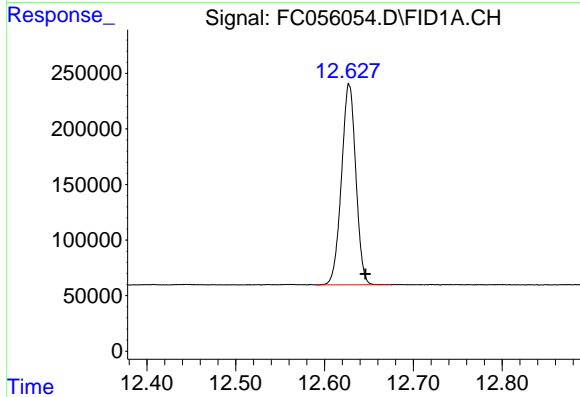
R.T.: 11.320 min
 Delta R.T.: -0.018 min
 Response: 2123148
 Conc: 18.97 ug/ml



#9 ortho-Terphenyl (SURR)

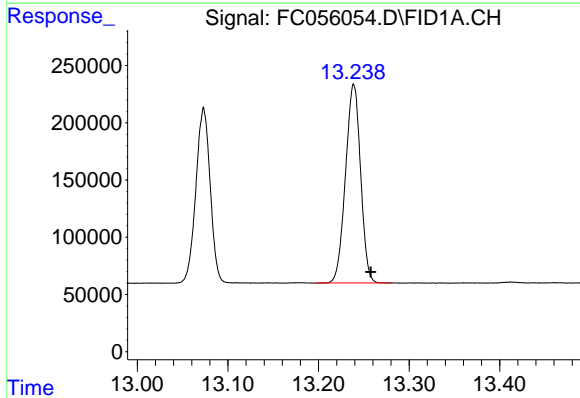
R.T.: 11.642 min
 Delta R.T.: -0.019 min
 Response: 2177944
 Conc: 18.35 ug/ml

Instrument :
 FID_C
 ClientSampleId :
 20 PPM ALIPHATIC HC STD



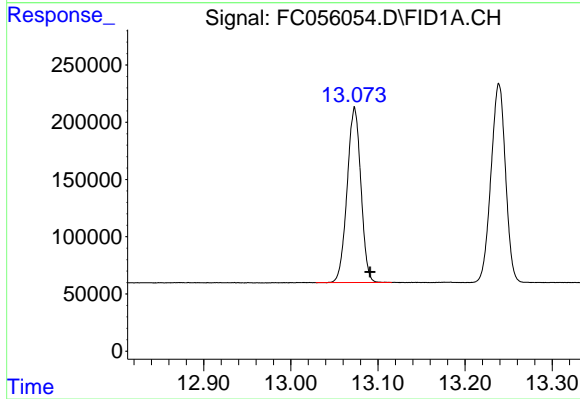
#10 n-Eicosane (C20)

R.T.: 12.628 min
 Delta R.T.: -0.018 min
 Response: 2026662
 Conc: 18.55 ug/ml



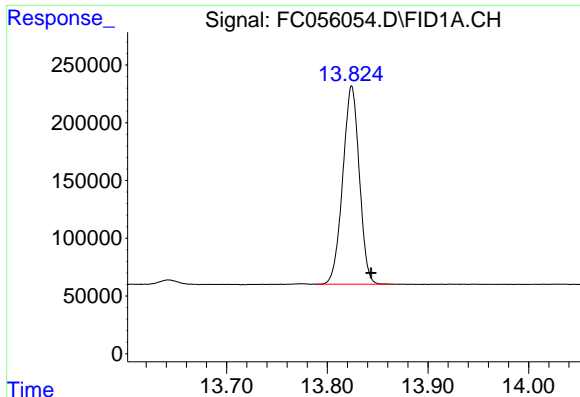
#11 n-Heneicosane (C21)

R.T.: 13.239 min
 Delta R.T.: -0.019 min
 Response: 2009286
 Conc: 18.48 ug/ml



#12 1-chlorooctadecane (SURR)

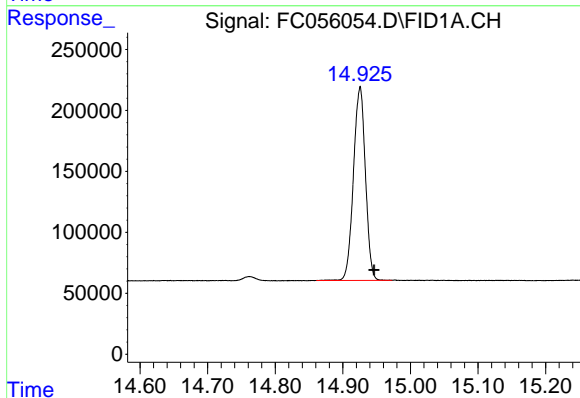
R.T.: 13.073 min
 Delta R.T.: -0.018 min
 Response: 1680708
 Conc: 18.29 ug/ml



#13 n-Docosane (C22)

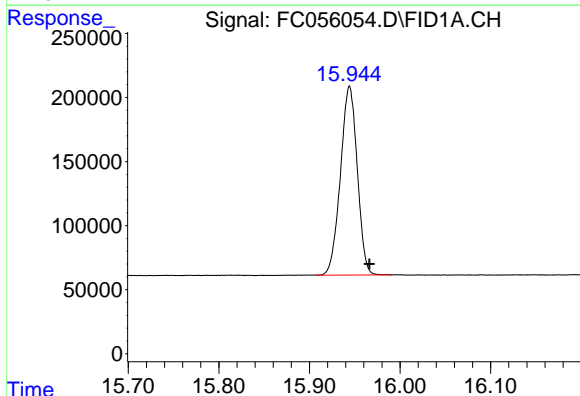
R.T.: 13.824 min
Delta R.T.: -0.019 min
Response: 1966185
Conc: 18.41 ug/ml

Instrument :
FID_C
ClientSampleId :
20 PPM ALIPHATIC HC STD



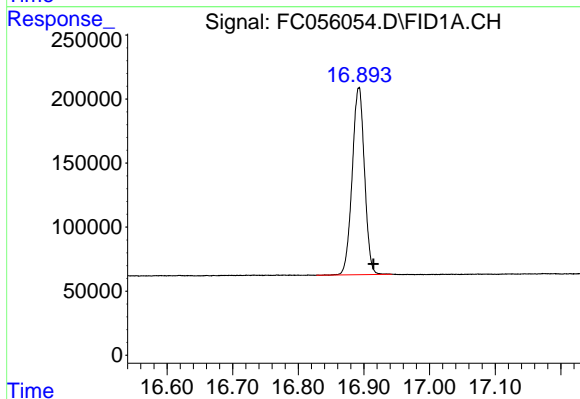
#14 n-Tetracosane (C24)

R.T.: 14.925 min
Delta R.T.: -0.021 min
Response: 1949636
Conc: 18.64 ug/ml



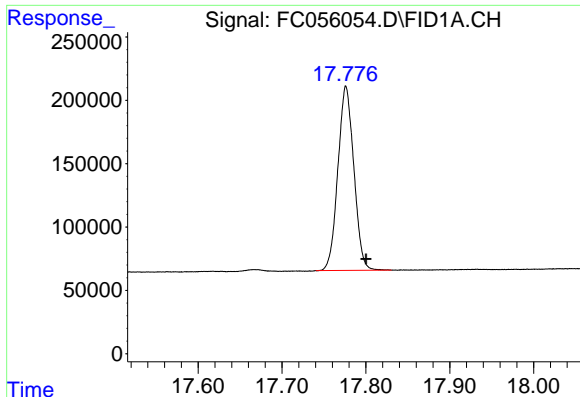
#15 n-Hexacosane (C26)

R.T.: 15.944 min
Delta R.T.: -0.022 min
Response: 1901706
Conc: 18.93 ug/ml



#16 n-Octacosane (C28)

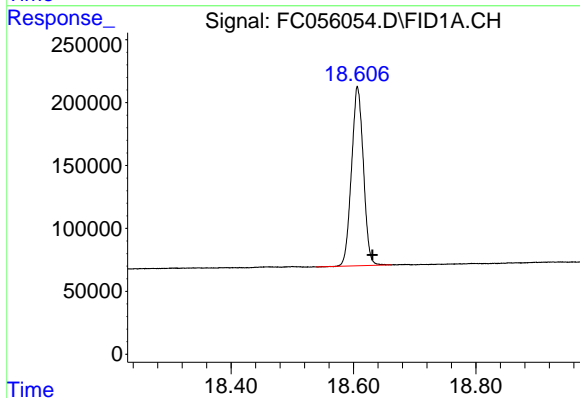
R.T.: 16.892 min
Delta R.T.: -0.022 min
Response: 1901627
Conc: 19.66 ug/ml



#17 n-Tricontane (C30)

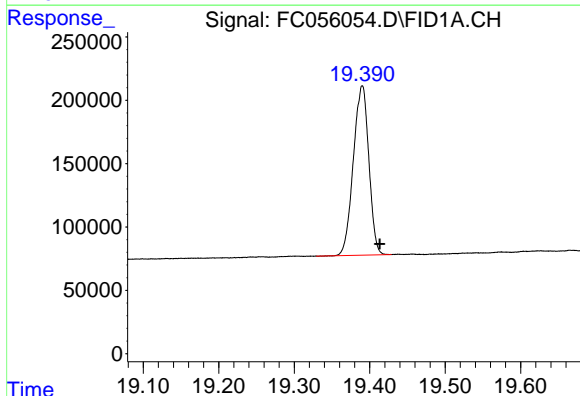
R.T.: 17.776 min
Delta R.T.: -0.024 min
Response: 1922991
Conc: 20.73 ug/ml

Instrument :
FID_C
ClientSampleId :
20 PPM ALIPHATIC HC STD



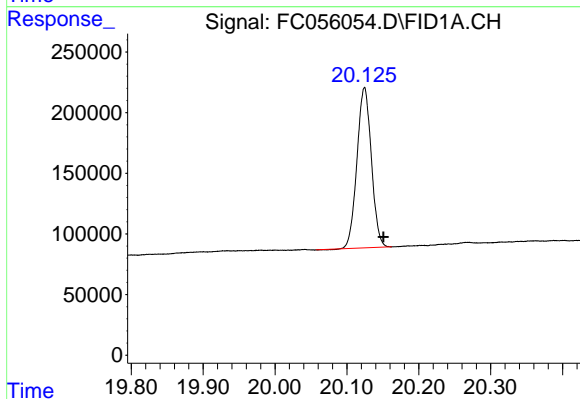
#18 n-Dotriacontane (C32)

R.T.: 18.607 min
Delta R.T.: -0.024 min
Response: 1914276
Conc: 21.53 ug/ml



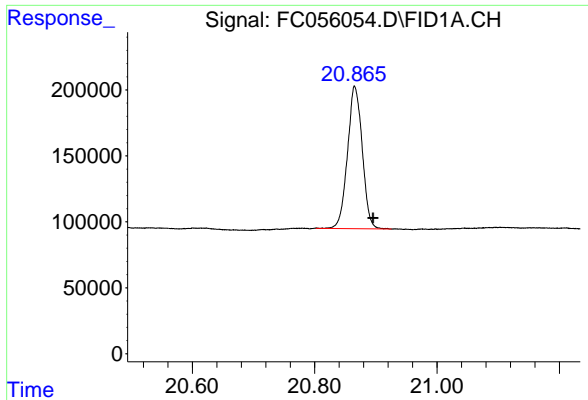
#19 n-Tetratriacontane (C34)

R.T.: 19.390 min
Delta R.T.: -0.023 min
Response: 1905689
Conc: 22.03 ug/ml



#20 n-Hexatriacontane (C36)

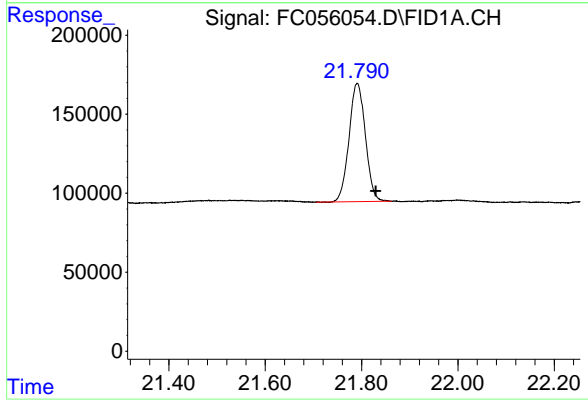
R.T.: 20.124 min
Delta R.T.: -0.026 min
Response: 1838880
Conc: 22.51 ug/ml



#21 n-Octatriacontane (C38)

R.T.: 20.866 min
Delta R.T.: -0.030 min
Response: 1808897
Conc: 22.70 ug/ml

Instrument :
FID_C
ClientSampleId :
20 PPM ALIPHATIC HC STD



#22 n-Tetracontane (C40)

R.T.: 21.791 min
Delta R.T.: -0.038 min
Response: 1772385
Conc: 22.11 ug/ml