

Data Path : Z:\pestpcbsrv\HPCHEM1\FID\_C\Data\FC101121AL\  
 Data File : FC056105.D  
 Signal(s) : FID1A.CH  
 Acq On : 11 Oct 2021 22:45  
 Operator : AJ\MA  
 Sample : M4127-04  
 Misc :  
 ALS Vial : 18 Sample Multiplier: 1

Instrument :  
 FID\_C  
 ClientSampleId :

Integration File: autoint1.e  
 Quant Time: Oct 12 03:12:29 2021  
 Quant Method : Z:\pestpcbsrv\HPCHEM1\FID\_C\Method\Aliphatic EPH 092921.M  
 Quant Title : GC Extractables  
 QLast Update : Thu Sep 30 01:25:44 2021  
 Response via : Initial Calibration  
 Integrator: ChemStation 6890 Scale Mode: Large solvent peaks clipped

Volume Inj. : 1 ul  
 Signal Phase : Rxi-1ms  
 Signal Info : 20M x 0.18mm x 0.18um

Compound	R.T.	Response	Conc Units
-----			
System Monitoring Compounds			
9) S ortho-Terphenyl (SURR)	11.644	4999315	42.131 ug/ml
Spiked Amount	50.000	Recovery	= 84.26%
12) S 1-chlorooctadecane (S...	13.076	3778371	41.126 ug/ml
Spiked Amount	50.000	Recovery	= 82.25%
Target Compounds			
3) T A~Naphthalene (C11.7)	6.101	616548	5.124 ug/ml
10) T n-Eicosane (C20)	12.703f	209102	1.914 ug/ml
11) T n-Heneicosane (C21)	13.288	711714	6.546 ug/ml
-----			

(f)=RT Delta > 1/2 Window

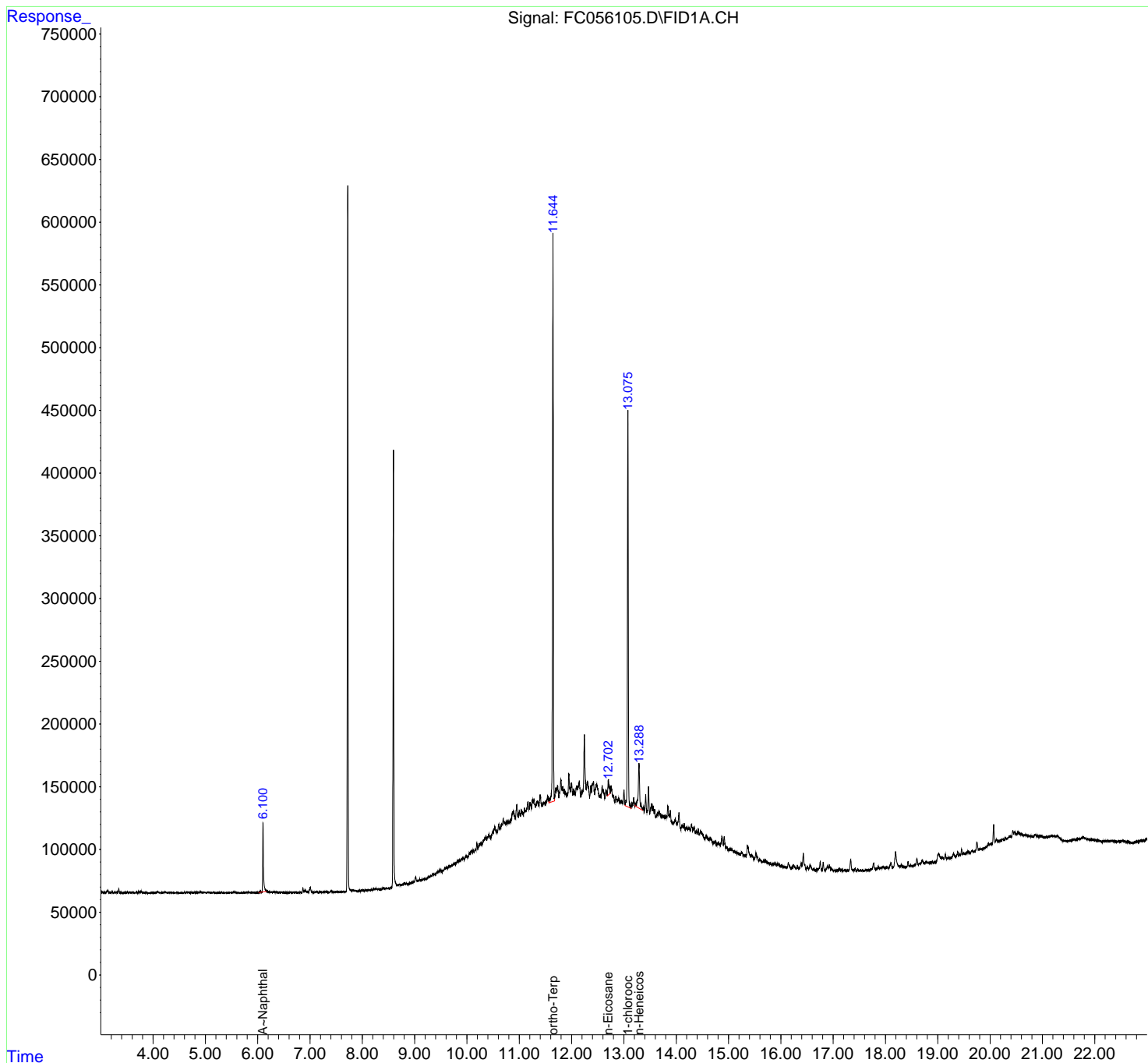
(m)=manual int.

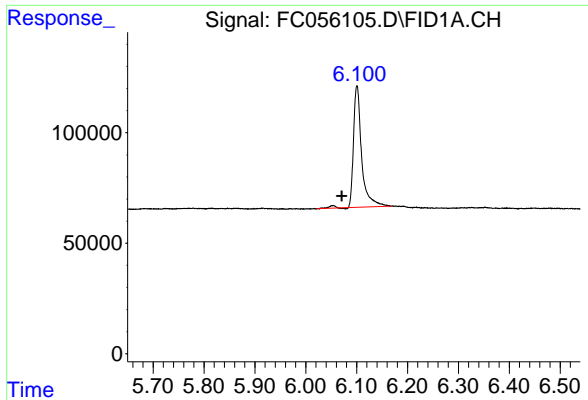
Data Path : Z:\pestpcbsrv\HPCHEM1\FID\_C\Data\FC101121AL\  
 Data File : FC056105.D  
 Signal(s) : FID1A.CH  
 Acq On : 11 Oct 2021 22:45  
 Operator : AJ\MA  
 Sample : M4127-04  
 Misc :  
 ALS Vial : 18 Sample Multiplier: 1

Instrument :  
 FID\_C  
 ClientSampleId :

Integration File: autoint1.e  
 Quant Time: Oct 12 03:12:29 2021  
 Quant Method : Z:\pestpcbsrv\HPCHEM1\FID\_C\Method\Aliphatic EPH 092921.M  
 Quant Title : GC Extractables  
 QLast Update : Thu Sep 30 01:25:44 2021  
 Response via : Initial Calibration  
 Integrator: ChemStation 6890 Scale Mode: Large solvent peaks clipped

Volume Inj. : 1 ul  
 Signal Phase : Rxi-1ms  
 Signal Info : 20M x 0.18mm x 0.18um



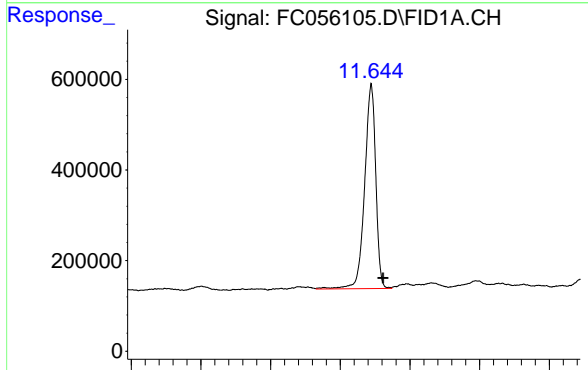


#3 A~Naphthalene (C11.7)

R.T.: 6.101 min  
 Delta R.T.: 0.030 min  
 Response: 616548  
 Conc: 5.12 ug/ml

Instrument :  
 FID\_C  
 ClientSampled :

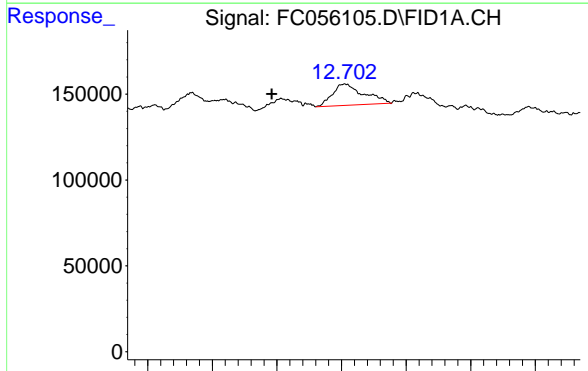
Time 5.70 5.80 5.90 6.00 6.10 6.20 6.30 6.40 6.50



#9 ortho-Terphenyl (SURR)

R.T.: 11.644 min  
 Delta R.T.: -0.017 min  
 Response: 4999315  
 Conc: 42.13 ug/ml

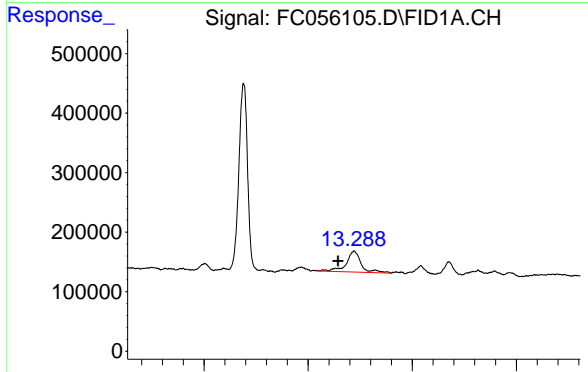
Time 11.30 11.40 11.50 11.60 11.70 11.80 11.90



#10 n-Eicosane (C20)

R.T.: 12.703 min  
 Delta R.T.: 0.057 min  
 Response: 209102  
 Conc: 1.91 ug/ml

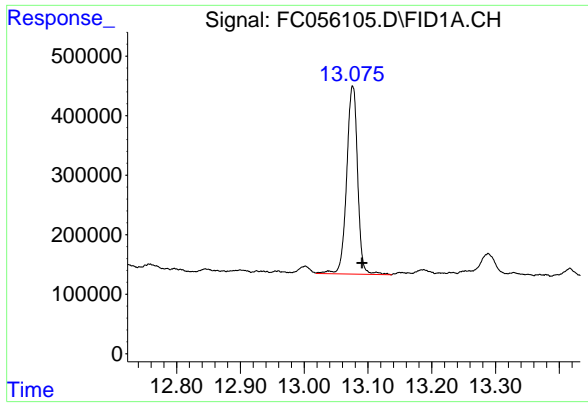
Time 12.55 12.60 12.65 12.70 12.75 12.80 12.85



#11 n-Heneicosane (C21)

R.T.: 13.288 min  
 Delta R.T.: 0.030 min  
 Response: 711714  
 Conc: 6.55 ug/ml

Time 13.00 13.20 13.40 13.60



#12 1-chlorooctadecane (SURR)

R.T.: 13.076 min  
Delta R.T.: -0.015 min  
Response: 3778371  
Conc: 41.13 ug/ml

Instrument :  
FID\_C  
ClientSampleId :