

Data Path : Z:\pestpcbsrv\HPCHEM1\FID\_C\Data\FC101220AL\  
 Data File : FC050021.D  
 Signal(s) : FID1A.CH  
 Acq On : 12 Oct 2020 13:06  
 Operator : DD\AJ  
 Sample : L4317-01DL 25X  
 Misc :  
 ALS Vial : 6 Sample Multiplier: 1

Integration File: sample.E  
 Quant Time: Oct 12 15:36:11 2020  
 Quant Method : Z:\pestpcbsrv\HPCHEM1\FID\_C\Method\Alaphatic EPH 100620.M  
 Quant Title : GC Extractables  
 QLast Update : Wed Oct 07 04:53:04 2020  
 Response via : Initial Calibration  
 Integrator: ChemStation 6890 Scale Mode: Large solvent peaks clipped

Volume Inj. : 1 ul  
 Signal Phase : Rxi-1ms  
 Signal Info : 20M x 0.18mm x 0.18um

Compound	R.T.	Response	Conc Units
-----			
System Monitoring Compounds			
9) S ortho-Terphenyl (SURR)	11.645	245440	2.190 ug/mlm
Spiked Amount	50.000	Recovery =	4.38%
12) S 1-chlorooctadecane (S...	13.078	125592	1.450 ug/ml
Spiked Amount	50.000	Recovery =	2.90%

Target Compounds

-----

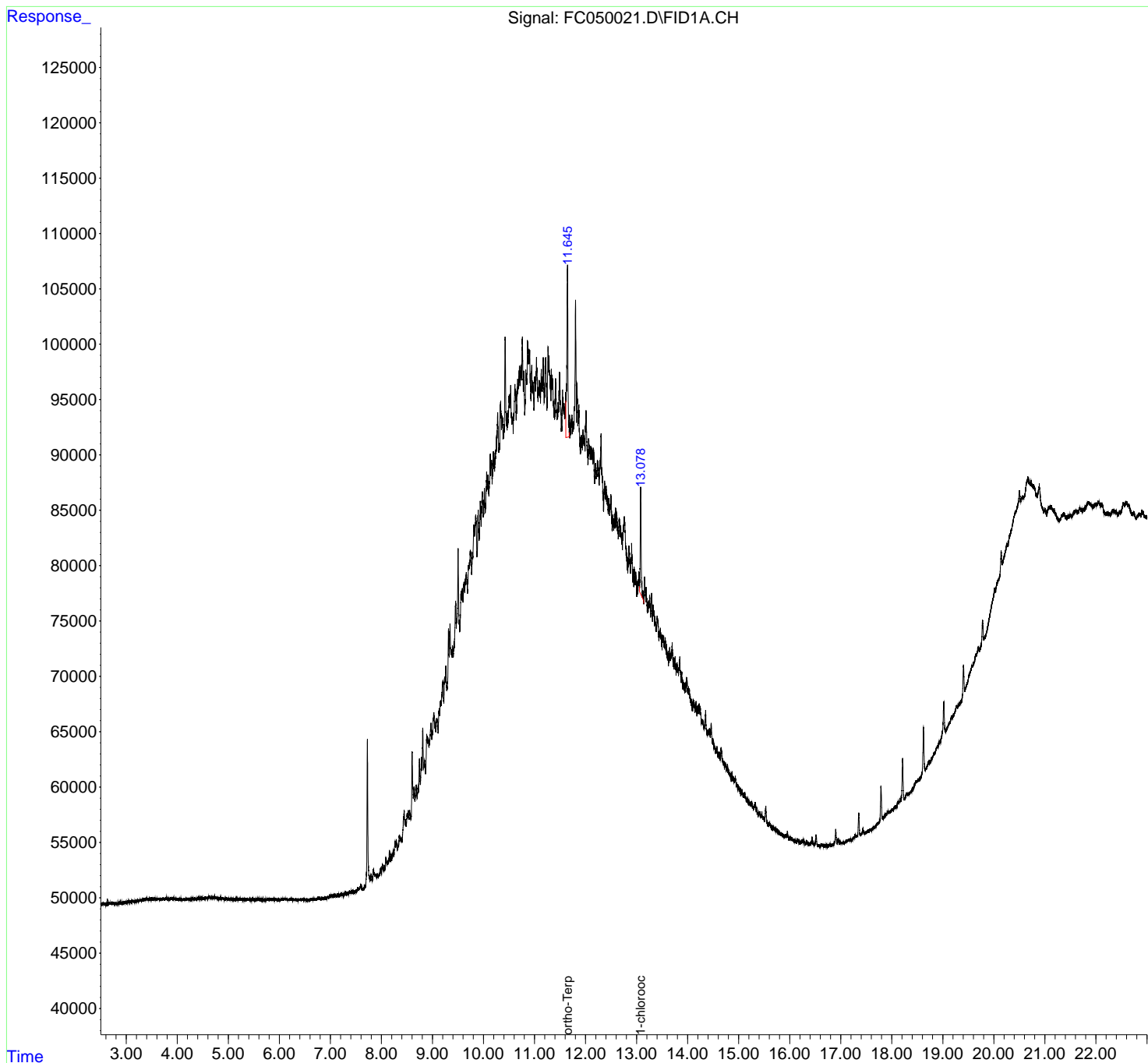
(f)=RT Delta > 1/2 Window

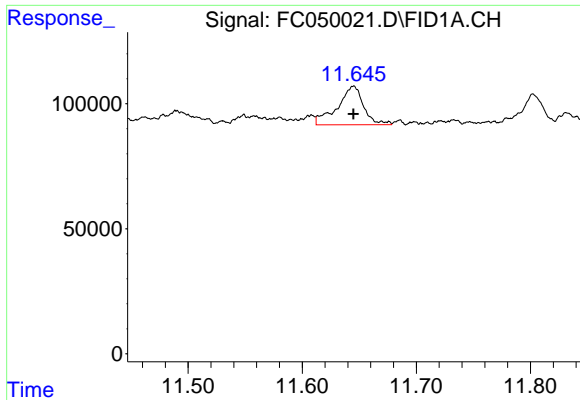
(m)=manual int.

Data Path : Z:\pestpcbsrv\HPCHEM1\FID\_C\Data\FC101220AL\  
 Data File : FC050021.D  
 Signal(s) : FID1A.CH  
 Acq On : 12 Oct 2020 13:06  
 Operator : DD\AJ  
 Sample : L4317-01DL 25X  
 Misc :  
 ALS Vial : 6 Sample Multiplier: 1

Integration File: sample.E  
 Quant Time: Oct 12 15:36:11 2020  
 Quant Method : Z:\pestpcbsrv\HPCHEM1\FID\_C\Method\Alaphatic EPH 100620.M  
 Quant Title : GC Extractables  
 QLast Update : Wed Oct 07 04:53:04 2020  
 Response via : Initial Calibration  
 Integrator: ChemStation 6890 Scale Mode: Large solvent peaks clipped

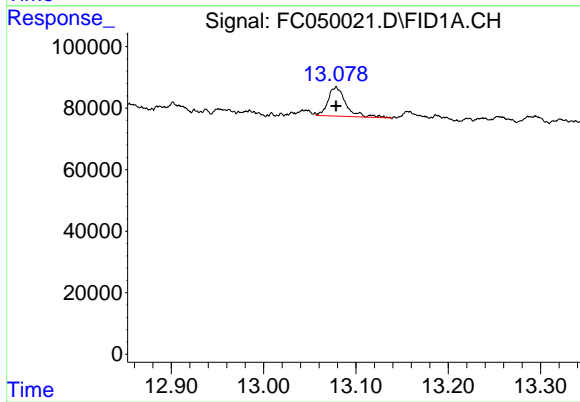
Volume Inj. : 1 ul  
 Signal Phase : Rxi-1ms  
 Signal Info : 20M x 0.18mm x 0.18um





#9 ortho-Terphenyl (SURR)

R.T.: 11.645 min  
Delta R.T.: 0.000 min  
Response: 245440  
Conc: 2.19 ug/ml m



#12 1-chlorooctadecane (SURR)

R.T.: 13.078 min  
Delta R.T.: 0.000 min  
Response: 125592  
Conc: 1.45 ug/ml