

Data Path : Z:\pestpcbsrv\HPCHEM1\FID_C\Data\FC101220AL\
 Data File : FC050042.D
 Signal(s) : FID1A.CH
 Acq On : 13 Oct 2020 2:05
 Operator : DD\AJ
 Sample : L4225-07DL 2X
 Misc :
 ALS Vial : 25 Sample Multiplier: 1

Integration File: sample.E
 Quant Time: Oct 13 03:23:29 2020
 Quant Method : Z:\pestpcbsrv\HPCHEM1\FID_C\Method\Alaphatic EPH 100620.M
 Quant Title : GC Extractables
 QLast Update : Wed Oct 07 04:53:04 2020
 Response via : Initial Calibration
 Integrator: ChemStation 6890 Scale Mode: Large solvent peaks clipped

Volume Inj. : 1 ul
 Signal Phase : Rxi-1ms
 Signal Info : 20M x 0.18mm x 0.18um

Compound	R.T.	Response	Conc Units

System Monitoring Compounds			
9) S ortho-Terphenyl (SURR)	11.645	2503574	22.335 ug/ml
Spiked Amount	50.000	Recovery	= 44.67%
12) S 1-chlorooctadecane (S...	13.078	1974230	22.791 ug/ml
Spiked Amount	50.000	Recovery	= 45.58%

Target Compounds

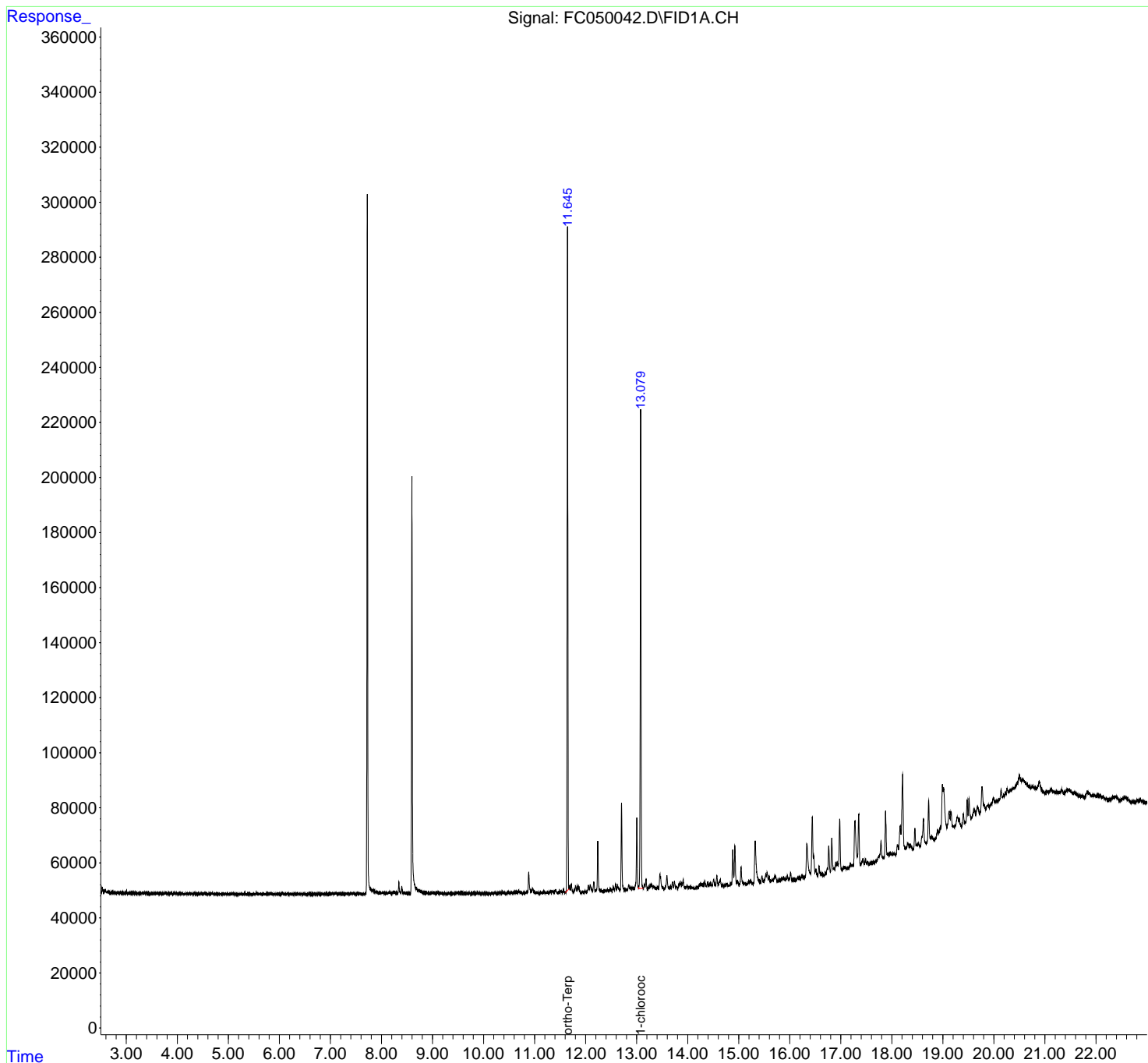
(f)=RT Delta > 1/2 Window

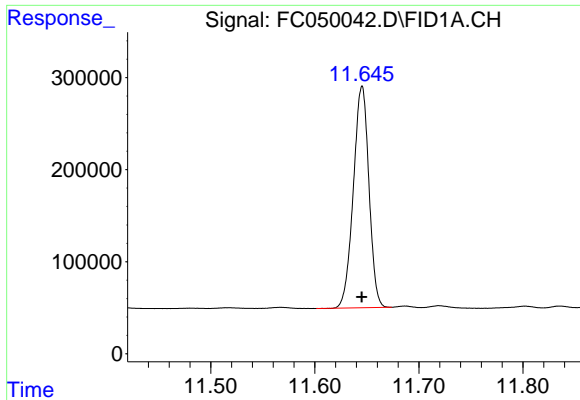
(m)=manual int.

Data Path : Z:\pestpcbsrv\HPCHEM1\FID_C\Data\FC101220AL\
Data File : FC050042.D
Signal(s) : FID1A.CH
Acq On : 13 Oct 2020 2:05
Operator : DD\AJ
Sample : L4225-07DL 2X
Misc :
ALS Vial : 25 Sample Multiplier: 1

Integration File: sample.E
Quant Time: Oct 13 03:23:29 2020
Quant Method : Z:\pestpcbsrv\HPCHEM1\FID_C\Method\Alaphatic EPH 100620.M
Quant Title : GC Extractables
QLast Update : Wed Oct 07 04:53:04 2020
Response via : Initial Calibration
Integrator: ChemStation 6890 Scale Mode: Large solvent peaks clipped

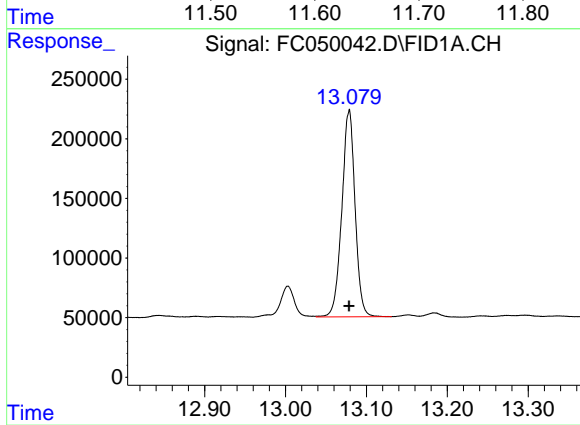
Volume Inj. : 1 ul
Signal Phase : Rxi-1ms
Signal Info : 20M x 0.18mm x 0.18um





#9 ortho-Terphenyl (SURR)

R.T.: 11.645 min
Delta R.T.: 0.000 min
Response: 2503574
Conc: 22.34 ug/ml



#12 1-chlorooctadecane (SURR)

R.T.: 13.078 min
Delta R.T.: 0.000 min
Response: 1974230
Conc: 22.79 ug/ml