

Data Path : Z:\pestpcbsrv\HPCHEM1\FID_C\Data\FC101221AL\
Data File : FC056122.D
Signal(s) : FID1A.CH
Acq On : 12 Oct 2021 9:20
Operator : AJ\MA
Sample : MECL2
Misc :
ALS Vial : 1 Sample Multiplier: 1

Instrument :
FID_C
ClientSampleId :

Integration File: autoint1.e
Quant Time: Oct 12 14:37:12 2021
Quant Method : Z:\pestpcbsrv\HPCHEM1\FID_C\Method\Aliphatic EPH 092921.M
Quant Title : GC Extractables
QLast Update : Thu Sep 30 01:25:44 2021
Response via : Initial Calibration
Integrator: ChemStation 6890 Scale Mode: Large solvent peaks clipped

Volume Inj. : 1 ul
Signal Phase : Rxi-1ms
Signal Info : 20M x 0.18mm x 0.18um

Compound	R.T.	Response	Conc Units
----------	------	----------	------------

System Monitoring Compounds

Target Compounds

(f)=RT Delta > 1/2 Window

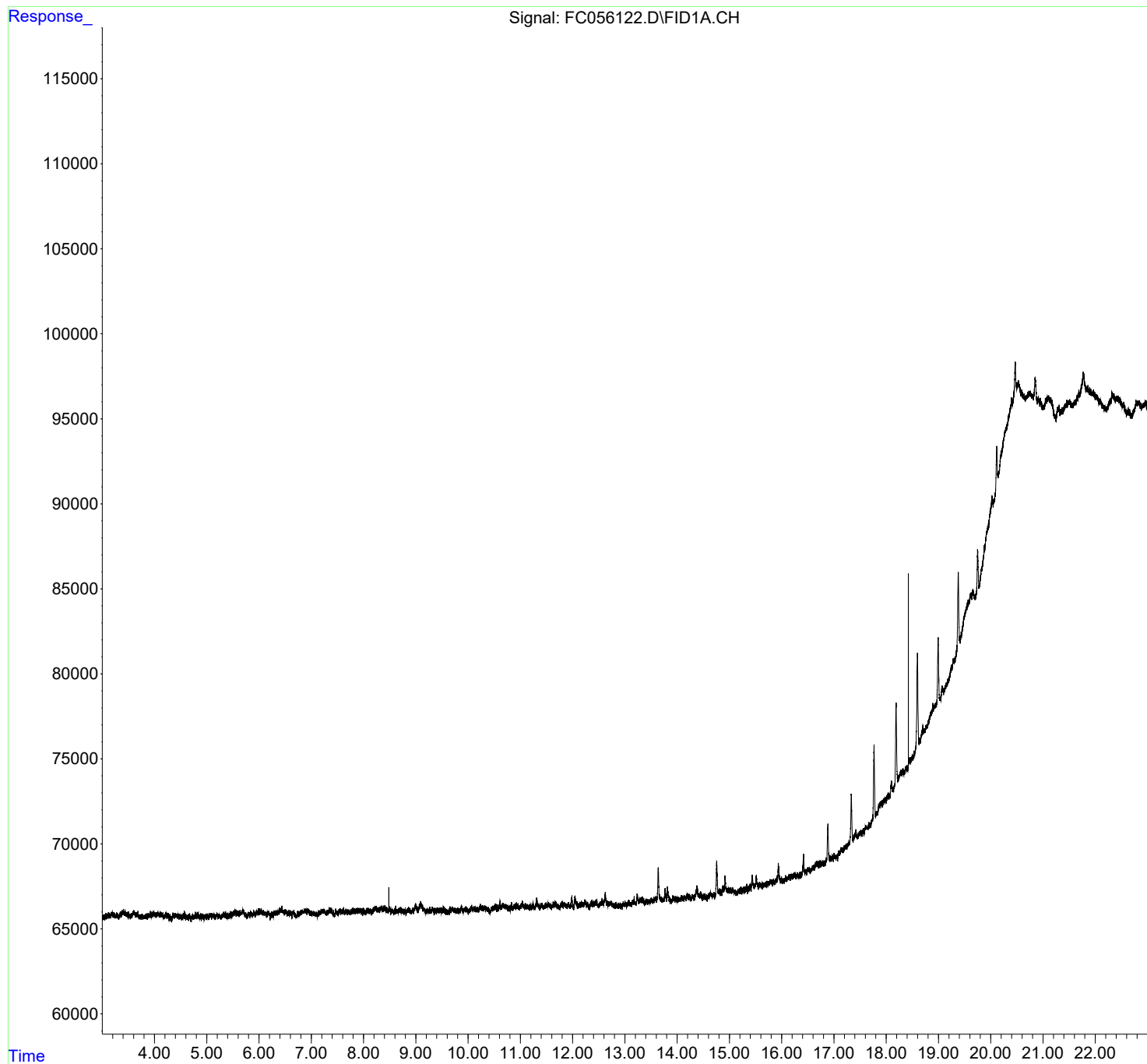
(m)=manual int.

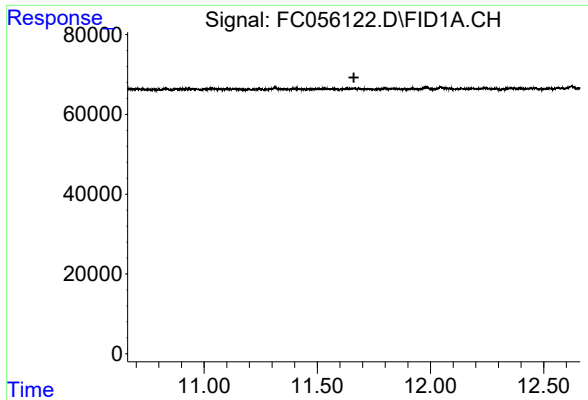
Data Path : Z:\pestpcbsrv\HPCHEM1\FID_C\Data\FC101221AL\
Data File : FC056122.D
Signal(s) : FID1A.CH
Acq On : 12 Oct 2021 9:20
Operator : AJ\MA
Sample : MECL2
Misc :
ALS Vial : 1 Sample Multiplier: 1

Instrument :
FID_C
ClientSampleId :

Integration File: autoint1.e
Quant Time: Oct 12 14:37:12 2021
Quant Method : Z:\pestpcbsrv\HPCHEM1\FID_C\Method\Aliphatic EPH 092921.M
Quant Title : GC Extractables
QLast Update : Thu Sep 30 01:25:44 2021
Response via : Initial Calibration
Integrator: ChemStation 6890 Scale Mode: Large solvent peaks clipped

Volume Inj. : 1 ul
Signal Phase : Rxi-1ms
Signal Info : 20M x 0.18mm x 0.18um

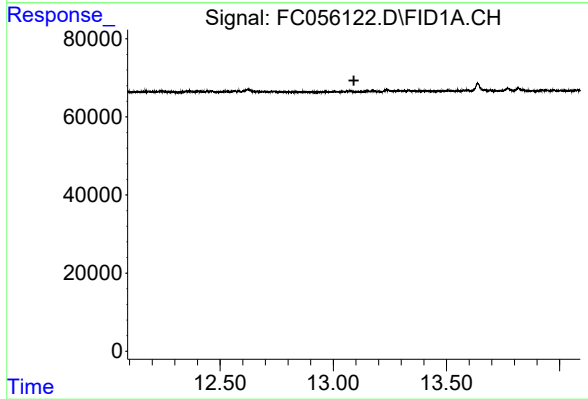




#9 ortho-Terphenyl (SURR)

R.T.: 0.000 min
Exp R.T. : 11.662 min
Response: 0
Conc: N.D.

Instrument :
FID_C
ClientSampleId :



#12 1-chlorooctadecane (SURR)

R.T.: 0.000 min
Exp R.T. : 13.091 min
Response: 0
Conc: N.D.