

Data Path : Z:\pestpcbsrv\HPCHEM1\FID_C\Data\FC101221AL\
 Data File : FC056133.D
 Signal(s) : FID1A.CH
 Acq On : 12 Oct 2021 17:14
 Operator : AJ\MA
 Sample : M4127-09DL 10X
 Misc :
 ALS Vial : 11 Sample Multiplier: 1

Instrument :
 FID_C
ClientSampleId :
 CHRT-26644DL

Manual Integrations
APPROVED
 mohammad
 10/13/2021 1:24:26 PM

Integration File: sample.E
 Quant Time: Oct 13 05:06:04 2021
 Quant Method : Z:\pestpcbsrv\HPCHEM1\FID_C\Method\Aliphatic EPH 092921.M
 Quant Title : GC Extractables
 QLast Update : Thu Sep 30 01:25:44 2021
 Response via : Initial Calibration
 Integrator: ChemStation 6890 Scale Mode: Large solvent peaks clipped

Volume Inj. : 1 ul
 Signal Phase : Rxi-1ms
 Signal Info : 20M x 0.18mm x 0.18um

Compound	R.T.	Response	Conc Units

System Monitoring Compounds			
9) S ortho-Terphenyl (SURR)	11.633	324450	2.734 ug/mlm
Spiked Amount	50.000	Recovery =	5.47%
12) S 1-chlorooctadecane (S...	13.065	277089	3.016 ug/mlm
Spiked Amount	50.000	Recovery =	6.03%

Target Compounds

(f)=RT Delta > 1/2 Window (m)=manual int.

Data Path : Z:\pestpcbsrv\HPCHEM1\FID_C\Data\FC101221AL\
Data File : FC056133.D
Signal(s) : FID1A.CH
Acq On : 12 Oct 2021 17:14
Operator : AJ\MA
Sample : M4127-09DL 10X
Misc :
ALS Vial : 11 Sample Multiplier: 1

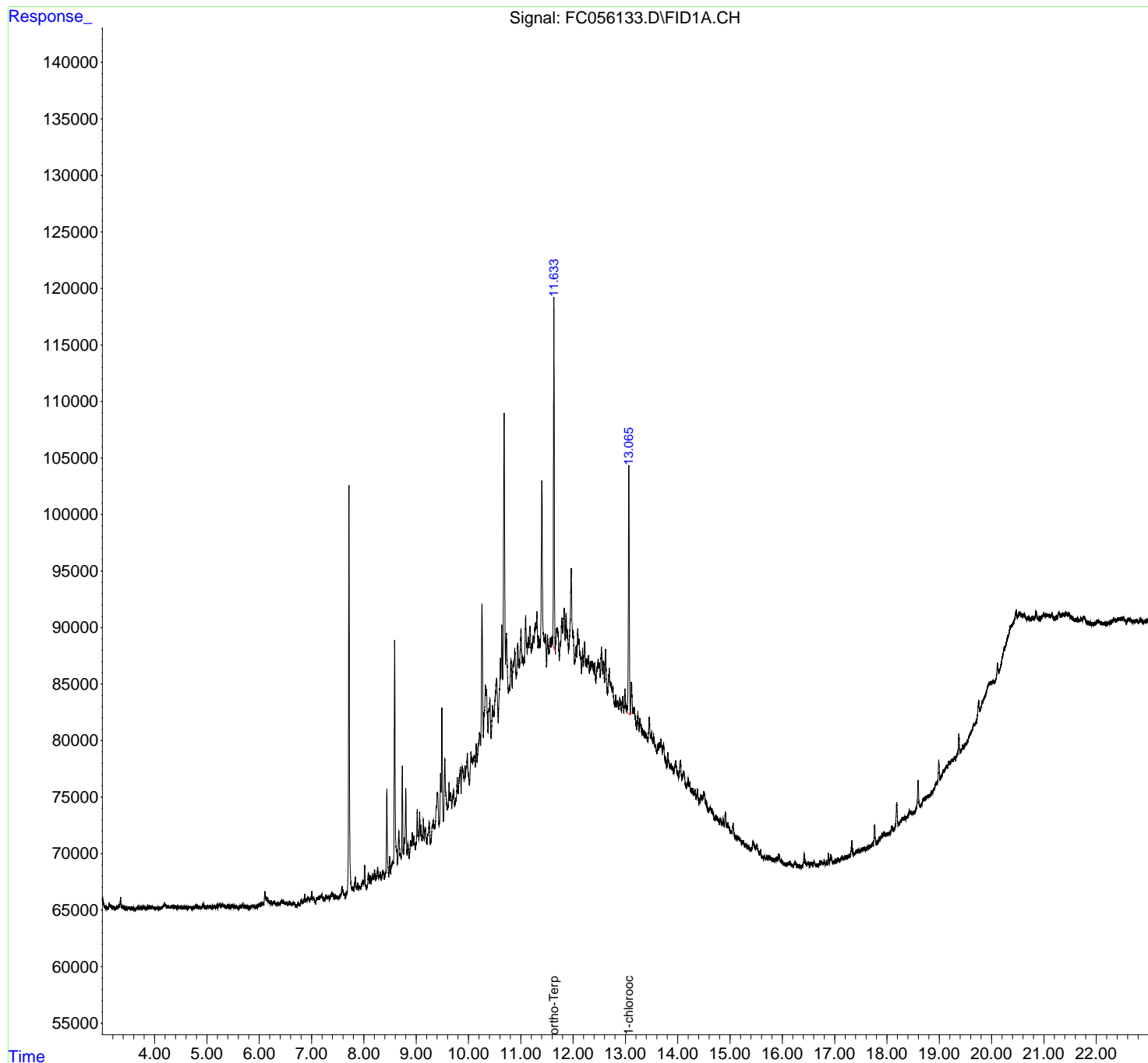
Instrument :
FID_C
ClientSampled :
CHRT-26644DL

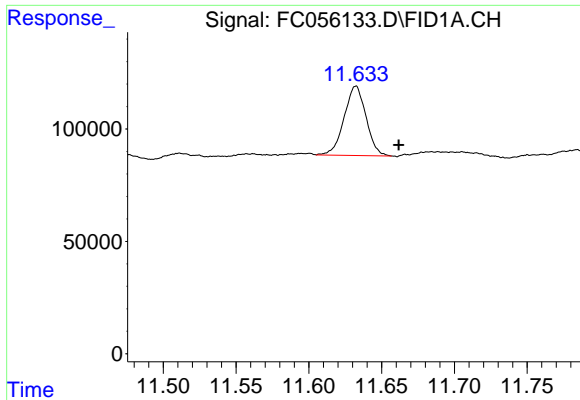
Manual Integrations
APPROVED

mohammad
10/13/2021 1:24:26 PM

Integration File: sample.E
Quant Time: Oct 13 05:06:04 2021
Quant Method : Z:\pestpcbsrv\HPCHEM1\FID_C\Method\Aliphatic EPH 092921.M
Quant Title : GC Extractables
QLast Update : Thu Sep 30 01:25:44 2021
Response via : Initial Calibration
Integrator: ChemStation 6890 Scale Mode: Large solvent peaks clipped

Volume Inj. : 1 ul
Signal Phase : Rxi-1ms
Signal Info : 20M x 0.18mm x 0.18um





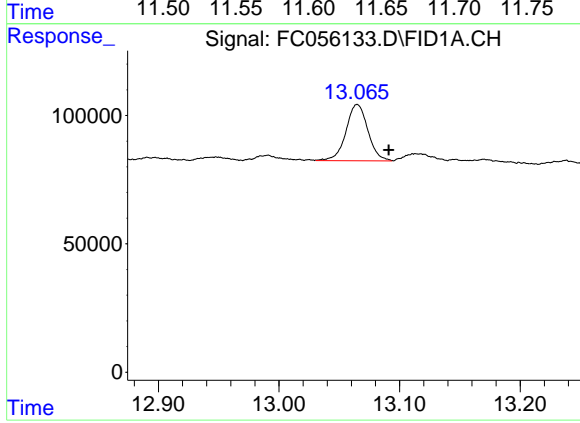
#9 ortho-Terphenyl (SURR)

R.T.: 11.633 min
Delta R.T.: -0.029 min
Response: 324450
Conc: 2.73 ug/ml m

Instrument :
FID_C
ClientSampleId :
CHRT-26644DL

Manual Integrations
APPROVED

mohammad
10/13/2021 1:24:26 PM



#12 1-chlorooctadecane (SURR)

R.T.: 13.065 min
Delta R.T.: -0.026 min
Response: 277089
Conc: 3.02 ug/ml m