

Data Path : Z:\pestpcbsrv\HPCHEM1\FID\_C\Data\FC101222AL\  
 Data File : FC061771.D  
 Signal(s) : FID1A.ch  
 Acq On : 13 Oct 2022 04:51  
 Operator : YP/AJ  
 Sample : PB148289BL  
 Misc :  
 ALS Vial : 8 Sample Multiplier: 1

Instrument :  
 FID\_C  
 ClientSampleId :  
 PB148289BL

Integration File: autoint1.e  
 Quant Time: Oct 13 07:39:01 2022  
 Quant Method : Z:\pestpcbsrv\HPCHEM1\FID\_C\Method\Aliphatic EPH 092022.M  
 Quant Title : GC Extractables  
 QLast Update : Tue Sep 20 18:33:32 2022  
 Response via : Initial Calibration  
 Integrator: ChemStation

Volume Inj. : 1 ul  
 Signal Phase : Rxi-1ms  
 Signal Info : 20M x 0.18mm x 0.18um

Compound	R.T.	Response	Conc Units
-----			
System Monitoring Compounds			
9) S ortho-Terphenyl (SURR)	11.592	8131747	47.583 ug/ml
Spiked Amount	50.000	Recovery	= 95.17%
12) S 1-chlorooctadecane (S...	13.028	6799689	49.774 ug/ml
Spiked Amount	50.000	Recovery	= 99.55%

Target Compounds

(f)=RT Delta > 1/2 Window

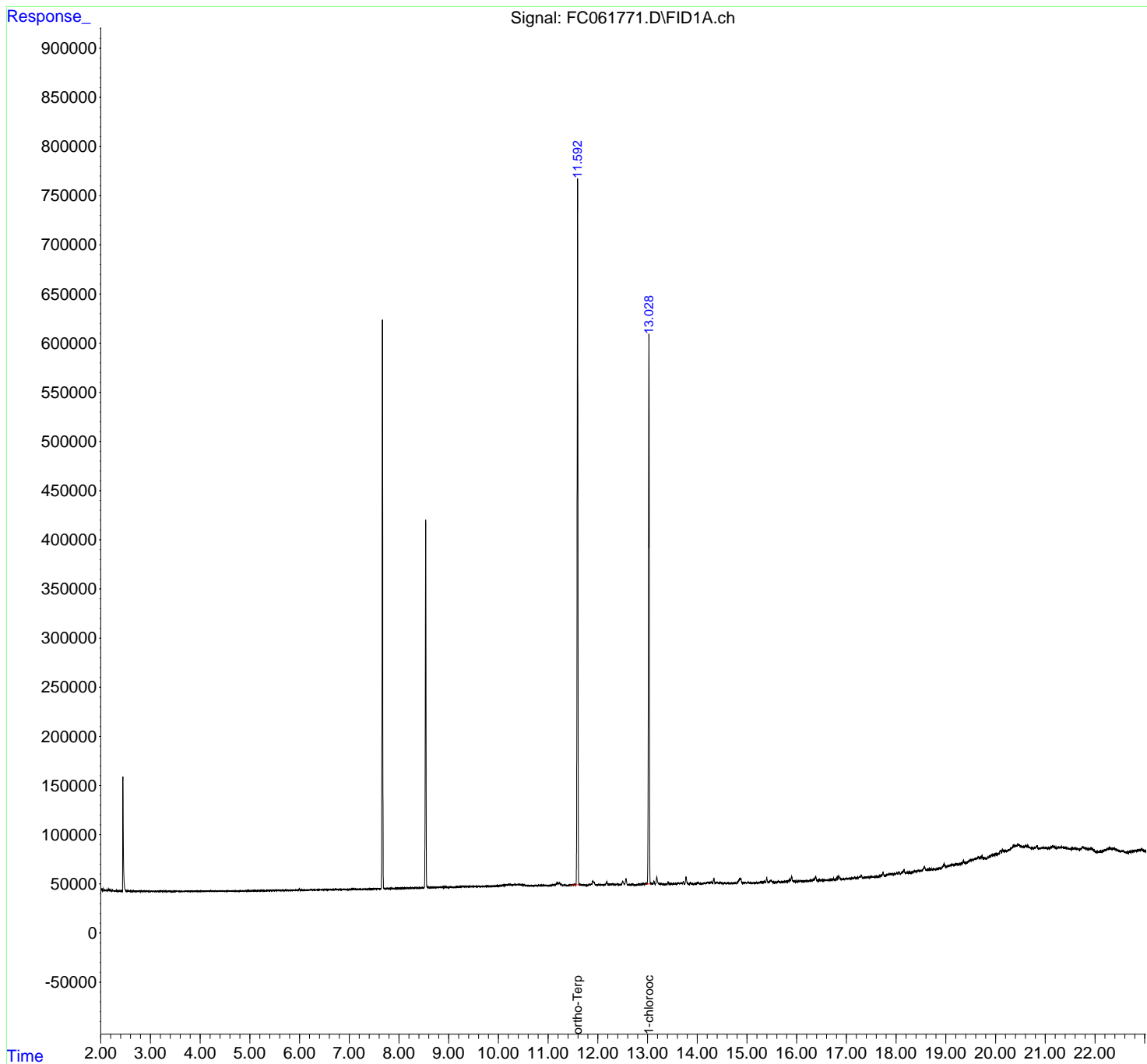
(m)=manual int.

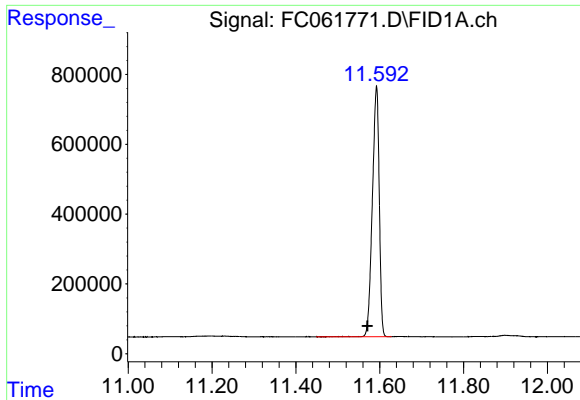
Data Path : Z:\pestpcbsrv\HPCHEM1\FID\_C\Data\FC101222AL\  
 Data File : FC061771.D  
 Signal(s) : FID1A.ch  
 Acq On : 13 Oct 2022 04:51  
 Operator : YP/AJ  
 Sample : PB148289BL  
 Misc :  
 ALS Vial : 8 Sample Multiplier: 1

Instrument :  
 FID\_C  
 ClientSampleId :  
 PB148289BL

Integration File: autoint1.e  
 Quant Time: Oct 13 07:39:01 2022  
 Quant Method : Z:\pestpcbsrv\HPCHEM1\FID\_C\Method\Aliphatic EPH 092022.M  
 Quant Title : GC Extractables  
 QLast Update : Tue Sep 20 18:33:32 2022  
 Response via : Initial Calibration  
 Integrator: ChemStation

Volume Inj. : 1 ul  
 Signal Phase : Rxi-1ms  
 Signal Info : 20M x 0.18mm x 0.18um

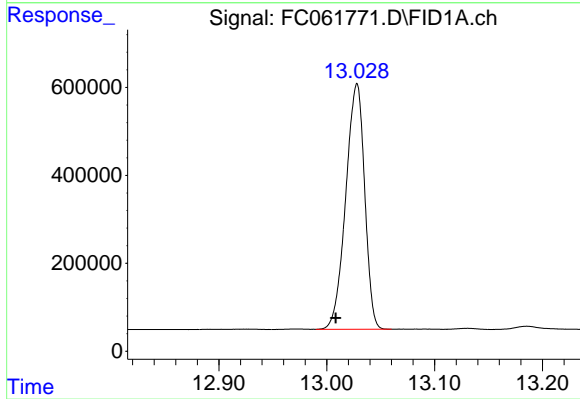




#9 ortho-Terphenyl (SURR)

R.T.: 11.592 min  
Delta R.T.: 0.022 min  
Response: 8131747  
Conc: 47.58 ug/ml

Instrument :  
FID\_C  
ClientSampleId :  
PB148289BL



#12 1-chlorooctadecane (SURR)

R.T.: 13.028 min  
Delta R.T.: 0.019 min  
Response: 6799689  
Conc: 49.77 ug/ml