

Data Path : Z:\pestpcbsrv\HPCHEM1\FID_C\Data\FC101320AL\
 Data File : FC050075.D
 Signal(s) : FID1A.CH
 Acq On : 14 Oct 2020 6:31
 Operator : DD\AJ
 Sample : L4374-08
 Misc :
 ALS Vial : 27 Sample Multiplier: 1

Integration File: autoint1.e
 Quant Time: Oct 14 07:21:29 2020
 Quant Method : Z:\pestpcbsrv\HPCHEM1\FID_C\Method\Alaphatic EPH 100620.M
 Quant Title : GC Extractables
 QLast Update : Wed Oct 07 04:53:04 2020
 Response via : Initial Calibration
 Integrator: ChemStation 6890 Scale Mode: Large solvent peaks clipped

Volume Inj. : 1 ul
 Signal Phase : Rxi-1ms
 Signal Info : 20M x 0.18mm x 0.18um

Compound	R.T.	Response	Conc Units

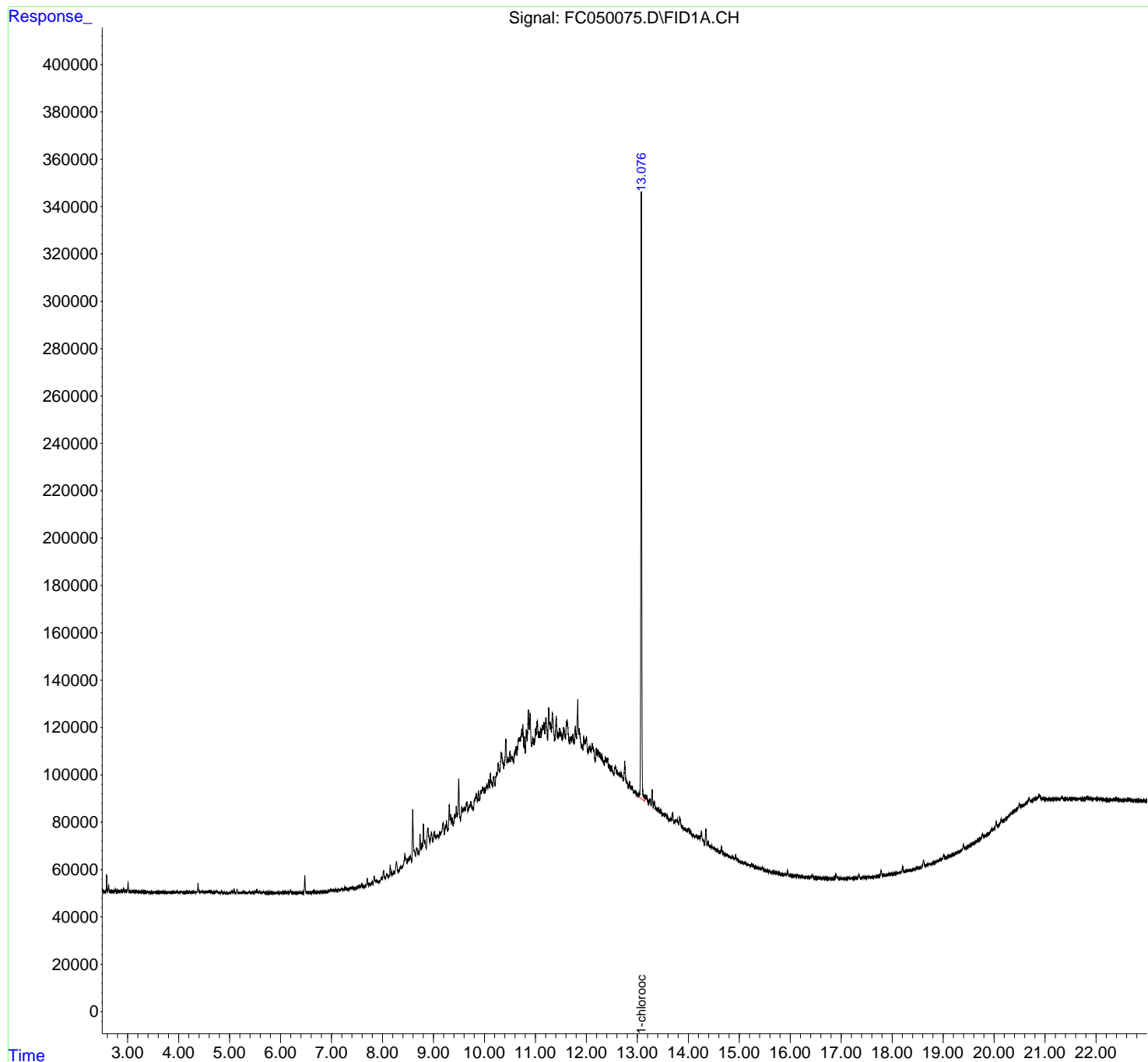
System Monitoring Compounds			
12) S 1-chlorooctadecane (S...	13.078	3110485	35.908 ug/ml
Spiked Amount	50.000	Recovery	= 71.82%
Target Compounds			

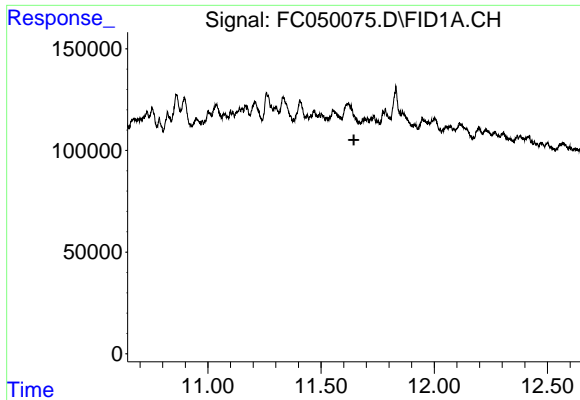
(f)=RT Delta > 1/2 Window (m)=manual int.

Data Path : Z:\pestpcbsrv\HPCHEM1\FID_C\Data\FC101320AL\
Data File : FC050075.D
Signal(s) : FID1A.CH
Acq On : 14 Oct 2020 6:31
Operator : DD\AJ
Sample : L4374-08
Misc :
ALS Vial : 27 Sample Multiplier: 1

Integration File: autoint1.e
Quant Time: Oct 14 07:21:29 2020
Quant Method : Z:\pestpcbsrv\HPCHEM1\FID_C\Method\Aliphatic EPH 100620.M
Quant Title : GC Extractables
QLast Update : Wed Oct 07 04:53:04 2020
Response via : Initial Calibration
Integrator: ChemStation 6890 Scale Mode: Large solvent peaks clipped

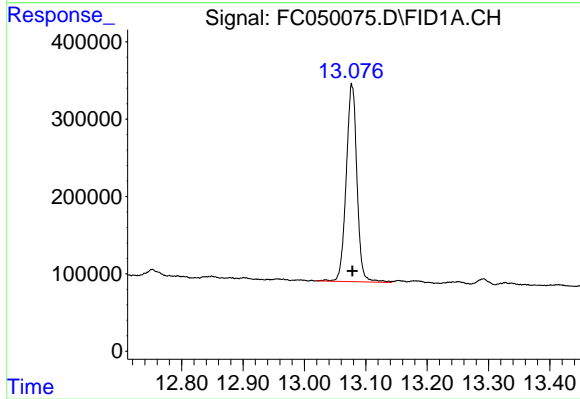
Volume Inj. : 1 ul
Signal Phase : Rxi-1ms
Signal Info : 20M x 0.18mm x 0.18um





#9 ortho-Terphenyl (SURR)

R.T.: 0.000 min
Exp R.T. : 11.645 min
Response: 0
Conc: N.D.



#12 1-chlorooctadecane (SURR)

R.T.: 13.078 min
Delta R.T.: 0.000 min
Response: 3110485
Conc: 35.91 ug/ml