

Data Path : Z:\pestpcbsrv\HPCHEM1\FID_C\Data\FC101424AL\
 Data File : FC067434.D
 Signal(s) : FID1A.ch
 Acq On : 14 Oct 2024 19:07
 Operator : YP/AJ
 Sample : P4397-01
 Misc :
 ALS Vial : 15 Sample Multiplier: 1

Instrument :
 FID_C
 ClientSampleId :
 WB-301-TOP

Integration File: autoint1.e
 Quant Time: Oct 15 04:32:12 2024
 Quant Method : Z:\pestpcbsrv\HPCHEM1\FID_C\Method\Aliphatic EPH 100224.M
 Quant Title : GC Extractables
 QLast Update : Tue Oct 01 09:13:32 2024
 Response via : Initial Calibration
 Integrator: ChemStation

Volume Inj. : 1 ul
 Signal Phase : Rxi-1ms
 Signal Info : 20M x 0.18mm x 0.18um

Compound	R.T.	Response	Conc Units
System Monitoring Compounds			
12) S 1-chlorooctadecane (S...	12.941	3402529	30.059 ug/ml
Spiked Amount	50.000	Recovery	= 60.12%

Target Compounds

(f)=RT Delta > 1/2 Window

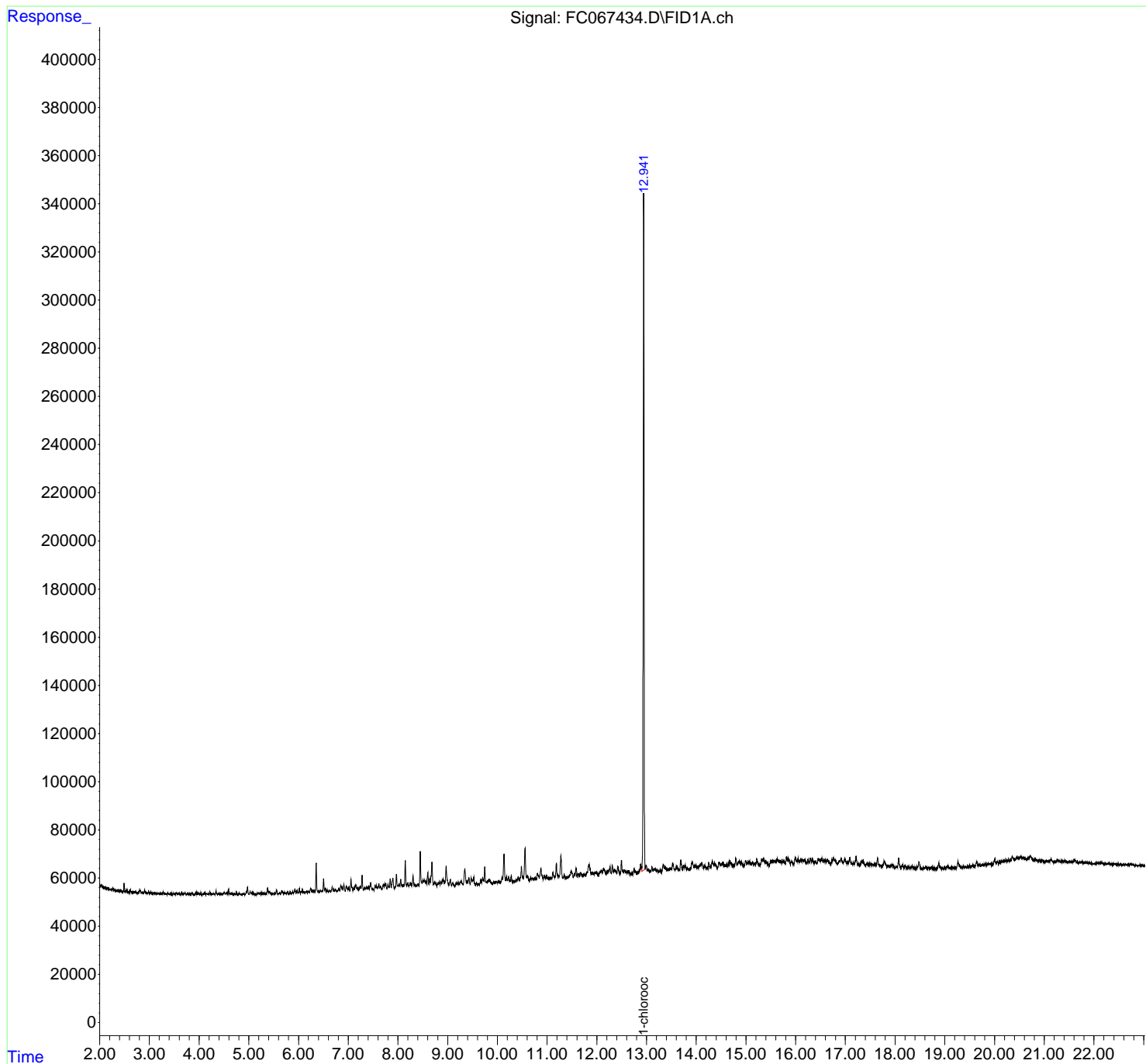
(m)=manual int.

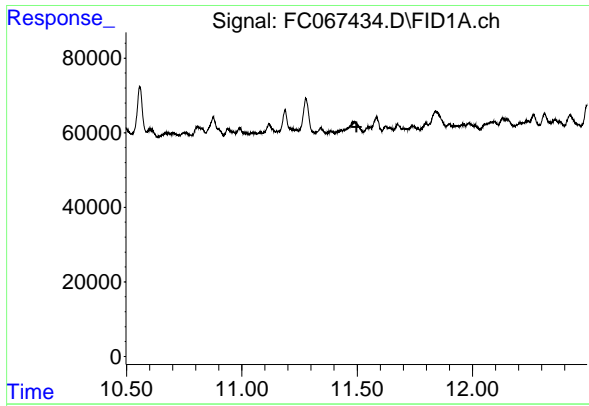
Data Path : Z:\pestpcbsrv\HPCHEM1\FID_C\Data\FC101424AL\
Data File : FC067434.D
Signal(s) : FID1A.ch
Acq On : 14 Oct 2024 19:07
Operator : YP/AJ
Sample : P4397-01
Misc :
ALS Vial : 15 Sample Multiplier: 1

Instrument :
FID_C
ClientSampleId :
WB-301-TOP

Integration File: autoint1.e
Quant Time: Oct 15 04:32:12 2024
Quant Method : Z:\pestpcbsrv\HPCHEM1\FID_C\Method\Aliphatic EPH 100224.M
Quant Title : GC Extractables
QLast Update : Tue Oct 01 09:13:32 2024
Response via : Initial Calibration
Integrator: ChemStation

Volume Inj. : 1 ul
Signal Phase : Rxi-1ms
Signal Info : 20M x 0.18mm x 0.18um

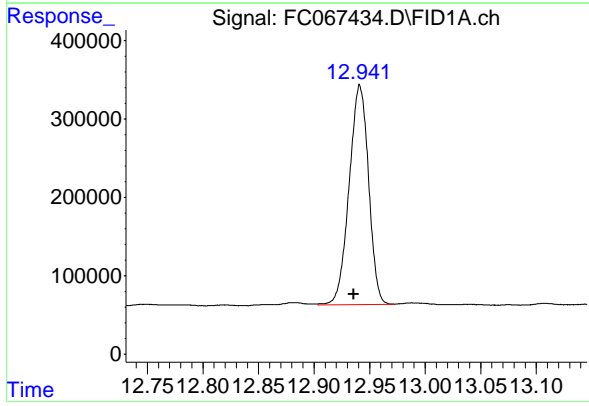




#9 ortho-Terphenyl (SURRE)

R.T.: 0.000 min
 Exp R.T.: 11.497 min
 Response: 0
 Conc: N.D.

Instrument : FID_C
 ClientSampleId : WB-301-TOP



#12 1-chlorooctadecane (SURRE)

R.T.: 12.941 min
 Delta R.T.: 0.005 min
 Response: 3402529
 Conc: 30.06 ug/ml