

Data Path : Z:\pestpcbsrv\HPCHEM1\FID\_C\Data\FC101520AL\  
 Data File : FC050136.D  
 Signal(s) : FID1A.CH  
 Acq On : 15 Oct 2020 20:35  
 Operator : DD\AJ  
 Sample : L4408-02  
 Misc :  
 ALS Vial : 15 Sample Multiplier: 1

Instrument :  
 FID\_C  
 ClientSampleId :

Integration File: autoint1.e  
 Quant Time: Oct 16 03:31:50 2020  
 Quant Method : Z:\pestpcbsrv\HPCHEM1\FID\_C\Method\Alaphatic EPH 100620.M  
 Quant Title : GC Extractables  
 QLast Update : Wed Oct 07 04:53:04 2020  
 Response via : Initial Calibration  
 Integrator: ChemStation 6890 Scale Mode: Large solvent peaks clipped

Volume Inj. : 1 ul  
 Signal Phase : Rxi-1ms  
 Signal Info : 20M x 0.18mm x 0.18um

Compound	R.T.	Response	Conc Units
-----			
System Monitoring Compounds			
9) S ortho-Terphenyl (SURR)	11.631	2025079	18.066 ug/ml
Spiked Amount	50.000	Recovery	= 36.13%
12) S 1-chlorooctadecane (S...	13.065	1277756	14.751 ug/ml
Spiked Amount	50.000	Recovery	= 29.50%
Target Compounds			
6) T n-Tetradecane (C14)	8.331f	191829	1.915 ug/ml
-----			

(f)=RT Delta > 1/2 Window

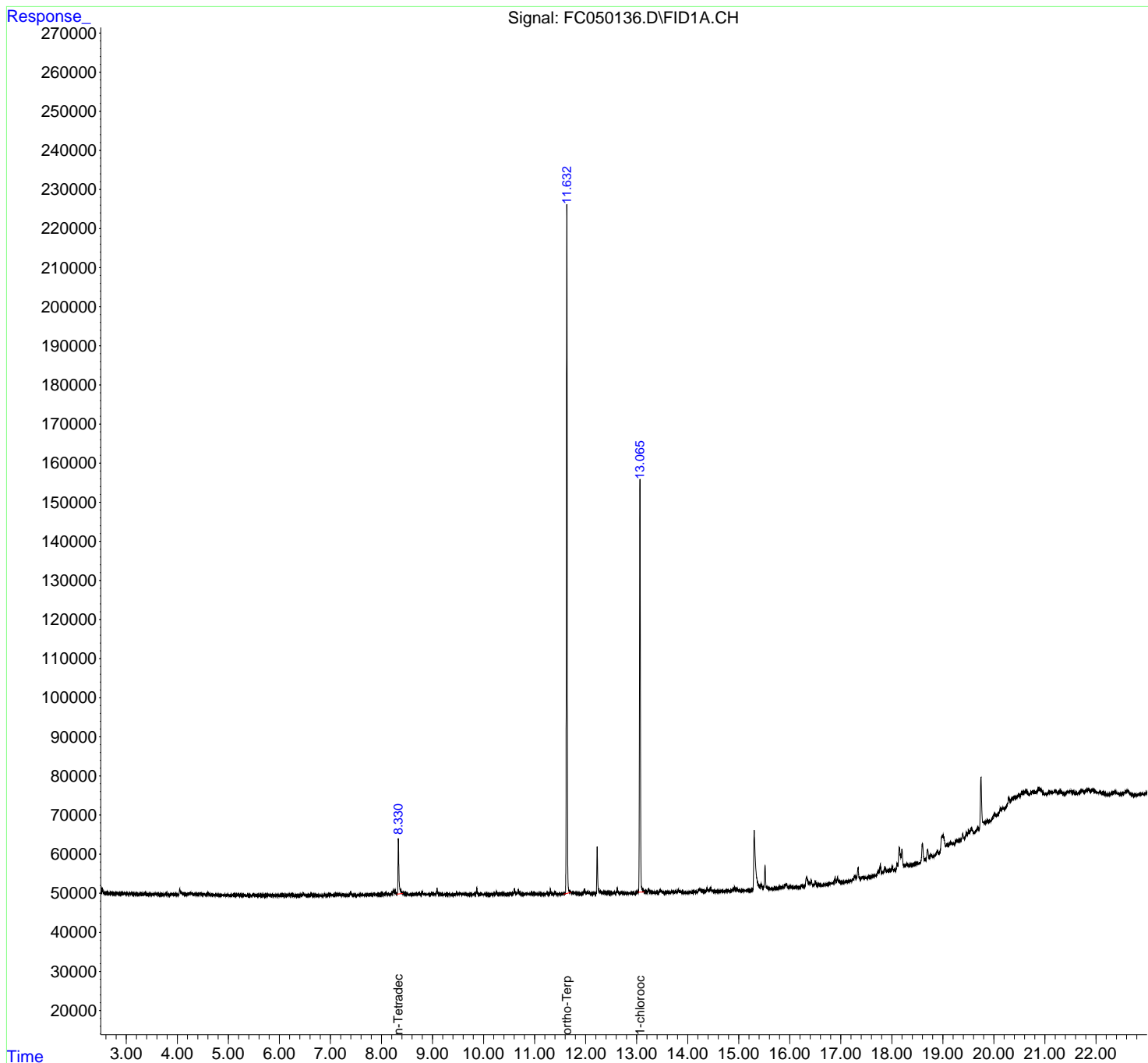
(m)=manual int.

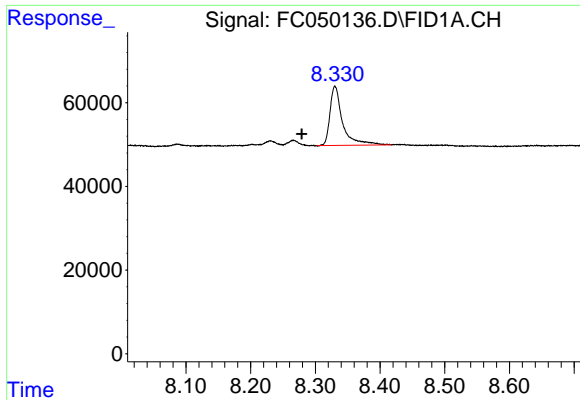
Data Path : Z:\pestpcbsrv\HPCHEM1\FID\_C\Data\FC101520AL\  
Data File : FC050136.D  
Signal(s) : FID1A.CH  
Acq On : 15 Oct 2020 20:35  
Operator : DD\AJ  
Sample : L4408-02  
Misc :  
ALS Vial : 15 Sample Multiplier: 1

Instrument :  
FID\_C  
ClientSampleId :

Integration File: autoint1.e  
Quant Time: Oct 16 03:31:50 2020  
Quant Method : Z:\pestpcbsrv\HPCHEM1\FID\_C\Method\Aliphatic EPH 100620.M  
Quant Title : GC Extractables  
QLast Update : Wed Oct 07 04:53:04 2020  
Response via : Initial Calibration  
Integrator: ChemStation 6890 Scale Mode: Large solvent peaks clipped

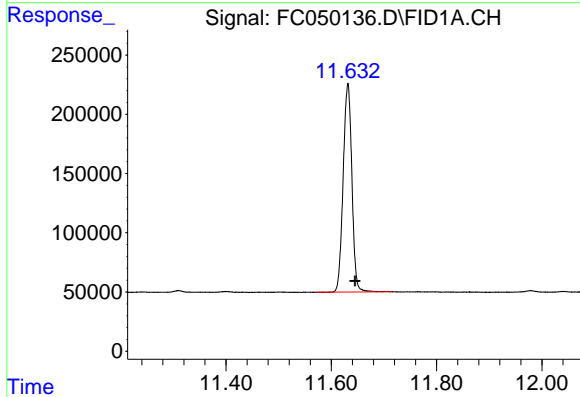
Volume Inj. : 1 ul  
Signal Phase : Rxi-1ms  
Signal Info : 20M x 0.18mm x 0.18um



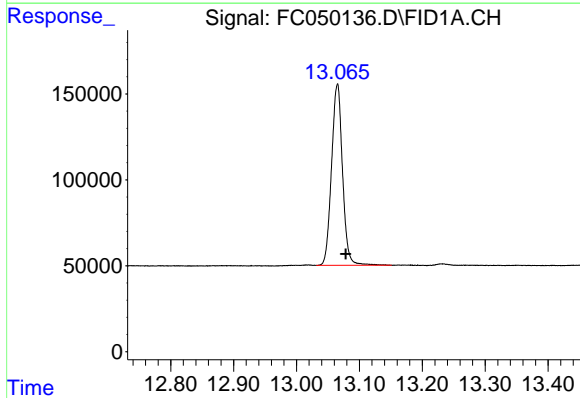


#6 n-Tetradecane (C14)  
 R.T.: 8.331 min  
 Delta R.T.: 0.052 min  
 Response: 191829  
 Conc: 1.91 ug/ml

Instrument :  
 FID\_C  
 ClientSampleId :



#9 ortho-Terphenyl (SURR)  
 R.T.: 11.631 min  
 Delta R.T.: -0.014 min  
 Response: 2025079  
 Conc: 18.07 ug/ml



#12 1-chlorooctadecane (SURR)  
 R.T.: 13.065 min  
 Delta R.T.: -0.014 min  
 Response: 1277756  
 Conc: 14.75 ug/ml