

Data Path : Z:\pestpcbsrv\HPCHEM1\FID\_C\Data\FC101620AL\  
 Data File : FC050166.D  
 Signal(s) : FID1A.CH  
 Acq On : 16 Oct 2020 16:01  
 Operator : DD\AJ  
 Sample : PB132416BL  
 Misc :  
 ALS Vial : 7 Sample Multiplier: 1

Instrument :  
 FID\_C  
 ClientSampleId :  
 PB132416BL

Integration File: autoint1.e  
 Quant Time: Oct 17 02:28:06 2020  
 Quant Method : Z:\pestpcbsrv\HPCHEM1\FID\_C\Method\Alaphatic EPH 100620.M  
 Quant Title : GC Extractables  
 QLast Update : Wed Oct 07 04:53:04 2020  
 Response via : Initial Calibration  
 Integrator: ChemStation 6890 Scale Mode: Large solvent peaks clipped

Volume Inj. : 1 ul  
 Signal Phase : Rxi-1ms  
 Signal Info : 20M x 0.18mm x 0.18um

Compound	R.T.	Response	Conc Units
-----			
System Monitoring Compounds			
9) S ortho-Terphenyl (SURR)	11.635	5041702	44.979 ug/ml
Spiked Amount	50.000	Recovery	= 89.96%
12) S 1-chlorooctadecane (S...	13.068	3931108	45.381 ug/ml
Spiked Amount	50.000	Recovery	= 90.76%

Target Compounds

-----

(f)=RT Delta > 1/2 Window

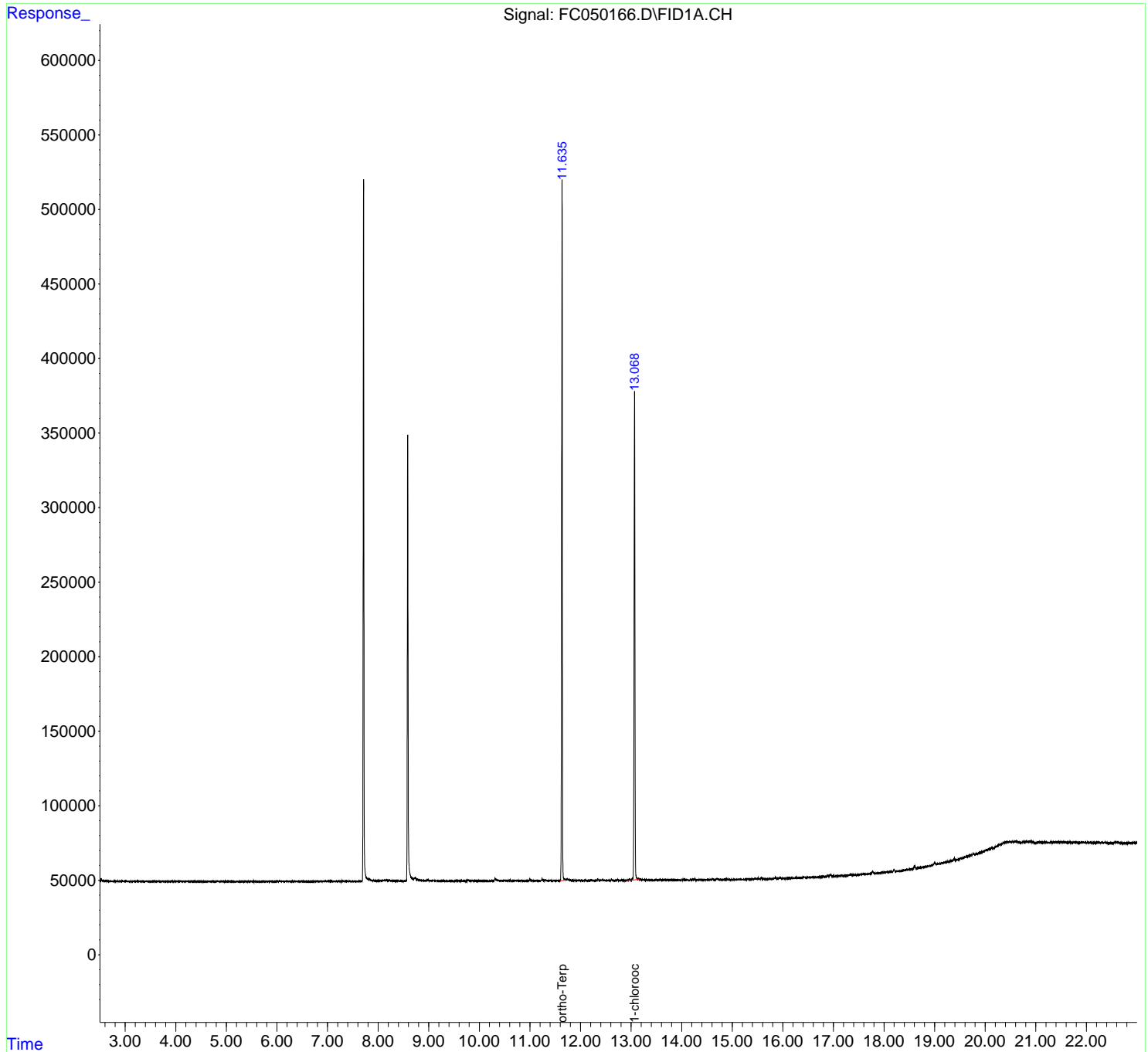
(m)=manual int.

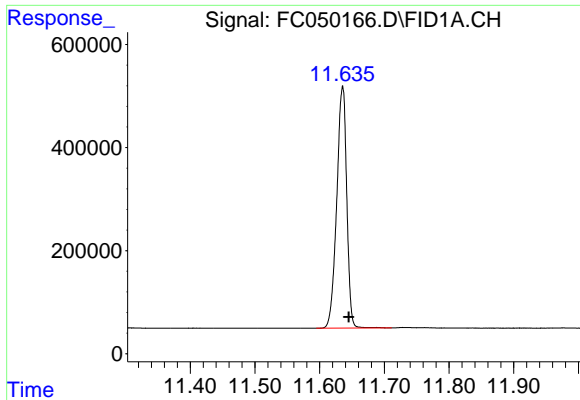
Data Path : Z:\pestpcbsrv\HPCHEM1\FID\_C\Data\FC101620AL\  
Data File : FC050166.D  
Signal(s) : FID1A.CH  
Acq On : 16 Oct 2020 16:01  
Operator : DD\AJ  
Sample : PB132416BL  
Misc :  
ALS Vial : 7 Sample Multiplier: 1

Instrument :  
FID\_C  
ClientSampled :  
PB132416BL

Integration File: autoint1.e  
Quant Time: Oct 17 02:28:06 2020  
Quant Method : Z:\pestpcbsrv\HPCHEM1\FID\_C\Method\Alaphatic EPH 100620.M  
Quant Title : GC Extractables  
QLast Update : Wed Oct 07 04:53:04 2020  
Response via : Initial Calibration  
Integrator: ChemStation 6890 Scale Mode: Large solvent peaks clipped

Volume Inj. : 1 ul  
Signal Phase : Rxi-1ms  
Signal Info : 20M x 0.18mm x 0.18um

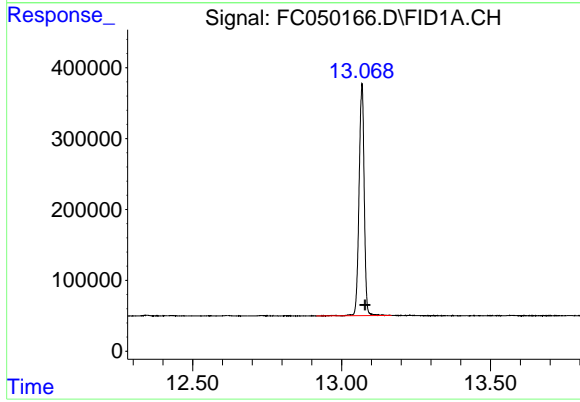




#9 ortho-Terphenyl (SURR)

R.T.: 11.635 min  
Delta R.T.: -0.010 min  
Response: 5041702  
Conc: 44.98 ug/ml

Instrument :  
FID\_C  
ClientSampleId :  
PB132416BL



#12 1-chlorooctadecane (SURR)

R.T.: 13.068 min  
Delta R.T.: -0.010 min  
Response: 3931108  
Conc: 45.38 ug/ml