

Data Path : Z:\pestpcbsrv\HPCHEM1\FID\_C\Data\FC101620AL\  
 Data File : FC050174.D  
 Signal(s) : FID1A.CH  
 Acq On : 16 Oct 2020 21:00  
 Operator : DD\AJ  
 Sample : L4223-03  
 Misc :  
 ALS Vial : 15 Sample Multiplier: 1

Instrument :  
 FID\_C  
 ClientSampleId :  
 PL-01-101420-1

Integration File: autoint1.e  
 Quant Time: Oct 17 02:30:03 2020  
 Quant Method : Z:\pestpcbsrv\HPCHEM1\FID\_C\Method\Alaphatic EPH 100620.M  
 Quant Title : GC Extractables  
 QLast Update : Wed Oct 07 04:53:04 2020  
 Response via : Initial Calibration  
 Integrator: ChemStation 6890 Scale Mode: Large solvent peaks clipped

Volume Inj. : 1 ul  
 Signal Phase : Rxi-1ms  
 Signal Info : 20M x 0.18mm x 0.18um

Compound	R.T.	Response	Conc Units
-----			
System Monitoring Compounds			
9) S ortho-Terphenyl (SURR)	11.636	3983511	35.538 ug/ml
Spiked Amount	50.000	Recovery	= 71.08%
12) S 1-chlorooctadecane (S...	13.059	9821902	113.385 ug/ml
Spiked Amount	50.000	Recovery	= 226.77%

Target Compounds

-----

(f)=RT Delta > 1/2 Window

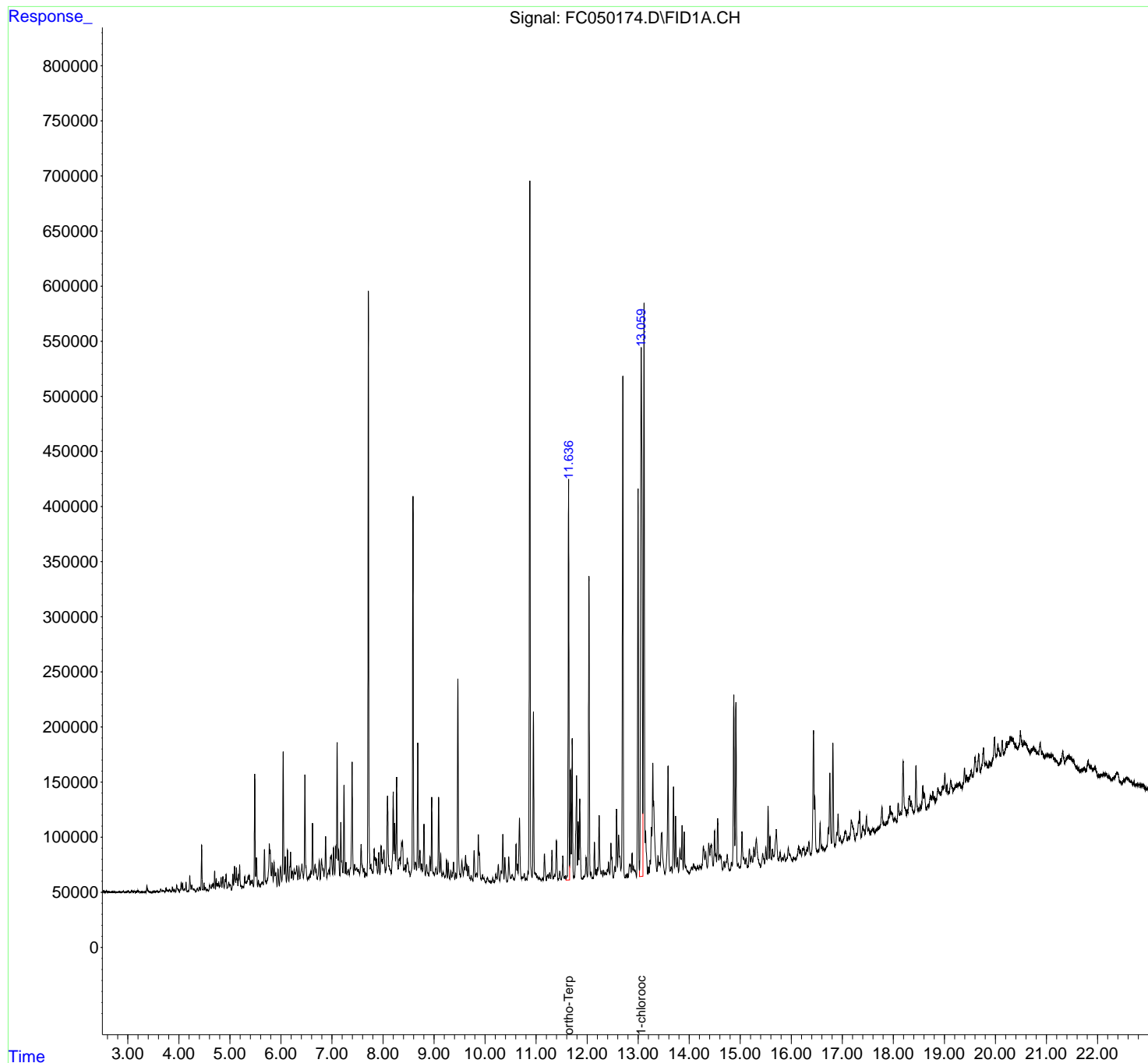
(m)=manual int.

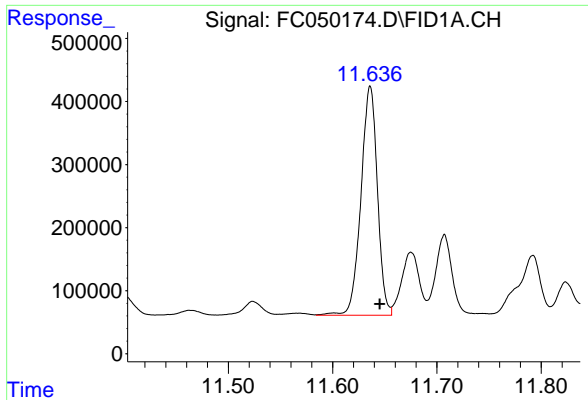
Data Path : Z:\pestpcbsrv\HPCHEM1\FID\_C\Data\FC101620AL\  
Data File : FC050174.D  
Signal(s) : FID1A.CH  
Acq On : 16 Oct 2020 21:00  
Operator : DD\AJ  
Sample : L4223-03  
Misc :  
ALS Vial : 15 Sample Multiplier: 1

Instrument :  
FID\_C  
ClientSampleId :  
PL-01-101420-1

Integration File: autoint1.e  
Quant Time: Oct 17 02:30:03 2020  
Quant Method : Z:\pestpcbsrv\HPCHEM1\FID\_C\Method\Alaphatic EPH 100620.M  
Quant Title : GC Extractables  
QLast Update : Wed Oct 07 04:53:04 2020  
Response via : Initial Calibration  
Integrator: ChemStation 6890 Scale Mode: Large solvent peaks clipped

Volume Inj. : 1 ul  
Signal Phase : Rxi-1ms  
Signal Info : 20M x 0.18mm x 0.18um

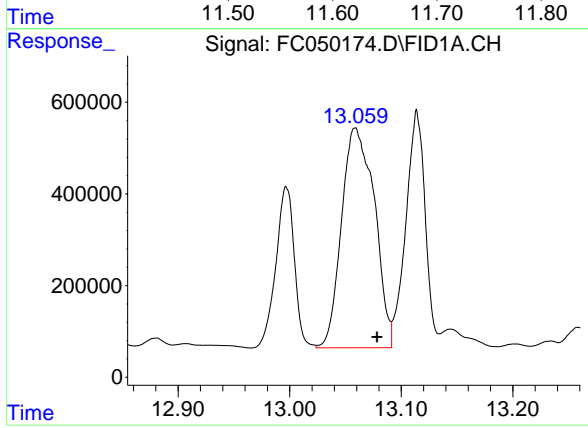




#9 ortho-Terphenyl (SURR)

R.T.: 11.636 min  
Delta R.T.: -0.009 min  
Response: 3983511  
Conc: 35.54 ug/ml

Instrument :  
FID\_C  
ClientSampleId :  
PL-01-101420-1



#12 1-chlorooctadecane (SURR)

R.T.: 13.059 min  
Delta R.T.: -0.019 min  
Response: 9821902  
Conc: 113.38 ug/ml