

Data Path : Z:\pestpcbsrv\HPCHEM1\FID_C\Data\FC101623AL\
 Data File : FC064845.D
 Signal(s) : FID1A.ch
 Acq On : 16 Oct 2023 21:42
 Operator : YP/AJ
 Sample : 20 PPM ALIPHATIC HC STD
 Misc :
 ALS Vial : 2 Sample Multiplier: 1

Instrument :
 FID_C
 ClientSampleId :
 20 PPM ALIPHATIC HC STD

Manual Integrations
 APPROVED

Reviewed By :Yogesh Patel 10/17/2023
 Supervised By :Ankita Jodhani 10/17/2023

Integration File: autoint1.e
 Quant Time: Oct 17 01:13:54 2023
 Quant Method : Z:\pestpcbsrv\HPCHEM1\FID_C\Method\Aliphatic EPH 101023.M
 Quant Title : GC Extractables
 QLast Update : Tue Oct 10 12:17:45 2023
 Response via : Initial Calibration
 Integrator: ChemStation

Volume Inj. : 1 ul
 Signal Phase : Rxi-1ms
 Signal Info : 20M x 0.18mm x 0.18um

Compound	R.T.	Response	Conc Units

System Monitoring Compounds			
9) S ortho-Terphenyl (SURR)	11.520	4792264	22.444 ug/ml
Spiked Amount	50.000	Recovery	= 44.89%
12) S 1-chlorooctadecane (S...	12.952	3441241	22.951 ug/ml
Spiked Amount	50.000	Recovery	= 45.90%
Target Compounds			
1) T n-Nonane (C9)	3.320	4165041	22.677 ug/ml
2) T n-Decane (C10)	4.379	4227527	23.110 ug/ml
3) T A~Naphthalene (C11.7)	5.958	4407076	23.236 ug/ml
4) T n-Dodecane (C12)	6.388	4262713	22.869 ug/ml
5) T A~2-methylnaphthalene...	7.012	4234134	24.178 ug/ml
6) T n-Tetradecane (C14)	8.176	4136965	23.035 ug/ml
7) T n-Hexadecane (C16)	9.770	4090688	22.997 ug/ml
8) T n-Octadecane (C18)	11.206	4047455	22.556 ug/ml
10) T n-Eicosane (C20)	12.510	3849433	22.356 ug/ml
11) T n-Heneicosane (C21)	13.120	3761929	22.213 ug/ml
13) T n-Docosane (C22)	13.703	3687314	22.379 ug/ml
14) T n-Tetracosane (C24)	14.801	3566251	22.406 ug/ml
15) T n-Hexacosane (C26)	15.818	3442395	22.472 ug/ml
16) T n-Octacosane (C28)	16.763	3359004	22.794 ug/ml
17) T n-Tricontane (C30)	17.649	3417139	23.355 ug/ml
18) T n-Dotriacontane (C32)	18.477	3401404	23.556 ug/ml
19) T n-Tetratriacontane (C34)	19.258	3268282	23.228 ug/ml
20) T n-Hexatriacontane (C36)	19.993	3202837	23.150 ug/ml
21) T n-Octatriacontane (C38)	20.716	3141661	23.717 ug/ml
22) T n-Tetracontane (C40)	21.598	3083789	24.641 ug/ml

(f)=RT Delta > 1/2 Window

(m)=manual int.

Data Path : Z:\pestpcbsrv\HPCHEM1\FID_C\Data\FC101623AL\
 Data File : FC064845.D
 Signal(s) : FID1A.ch
 Acq On : 16 Oct 2023 21:42
 Operator : YP/AJ
 Sample : 20 PPM ALIPHATIC HC STD
 Misc :
 ALS Vial : 2 Sample Multiplier: 1

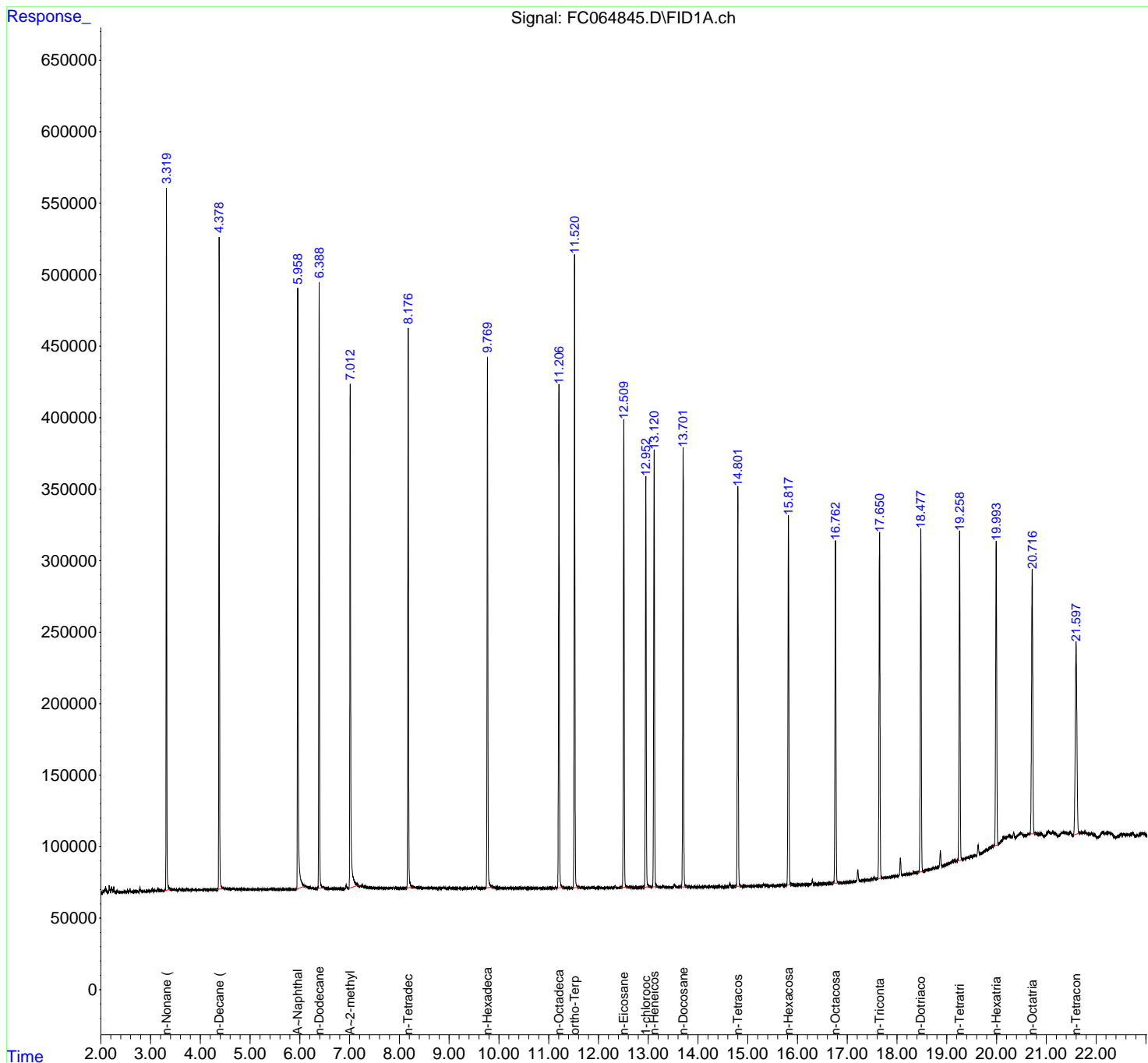
Instrument :
 FID_C
ClientSampleId :
 20 PPM ALIPHATIC HC STD

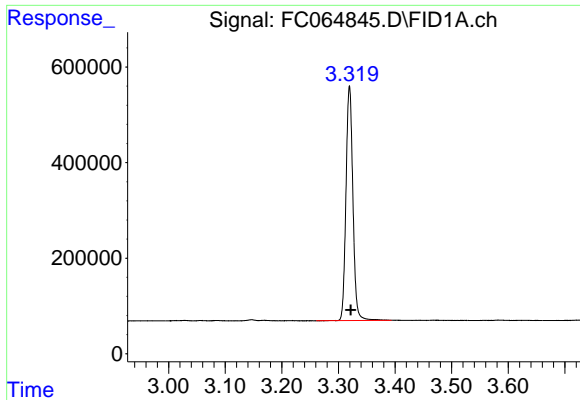
Manual Integrations
APPROVED

Reviewed By :Yogesh Patel 10/17/2023
 Supervised By :Ankita Jodhani 10/17/2023

Integration File: autoint1.e
 Quant Time: Oct 17 01:13:54 2023
 Quant Method : Z:\pestpcbsrv\HPCHEM1\FID_C\Method\Aliphatic EPH 101023.M
 Quant Title : GC Extractables
 QLast Update : Tue Oct 10 12:17:45 2023
 Response via : Initial Calibration
 Integrator: ChemStation

Volume Inj. : 1 ul
 Signal Phase : Rxi-1ms
 Signal Info : 20M x 0.18mm x 0.18um





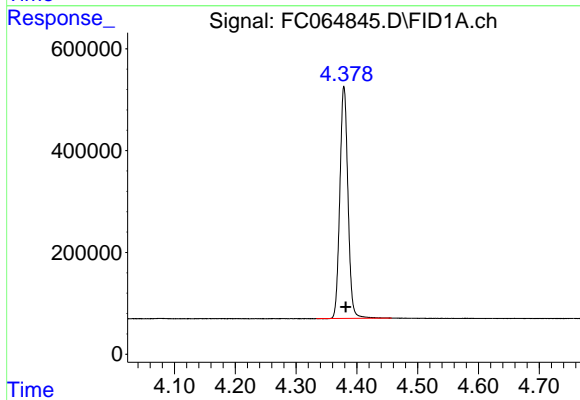
#1 n-Nonane (C9)

R.T.: 3.320 min
 Delta R.T.: -0.002 min
 Response: 4165041
 Conc: 22.68 ug/ml

Instrument : FID_C
 Client Sample Id : 20 PPM ALIPHATIC HC STD

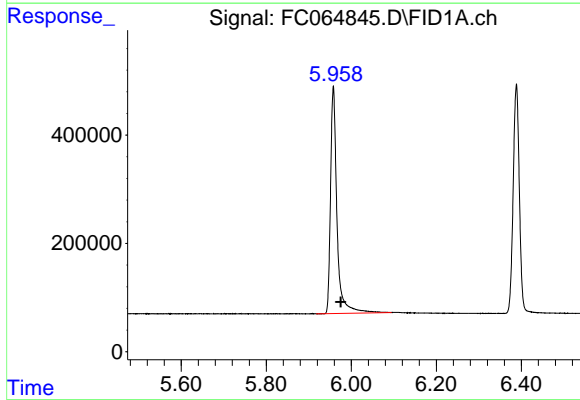
Manual Integrations
 APPROVED

Reviewed By :Yogesh Patel 10/17/2023
 Supervised By :Ankita Jodhani 10/17/2023



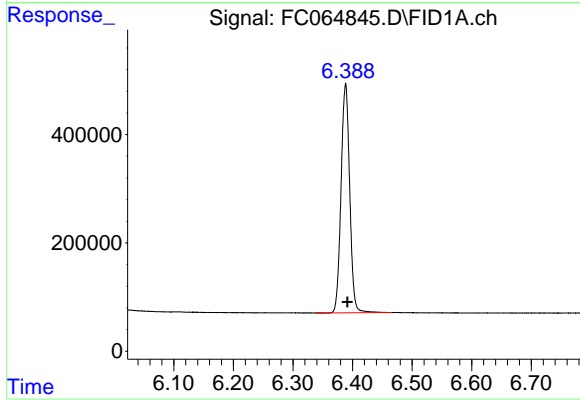
#2 n-Decane (C10)

R.T.: 4.379 min
 Delta R.T.: -0.003 min
 Response: 4227527
 Conc: 23.11 ug/ml



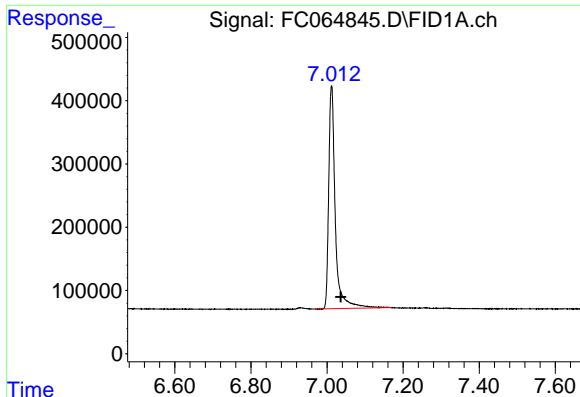
#3 A~Naphthalene (C11.7)

R.T.: 5.958 min
 Delta R.T.: -0.017 min
 Response: 4407076
 Conc: 23.24 ug/ml



#4 n-Dodecane (C12)

R.T.: 6.388 min
 Delta R.T.: -0.003 min
 Response: 4262713
 Conc: 22.87 ug/ml



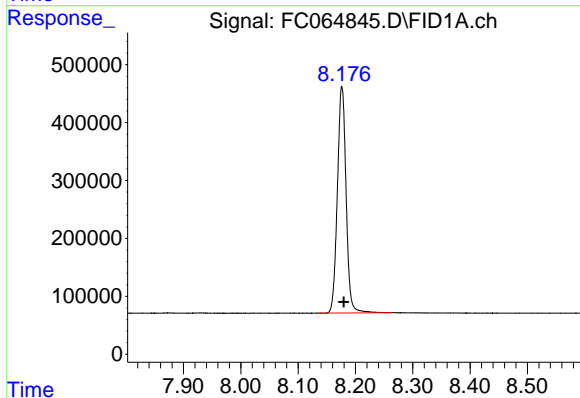
#5 A~2-methylnaphthalene (C12.89)

R.T.: 7.012 min
 Delta R.T.: -0.024 min
 Response: 4234134
 Conc: 24.18 ug/ml

Instrument : FID_C
 ClientSampleId : 20 PPM ALIPHATIC HC STD

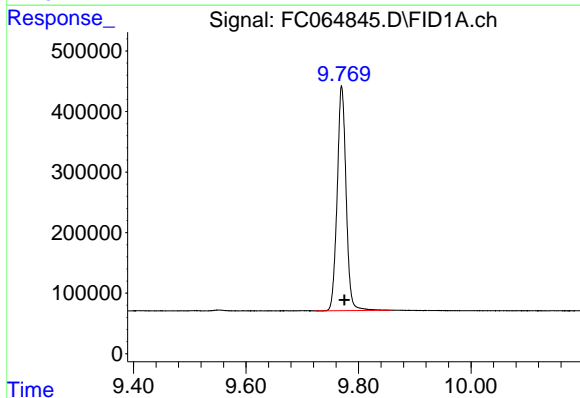
Manual Integrations
 APPROVED

Reviewed By :Yogesh Patel 10/17/2023
 Supervised By :Ankita Jodhani 10/17/2023



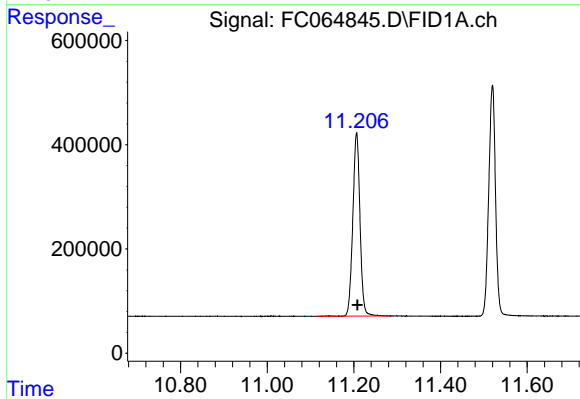
#6 n-Tetradecane (C14)

R.T.: 8.176 min
 Delta R.T.: -0.003 min
 Response: 4136965
 Conc: 23.03 ug/ml



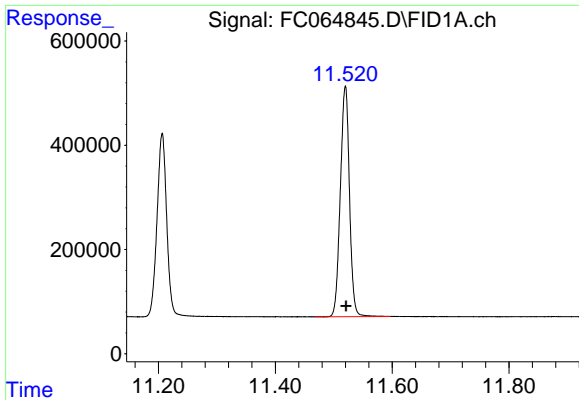
#7 n-Hexadecane (C16)

R.T.: 9.770 min
 Delta R.T.: -0.005 min
 Response: 4090688
 Conc: 23.00 ug/ml



#8 n-Octadecane (C18)

R.T.: 11.206 min
 Delta R.T.: -0.002 min
 Response: 4047455
 Conc: 22.56 ug/ml



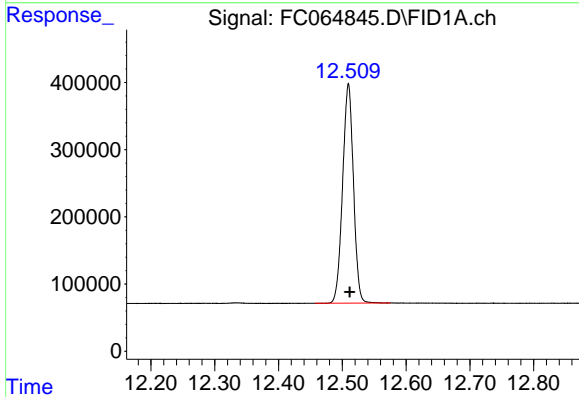
#9 ortho-Terphenyl (SURR)

R.T.: 11.520 min
 Delta R.T.: -0.001 min
 Response: 4792264
 Conc: 22.44 ug/ml

Instrument : FID_C
 Client Sample Id : 20 PPM ALIPHATIC HC STD

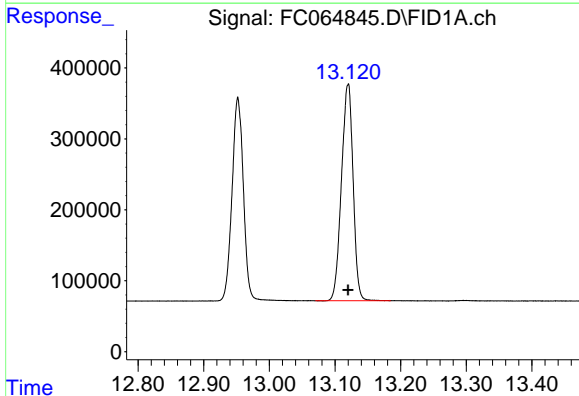
Manual Integrations
 APPROVED

Reviewed By :Yogesh Patel 10/17/2023
 Supervised By :Ankita Jodhani 10/17/2023



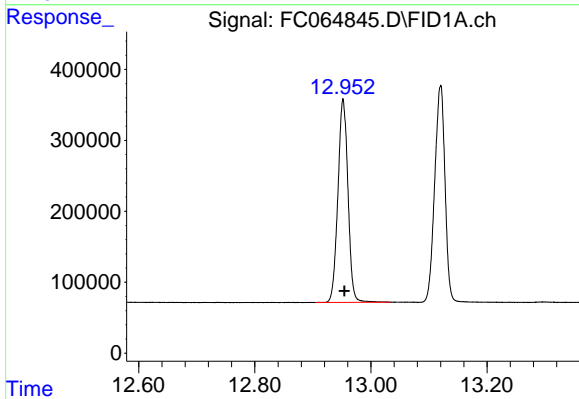
#10 n-Eicosane (C20)

R.T.: 12.510 min
 Delta R.T.: -0.002 min
 Response: 3849433
 Conc: 22.36 ug/ml



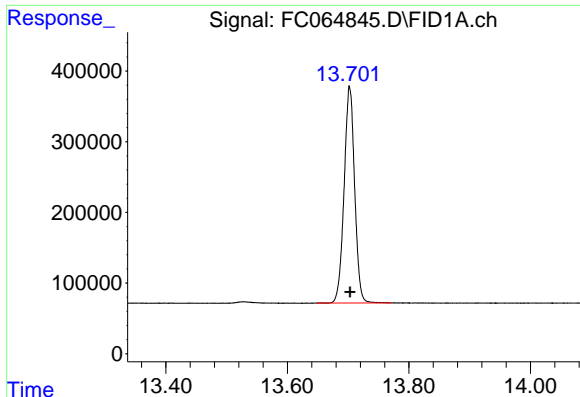
#11 n-Heneicosane (C21)

R.T.: 13.120 min
 Delta R.T.: 0.000 min
 Response: 3761929
 Conc: 22.21 ug/ml



#12 1-chlorooctadecane (SURR)

R.T.: 12.952 min
 Delta R.T.: -0.003 min
 Response: 3441241
 Conc: 22.95 ug/ml



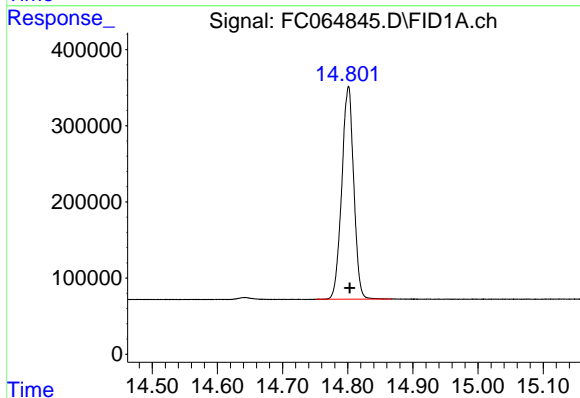
#13 n-Docosane (C22)

R.T.: 13.703 min
 Delta R.T.: 0.000 min
 Response: 3687314
 Conc: 22.38 ug/ml

Instrument :
 FID_C
 ClientSampleId :
 20 PPM ALIPHATIC HC STD

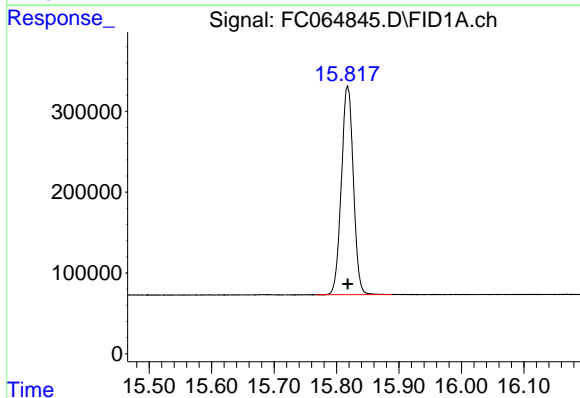
Manual Integrations
 APPROVED

Reviewed By :Yogesh Patel 10/17/2023
 Supervised By :Ankita Jodhani 10/17/2023



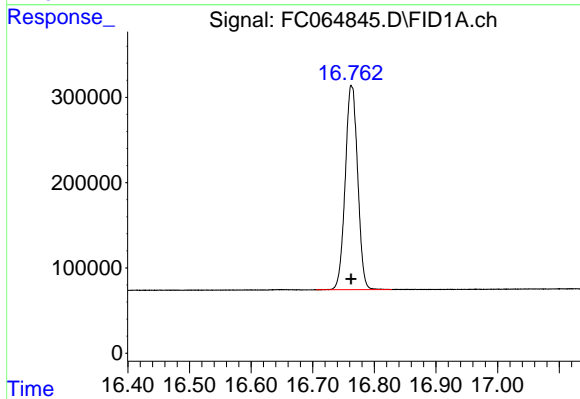
#14 n-Tetracosane (C24)

R.T.: 14.801 min
 Delta R.T.: -0.002 min
 Response: 3566251
 Conc: 22.41 ug/ml



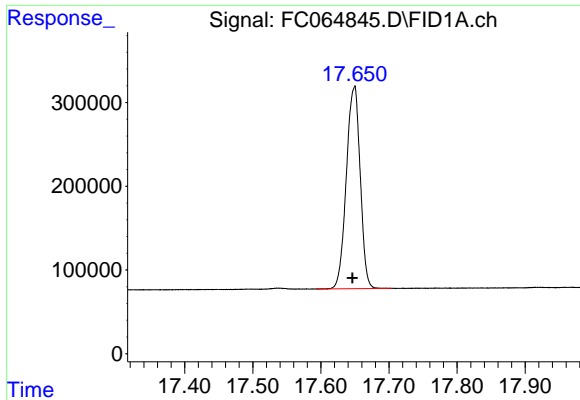
#15 n-Hexacosane (C26)

R.T.: 15.818 min
 Delta R.T.: 0.000 min
 Response: 3442395
 Conc: 22.47 ug/ml



#16 n-Octacosane (C28)

R.T.: 16.763 min
 Delta R.T.: 0.001 min
 Response: 3359004
 Conc: 22.79 ug/ml



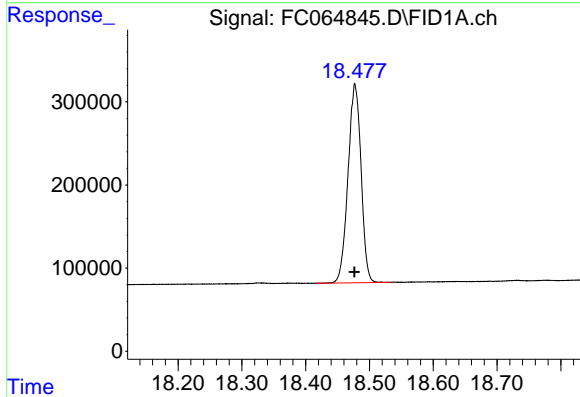
#17 n-Tricontane (C30)

R.T.: 17.649 min
 Delta R.T.: 0.003 min
 Response: 3417139
 Conc: 23.36 ug/ml

Instrument :
 FID_C
 ClientSampleId :
 20 PPM ALIPHATIC HC STD

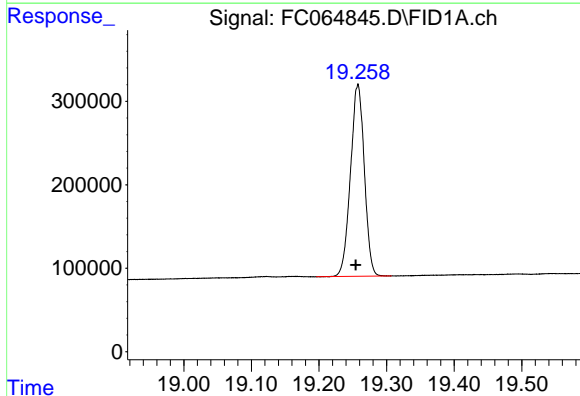
Manual Integrations
 APPROVED

Reviewed By :Yogesh Patel 10/17/2023
 Supervised By :Ankita Jodhani 10/17/2023



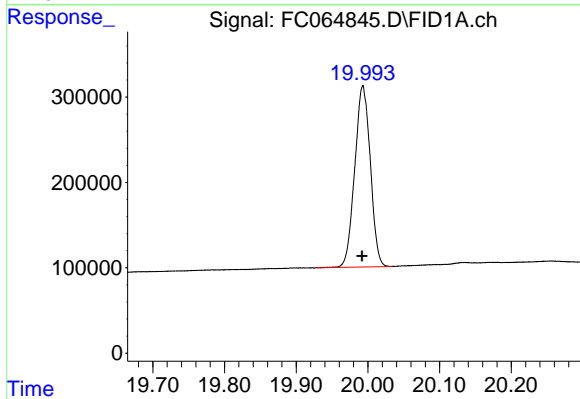
#18 n-Dotriacontane (C32)

R.T.: 18.477 min
 Delta R.T.: 0.000 min
 Response: 3401404
 Conc: 23.56 ug/ml



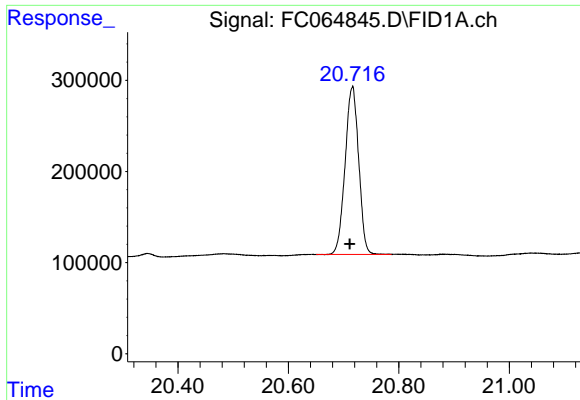
#19 n-Tetratriacontane (C34)

R.T.: 19.258 min
 Delta R.T.: 0.003 min
 Response: 3268282
 Conc: 23.23 ug/ml



#20 n-Hexatriacontane (C36)

R.T.: 19.993 min
 Delta R.T.: 0.000 min
 Response: 3202837
 Conc: 23.15 ug/ml m



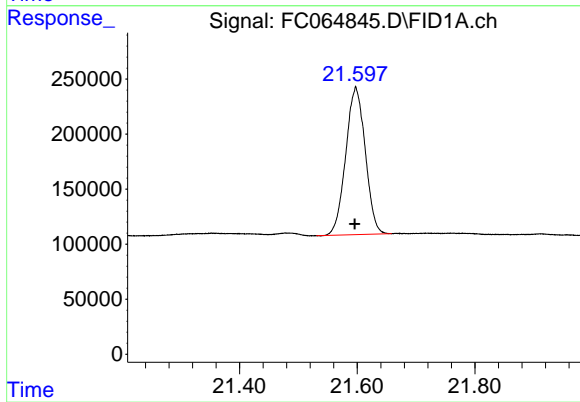
#21 n-Octatriacontane (C38)

R.T.: 20.716 min
 Delta R.T.: 0.005 min
 Response: 3141661
 Conc: 23.72 ug/ml

Instrument :
 FID_C
 ClientSampleId :
 20 PPM ALIPHATIC HC STD

Manual Integrations
 APPROVED

Reviewed By :Yogesh Patel 10/17/2023
 Supervised By :Ankita Jodhani 10/17/2023



#22 n-Tetracontane (C40)

R.T.: 21.598 min
 Delta R.T.: 0.002 min
 Response: 3083789
 Conc: 24.64 ug/ml