

Data Path : Z:\pestpcbsrv\HPCHEM1\FID_C\Data\FC101819AL\
 Data File : FC044095.D
 Signal(s) : FID1A.CH
 Acq On : 18 Oct 2019 11:23
 Operator : DD\AJ
 Sample : K5393-01DL 2X
 Misc :
 ALS Vial : 5 Sample Multiplier: 1

Integration File: sample.E
 Quant Time: Oct 21 10:22:01 2019
 Quant Method : Z:\pestpcbsrv\HPCHEM1\FID_C\Method\Alaphatic EPH 092519.M
 Quant Title : GC Extractables
 QLast Update : Sat Oct 12 00:05:39 2019
 Response via : Initial Calibration
 Integrator: ChemStation 6890 Scale Mode: Large solvent peaks clipped

Volume Inj. : 1 ul
 Signal Phase : Rxi-1ms
 Signal Info : 20M x 0.18mm x 0.18um

Compound	R.T.	Response	Conc Units
System Monitoring Compounds			
9) S ortho-Terphenyl (SURR)	11.559	2453709	16.166 ug/ml
Spiked Amount	50.000	Recovery =	32.33%
12) S 1-chlorooctadecane (S...	12.977	2239077	18.885 ug/ml
Spiked Amount	50.000	Recovery =	37.77%

Target Compounds

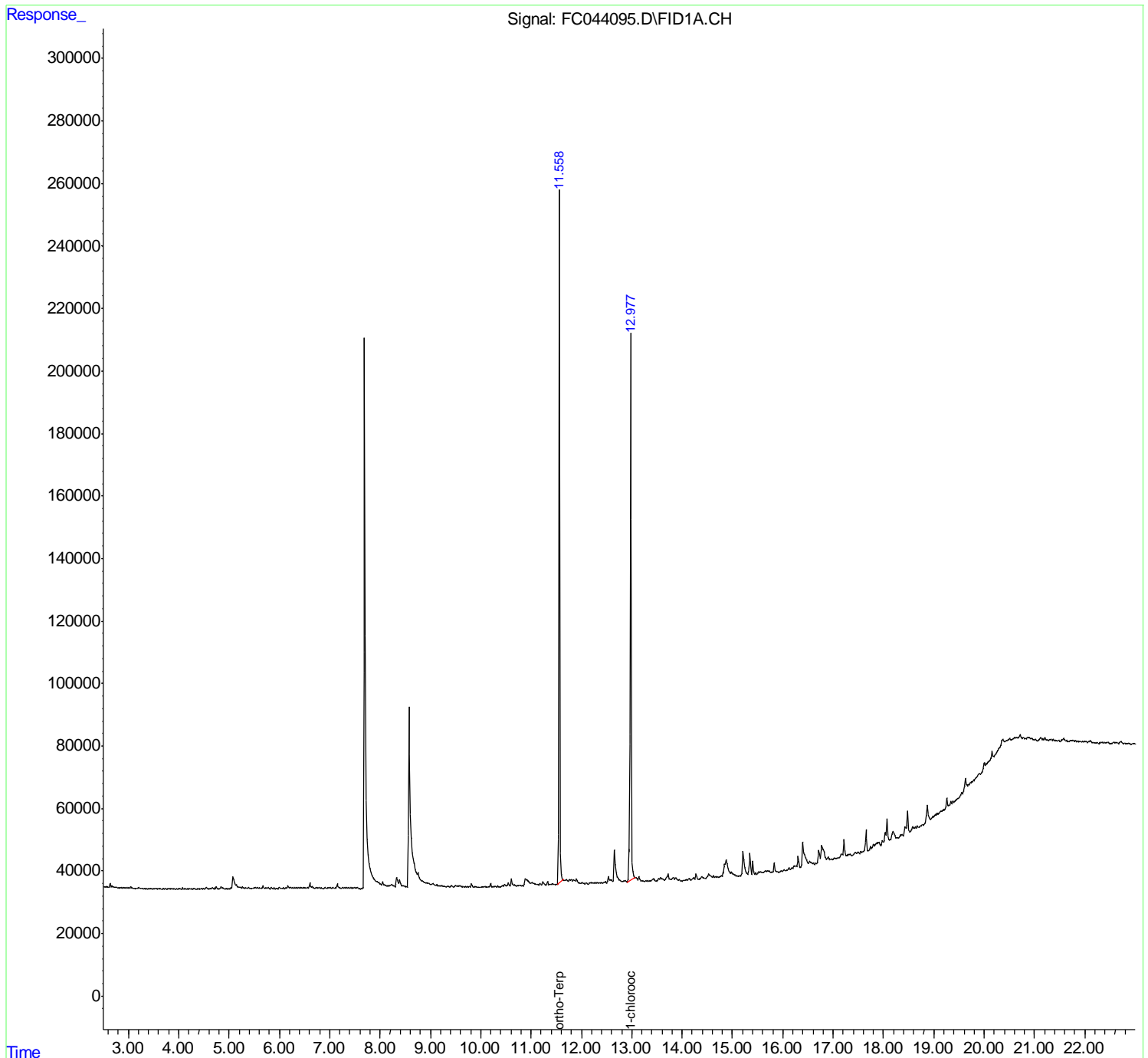
(f)=RT Delta > 1/2 Window

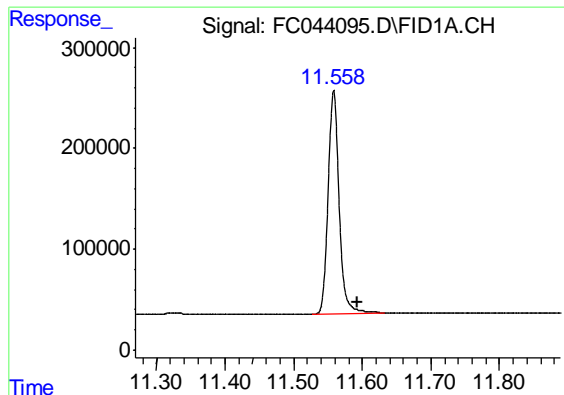
(m)=manual int.

Data Path : Z:\pestpcbsrv\HPCHEM1\FID_C\Data\FC101819AL\
Data File : FC044095.D
Signal(s) : FID1A.CH
Acq On : 18 Oct 2019 11:23
Operator : DD\AJ
Sample : K5393-01DL 2X
Misc :
ALS Vial : 5 Sample Multiplier: 1

Integration File: sample.E
Quant Time: Oct 21 10:22:01 2019
Quant Method : Z:\pestpcbsrv\HPCHEM1\FID_C\Method\Alaphatic EPH 092519.M
Quant Title : GC Extractables
QLast Update : Sat Oct 12 00:05:39 2019
Response via : Initial Calibration
Integrator: ChemStation 6890 Scale Mode: Large solvent peaks clipped

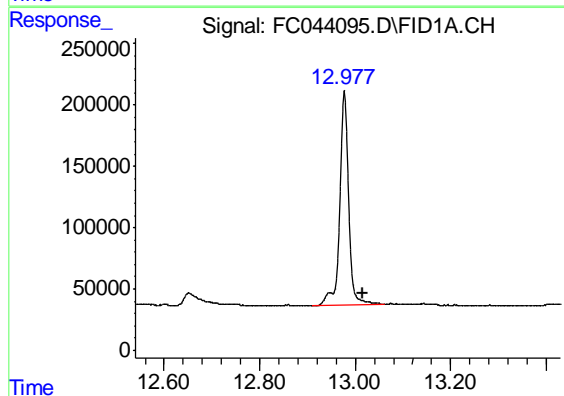
Volume Inj. : 1 ul
Signal Phase : Rxi-1ms
Signal Info : 20M x 0.18mm x 0.18um





#9 ortho-Terphenyl (SURR)

R.T.: 11.559 min
Delta R.T.: -0.034 min
Response: 2453709
Conc: 16.17 ug/ml



#12 1-chlorooctadecane (SURR)

R.T.: 12.977 min
Delta R.T.: -0.038 min
Response: 2239077
Conc: 18.89 ug/ml