

Data Path : Z:\pestpcbsrv\HPCHEM1\FID_C\Data\FC102120AL\
 Data File : FC050279.D
 Signal(s) : FID1A.CH
 Acq On : 22 Oct 2020 6:25
 Operator : DD\AJ
 Sample : L4467-05
 Misc :
 ALS Vial : 24 Sample Multiplier: 1

Instrument :
 FID_C
 ClientSampleId :
 357

Integration File: autoint1.e
 Quant Time: Oct 22 07:26:54 2020
 Quant Method : Z:\pestpcbsrv\HPCHEM1\FID_C\Method\Alaphatic EPH 100620.M
 Quant Title : GC Extractables
 QLast Update : Wed Oct 07 04:53:04 2020
 Response via : Initial Calibration
 Integrator: ChemStation 6890 Scale Mode: Large solvent peaks clipped

Volume Inj. : 1 ul
 Signal Phase : Rxi-1ms
 Signal Info : 20M x 0.18mm x 0.18um

Compound	R.T.	Response	Conc Units

System Monitoring Compounds			
9) S ortho-Terphenyl (SURR)	11.632	4381768	39.091 ug/ml
Spiked Amount	50.000	Recovery	= 78.18%
12) S 1-chlorooctadecane (S...	13.064	3392308	39.161 ug/ml
Spiked Amount	50.000	Recovery	= 78.32%

Target Compounds

(f)=RT Delta > 1/2 Window

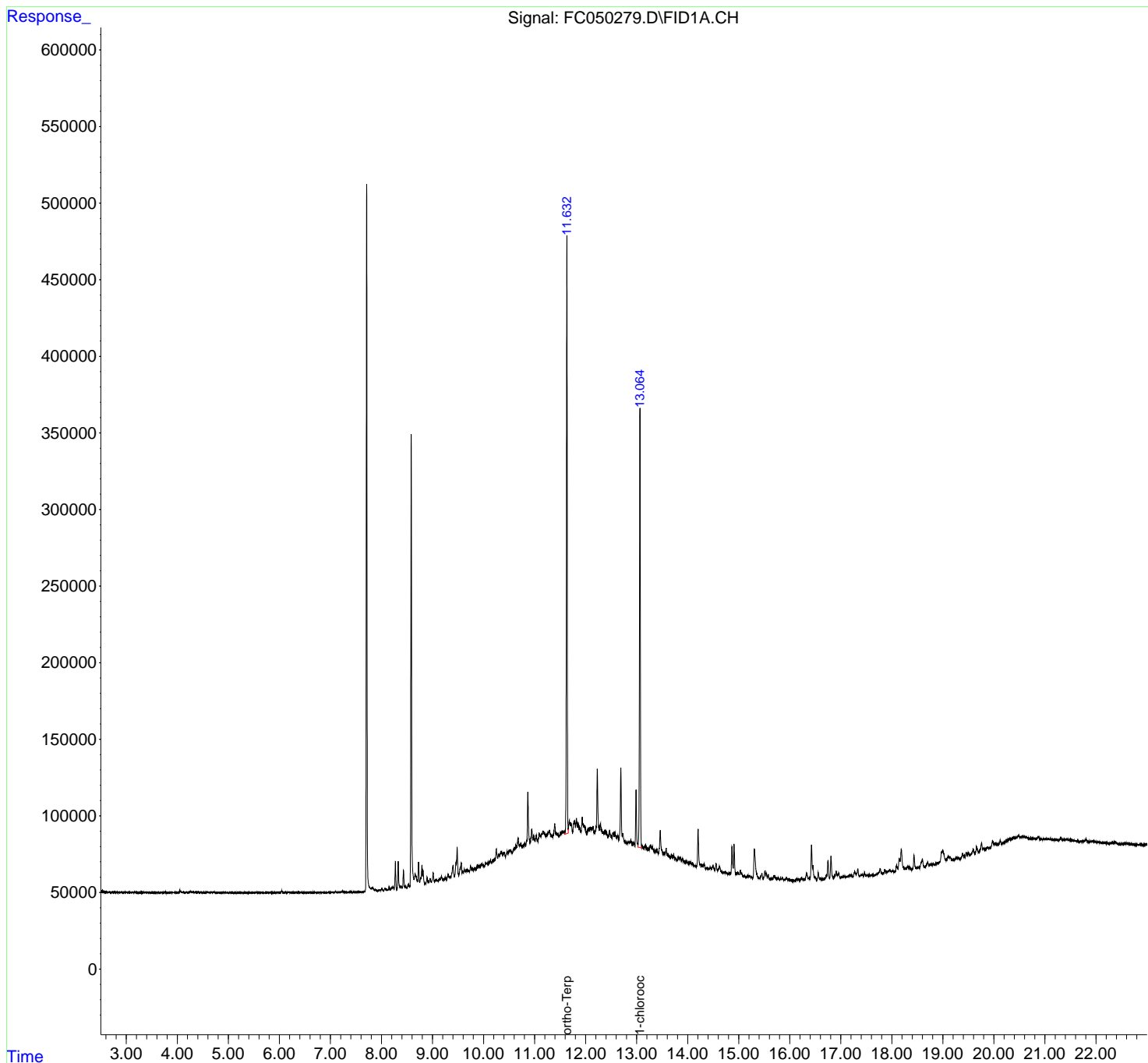
(m)=manual int.

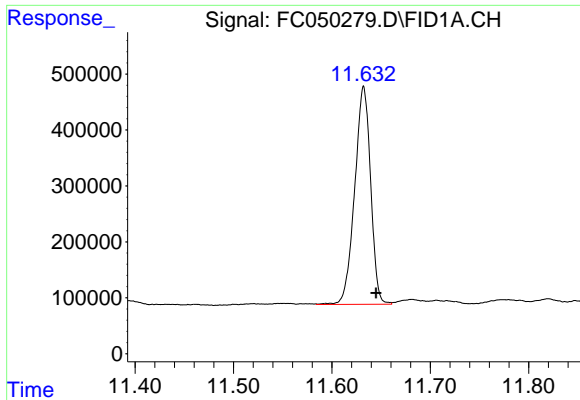
Data Path : Z:\pestpcbsrv\HPCHEM1\FID_C\Data\FC102120AL\
Data File : FC050279.D
Signal(s) : FID1A.CH
Acq On : 22 Oct 2020 6:25
Operator : DD\AJ
Sample : L4467-05
Misc :
ALS Vial : 24 Sample Multiplier: 1

Instrument :
FID_C
ClientSampled :
357

Integration File: autoint1.e
Quant Time: Oct 22 07:26:54 2020
Quant Method : Z:\pestpcbsrv\HPCHEM1\FID_C\Method\Alaphatic EPH 100620.M
Quant Title : GC Extractables
QLast Update : Wed Oct 07 04:53:04 2020
Response via : Initial Calibration
Integrator: ChemStation 6890 Scale Mode: Large solvent peaks clipped

Volume Inj. : 1 ul
Signal Phase : Rxi-1ms
Signal Info : 20M x 0.18mm x 0.18um

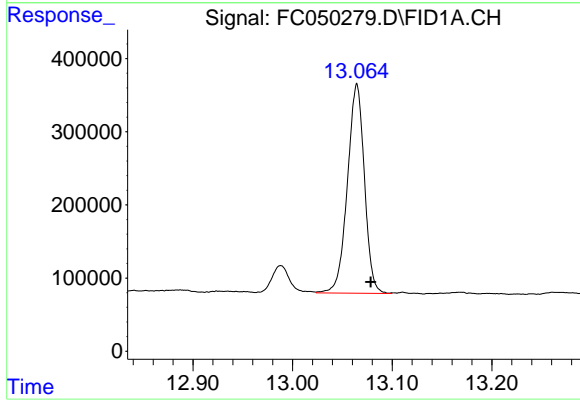




#9 ortho-Terphenyl (SURR)

R.T.: 11.632 min
Delta R.T.: -0.013 min
Response: 4381768
Conc: 39.09 ug/ml

Instrument :
FID_C
ClientSampleId :
357



#12 1-chlorooctadecane (SURR)

R.T.: 13.064 min
Delta R.T.: -0.014 min
Response: 3392308
Conc: 39.16 ug/ml