

Data Path : Z:\pestpcbsrv\HPCHEM1\FID\_C\Data\FC102121AL\  
Data File : FC056299.D  
Signal(s) : FID1A.CH  
Acq On : 21 Oct 2021 1:26  
Operator : AJ\MA  
Sample : I.BLK  
Misc :  
ALS Vial : 1 Sample Multiplier: 1

Instrument :  
FID\_C  
ClientSampleId :  
I.BLK

Integration File: autoint1.e  
Quant Time: Oct 21 02:59:32 2021  
Quant Method : Z:\pestpcbsrv\HPCHEM1\FID\_C\Method\Aliphatic EPH 102121.M  
Quant Title : GC Extractables  
QLast Update : Thu Oct 21 01:00:25 2021  
Response via : Initial Calibration  
Integrator: ChemStation 6890 Scale Mode: Large solvent peaks clipped

Volume Inj. : 1 ul  
Signal Phase : Rxi-1ms  
Signal Info : 20M x 0.18mm x 0.18um

Compound	R.T.	Response	Conc Units
-----			
System Monitoring Compounds			
Target Compounds			
-----			

(f)=RT Delta > 1/2 Window

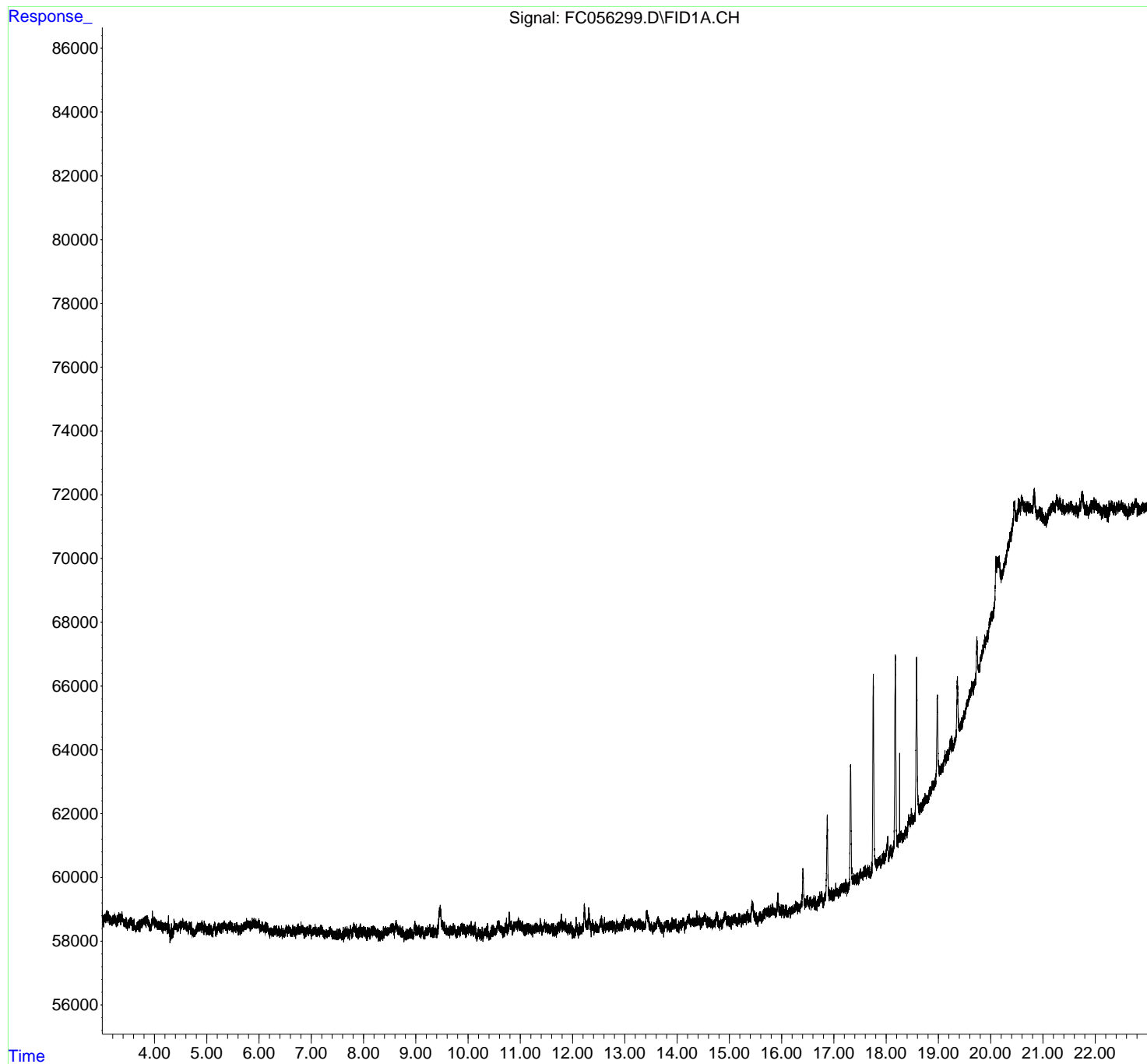
(m)=manual int.

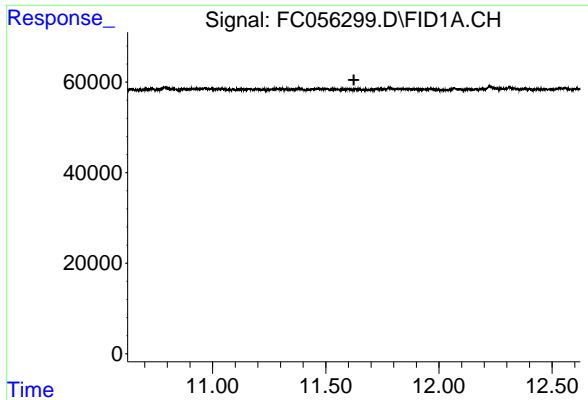
Data Path : Z:\pestpcbsrv\HPCHEM1\FID\_C\Data\FC102121AL\  
Data File : FC056299.D  
Signal(s) : FID1A.CH  
Acq On : 21 Oct 2021 1:26  
Operator : AJ\MA  
Sample : I.BLK  
Misc :  
ALS Vial : 1 Sample Multiplier: 1

Instrument :  
FID\_C  
ClientSampleId :  
I.BLK

Integration File: autoint1.e  
Quant Time: Oct 21 02:59:32 2021  
Quant Method : Z:\pestpcbsrv\HPCHEM1\FID\_C\Method\Aliphatic EPH 102121.M  
Quant Title : GC Extractables  
QLast Update : Thu Oct 21 01:00:25 2021  
Response via : Initial Calibration  
Integrator: ChemStation 6890 Scale Mode: Large solvent peaks clipped

Volume Inj. : 1 ul  
Signal Phase : Rxi-1ms  
Signal Info : 20M x 0.18mm x 0.18um

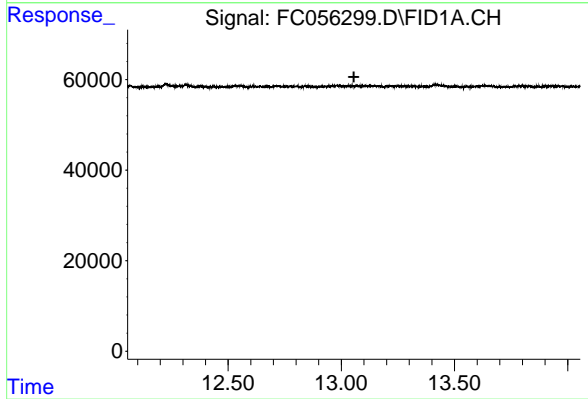




#9 ortho-Terphenyl (SURR)

R.T.: 0.000 min  
Exp R.T. : 11.624 min  
Response: 0  
Conc: N.D.

Instrument :  
FID\_C  
ClientSampleId :  
I.BLK



#12 1-chlorooctadecane (SURR)

R.T.: 0.000 min  
Exp R.T. : 13.056 min  
Response: 0  
Conc: N.D.