

Data Path : Z:\pestpcbsrv\HPCHEM1\FID_C\Data\FC102320AL\
 Data File : FC050327.D
 Signal(s) : FID1A.CH
 Acq On : 23 Oct 2020 20:54
 Operator : DD\AJ
 Sample : 20 PPM ALIPHATIC HC STD
 Misc :
 ALS Vial : 2 Sample Multiplier: 1

Instrument :
 FID_C
 ClientSampled :

Integration File: autoint1.e
 Quant Time: Oct 24 02:26:15 2020
 Quant Method : Z:\pestpcbsrv\HPCHEM1\FID_C\Method\Alaphatic EPH 100620.M
 Quant Title : GC Extractables
 QLast Update : Wed Oct 07 04:53:04 2020
 Response via : Initial Calibration
 Integrator: ChemStation 6890 Scale Mode: Large solvent peaks clipped

Volume Inj. : 1 ul
 Signal Phase : Rxi-1ms
 Signal Info : 20M x 0.18mm x 0.18um

| Compound | R.T. | Response | Conc Units |
|--------------------------------|--------|----------|--------------|
| ----- | | | |
| System Monitoring Compounds | | | |
| 9) S ortho-Terphenyl (SURR) | 11.626 | 2148982 | 19.172 ug/ml |
| Spiked Amount | 50.000 | Recovery | = 38.34% |
| 12) S 1-chlorooctadecane (S... | 13.060 | 1648263 | 19.028 ug/ml |
| Spiked Amount | 50.000 | Recovery | = 38.06% |
| Target Compounds | | | |
| 1) T n-Nonane (C9) | 3.372 | 2079449 | 20.984 ug/ml |
| 2) T n-Decane (C10) | 4.443 | 2082006 | 20.912 ug/ml |
| 3) T A~Naphthalene (C11.7) | 6.037 | 2255220 | 20.461 ug/ml |
| 4) T n-Dodecane (C12) | 6.465 | 2095090 | 20.764 ug/ml |
| 5) T A~2-methylnaphthalene... | 7.096 | 2257877 | 20.285 ug/ml |
| 6) T n-Tetradecane (C14) | 8.262 | 2061639 | 20.579 ug/ml |
| 7) T n-Hexadecane (C16) | 9.863 | 2005013 | 20.344 ug/ml |
| 8) T n-Octadecane (C18) | 11.305 | 2058365 | 19.931 ug/ml |
| 10) T n-Eicosane (C20) | 12.614 | 2020517 | 19.418 ug/ml |
| 11) T n-Heneicosane (C21) | 13.226 | 1993922 | 19.188 ug/ml |
| 13) T n-Docosane (C22) | 13.812 | 1968074 | 18.959 ug/ml |
| 14) T n-Tetracosane (C24) | 14.914 | 1917058 | 18.457 ug/ml |
| 15) T n-Hexacosane (C26) | 15.935 | 1865184 | 18.100 ug/ml |
| 16) T n-Octacosane (C28) | 16.884 | 1853102 | 17.905 ug/ml |
| 17) T n-Tricontane (C30) | 17.771 | 1827460 | 17.908 ug/ml |
| 18) T n-Dotriacontane (C32) | 18.602 | 1724573 | 17.952 ug/ml |
| 19) T n-Tetratriacontane (C34) | 19.384 | 1666786 | 18.172 ug/ml |
| 20) T n-Hexatriacontane (C36) | 20.121 | 1622224 | 18.315 ug/ml |
| 21) T n-Octatriacontane (C38) | 20.867 | 1534133 | 18.605 ug/ml |
| 22) T n-Tetracontane (C40) | 21.798 | 1595638 | 19.082 ug/ml |
| ----- | | | |

(f)=RT Delta > 1/2 Window

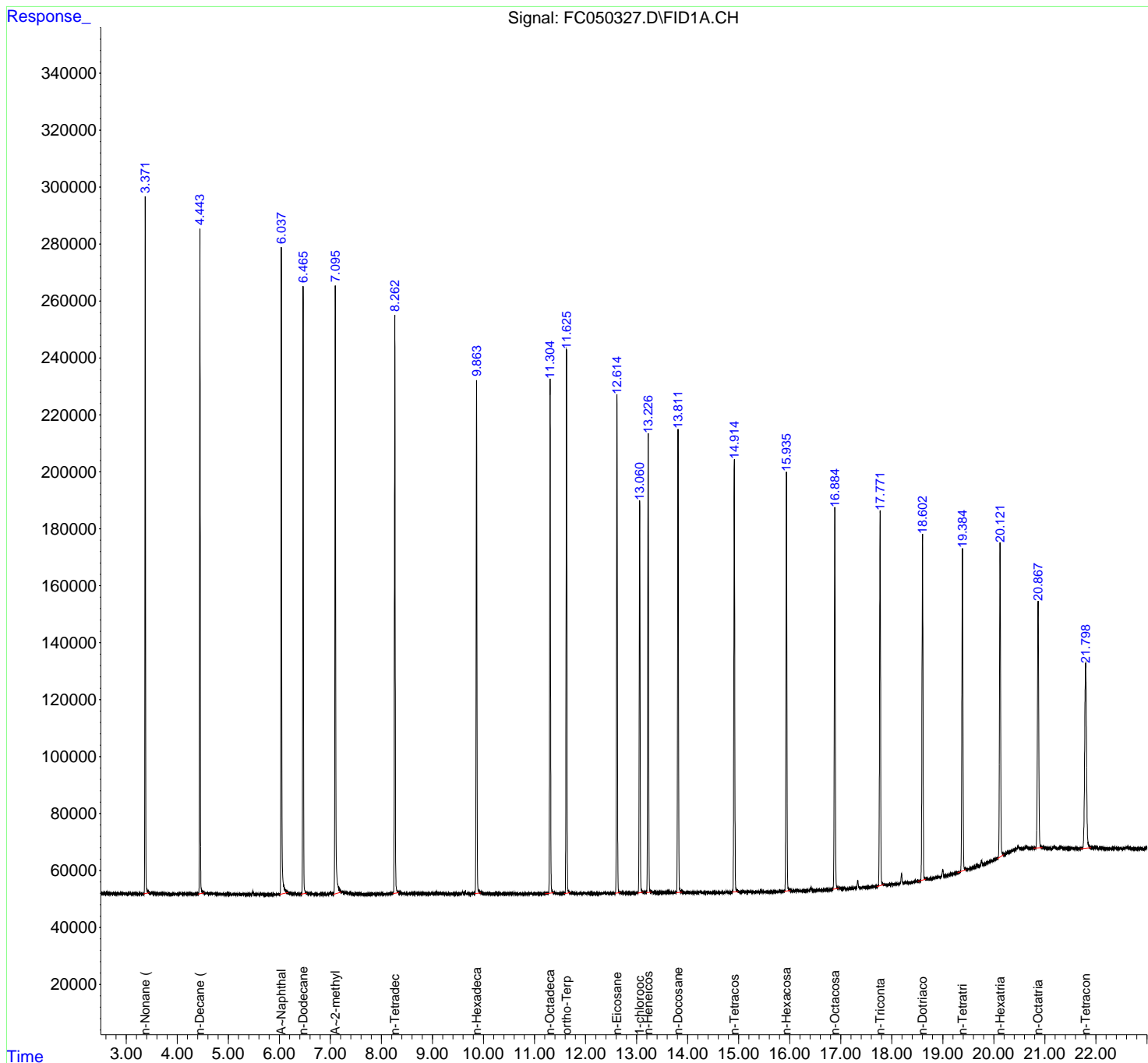
(m)=manual int.

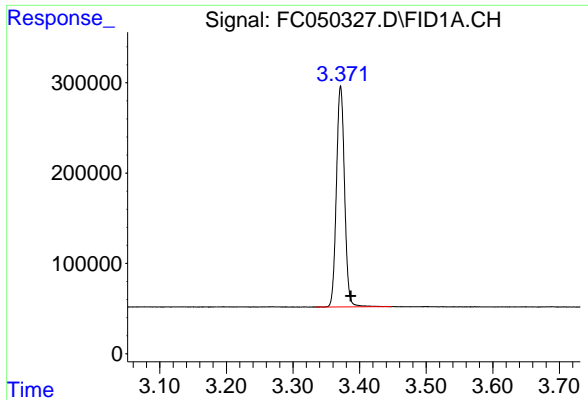
Data Path : Z:\pestpcbsrv\HPCHEM1\FID_C\Data\FC102320AL\
 Data File : FC050327.D
 Signal(s) : FID1A.CH
 Acq On : 23 Oct 2020 20:54
 Operator : DD\AJ
 Sample : 20 PPM ALIPHATIC HC STD
 Misc :
 ALS Vial : 2 Sample Multiplier: 1

Instrument :
 FID_C
 ClientSampled :

Integration File: autoint1.e
 Quant Time: Oct 24 02:26:15 2020
 Quant Method : Z:\pestpcbsrv\HPCHEM1\FID_C\Method\Aliphatic EPH 100620.M
 Quant Title : GC Extractables
 QLast Update : Wed Oct 07 04:53:04 2020
 Response via : Initial Calibration
 Integrator: ChemStation 6890 Scale Mode: Large solvent peaks clipped

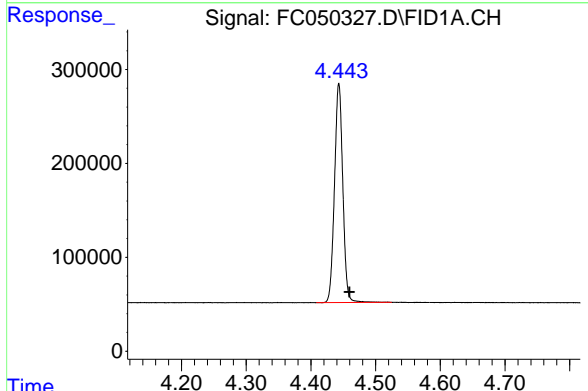
Volume Inj. : 1 ul
 Signal Phase : Rxi-1ms
 Signal Info : 20M x 0.18mm x 0.18um



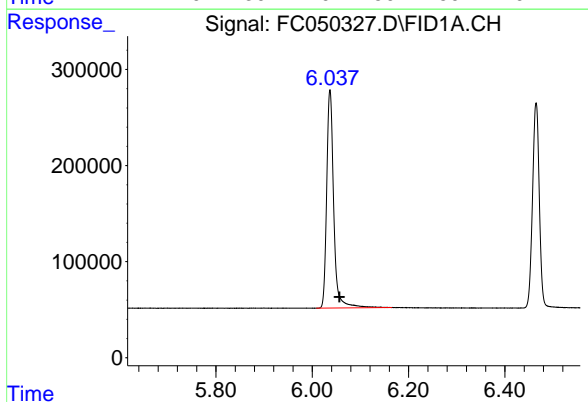


#1 n-Nonane (C9)
 R.T.: 3.372 min
 Delta R.T.: -0.015 min
 Response: 2079449
 Conc: 20.98 ug/ml

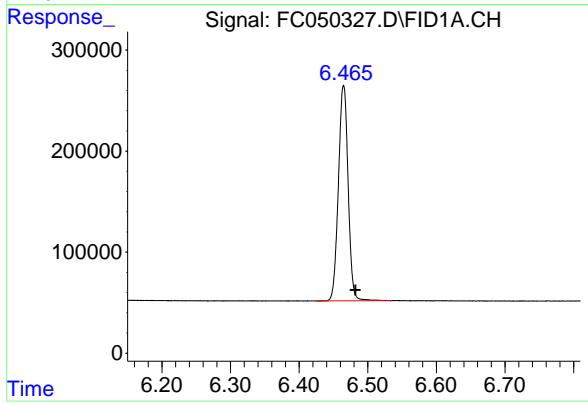
Instrument :
 FID_C
 ClientSampled :



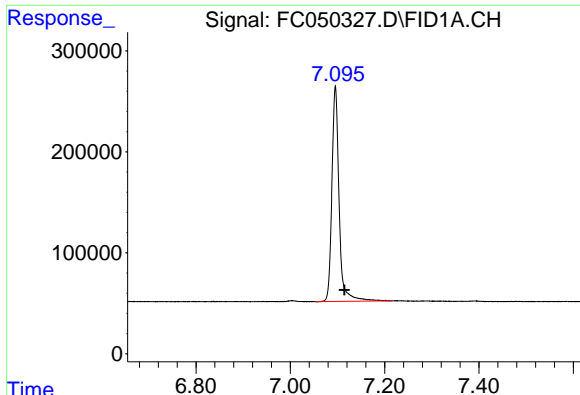
#2 n-Decane (C10)
 R.T.: 4.443 min
 Delta R.T.: -0.016 min
 Response: 2082006
 Conc: 20.91 ug/ml



#3 A~Naphthalene (C11.7)
 R.T.: 6.037 min
 Delta R.T.: -0.019 min
 Response: 2255220
 Conc: 20.46 ug/ml



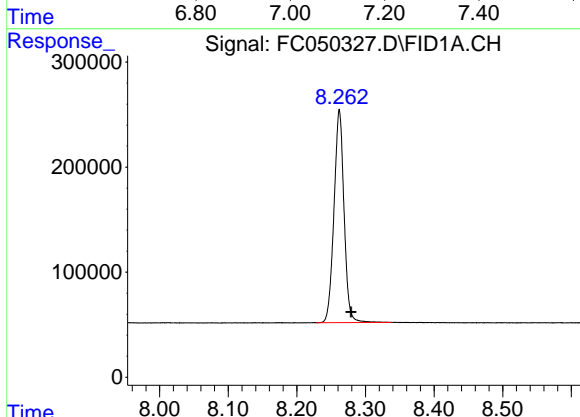
#4 n-Dodecane (C12)
 R.T.: 6.465 min
 Delta R.T.: -0.017 min
 Response: 2095090
 Conc: 20.76 ug/ml



#5 A~2-methylnaphthalene (C12.89)

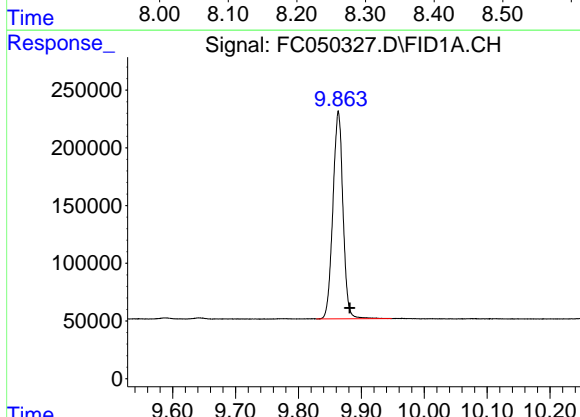
R.T.: 7.096 min
 Delta R.T.: -0.019 min
 Response: 2257877
 Conc: 20.29 ug/ml

Instrument :
 FID_C
 ClientSampled :



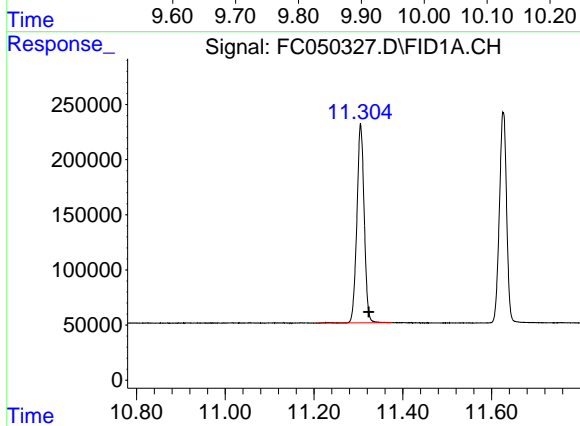
#6 n-Tetradecane (C14)

R.T.: 8.262 min
 Delta R.T.: -0.017 min
 Response: 2061639
 Conc: 20.58 ug/ml



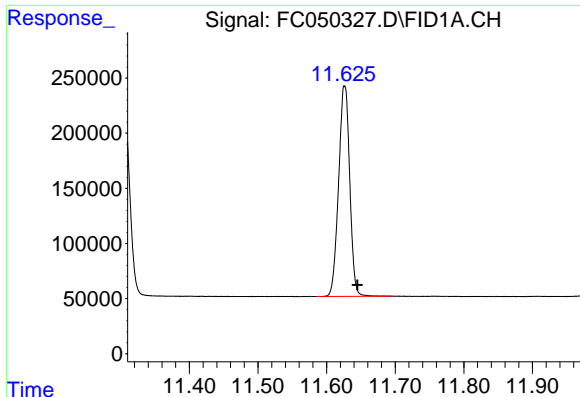
#7 n-Hexadecane (C16)

R.T.: 9.863 min
 Delta R.T.: -0.018 min
 Response: 2005013
 Conc: 20.34 ug/ml



#8 n-Octadecane (C18)

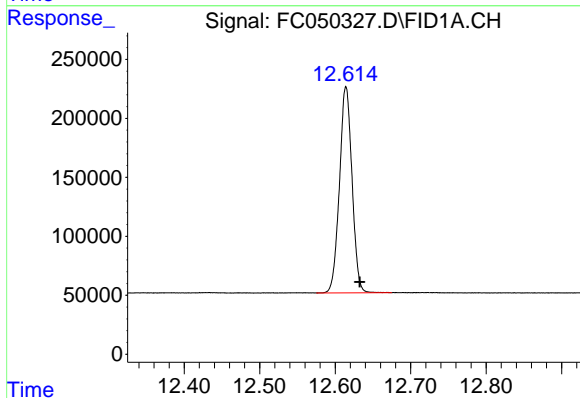
R.T.: 11.305 min
 Delta R.T.: -0.018 min
 Response: 2058365
 Conc: 19.93 ug/ml



#9 ortho-Terphenyl (SURR)

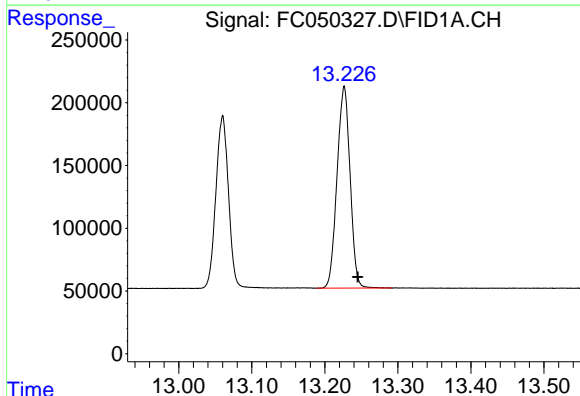
R.T.: 11.626 min
 Delta R.T.: -0.019 min
 Response: 2148982
 Conc: 19.17 ug/ml

Instrument :
 FID_C
 ClientSampleId :



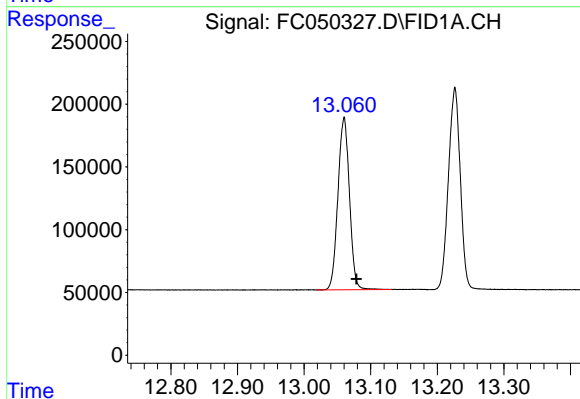
#10 n-Eicosane (C20)

R.T.: 12.614 min
 Delta R.T.: -0.018 min
 Response: 2020517
 Conc: 19.42 ug/ml



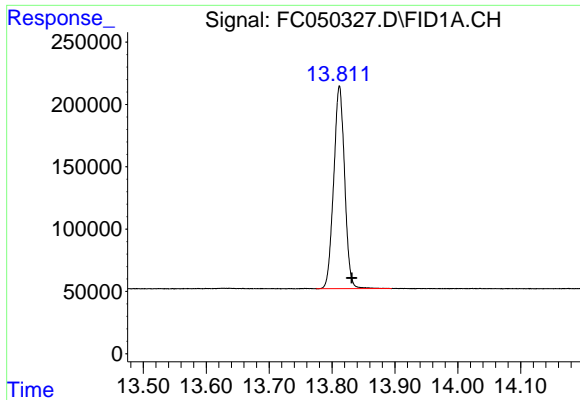
#11 n-Heneicosane (C21)

R.T.: 13.226 min
 Delta R.T.: -0.019 min
 Response: 1993922
 Conc: 19.19 ug/ml



#12 1-chlorooctadecane (SURR)

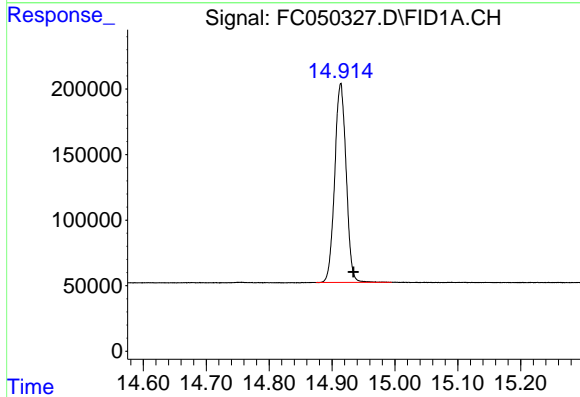
R.T.: 13.060 min
 Delta R.T.: -0.018 min
 Response: 1648263
 Conc: 19.03 ug/ml



#13 n-Docosane (C22)

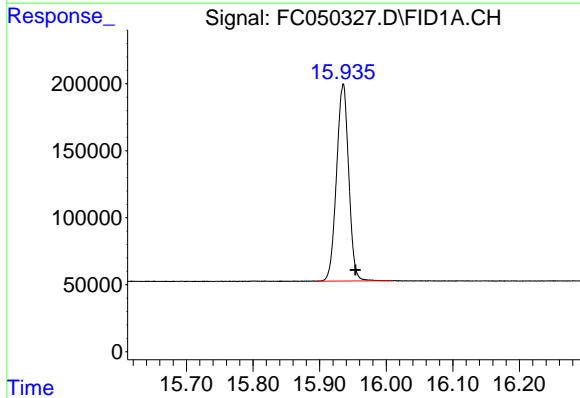
R.T.: 13.812 min
Delta R.T.: -0.020 min
Response: 1968074
Conc: 18.96 ug/ml

Instrument :
FID_C
ClientSampled :



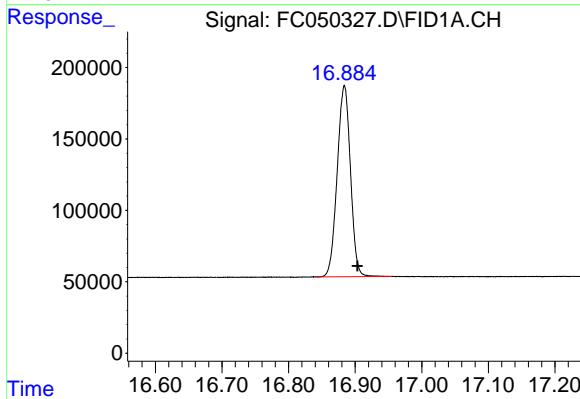
#14 n-Tetracosane (C24)

R.T.: 14.914 min
Delta R.T.: -0.021 min
Response: 1917058
Conc: 18.46 ug/ml



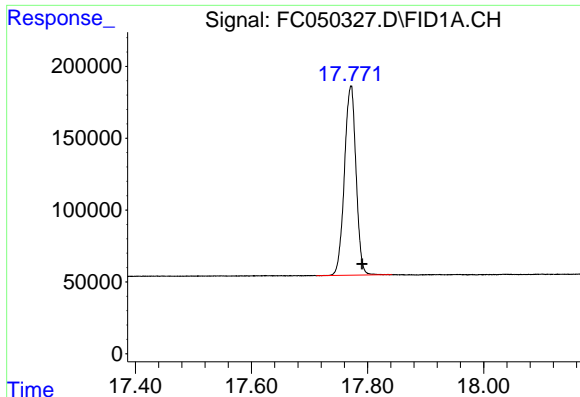
#15 n-Hexacosane (C26)

R.T.: 15.935 min
Delta R.T.: -0.019 min
Response: 1865184
Conc: 18.10 ug/ml



#16 n-Octacosane (C28)

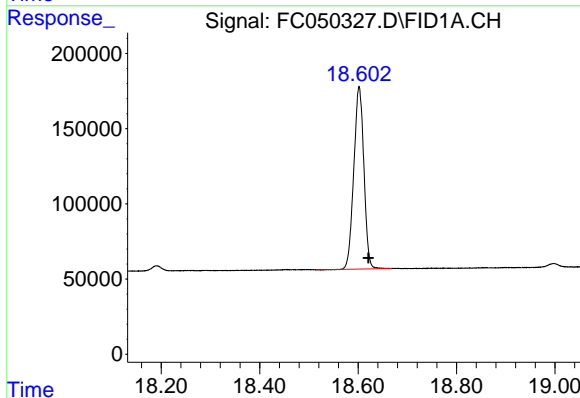
R.T.: 16.884 min
Delta R.T.: -0.020 min
Response: 1853102
Conc: 17.91 ug/ml



#17 n-Tricontane (C30)

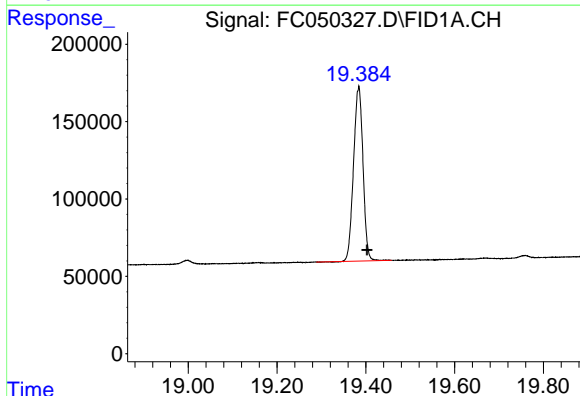
R.T.: 17.771 min
Delta R.T.: -0.020 min
Response: 1827460
Conc: 17.91 ug/ml

Instrument :
FID_C
ClientSampled :



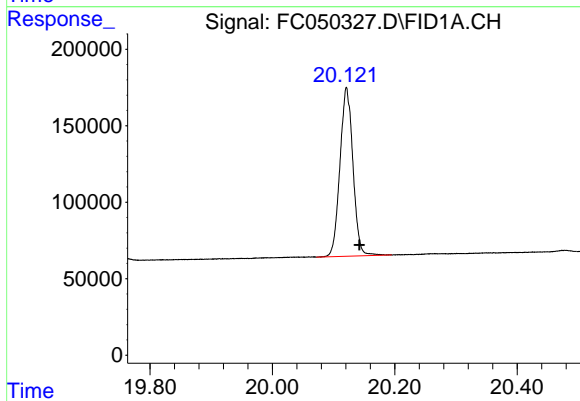
#18 n-Dotriacontane (C32)

R.T.: 18.602 min
Delta R.T.: -0.019 min
Response: 1724573
Conc: 17.95 ug/ml



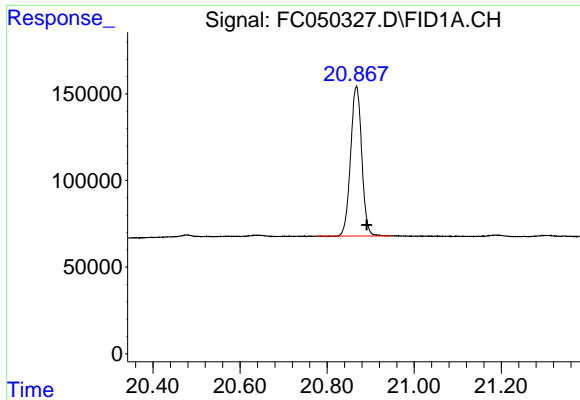
#19 n-Tetratriacontane (C34)

R.T.: 19.384 min
Delta R.T.: -0.019 min
Response: 1666786
Conc: 18.17 ug/ml



#20 n-Hexatriacontane (C36)

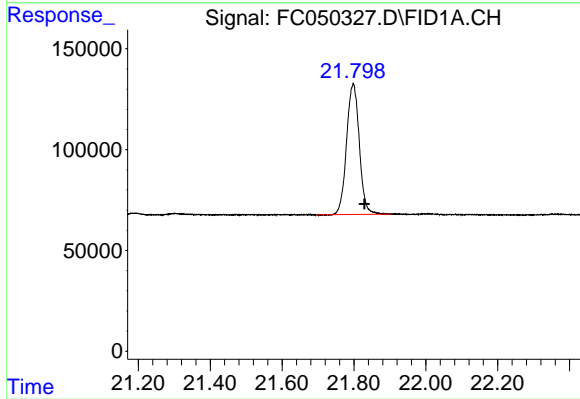
R.T.: 20.121 min
Delta R.T.: -0.021 min
Response: 1622224
Conc: 18.31 ug/ml



#21 n-Octatriacontane (C38)

R.T.: 20.867 min
Delta R.T.: -0.024 min
Response: 1534133
Conc: 18.61 ug/ml

Instrument :
FID_C
ClientSampleId :



#22 n-Tetracontane (C40)

R.T.: 21.798 min
Delta R.T.: -0.031 min
Response: 1595638
Conc: 19.08 ug/ml