

Data Path : Z:\pestpcbsrv\HPCHEM1\FID_C\Data\F102324AL\
 Data File : FC067508.D
 Signal(s) : FID1A.ch
 Acq On : 23 Oct 2024 16:25
 Operator : YP/AJ
 Sample : 20 PPM ALIPHATIC HC STD3
 Misc :
 ALS Vial : 13 Sample Multiplier: 1

Instrument :
 FID_C
ClientSampleId :
 20 PPM ALIPHATIC HC STD3

Integration File: autoint1.e
 Quant Time: Oct 23 17:17:15 2024
 Quant Method : Z:\pestpcbsrv\HPCHEM1\FID_C\Method\Aliphatic EPH 102324.M
 Quant Title : GC Extractables
 QLast Update : Wed Oct 23 17:16:59 2024
 Response via : Initial Calibration
 Integrator: ChemStation

Volume Inj. : 1 ul
 Signal Phase : Rxi-1ms
 Signal Info : 20M x 0.18mm x 0.18um

Compound	R.T.	Response	Conc Units

System Monitoring Compounds			
9) S ortho-Terphenyl (SURR)	11.496	2885453	20.000 ug/ml
Spiked Amount	50.000	Recovery	= 40.00%
12) S 1-chlorooctadecane (S...	12.935	2131037	20.000 ug/ml
Spiked Amount	50.000	Recovery	= 40.00%
Target Compounds			
1) T n-Nonane (C9)	3.275	2673666	20.000 ug/ml
2) T n-Decane (C10)	4.339	2702691	20.000 ug/ml
3) T A~Naphthalene (C11.7)	5.916	2941492	20.000 ug/ml
4) T n-Dodecane (C12)	6.354	2685213	20.000 ug/ml
5) T A~2-methylnaphthalene...	6.971	2804469	20.000 ug/ml
6) T n-Tetradecane (C14)	8.146	2596600	20.000 ug/ml
7) T n-Hexadecane (C16)	9.745	2611645	20.000 ug/ml
8) T n-Octadecane (C18)	11.185	2610385	20.000 ug/ml
10) T n-Eicosane (C20)	12.492	2486010	20.000 ug/ml
11) T n-Heneicosane (C21)	13.103	2429615	20.000 ug/ml
13) T n-Docosane (C22)	13.688	2410406	20.000 ug/ml
14) T n-Tetracosane (C24)	14.790	2385181	20.000 ug/ml
15) T n-Hexacosane (C26)	15.809	2344463	20.000 ug/ml
16) T n-Octacosane (C28)	16.757	2318777	20.000 ug/ml
17) T n-Tricontane (C30)	17.644	2378909	20.000 ug/ml
18) T n-Dotriacontane (C32)	18.475	2323289	20.000 ug/ml
19) T n-Tetratriacontane (C34)	19.258	2065430	20.000 ug/ml
20) T n-Hexatriacontane (C36)	19.995	1794670	20.000 ug/ml
21) T n-Octatriacontane (C38)	20.718	1712685	20.000 ug/ml
22) T n-Tetracontane (C40)	21.604	1679680	20.000 ug/ml

(f)=RT Delta > 1/2 Window

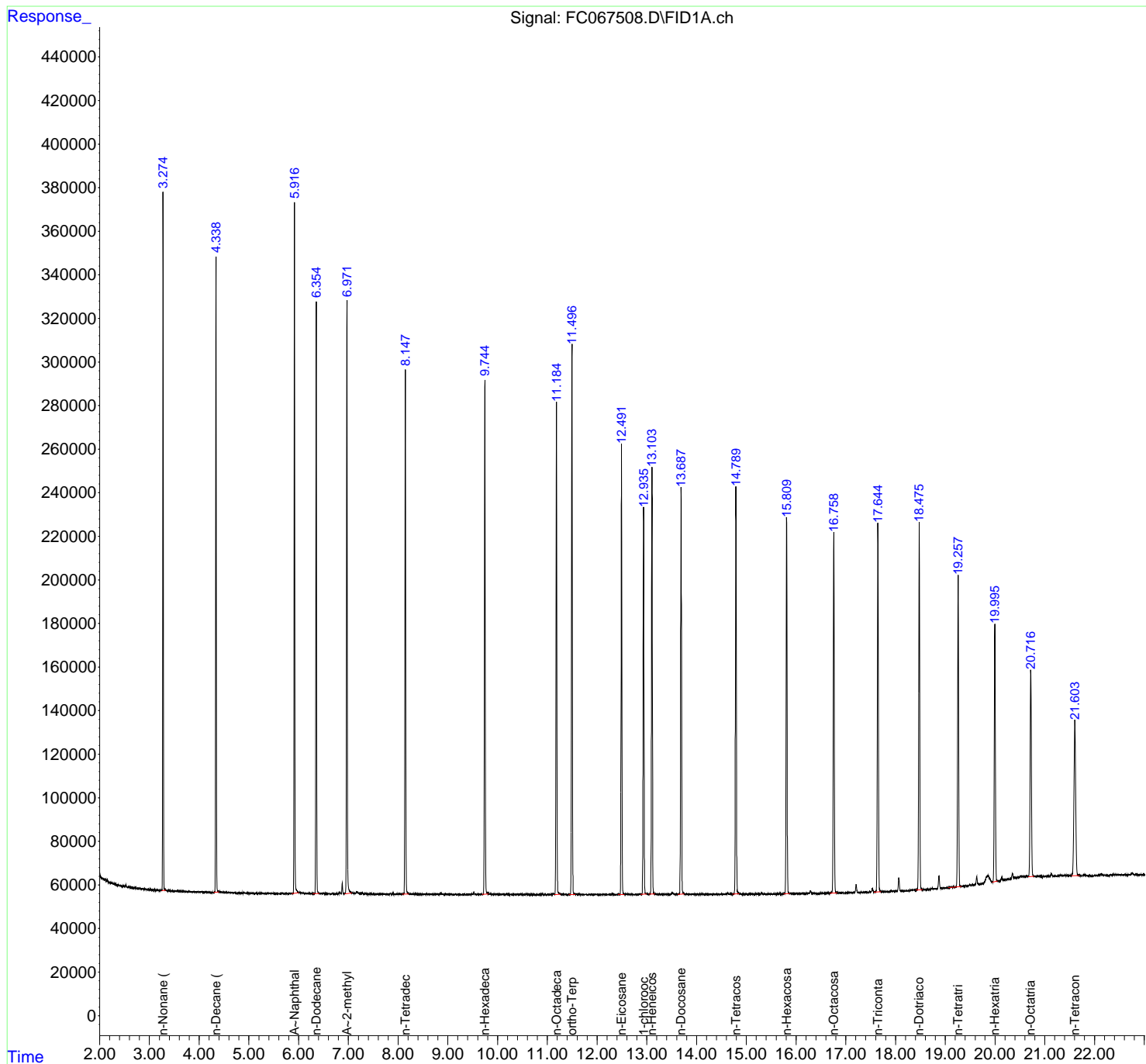
(m)=manual int.

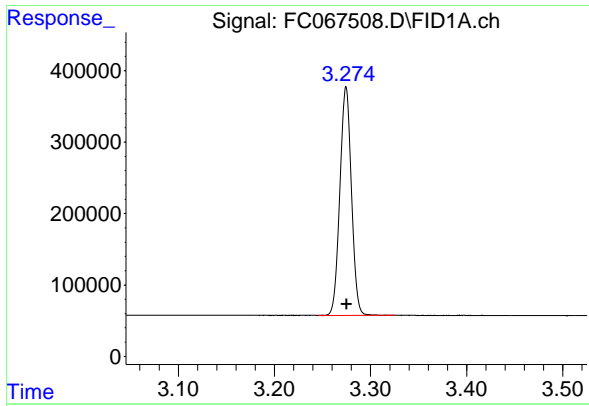
Data Path : Z:\pestpcbsrv\HPCHEM1\FID_C\Data\FC102324AL\
 Data File : FC067508.D
 Signal(s) : FID1A.ch
 Acq On : 23 Oct 2024 16:25
 Operator : YP/AJ
 Sample : 20 PPM ALIPHATIC HC STD3
 Misc :
 ALS Vial : 13 Sample Multiplier: 1

Instrument :
 FID_C
 ClientSampleId :
 20 PPM ALIPHATIC HC STD3

Integration File: autoint1.e
 Quant Time: Oct 23 17:17:15 2024
 Quant Method : Z:\pestpcbsrv\HPCHEM1\FID_C\Method\Aliphatic EPH 102324.M
 Quant Title : GC Extractables
 QLast Update : Wed Oct 23 17:16:59 2024
 Response via : Initial Calibration
 Integrator: ChemStation

Volume Inj. : 1 ul
 Signal Phase : Rxi-1ms
 Signal Info : 20M x 0.18mm x 0.18um

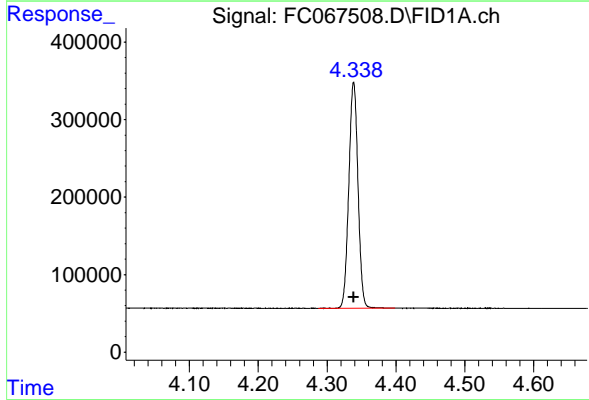




#1 n-Nonane (C9)

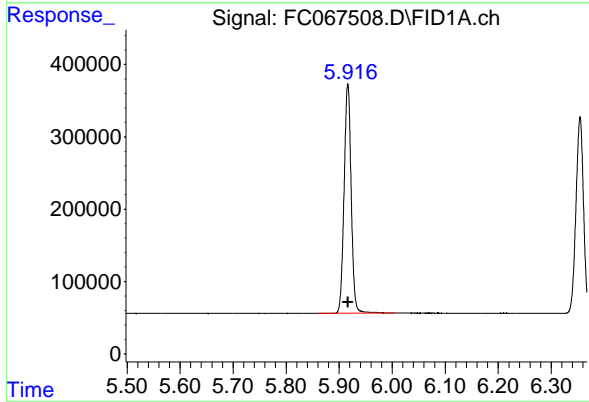
R.T.: 3.275 min
 Delta R.T.: 0.000 min
 Response: 2673666
 Conc: 20.00 ug/ml

Instrument : FID_C
 ClientSampleId : 20 PPM ALIPHATIC HC STD3



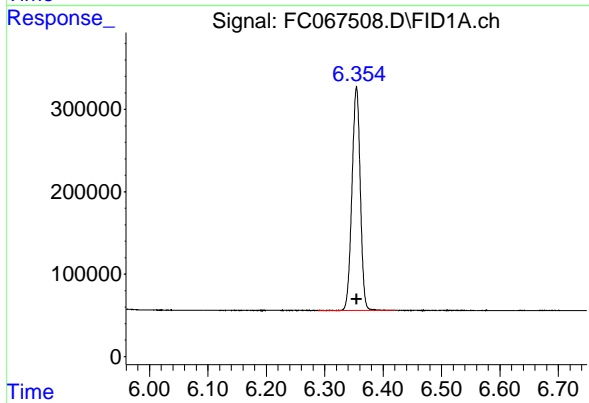
#2 n-Decane (C10)

R.T.: 4.339 min
 Delta R.T.: 0.000 min
 Response: 2702691
 Conc: 20.00 ug/ml



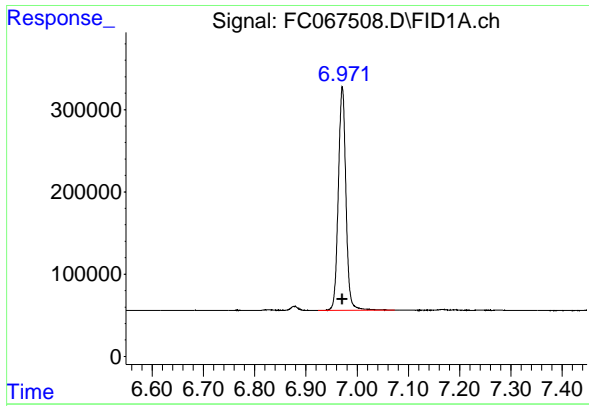
#3 A~Naphthalene (C11.7)

R.T.: 5.916 min
 Delta R.T.: 0.000 min
 Response: 2941492
 Conc: 20.00 ug/ml



#4 n-Dodecane (C12)

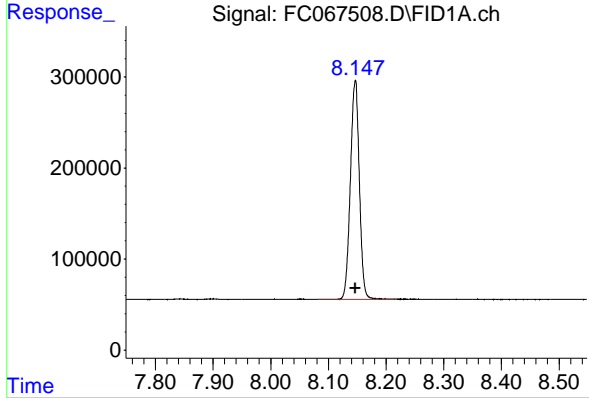
R.T.: 6.354 min
 Delta R.T.: 0.000 min
 Response: 2685213
 Conc: 20.00 ug/ml



#5 A~2-methylnaphthalene (C12.89)

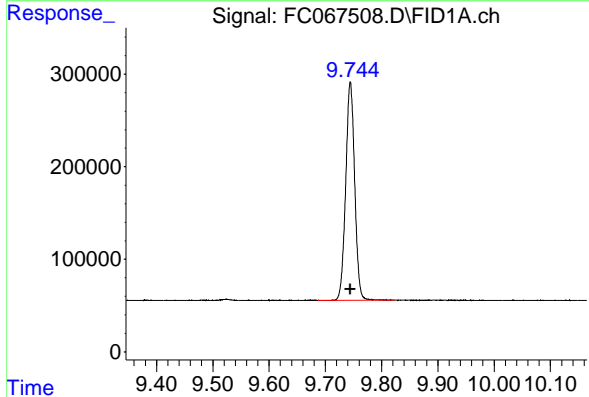
R.T.: 6.971 min
 Delta R.T.: 0.000 min
 Response: 2804469
 Conc: 20.00 ug/ml

Instrument : FID_C
 ClientSampleId : 20 PPM ALIPHATIC HC STD3



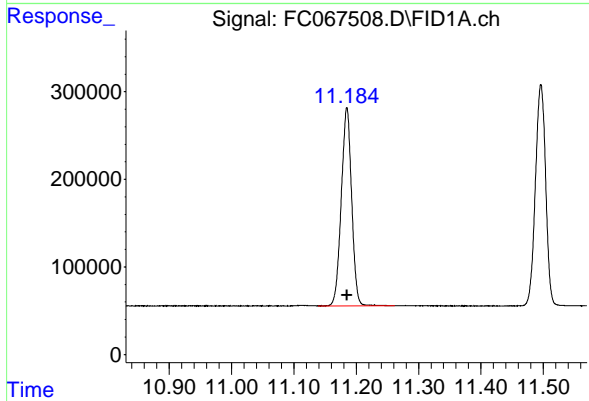
#6 n-Tetradecane (C14)

R.T.: 8.146 min
 Delta R.T.: 0.000 min
 Response: 2596600
 Conc: 20.00 ug/ml



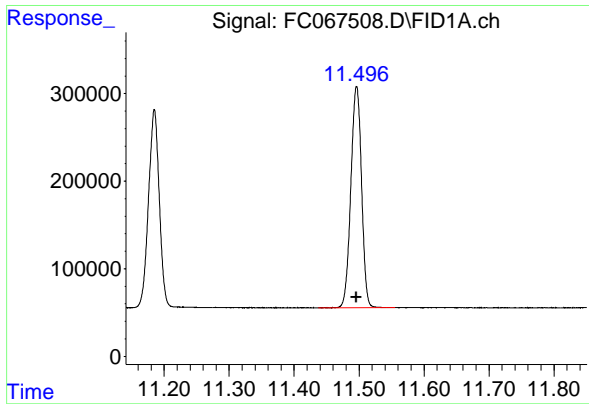
#7 n-Hexadecane (C16)

R.T.: 9.745 min
 Delta R.T.: 0.000 min
 Response: 2611645
 Conc: 20.00 ug/ml



#8 n-Octadecane (C18)

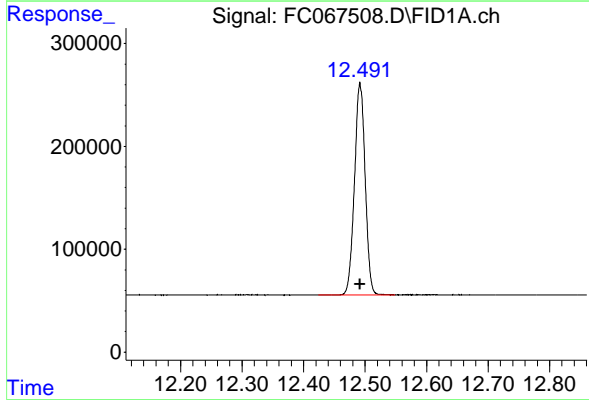
R.T.: 11.185 min
 Delta R.T.: 0.000 min
 Response: 2610385
 Conc: 20.00 ug/ml



#9 ortho-Terphenyl (SURR)

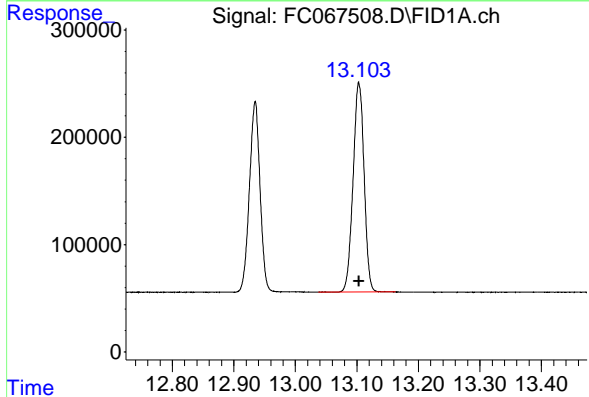
R.T.: 11.496 min
 Delta R.T.: 0.000 min
 Response: 2885453
 Conc: 20.00 ug/ml

Instrument : FID_C
 ClientSampleId : 20 PPM ALIPHATIC HC STD3



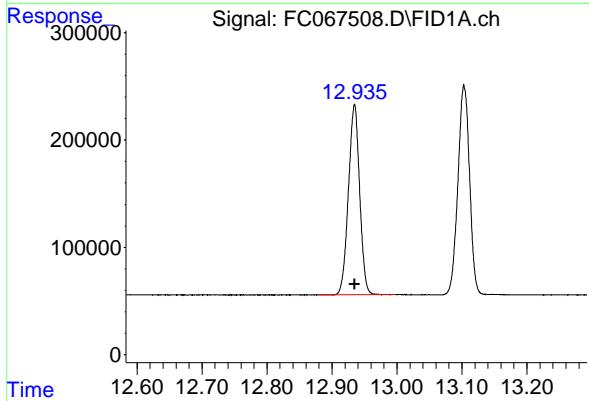
#10 n-Eicosane (C20)

R.T.: 12.492 min
 Delta R.T.: 0.000 min
 Response: 2486010
 Conc: 20.00 ug/ml



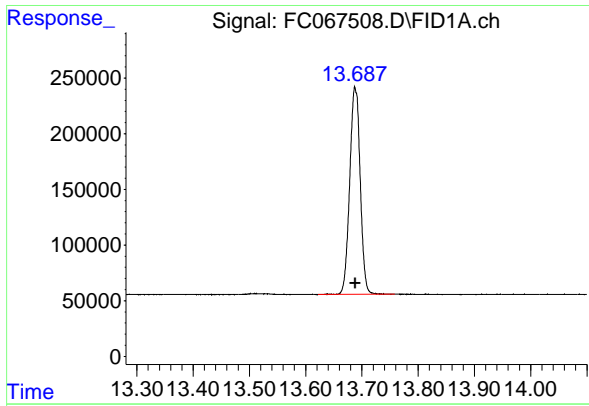
#11 n-Heneicosane (C21)

R.T.: 13.103 min
 Delta R.T.: 0.000 min
 Response: 2429615
 Conc: 20.00 ug/ml



#12 1-chlorooctadecane (SURR)

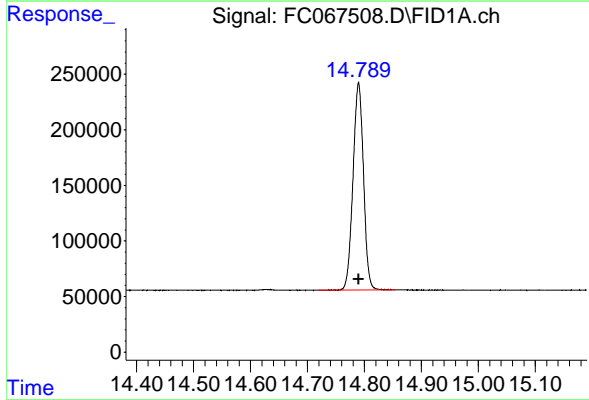
R.T.: 12.935 min
 Delta R.T.: 0.000 min
 Response: 2131037
 Conc: 20.00 ug/ml



#13 n-Docosane (C22)

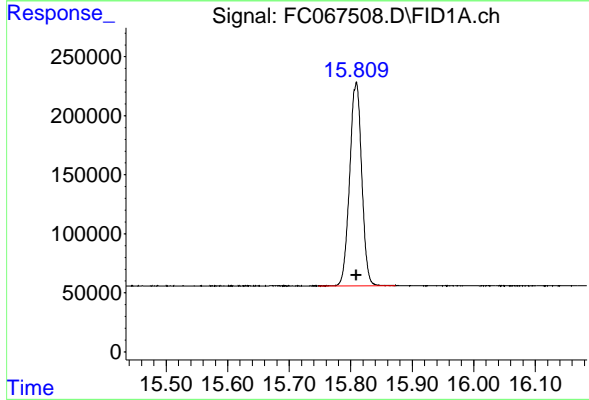
R.T.: 13.688 min
 Delta R.T.: 0.000 min
 Response: 2410406
 Conc: 20.00 ug/ml

Instrument :
 FID_C
 ClientSampleId :
 20 PPM ALIPHATIC HC STD3



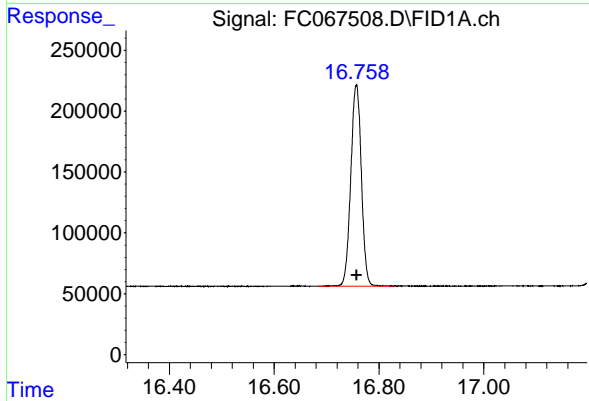
#14 n-Tetracosane (C24)

R.T.: 14.790 min
 Delta R.T.: 0.000 min
 Response: 2385181
 Conc: 20.00 ug/ml



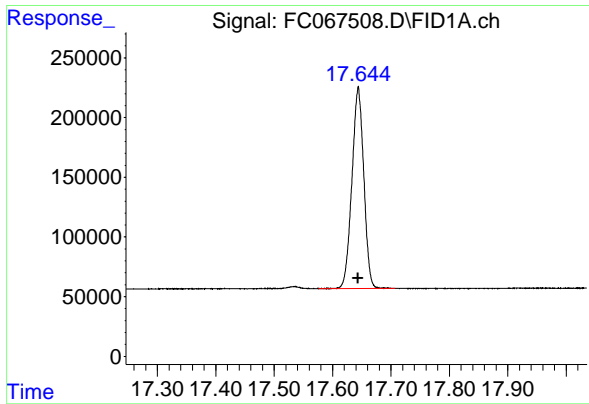
#15 n-Hexacosane (C26)

R.T.: 15.809 min
 Delta R.T.: 0.000 min
 Response: 2344463
 Conc: 20.00 ug/ml



#16 n-Octacosane (C28)

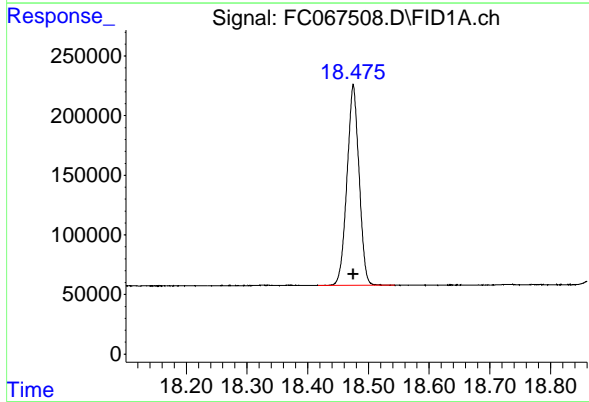
R.T.: 16.757 min
 Delta R.T.: 0.000 min
 Response: 2318777
 Conc: 20.00 ug/ml



#17 n-Tricontane (C30)

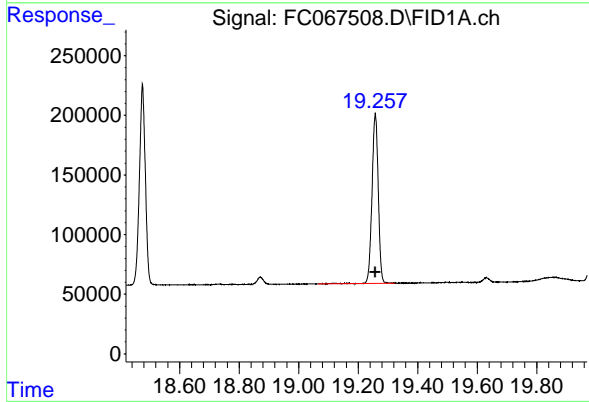
R.T.: 17.644 min
Delta R.T.: 0.000 min
Response: 2378909
Conc: 20.00 ug/ml

Instrument :
FID_C
ClientSampleId :
20 PPM ALIPHATIC HC STD3



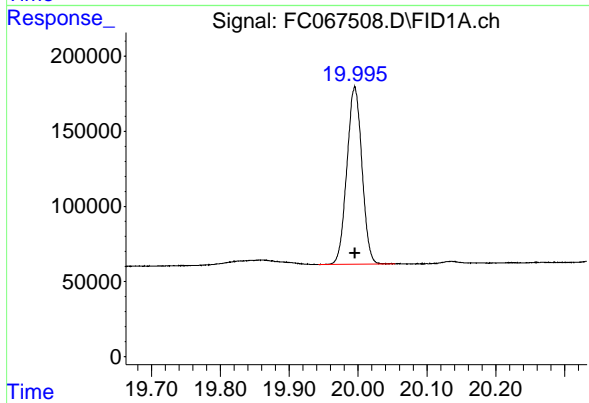
#18 n-Dotriacontane (C32)

R.T.: 18.475 min
Delta R.T.: 0.000 min
Response: 2323289
Conc: 20.00 ug/ml



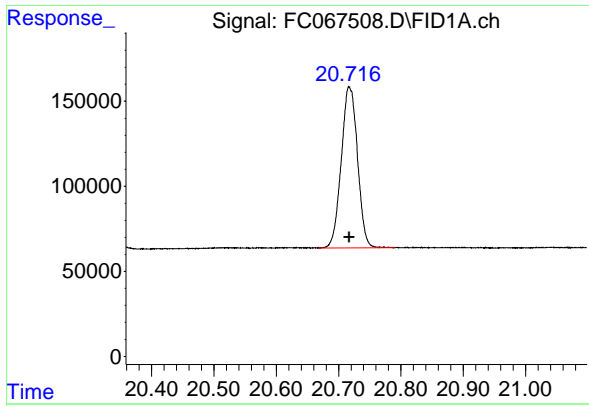
#19 n-Tetraatriacontane (C34)

R.T.: 19.258 min
Delta R.T.: 0.000 min
Response: 2065430
Conc: 20.00 ug/ml



#20 n-Hexatriacontane (C36)

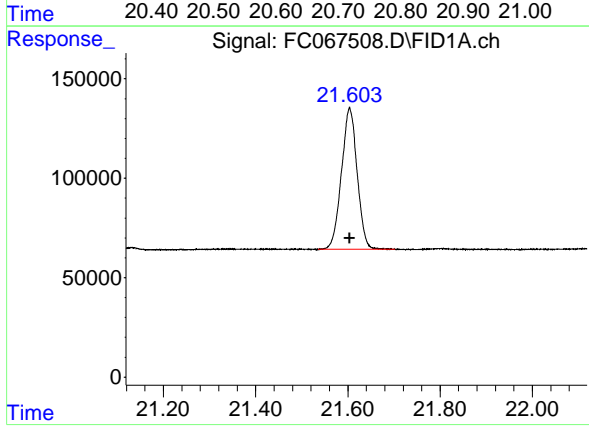
R.T.: 19.995 min
Delta R.T.: 0.000 min
Response: 1794670
Conc: 20.00 ug/ml



#21 n-Octatriacontane (C38)

R.T.: 20.718 min
Delta R.T.: 0.000 min
Response: 1712685
Conc: 20.00 ug/ml

Instrument :
FID_C
ClientSampleId :
20 PPM ALIPHATIC HC STD3



#22 n-Tetracontane (C40)

R.T.: 21.604 min
Delta R.T.: 0.000 min
Response: 1679680
Conc: 20.00 ug/ml