

Data Path : Z:\pestpcbsrv\HPCHEM1\FID\_C\Data\FC102418AL\  
 Data File : FC037068.D  
 Signal(s) : FID1A.CH  
 Acq On : 24 Oct 2018 18:20  
 Operator : AJ\SJ  
 Sample : J5626-01DL 50X  
 Misc :  
 ALS Vial : 10 Sample Multiplier: 1

Integration File: autoint1.e  
 Quant Time: Oct 25 05:54:37 2018  
 Quant Method : Z:\pestpcbsrv\HPCHEM1\FID\_C\Method\Alaphatic EPH 101718.M  
 Quant Title : GC Extractables  
 QLast Update : Fri Oct 19 15:53:26 2018  
 Response via : Initial Calibration  
 Integrator: ChemStation 6890 Scale Mode: Large solvent peaks clipped

Volume Inj. : 1 ul  
 Signal Phase : Rxi-1ms  
 Signal Info : 20M x 0.18mm x 0.18um

Compound	R.T.	Response	Conc Units
-----			
System Monitoring Compounds			
Target Compounds			
18) T n-Dotriacontane (C32)	18.333	103375	1.289 ug/ml
19) T n-Tetratriacontane (C34)	19.127	233358	3.257 ug/ml
20) T n-Hexatriacontane (C36)	19.858	367686	5.371 ug/ml
21) T n-Octatriacontane (C38)	20.561	560769	8.461 ug/ml
-----			

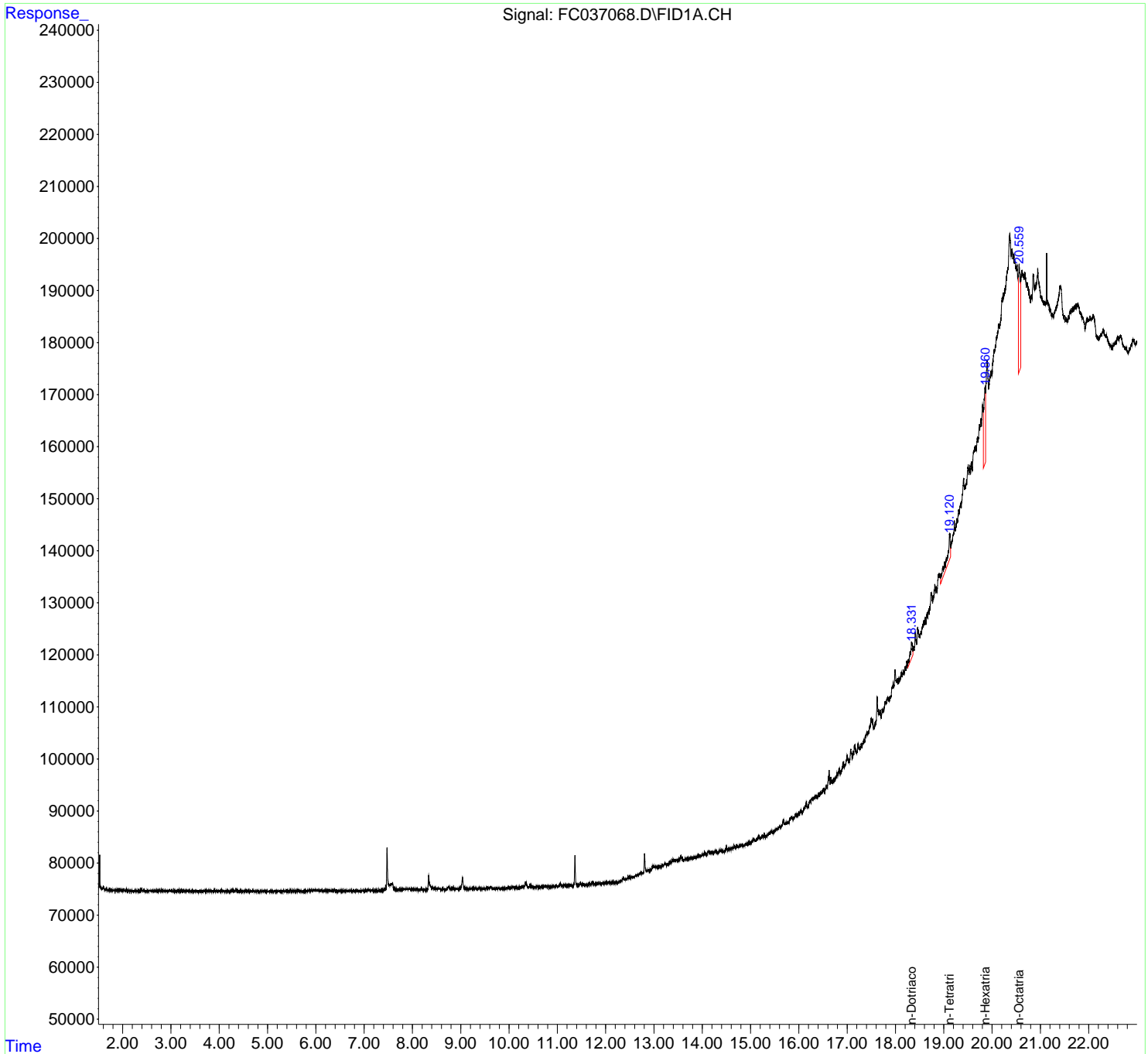
(f)=RT Delta > 1/2 Window

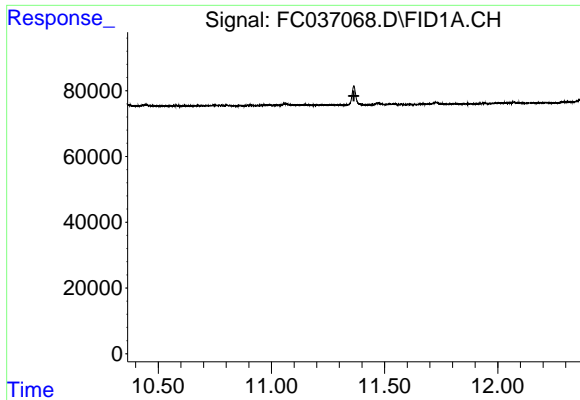
(m)=manual int.

Data Path : Z:\pestpcbsrv\HPCHEM1\FID\_C\Data\FC102418AL\  
Data File : FC037068.D  
Signal(s) : FID1A.CH  
Acq On : 24 Oct 2018 18:20  
Operator : AJ\SJ  
Sample : J5626-01DL 50X  
Misc :  
ALS Vial : 10 Sample Multiplier: 1

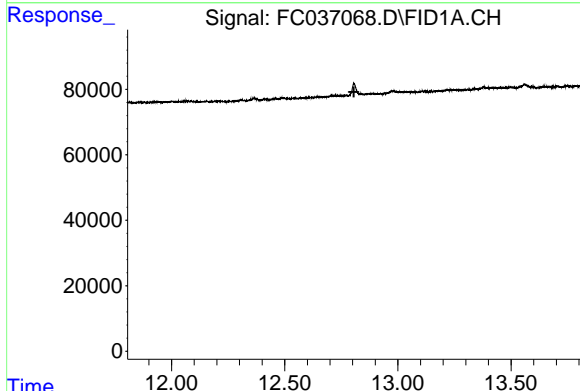
Integration File: autoint1.e  
Quant Time: Oct 25 05:54:37 2018  
Quant Method : Z:\pestpcbsrv\HPCHEM1\FID\_C\Method\Aliphatic EPH 101718.M  
Quant Title : GC Extractables  
QLast Update : Fri Oct 19 15:53:26 2018  
Response via : Initial Calibration  
Integrator: ChemStation 6890 Scale Mode: Large solvent peaks clipped

Volume Inj. : 1 ul  
Signal Phase : Rxi-1ms  
Signal Info : 20M x 0.18mm x 0.18um

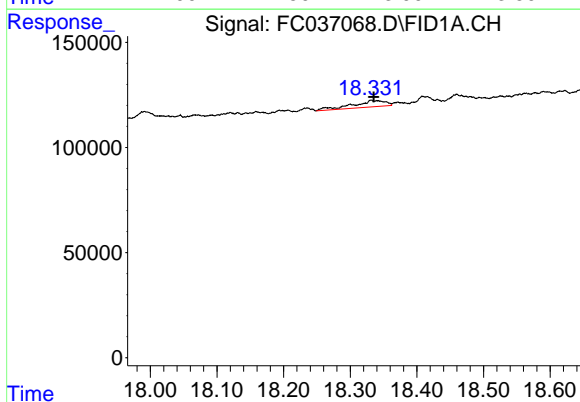




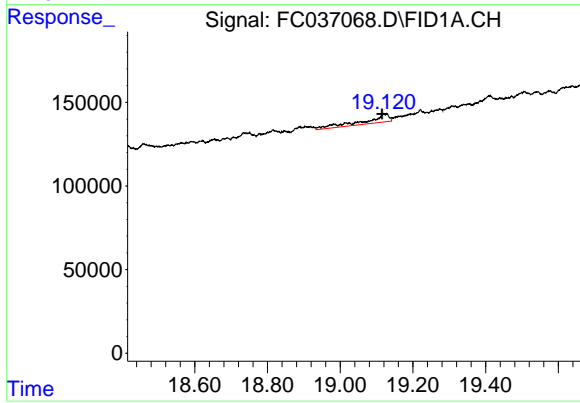
#9 ortho-Terphenyl (SURR)  
 R.T.: 0.000 min  
 Exp R.T. : 11.364 min  
 Response: 0  
 Conc: N.D.



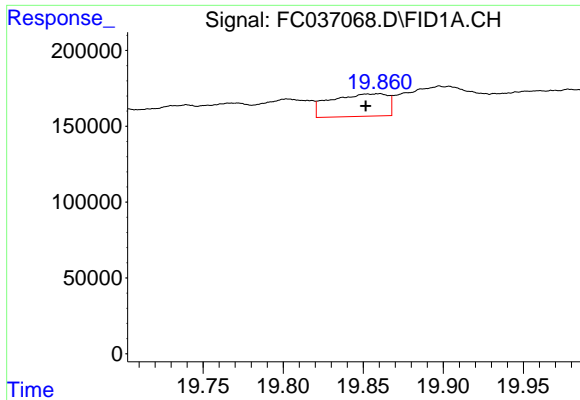
#12 1-chlorooctadecane (SURR)  
 R.T.: 0.000 min  
 Exp R.T. : 12.806 min  
 Response: 0  
 Conc: N.D.



#18 n-Dotriacontane (C32)  
 R.T.: 18.333 min  
 Delta R.T.: -0.003 min  
 Response: 103375  
 Conc: 1.29 ug/ml

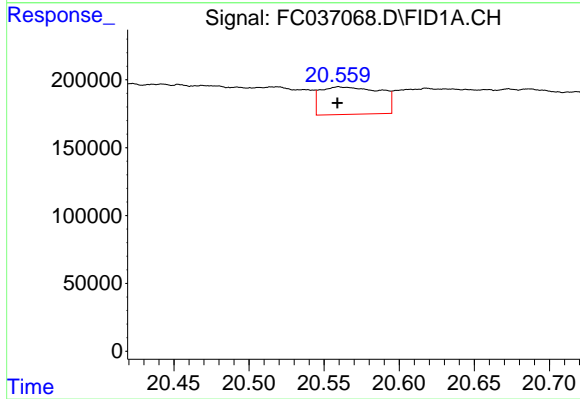


#19 n-Tetratriacontane (C34)  
 R.T.: 19.127 min  
 Delta R.T.: 0.012 min  
 Response: 233358  
 Conc: 3.26 ug/ml



#20 n-Hexatriacontane (C36)

R.T.: 19.858 min  
Delta R.T.: 0.006 min  
Response: 367686  
Conc: 5.37 ug/ml



#21 n-Octatriacontane (C38)

R.T.: 20.561 min  
Delta R.T.: 0.002 min  
Response: 560769  
Conc: 8.46 ug/ml