

Data Path : Z:\pestpcbsrv\HPCHEM1\FID_C\Data\FC102422AL\
 Data File : FC061888.D
 Signal(s) : FID1A.ch
 Acq On : 24 Oct 2022 17:18
 Operator : YP/AJ
 Sample : N5218-13
 Misc :
 ALS Vial : 14 Sample Multiplier: 1

Instrument :
 FID_C
 ClientSampleId :
 SP-2A

Integration File: autoint1.e
 Quant Time: Oct 25 04:42:39 2022
 Quant Method : Z:\pestpcbsrv\HPCHEM1\FID_C\Method\Aliphatic EPH 101722.M
 Quant Title : GC Extractables
 QLast Update : Mon Oct 17 23:26:31 2022
 Response via : Initial Calibration
 Integrator: ChemStation

Volume Inj. : 1 ul
 Signal Phase : Rxi-1ms
 Signal Info : 20M x 0.18mm x 0.18um

Compound	R.T.	Response	Conc Units

System Monitoring Compounds			
9) S ortho-Terphenyl (SURR)	11.586	3965407	26.677 ug/ml
Spiked Amount	50.000	Recovery	= 53.35%
12) S 1-chlorooctadecane (S...	13.023	3231428	27.737 ug/ml
Spiked Amount	50.000	Recovery	= 55.47%

Target Compounds

(f)=RT Delta > 1/2 Window

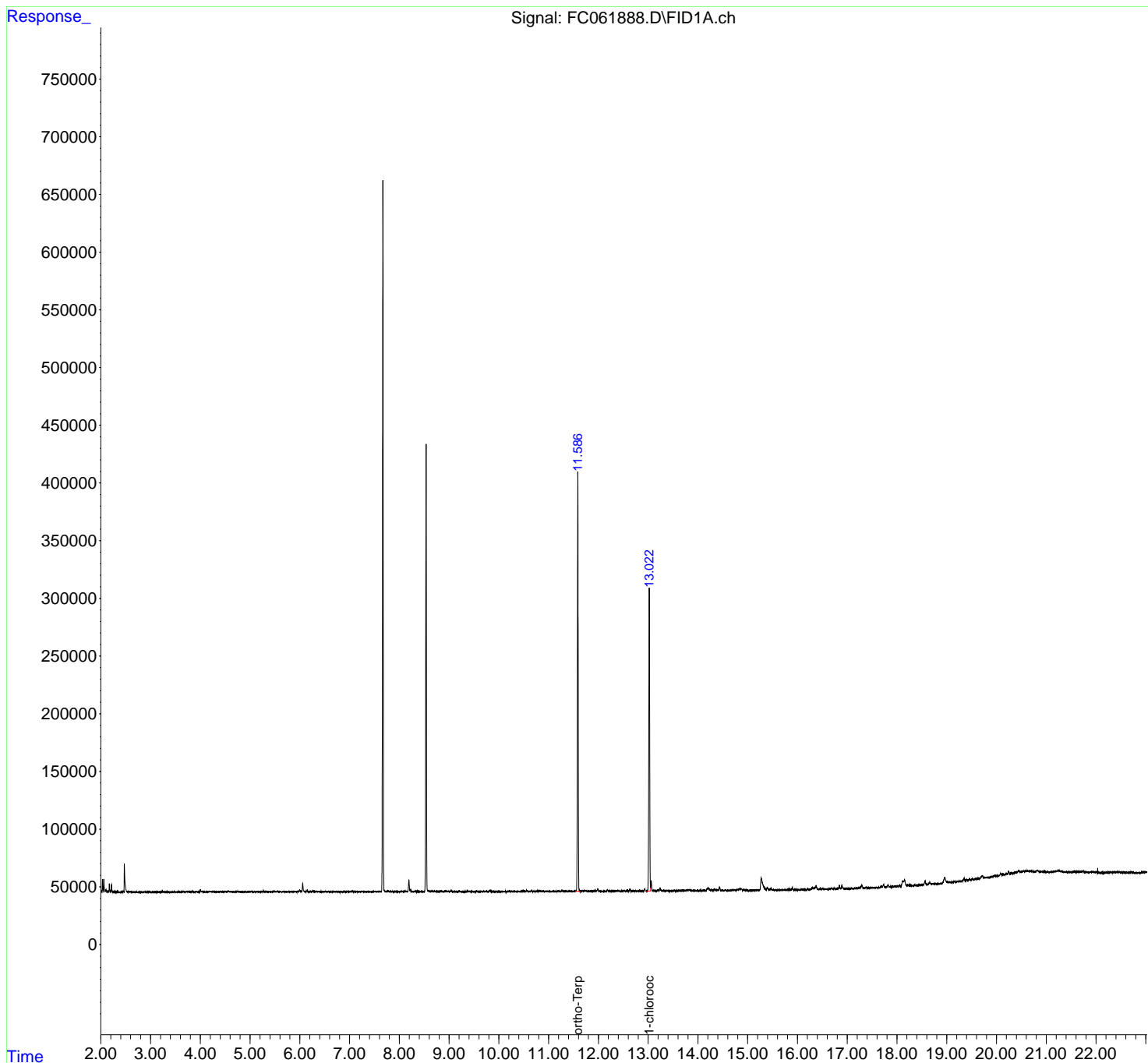
(m)=manual int.

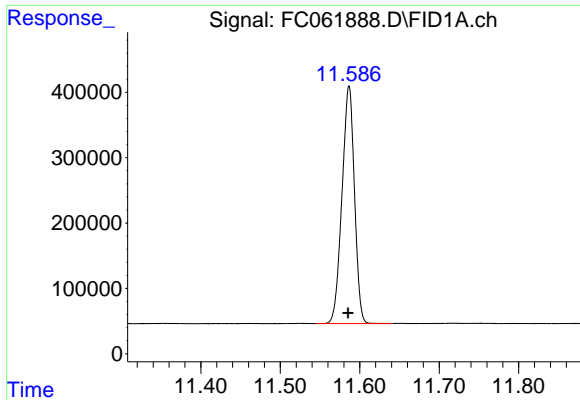
Data Path : Z:\pestpcbsrv\HPCHEM1\FID_C\Data\FC102422AL\
Data File : FC061888.D
Signal(s) : FID1A.ch
Acq On : 24 Oct 2022 17:18
Operator : YP/AJ
Sample : N5218-13
Misc :
ALS Vial : 14 Sample Multiplier: 1

Instrument :
FID_C
ClientSampleId :
SP-2A

Integration File: autoint1.e
Quant Time: Oct 25 04:42:39 2022
Quant Method : Z:\pestpcbsrv\HPCHEM1\FID_C\Method\Aliphatic EPH 101722.M
Quant Title : GC Extractables
QLast Update : Mon Oct 17 23:26:31 2022
Response via : Initial Calibration
Integrator: ChemStation

Volume Inj. : 1 ul
Signal Phase : Rxi-1ms
Signal Info : 20M x 0.18mm x 0.18um

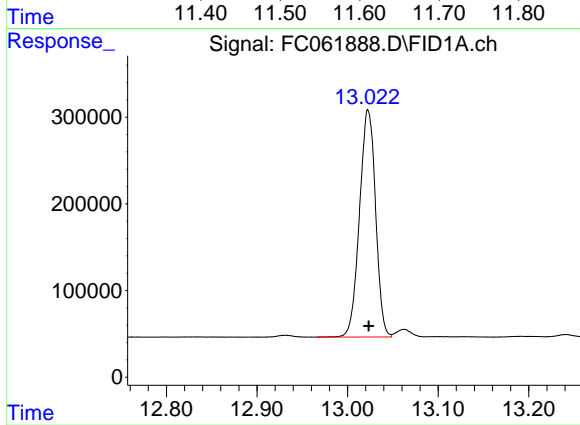




#9 ortho-Terphenyl (SURR)

R.T.: 11.586 min
 Delta R.T.: 0.001 min
 Response: 3965407
 Conc: 26.68 ug/ml

Instrument :
 FID_C
 ClientSampleId :
 SP-2A



#12 1-chlorooctadecane (SURR)

R.T.: 13.023 min
 Delta R.T.: 0.000 min
 Response: 3231428
 Conc: 27.74 ug/ml