

Data Path : Z:\pestpcbsrv\HPCHEM1\FID_C\Data\FC102521AL\
 Data File : FC056364.D
 Signal(s) : FID1A.CH
 Acq On : 25 Oct 2021 15:25
 Operator : AJ\MA
 Sample : M4316-06
 Misc :
 ALS Vial : 8 Sample Multiplier: 1

Integration File: autoint1.e
 Quant Time: Oct 26 01:15:30 2021
 Quant Method : Z:\pestpcbsrv\HPCHEM1\FID_C\Method\Aliphatic EPH 102121.M
 Quant Title : GC Extractables
 QLast Update : Thu Oct 21 01:00:25 2021
 Response via : Initial Calibration
 Integrator: ChemStation 6890 Scale Mode: Large solvent peaks clipped

Volume Inj. : 1 ul
 Signal Phase : Rxi-1ms
 Signal Info : 20M x 0.18mm x 0.18um

Compound	R.T.	Response	Conc Units

System Monitoring Compounds			
9) S ortho-Terphenyl (SURR)	11.624	3369422	27.213 ug/ml
Spiked Amount	50.000	Recovery	= 54.43%
12) S 1-chlorooctadecane (S...	13.054	2673010	27.779 ug/ml
Spiked Amount	50.000	Recovery	= 55.56%
Target Compounds			
3) T A~Naphthalene (C11.7)	6.090	424963	3.486 ug/ml

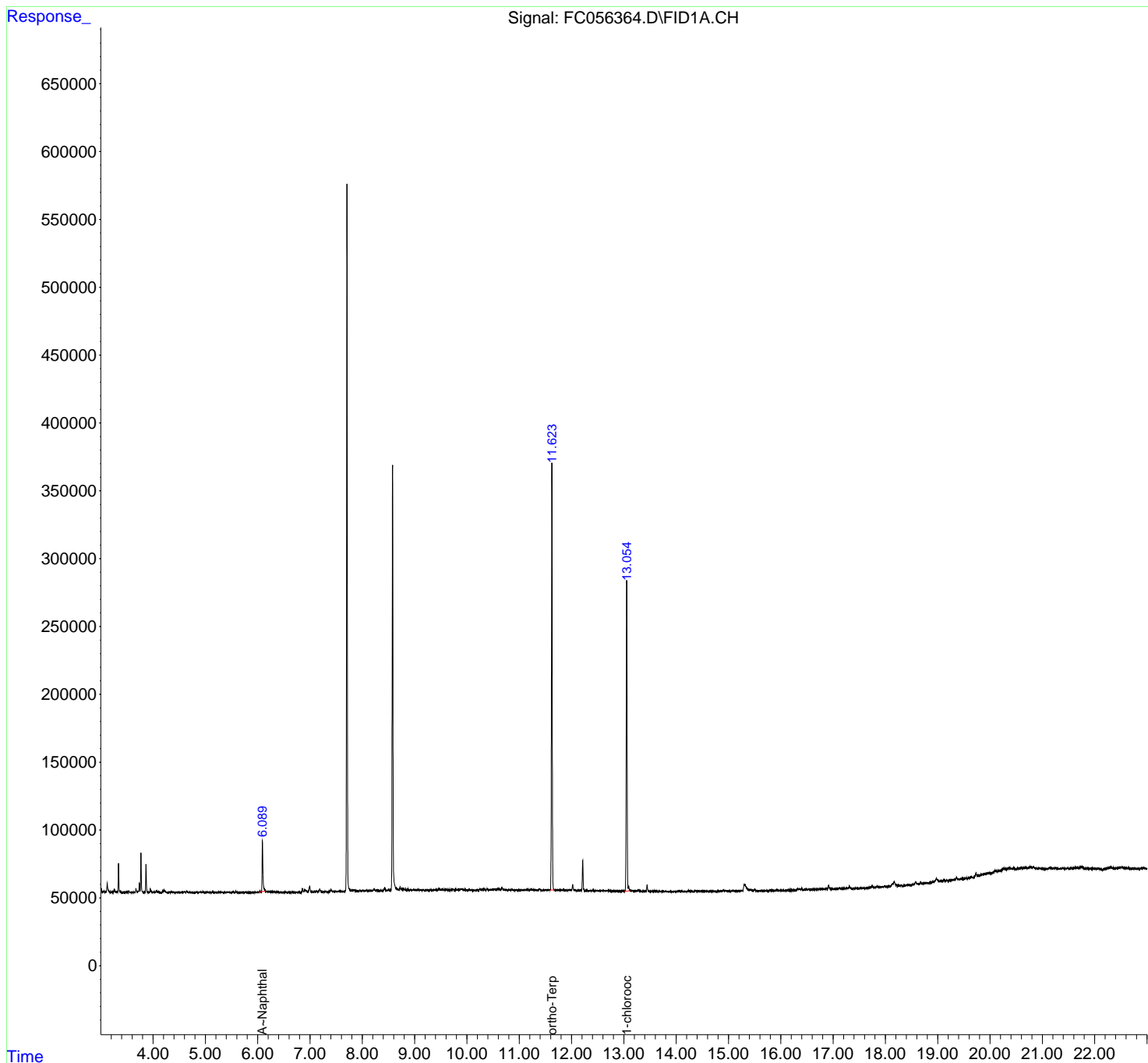
(f)=RT Delta > 1/2 Window

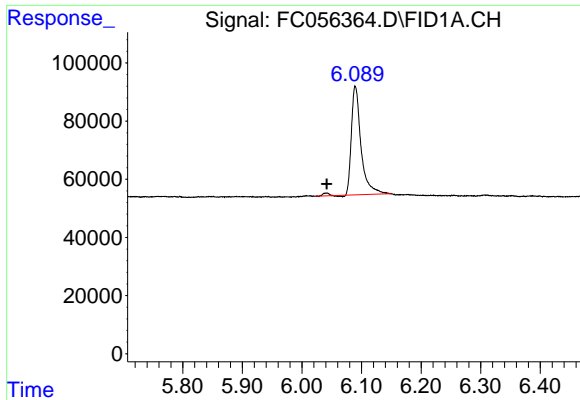
(m)=manual int.

Data Path : Z:\pestpcbsrv\HPCHEM1\FID_C\Data\FC102521AL\
 Data File : FC056364.D
 Signal(s) : FID1A.CH
 Acq On : 25 Oct 2021 15:25
 Operator : AJ\MA
 Sample : M4316-06
 Misc :
 ALS Vial : 8 Sample Multiplier: 1

Integration File: autoint1.e
 Quant Time: Oct 26 01:15:30 2021
 Quant Method : Z:\pestpcbsrv\HPCHEM1\FID_C\Method\Aliphatic EPH 102121.M
 Quant Title : GC Extractables
 QLast Update : Thu Oct 21 01:00:25 2021
 Response via : Initial Calibration
 Integrator: ChemStation 6890 Scale Mode: Large solvent peaks clipped

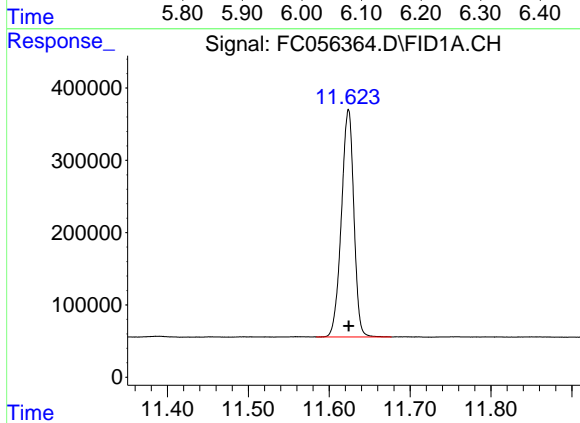
Volume Inj. : 1 ul
 Signal Phase : Rxi-1ms
 Signal Info : 20M x 0.18mm x 0.18um





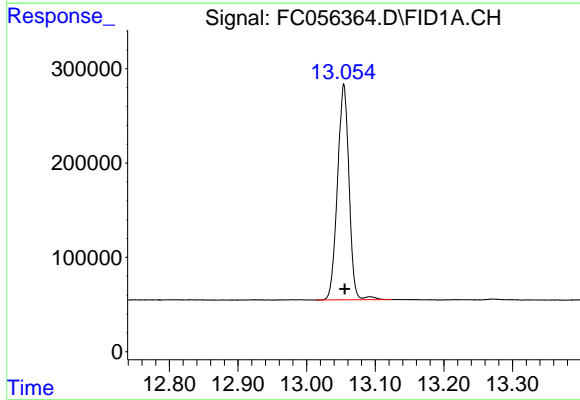
#3 A~Naphthalene (C11.7)

R.T.: 6.090 min
Delta R.T.: 0.048 min
Response: 424963
Conc: 3.49 ug/ml



#9 ortho-Terphenyl (SURR)

R.T.: 11.624 min
Delta R.T.: 0.000 min
Response: 3369422
Conc: 27.21 ug/ml



#12 1-chlorooctadecane (SURR)

R.T.: 13.054 min
Delta R.T.: -0.001 min
Response: 2673010
Conc: 27.78 ug/ml