

Data Path : Z:\pestpcbsrv\HPCHEM1\FID_C\Data\FC102522AL\
 Data File : FC061907.D
 Signal(s) : FID1A.ch
 Acq On : 25 Oct 2022 12:45
 Operator : YP/AJ
 Sample : N5253-07
 Misc :
 ALS Vial : 10 Sample Multiplier: 1

Instrument :
 FID_C
 ClientSampleId :
 124019

Integration File: autoint1.e
 Quant Time: Oct 26 03:14:59 2022
 Quant Method : Z:\pestpcbsrv\HPCHEM1\FID_C\Method\Aliphatic EPH 101722.M
 Quant Title : GC Extractables
 QLast Update : Mon Oct 17 23:26:31 2022
 Response via : Initial Calibration
 Integrator: ChemStation

Volume Inj. : 1 ul
 Signal Phase : Rxi-1ms
 Signal Info : 20M x 0.18mm x 0.18um

Compound	R.T.	Response	Conc Units

System Monitoring Compounds			
9) S ortho-Terphenyl (SURR)	11.585	4707755	31.672 ug/ml
Spiked Amount	50.000	Recovery	= 63.34%
12) S 1-chlorooctadecane (S...	13.022	3894131	33.426 ug/ml
Spiked Amount	50.000	Recovery	= 66.85%

Target Compounds

(f)=RT Delta > 1/2 Window

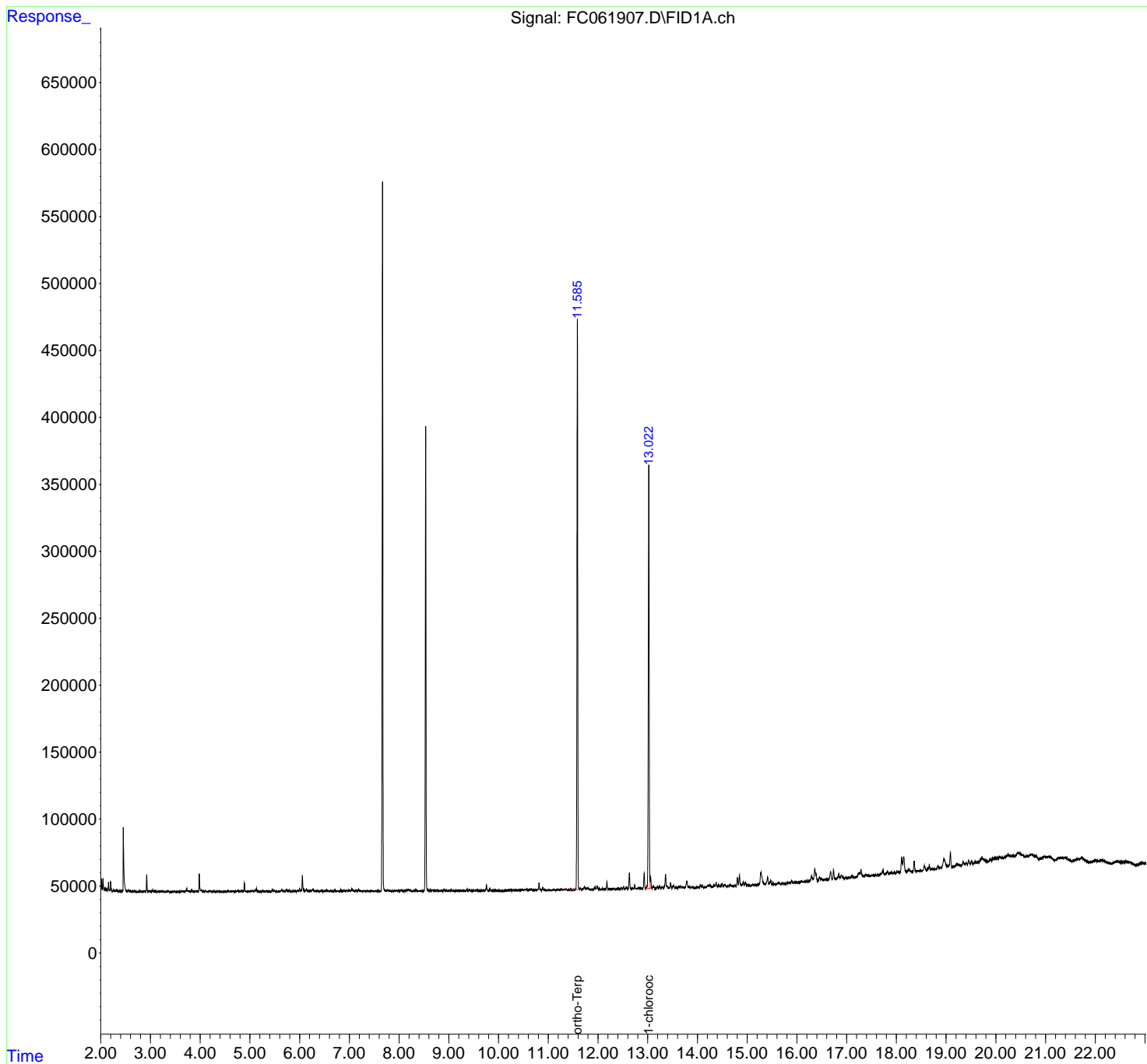
(m)=manual int.

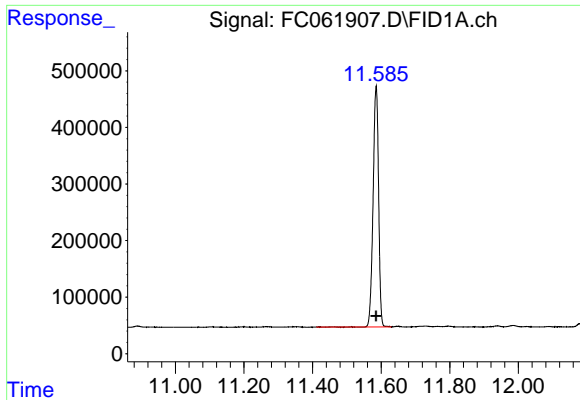
Data Path : Z:\pestpcbsrv\HPCHEM1\FID_C\Data\FC102522AL\
 Data File : FC061907.D
 Signal(s) : FID1A.ch
 Acq On : 25 Oct 2022 12:45
 Operator : YP/AJ
 Sample : N5253-07
 Misc :
 ALS Vial : 10 Sample Multiplier: 1

Instrument :
 FID_C
 ClientSampleId :
 124019

Integration File: autoint1.e
 Quant Time: Oct 26 03:14:59 2022
 Quant Method : Z:\pestpcbsrv\HPCHEM1\FID_C\Method\Aliphatic EPH 101722.M
 Quant Title : GC Extractables
 QLast Update : Mon Oct 17 23:26:31 2022
 Response via : Initial Calibration
 Integrator: ChemStation

Volume Inj. : 1 ul
 Signal Phase : Rxi-1ms
 Signal Info : 20M x 0.18mm x 0.18um

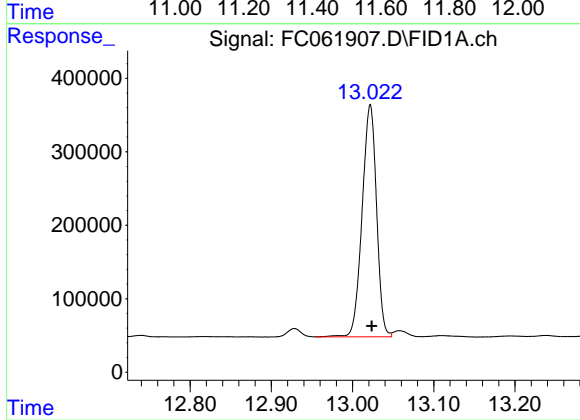




#9 ortho-Terphenyl (SURR)

R.T.: 11.585 min
 Delta R.T.: 0.000 min
 Response: 4707755
 Conc: 31.67 ug/ml

Instrument :
 FID_C
 ClientSampleId :
 124019



#12 1-chlorooctadecane (SURR)

R.T.: 13.022 min
 Delta R.T.: -0.002 min
 Response: 3894131
 Conc: 33.43 ug/ml