

Data Path : Z:\pestpcbsrv\HPCHEM1\FID_C\Data\FC102621AL\
 Data File : FC056419.D
 Signal(s) : FID1A.CH
 Acq On : 27 Oct 2021 5:55
 Operator : AJ\MA
 Sample : M4343-01
 Misc :
 ALS Vial : 20 Sample Multiplier: 1

Instrument :
 FID_C
 ClientSampleId :
 METRO-SP

Integration File: sample.E
 Quant Time: Oct 27 07:09:23 2021
 Quant Method : Z:\pestpcbsrv\HPCHEM1\FID_C\Method\Aliphatic EPH 102121.M
 Quant Title : GC Extractables
 QLast Update : Thu Oct 21 01:00:25 2021
 Response via : Initial Calibration
 Integrator: ChemStation 6890 Scale Mode: Large solvent peaks clipped

Volume Inj. : 1 ul
 Signal Phase : Rxi-1ms
 Signal Info : 20M x 0.18mm x 0.18um

Compound	R.T.	Response	Conc Units

System Monitoring Compounds			
9) S ortho-Terphenyl (SURR)	11.626	5475996	44.226 ug/ml
Spiked Amount	50.000	Recovery	= 88.45%
12) S 1-chlorooctadecane (S...	13.056	5053739	52.521 ug/ml
Spiked Amount	50.000	Recovery	= 105.04%

Target Compounds

(f)=RT Delta > 1/2 Window

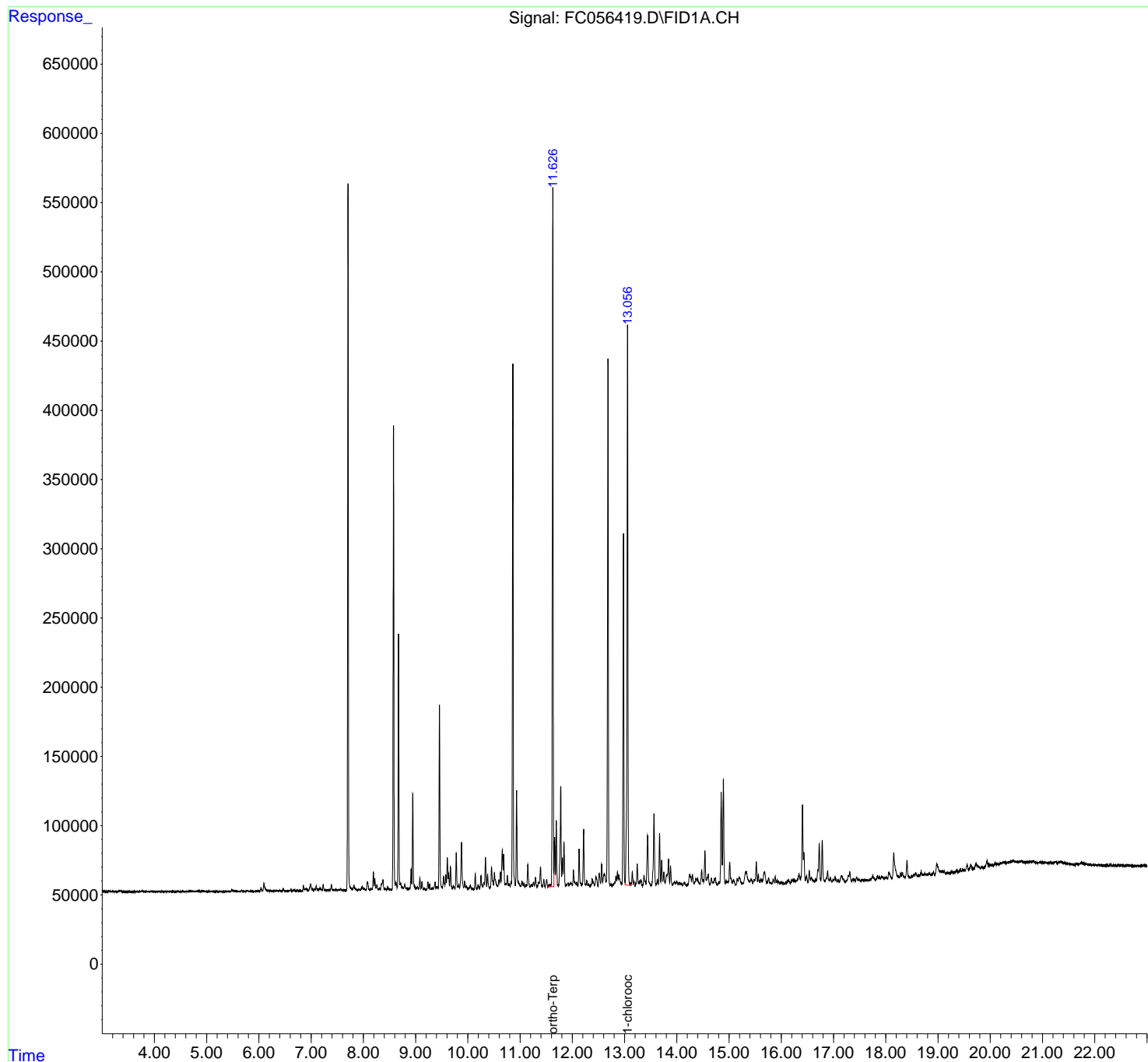
(m)=manual int.

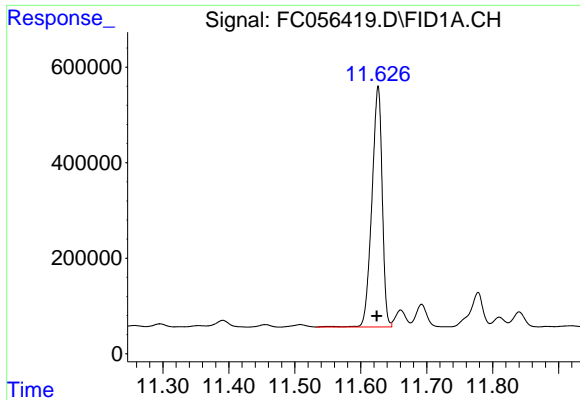
Data Path : Z:\pestpcbsrv\HPCHEM1\FID_C\Data\FC102621AL\
 Data File : FC056419.D
 Signal(s) : FID1A.CH
 Acq On : 27 Oct 2021 5:55
 Operator : AJ\MA
 Sample : M4343-01
 Misc :
 ALS Vial : 20 Sample Multiplier: 1

Instrument :
 FID_C
 ClientSampled :
 METRO-SP

Integration File: sample.E
 Quant Time: Oct 27 07:09:23 2021
 Quant Method : Z:\pestpcbsrv\HPCHEM1\FID_C\Method\Aliphatic EPH 102121.M
 Quant Title : GC Extractables
 QLast Update : Thu Oct 21 01:00:25 2021
 Response via : Initial Calibration
 Integrator: ChemStation 6890 Scale Mode: Large solvent peaks clipped

Volume Inj. : 1 ul
 Signal Phase : Rxi-1ms
 Signal Info : 20M x 0.18mm x 0.18um

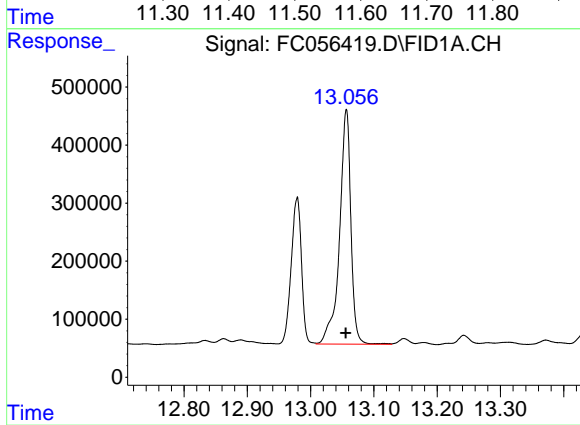




#9 ortho-Terphenyl (SURR)

R.T.: 11.626 min
Delta R.T.: 0.002 min
Response: 5475996
Conc: 44.23 ug/ml

Instrument :
FID_C
ClientSampleId :
METRO-SP



#12 1-chlorooctadecane (SURR)

R.T.: 13.056 min
Delta R.T.: 0.000 min
Response: 5053739
Conc: 52.52 ug/ml