

Data Path : Z:\pestpcbsrv\HPCHEM1\FID_C\Data\FC102824AL\
 Data File : FC067538.D
 Signal(s) : FID1A.ch
 Acq On : 28 Oct 2024 12:03
 Operator : YP/AJ
 Sample : P4495-16DL3 25X
 Misc :
 ALS Vial : 14 Sample Multiplier: 1

Instrument :
 FID_C
ClientSampleId :
 PT-NJEPH-SOILDL3

Integration File: sample.E
 Quant Time: Oct 29 00:05:02 2024
 Quant Method : Z:\pestpcbsrv\HPCHEM1\FID_C\Method\Aliphatic EPH 102324.M
 Quant Title : GC Extractables
 QLast Update : Wed Oct 23 18:12:58 2024
 Response via : Initial Calibration
 Integrator: ChemStation

Volume Inj. : 1 ul
 Signal Phase : Rxi-1ms
 Signal Info : 20M x 0.18mm x 0.18um

Compound	R.T.	Response	Conc Units

System Monitoring Compounds			
12) S 1-chlorooctadecane (S...	12.931	196940	1.824 ug/ml
Spiked Amount	50.000	Recovery =	3.65%

Target Compounds

(f)=RT Delta > 1/2 Window

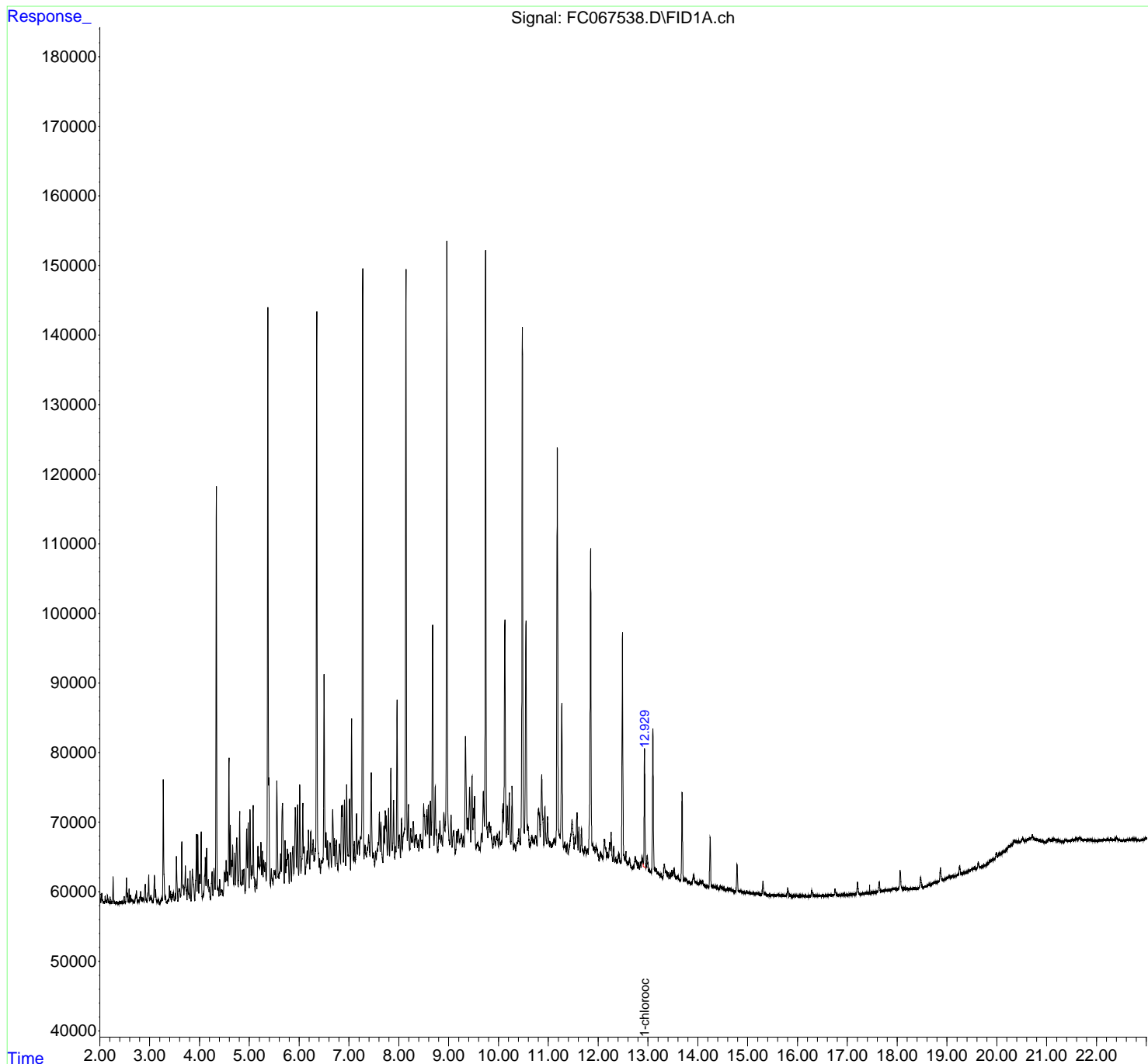
(m)=manual int.

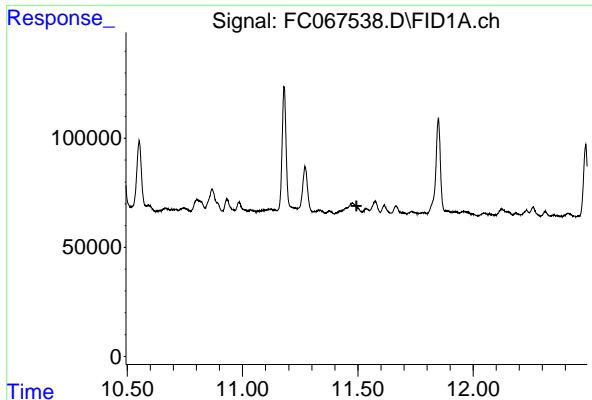
Data Path : Z:\pestpcbsrv\HPCHEM1\FID_C\Data\FC102824AL\
 Data File : FC067538.D
 Signal(s) : FID1A.ch
 Acq On : 28 Oct 2024 12:03
 Operator : YP/AJ
 Sample : P4495-16DL3 25X
 Misc :
 ALS Vial : 14 Sample Multiplier: 1

Instrument :
 FID_C
 ClientSampleId :
 PT-NJEPH-SOILDL3

Integration File: sample.E
 Quant Time: Oct 29 00:05:02 2024
 Quant Method : Z:\pestpcbsrv\HPCHEM1\FID_C\Method\Aliphatic EPH 102324.M
 Quant Title : GC Extractables
 QLast Update : Wed Oct 23 18:12:58 2024
 Response via : Initial Calibration
 Integrator: ChemStation

Volume Inj. : 1 ul
 Signal Phase : Rxi-1ms
 Signal Info : 20M x 0.18mm x 0.18um

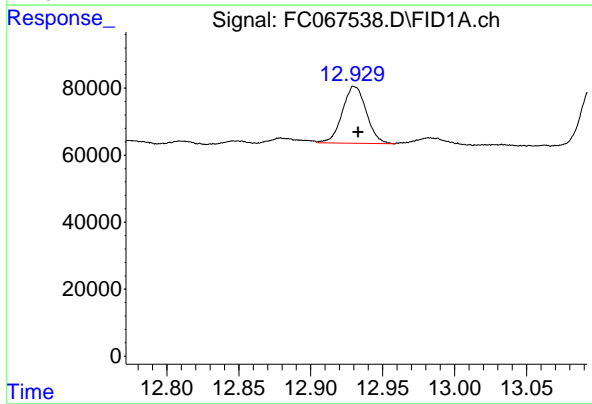




#9 ortho-Terphenyl (SURRE)

R.T.: 0.000 min
 Exp R.T.: 11.494 min
 Response: 0
 Conc: N.D.

Instrument :
 FID_C
 ClientSampleId :
 PT-NJEPH-SOILD3



#12 1-chlorooctadecane (SURRE)

R.T.: 12.931 min
 Delta R.T.: -0.002 min
 Response: 196940
 Conc: 1.82 ug/ml