

Data Path : Z:\pestpcbsrv\HPCHEM1\FID_C\Data\FC102920AL\
 Data File : FC050451.D
 Signal(s) : FID1A.CH
 Acq On : 30 Oct 2020 7:10
 Operator : DD\AJ
 Sample : L4540-03
 Misc :
 ALS Vial : 26 Sample Multiplier: 1

Instrument :
 FID_C
 ClientSampleId :
 341-EPH-2

Integration File: autoint1.e
 Quant Time: Oct 30 07:39:41 2020
 Quant Method : Z:\pestpcbsrv\HPCHEM1\FID_C\Method\Alaphatic EPH 100620.M
 Quant Title : GC Extractables
 QLast Update : Wed Oct 07 04:53:04 2020
 Response via : Initial Calibration
 Integrator: ChemStation 6890 Scale Mode: Large solvent peaks clipped

Volume Inj. : 1 ul
 Signal Phase : Rxi-1ms
 Signal Info : 20M x 0.18mm x 0.18um

Compound	R.T.	Response	Conc Units

System Monitoring Compounds			
12) S 1-chlorooctadecane (S...	13.057	1560788	18.018 ug/ml
Spiked Amount	50.000	Recovery =	36.04%

Target Compounds

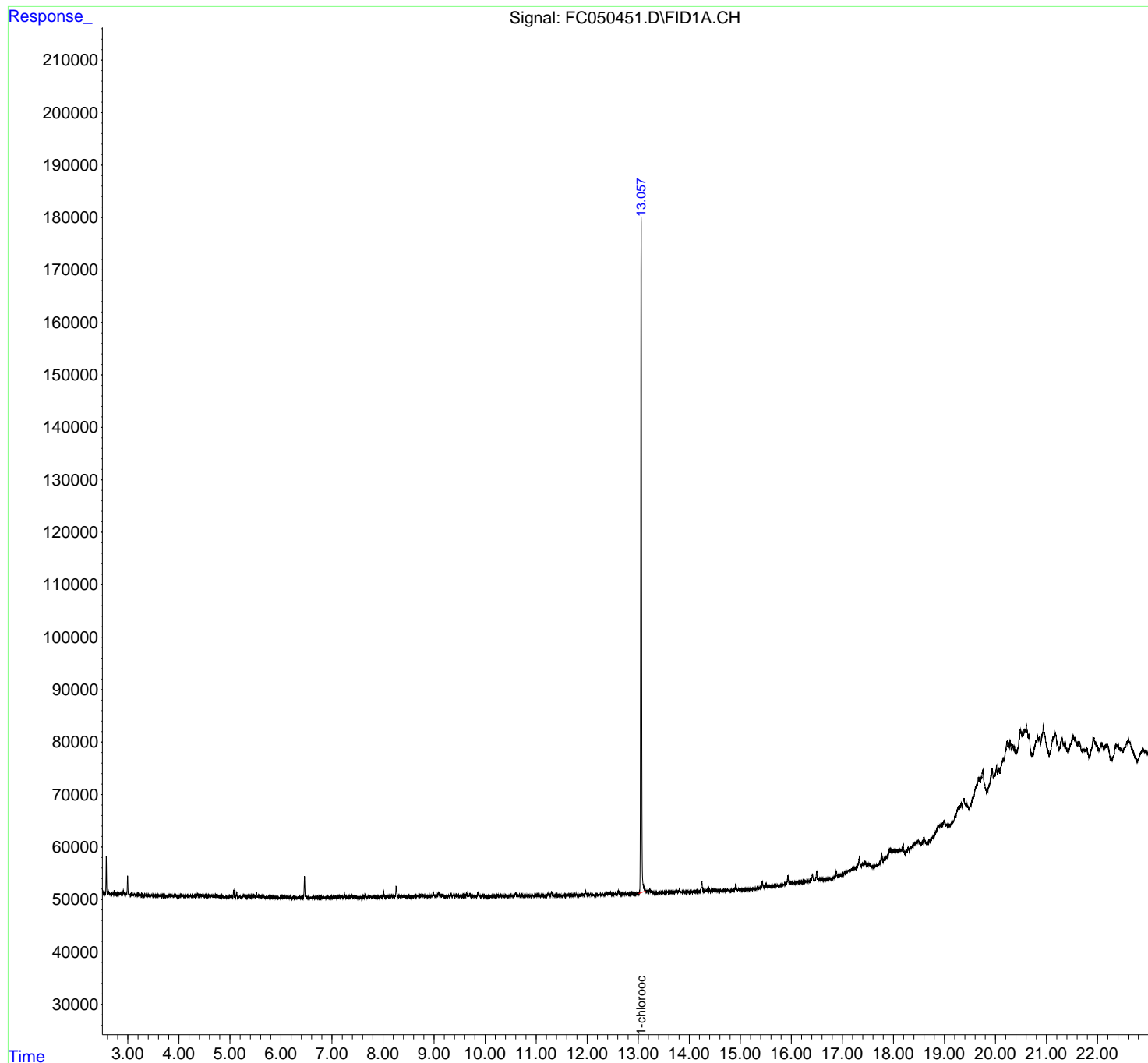
(f)=RT Delta > 1/2 Window (m)=manual int.

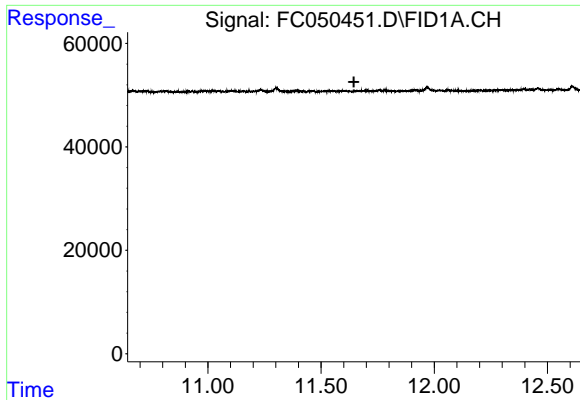
Data Path : Z:\pestpcbsrv\HPCHEM1\FID_C\Data\FC102920AL\
Data File : FC050451.D
Signal(s) : FID1A.CH
Acq On : 30 Oct 2020 7:10
Operator : DD\AJ
Sample : L4540-03
Misc :
ALS Vial : 26 Sample Multiplier: 1

Instrument :
FID_C
ClientSampleId :
341-EPH-2

Integration File: autoint1.e
Quant Time: Oct 30 07:39:41 2020
Quant Method : Z:\pestpcbsrv\HPCHEM1\FID_C\Method\Aliphatic EPH 100620.M
Quant Title : GC Extractables
QLast Update : Wed Oct 07 04:53:04 2020
Response via : Initial Calibration
Integrator: ChemStation 6890 Scale Mode: Large solvent peaks clipped

Volume Inj. : 1 ul
Signal Phase : Rxi-1ms
Signal Info : 20M x 0.18mm x 0.18um

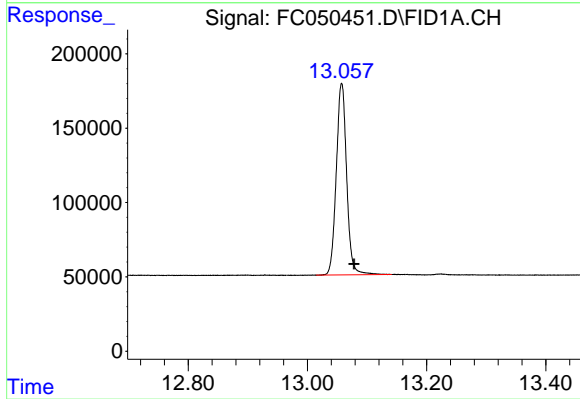




#9 ortho-Terphenyl (SURR)

R.T.: 0.000 min
Exp R.T.: 11.645 min
Response: 0
Conc: N.D.

Instrument :
FID_C
ClientSampled :
341-EPH-2



#12 1-chlorooctadecane (SURR)

R.T.: 13.057 min
Delta R.T.: -0.021 min
Response: 1560788
Conc: 18.02 ug/ml