

Data Path : Z:\pestpcbsrv\HPCHEM1\FID_C\Data\FC102921AL\
 Data File : FC056501.D
 Signal(s) : FID1A.CH
 Acq On : 29 Oct 2021 14:39
 Operator : AJ\MA
 Sample : M4358-07DL 2X
 Misc :
 ALS Vial : 7 Sample Multiplier: 1

Instrument :
 FID_C
 ClientSampleId :

Integration File: autoint1.e
 Quant Time: Oct 30 00:17:27 2021
 Quant Method : Z:\pestpcbsrv\HPCHEM1\FID_C\Method\Aliphatic EPH 102121.M
 Quant Title : GC Extractables
 QLast Update : Thu Oct 21 01:00:25 2021
 Response via : Initial Calibration
 Integrator: ChemStation 6890 Scale Mode: Large solvent peaks clipped

Volume Inj. : 1 ul
 Signal Phase : Rxi-1ms
 Signal Info : 20M x 0.18mm x 0.18um

Compound	R.T.	Response	Conc Units

System Monitoring Compounds			
9) S ortho-Terphenyl (SURR)	11.622	1848596	14.930 ug/ml
Spiked Amount	50.000	Recovery	= 29.86%
12) S 1-chlorooctadecane (S...	13.053	1476425	15.344 ug/ml
Spiked Amount	50.000	Recovery	= 30.69%
Target Compounds			
10) T n-Eicosane (C20)	12.561	224960	1.957 ug/ml
13) T n-Docosane (C22)	13.842	198472	1.763 ug/ml
14) T n-Tetracosane (C24)	14.894	297955	2.704 ug/ml

(f)=RT Delta > 1/2 Window

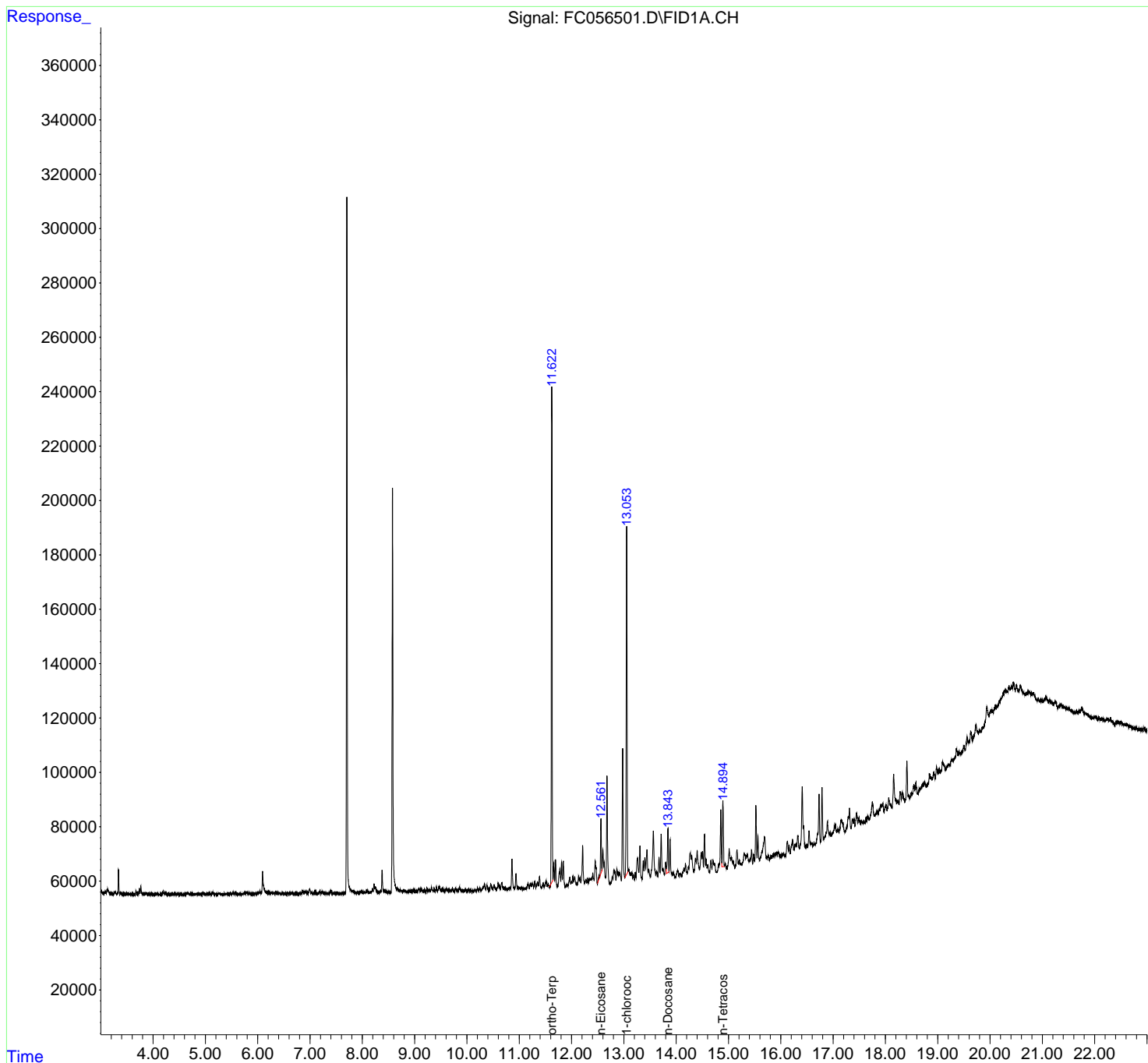
(m)=manual int.

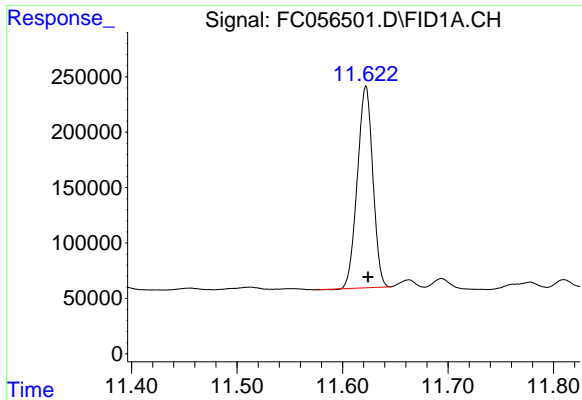
Data Path : Z:\pestpcbsrv\HPCHEM1\FID_C\Data\FC102921AL\
 Data File : FC056501.D
 Signal(s) : FID1A.CH
 Acq On : 29 Oct 2021 14:39
 Operator : AJ\MA
 Sample : M4358-07DL 2X
 Misc :
 ALS Vial : 7 Sample Multiplier: 1

Instrument :
 FID_C
 ClientSampleId :

Integration File: autoint1.e
 Quant Time: Oct 30 00:17:27 2021
 Quant Method : Z:\pestpcbsrv\HPCHEM1\FID_C\Method\Aliphatic EPH 102121.M
 Quant Title : GC Extractables
 QLast Update : Thu Oct 21 01:00:25 2021
 Response via : Initial Calibration
 Integrator: ChemStation 6890 Scale Mode: Large solvent peaks clipped

Volume Inj. : 1 ul
 Signal Phase : Rxi-1ms
 Signal Info : 20M x 0.18mm x 0.18um

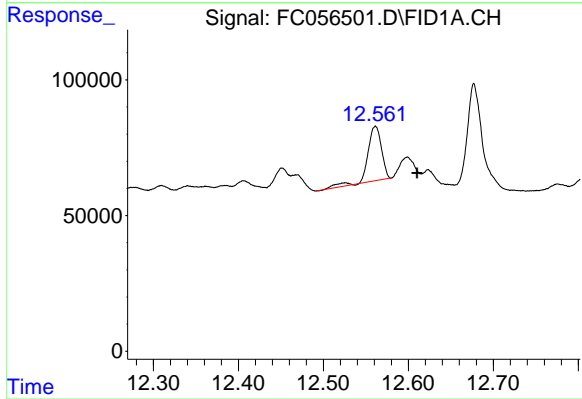




#9 ortho-Terphenyl (SURR)

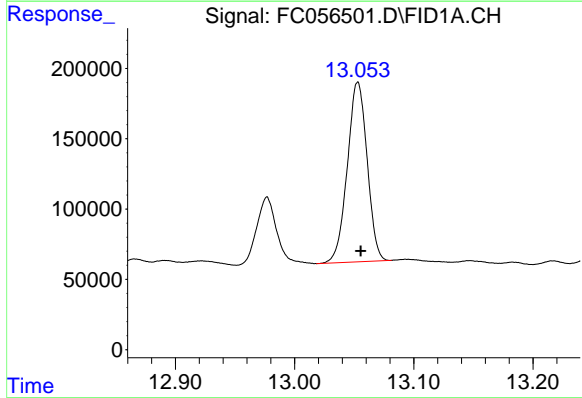
R.T.: 11.622 min
 Delta R.T.: -0.002 min
 Response: 1848596
 Conc: 14.93 ug/ml

Instrument :
 FID_C
 ClientSampleId :



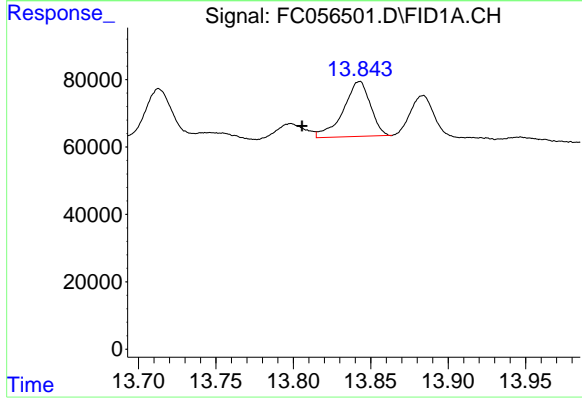
#10 n-Eicosane (C20)

R.T.: 12.561 min
 Delta R.T.: -0.049 min
 Response: 224960
 Conc: 1.96 ug/ml



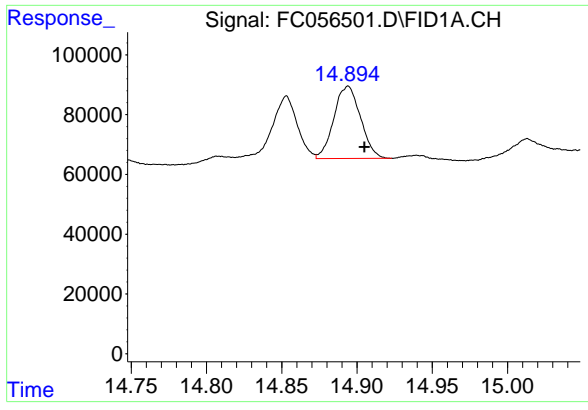
#12 1-chlorooctadecane (SURR)

R.T.: 13.053 min
 Delta R.T.: -0.002 min
 Response: 1476425
 Conc: 15.34 ug/ml



#13 n-Docosane (C22)

R.T.: 13.842 min
 Delta R.T.: 0.037 min
 Response: 198472
 Conc: 1.76 ug/ml



#14 n-Tetracosane (C24)

R.T.: 14.894 min
Delta R.T.: -0.011 min
Response: 297955
Conc: 2.70 ug/ml

Instrument :
FID_C
ClientSampleId :