

Data Path : Z:\pestpcbsrv\HPCHEM1\FID\_C\Data\FC103019AL\  
 Data File : FC044262.D  
 Signal(s) : FID1A.CH  
 Acq On : 30 Oct 2019 15:35  
 Operator : DD\AJ  
 Sample : PB124407BS  
 Misc :  
 ALS Vial : 4 Sample Multiplier: 1

Integration File: autoint1.e  
 Quant Time: Oct 31 01:55:44 2019  
 Quant Method : Z:\pestpcbsrv\HPCHEM1\FID\_C\Method\Alaphatic EPH 102219.M  
 Quant Title : GC Extractables  
 QLast Update : Tue Oct 22 12:36:58 2019  
 Response via : Initial Calibration  
 Integrator: ChemStation 6890 Scale Mode: Large solvent peaks clipped

Volume Inj. : 1 ul  
 Signal Phase : Rxi-1ms  
 Signal Info : 20M x 0.18mm x 0.18um

Compound	R.T.	Response	Conc Units
System Monitoring Compounds			
9) S ortho-Terphenyl (SURR)	11.732	5629186	38.619 ug/ml
Spiked Amount	50.000	Recovery =	77.24%
12) S 1-chlorooctadecane (S...)	13.164	4714956	42.168 ug/ml
Spiked Amount	50.000	Recovery =	84.34%
Target Compounds			
1) T n-Nonane (C9)	3.462	4953369	44.967 ug/ml
2) T n-Decane (C10)	4.533	5358053	48.240 ug/ml
3) T A-Naphthalene (C11.7)	6.131	6481833	52.096 ug/ml
4) T n-Dodecane (C12)	6.556	5731336	50.961 ug/ml
5) T A~2-methylnaphthalene...	7.192	6545586	51.907 ug/ml
6) T n-Tetradecane (C14)	8.357	5926641	52.385 ug/ml
7) T n-Hexadecane (C16)	9.959	5930461	51.902 ug/ml
8) T n-Octadecane (C18)	11.405	5784273	50.521 ug/ml
10) T n-Eicosane (C20)	12.717	5649124	49.533 ug/ml
11) T n-Heneicosane (C21)	13.330	5563122	48.501 ug/ml
13) T n-Docosane (C22)	13.918	5454223	48.031 ug/ml
14) T n-Tetracosane (C24)	15.024	10638089	94.074 ug/ml
15) T n-Hexacosane (C26)	16.046	4986068	45.066 ug/ml
16) T n-Octacosane (C28)	16.994	4865830	44.918 ug/ml
17) T n-Tricontane (C30)	17.886	4808705	45.436 ug/ml
18) T n-Dotriacontane (C32)	18.718	4654215	46.213 ug/ml
19) T n-Tetratriacontane (C34)	19.503	4246644	45.290 ug/ml
20) T n-Hexatriacontane (C36)	20.243	3462224	39.883 ug/ml
21) T n-Octatriacontane (C38)	21.017	2970963	36.842 ug/ml
22) T n-Tetracontane (C40)	21.994	2919823	34.543 ug/ml

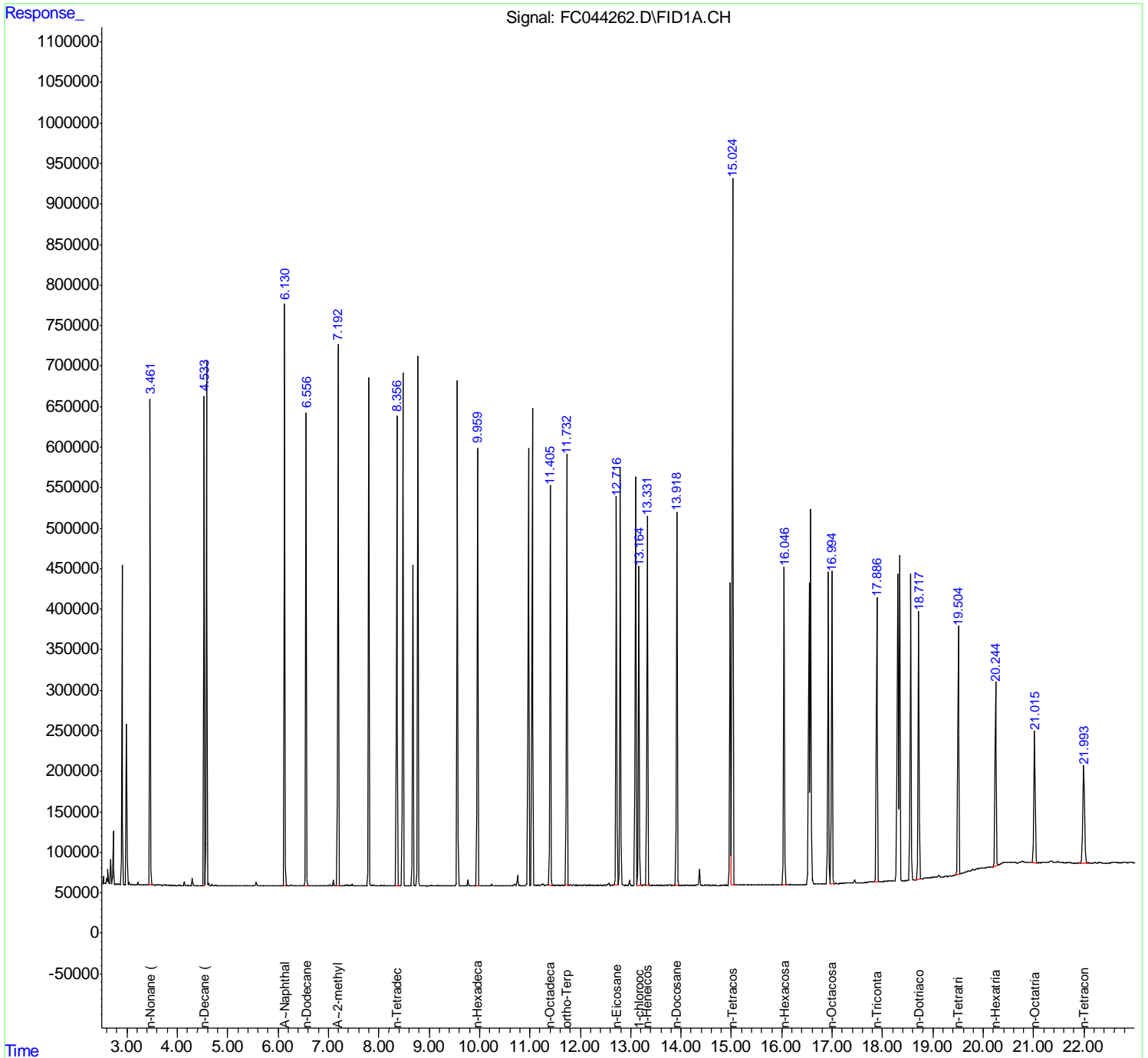
(f)=RT Delta > 1/2 Window

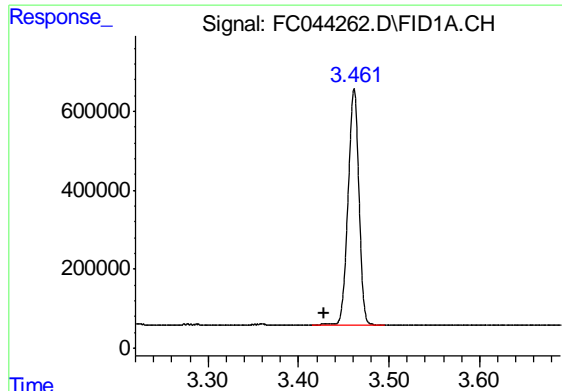
(m)=manual int.

Data Path : Z:\pestpcbsrv\HPCHEM1\FID\_C\Data\FC103019AL\  
 Data File : FC044262.D  
 Signal(s) : FID1A.CH  
 Acq On : 30 Oct 2019 15:35  
 Operator : DD\AJ  
 Sample : PB124407BS  
 Misc :  
 ALS Vial : 4 Sample Multiplier: 1

Integration File: autoint1.e  
 Quant Time: Oct 31 01:55:44 2019  
 Quant Method : Z:\pestpcbsrv\HPCHEM1\FID\_C\Method\Aliphatic EPH 102219.M  
 Quant Title : GC Extractables  
 QLast Update : Tue Oct 22 12:36:58 2019  
 Response via : Initial Calibration  
 Integrator: ChemStation 6890 Scale Mode: Large solvent peaks clipped

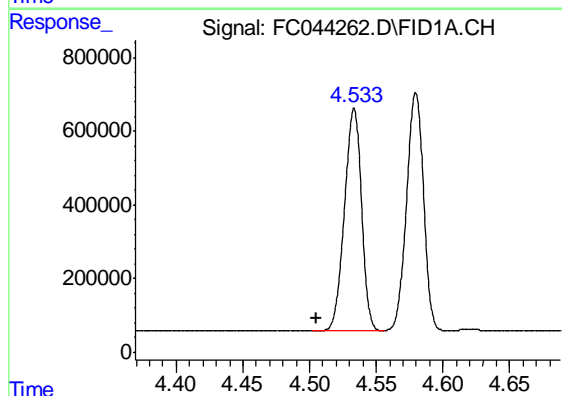
Volume Inj. : 1 ul  
 Signal Phase : Rxi-1ms  
 Signal Info : 20M x 0.18mm x 0.18um





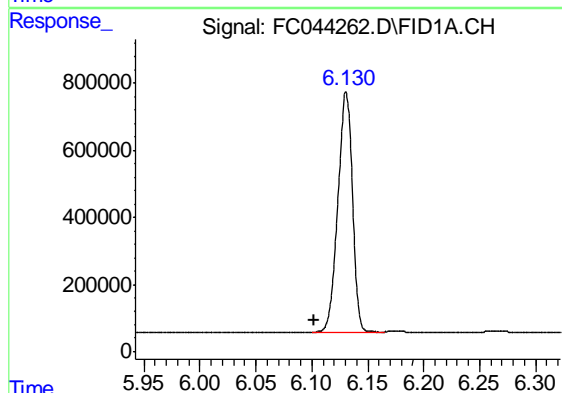
#1 n-Nonane (C9)

R.T.: 3.462 min  
Delta R.T.: 0.033 min  
Response: 4953369  
Conc: 44.97 ug/ml



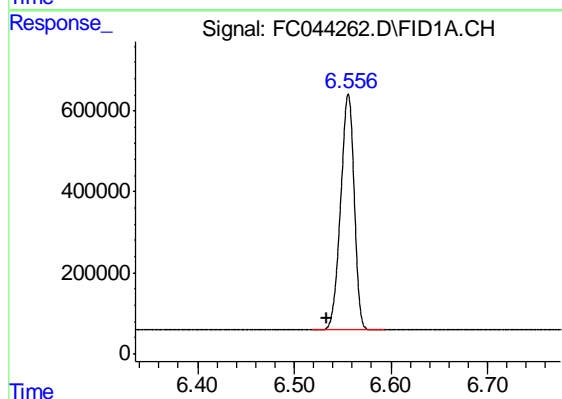
#2 n-Decane (C10)

R.T.: 4.533 min  
Delta R.T.: 0.028 min  
Response: 5358053  
Conc: 48.24 ug/ml



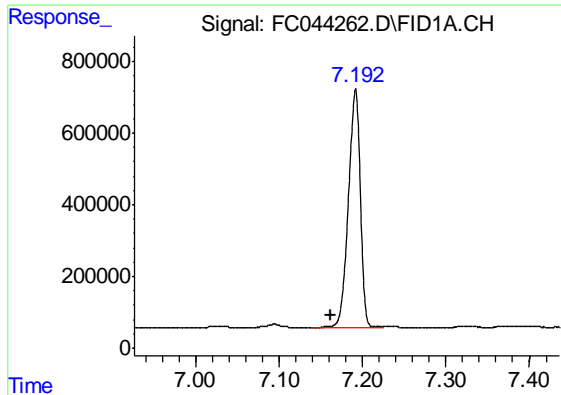
#3 A-Naphthalene (C11.7)

R.T.: 6.131 min  
Delta R.T.: 0.028 min  
Response: 6481833  
Conc: 52.10 ug/ml



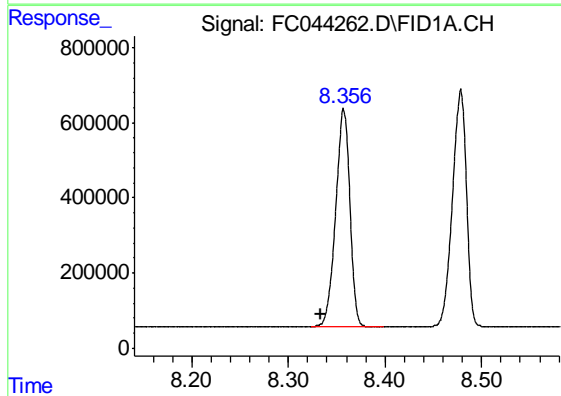
#4 n-Dodecane (C12)

R.T.: 6.556 min  
Delta R.T.: 0.023 min  
Response: 5731336  
Conc: 50.96 ug/ml



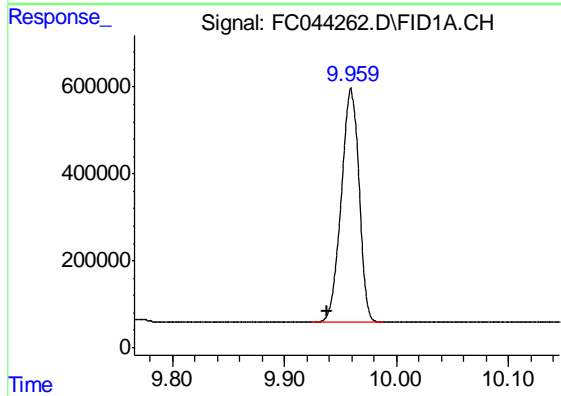
#5 A~2-methylnaphthalene (C12.89)

R.T.: 7.192 min  
Delta R.T.: 0.029 min  
Response: 6545586  
Conc: 51.91 ug/ml



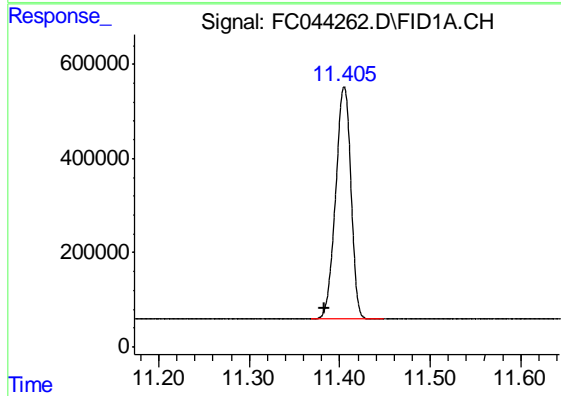
#6 n-Tetradecane (C14)

R.T.: 8.357 min  
Delta R.T.: 0.024 min  
Response: 5926641  
Conc: 52.39 ug/ml



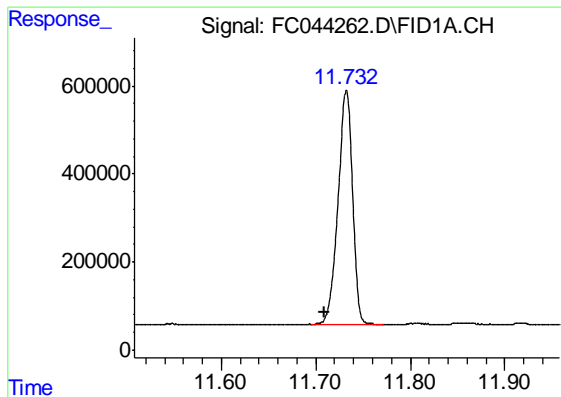
#7 n-Hexadecane (C16)

R.T.: 9.959 min  
Delta R.T.: 0.021 min  
Response: 5930461  
Conc: 51.90 ug/ml



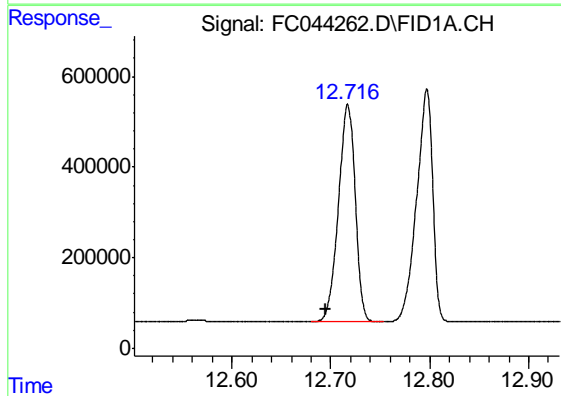
#8 n-Octadecane (C18)

R.T.: 11.405 min  
Delta R.T.: 0.022 min  
Response: 5784273  
Conc: 50.52 ug/ml



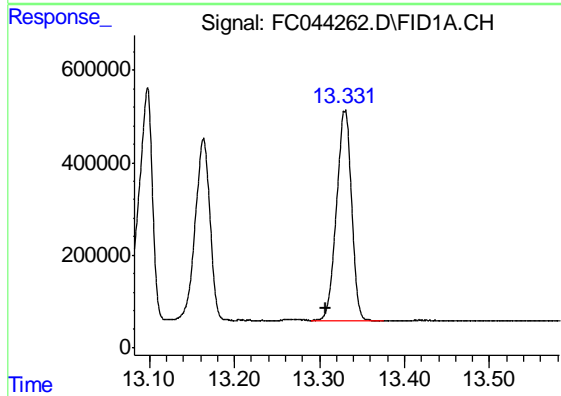
#9 ortho-Terphenyl (SURR)

R.T.: 11.732 min  
Delta R.T.: 0.024 min  
Response: 5629186  
Conc: 38.62 ug/ml



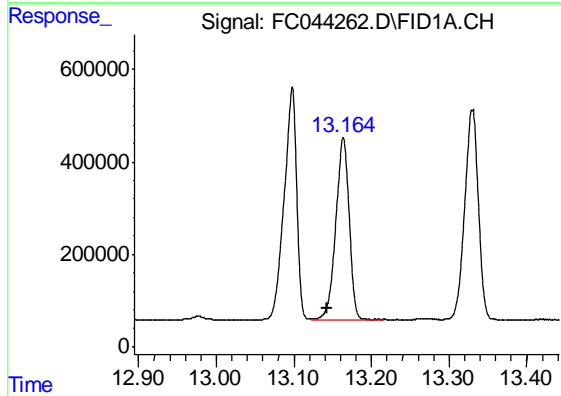
#10 n-Eicosane (C20)

R.T.: 12.717 min  
Delta R.T.: 0.023 min  
Response: 5649124  
Conc: 49.53 ug/ml



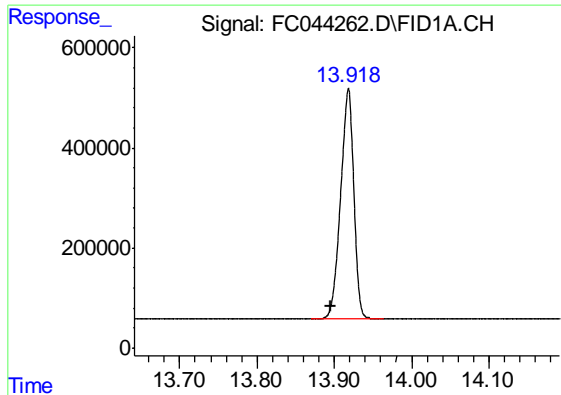
#11 n-Heneicosane (C21)

R.T.: 13.330 min  
Delta R.T.: 0.022 min  
Response: 5563122  
Conc: 48.50 ug/ml



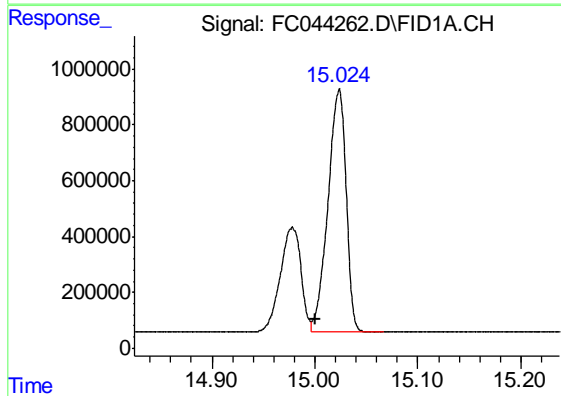
#12 1-chlorooctadecane (SURR)

R.T.: 13.164 min  
Delta R.T.: 0.021 min  
Response: 4714956  
Conc: 42.17 ug/ml



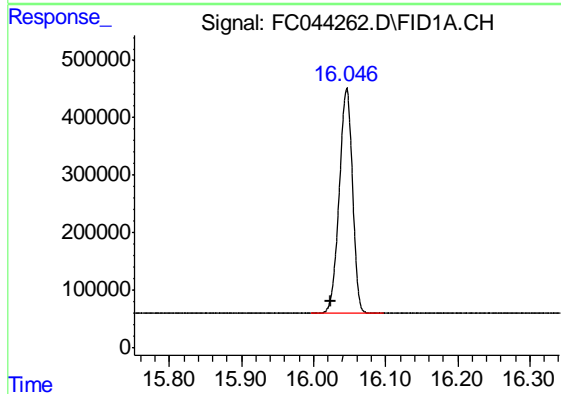
#13 n-Docosane (C22)

R.T.: 13.918 min  
Delta R.T.: 0.023 min  
Response: 5454223  
Conc: 48.03 ug/ml



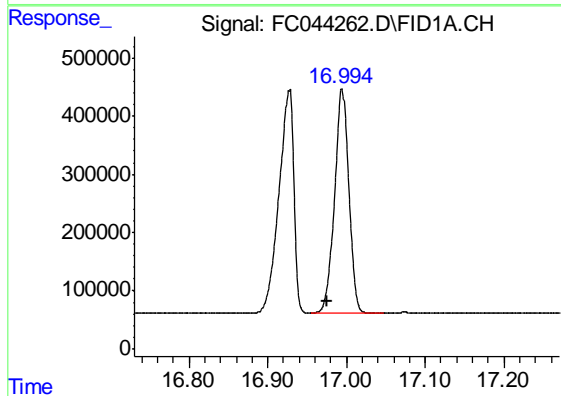
#14 n-Tetracosane (C24)

R.T.: 15.024 min  
Delta R.T.: 0.023 min  
Response: 10638089  
Conc: 94.07 ug/ml



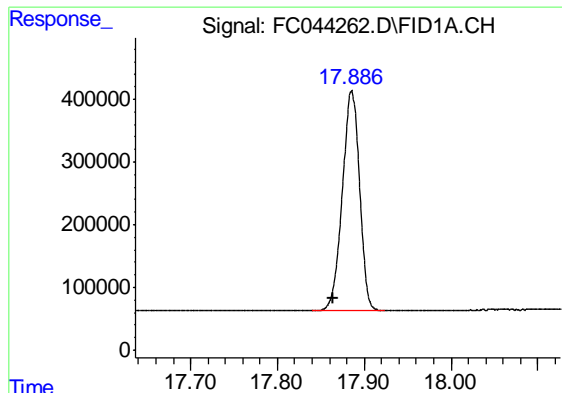
#15 n-Hexacosane (C26)

R.T.: 16.046 min  
Delta R.T.: 0.023 min  
Response: 4986068  
Conc: 45.07 ug/ml



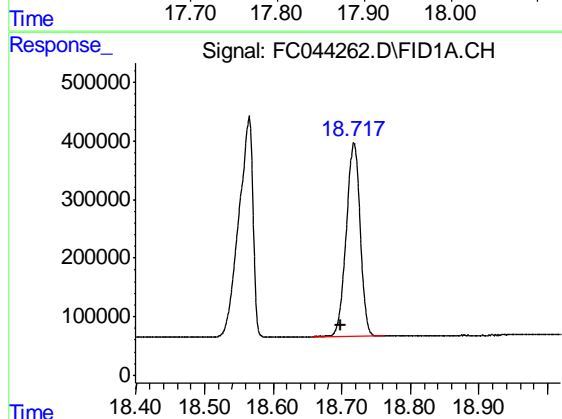
#16 n-Octacosane (C28)

R.T.: 16.994 min  
Delta R.T.: 0.020 min  
Response: 4865830  
Conc: 44.92 ug/ml



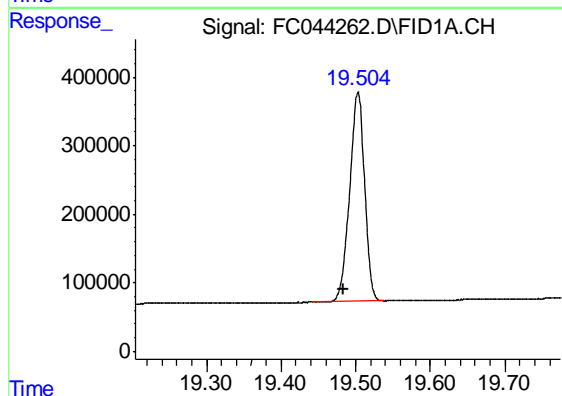
#17 n-Tricontane (C30)

R.T.: 17.886 min  
Delta R.T.: 0.021 min  
Response: 4808705  
Conc: 45.44 ug/ml



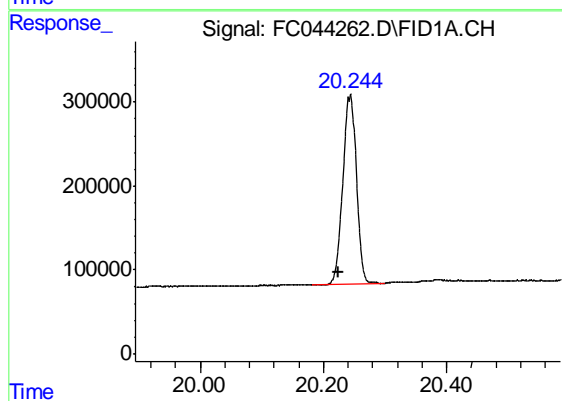
#18 n-Dotriacontane (C32)

R.T.: 18.718 min  
Delta R.T.: 0.019 min  
Response: 4654215  
Conc: 46.21 ug/ml



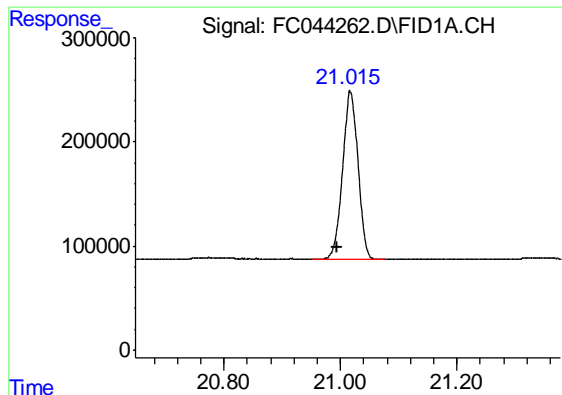
#19 n-Tetracontane (C34)

R.T.: 19.503 min  
Delta R.T.: 0.020 min  
Response: 4246644  
Conc: 45.29 ug/ml



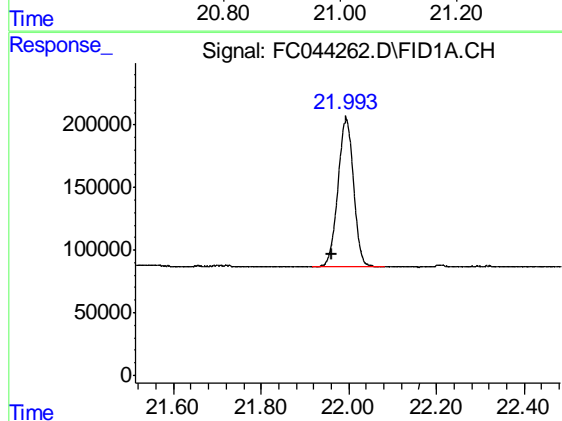
#20 n-Hexatriacontane (C36)

R.T.: 20.243 min  
Delta R.T.: 0.020 min  
Response: 3462224  
Conc: 39.88 ug/ml



#21 n-Octatriacontane (C38)

R.T.: 21.017 min  
Delta R.T.: 0.023 min  
Response: 2970963  
Conc: 36.84 ug/ml



#22 n-Tetracontane (C40)

R.T.: 21.994 min  
Delta R.T.: 0.033 min  
Response: 2919823  
Conc: 34.54 ug/ml