

Data Path : Z:\pestpcbsrv\HPCHEM1\FID_C\Data\FC103024AL\
 Data File : FC067572.D
 Signal(s) : FID1A.ch
 Acq On : 30 Oct 2024 19:54
 Operator : YP/AJ
 Sample : P4578-05D
 Misc :
 ALS Vial : 18 Sample Multiplier: 1

Instrument :
 FID_C
ClientSampleId :
 WB-305-BOT

Integration File: autoint1.e
 Quant Time: Nov 01 00:20:04 2024
 Quant Method : Z:\pestpcbsrv\HPCHEM1\FID_C\Method\Aliphatic EPH 102324.M
 Quant Title : GC Extractables
 QLast Update : Wed Oct 23 18:12:58 2024
 Response via : Initial Calibration
 Integrator: ChemStation

Volume Inj. : 1 ul
 Signal Phase : Rxi-1ms
 Signal Info : 20M x 0.18mm x 0.18um

Compound	R.T.	Response	Conc Units

System Monitoring Compounds			
12) S 1-chlorooctadecane (S...	12.932	4914295	45.508 ug/ml
Spiked Amount	50.000	Recovery	= 91.02%

Target Compounds

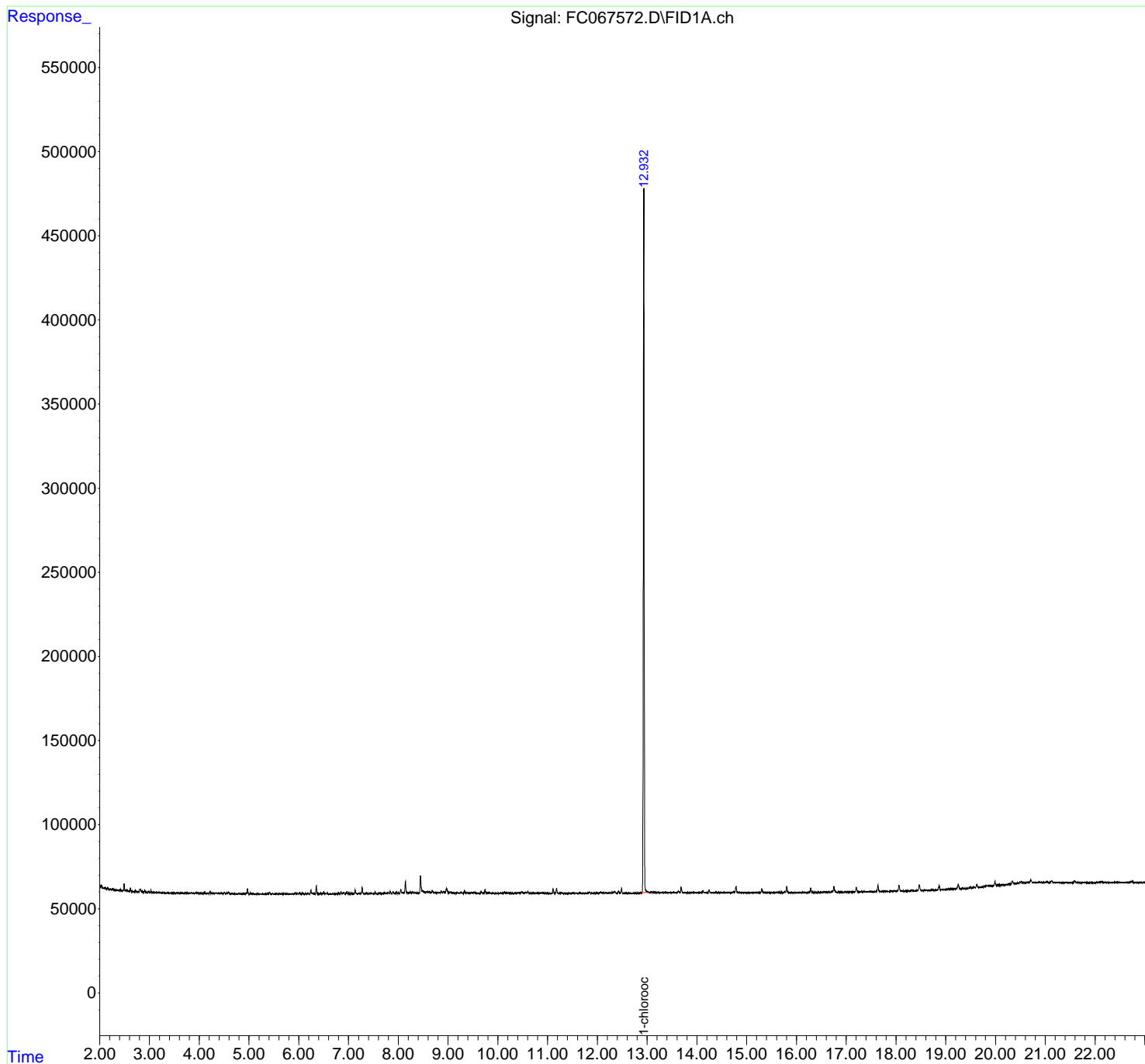
(f)=RT Delta > 1/2 Window (m)=manual int.

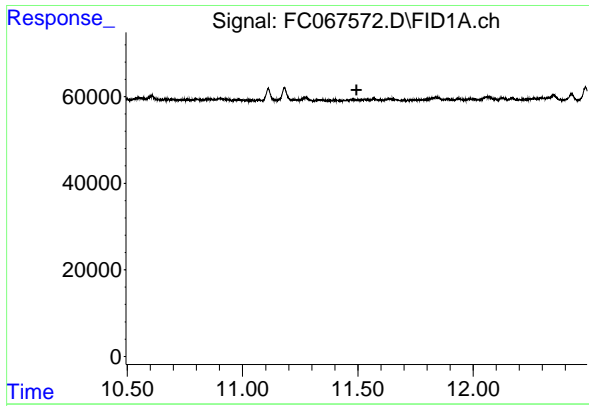
Data Path : Z:\pestpcbsrv\HPCHEM1\FID_C\Data\FC103024AL\
 Data File : FC067572.D
 Signal(s) : FID1A.ch
 Acq On : 30 Oct 2024 19:54
 Operator : YP/AJ
 Sample : P4578-05D
 Misc :
 ALS Vial : 18 Sample Multiplier: 1

Instrument :
 FID_C
 ClientSampleId :
 WB-305-BOT

Integration File: autoint1.e
 Quant Time: Nov 01 00:20:04 2024
 Quant Method : Z:\pestpcbsrv\HPCHEM1\FID_C\Method\Aliphatic EPH 102324.M
 Quant Title : GC Extractables
 QLast Update : Wed Oct 23 18:12:58 2024
 Response via : Initial Calibration
 Integrator: ChemStation

Volume Inj. : 1 ul
 Signal Phase : Rxi-1ms
 Signal Info : 20M x 0.18mm x 0.18um

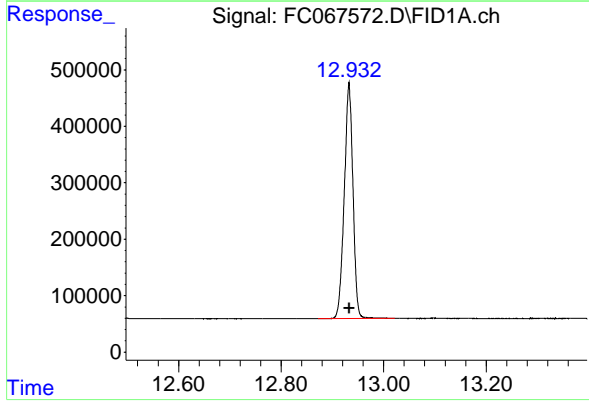




#9 ortho-Terphenyl (SURR)

R.T.: 0.000 min
 Exp R.T.: 11.494 min
 Response: 0
 Conc: N.D.

Instrument :
 FID_C
 ClientSampleId :
 WB-305-BOT



#12 1-chlorooctadecane (SURR)

R.T.: 12.932 min
 Delta R.T.: 0.000 min
 Response: 4914295
 Conc: 45.51 ug/ml