

Data Path : Z:\pestpcbsrv\HPCHEM1\FID_C\Data\FC110223AL\
 Data File : FC064983.D
 Signal(s) : FID1A.ch
 Acq On : 02 Nov 2023 16:24
 Operator : YP/AJ
 Sample : PB156855BL
 Misc :
 ALS Vial : 11 Sample Multiplier: 1

Instrument :
 FID_C
 ClientSampleId :

Integration File: autoint1.e
 Quant Time: Nov 03 00:26:39 2023
 Quant Method : Z:\pestpcbsrv\HPCHEM1\FID_C\Method\Aliphatic EPH 102823.M
 Quant Title : GC Extractables
 QLast Update : Sat Oct 28 02:12:00 2023
 Response via : Initial Calibration
 Integrator: ChemStation

Volume Inj. : 1 ul
 Signal Phase : Rxi-1ms
 Signal Info : 20M x 0.18mm x 0.18um

Compound	R.T.	Response	Conc Units

System Monitoring Compounds			
12) S 1-chlorooctadecane (S...	12.945	5881781	37.207 ug/ml
Spiked Amount	50.000	Recovery =	74.41%
Target Compounds			
4) T n-Dodecane (C12)	6.382	84261	0.436 ug/ml
6) T n-Tetradecane (C14)	8.169	86927	0.461 ug/ml
7) T n-Hexadecane (C16)	9.763	61057	0.323 ug/ml
8) T n-Octadecane (C18)	11.198	79684	0.422 ug/ml
10) T n-Eicosane (C20)	12.500	81474	0.453 ug/ml
13) T n-Docosane (C22)	13.693	68110	0.397 ug/ml
14) T n-Tetracosane (C24)	14.791	66026	0.396 ug/ml

(f)=RT Delta > 1/2 Window

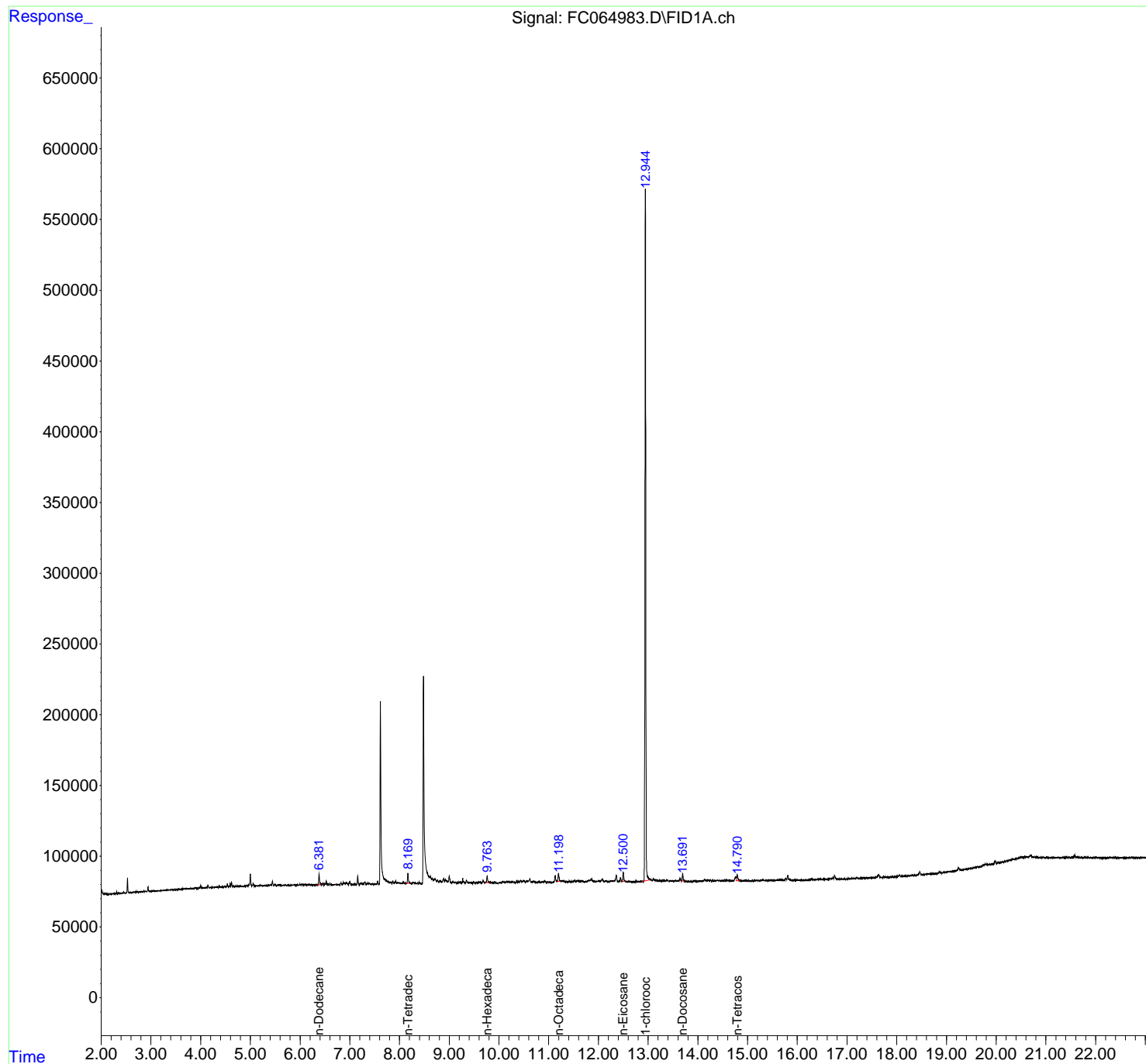
(m)=manual int.

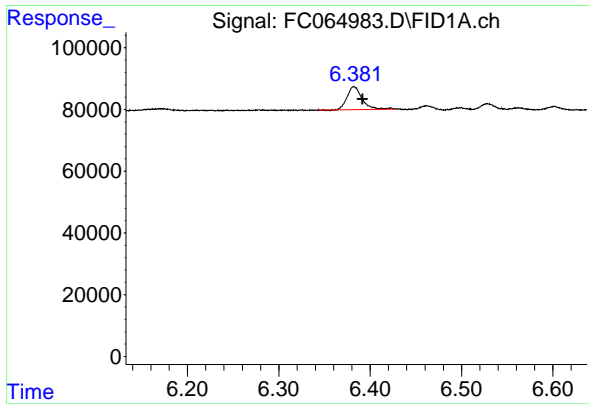
Data Path : Z:\pestpcbsrv\HPCHEM1\FID_C\Data\FC110223AL\
Data File : FC064983.D
Signal(s) : FID1A.ch
Acq On : 02 Nov 2023 16:24
Operator : YP/AJ
Sample : PB156855BL
Misc :
ALS Vial : 11 Sample Multiplier: 1

Instrument :
FID_C
ClientSampleId :

Integration File: autoint1.e
Quant Time: Nov 03 00:26:39 2023
Quant Method : Z:\pestpcbsrv\HPCHEM1\FID_C\Method\Aliphatic EPH 102823.M
Quant Title : GC Extractables
QLast Update : Sat Oct 28 02:12:00 2023
Response via : Initial Calibration
Integrator: ChemStation

Volume Inj. : 1 ul
Signal Phase : Rxi-1ms
Signal Info : 20M x 0.18mm x 0.18um

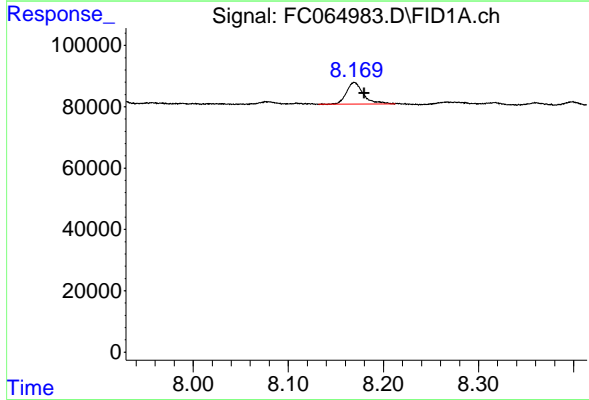




#4 n-Dodecane (C12)

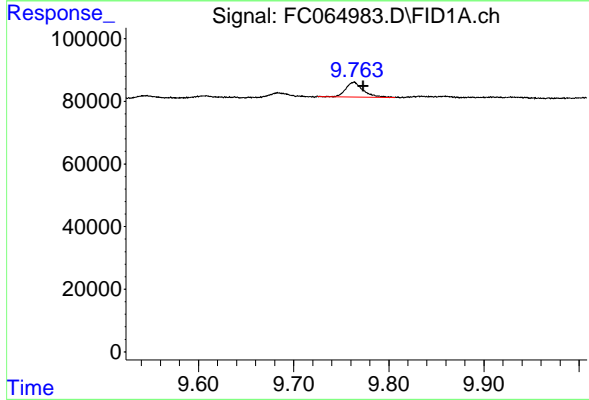
R.T.: 6.382 min
 Delta R.T.: -0.009 min
 Response: 84261
 Conc: 0.44 ug/ml

Instrument : FID_C
 ClientSampleId :



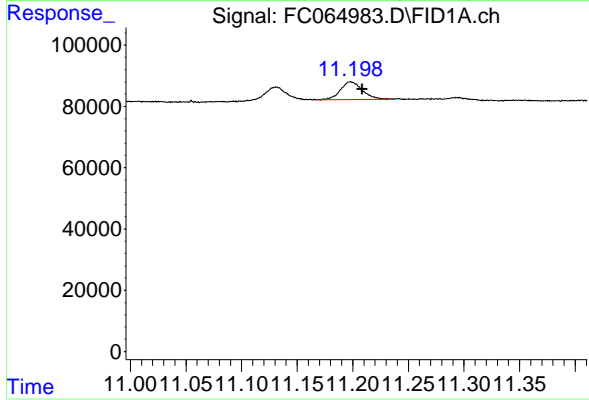
#6 n-Tetradecane (C14)

R.T.: 8.169 min
 Delta R.T.: -0.010 min
 Response: 86927
 Conc: 0.46 ug/ml



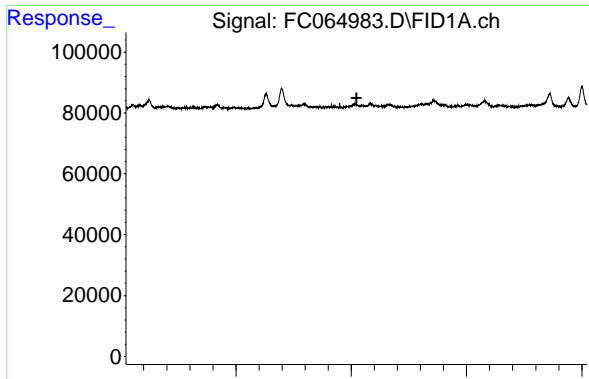
#7 n-Hexadecane (C16)

R.T.: 9.763 min
 Delta R.T.: -0.010 min
 Response: 61057
 Conc: 0.32 ug/ml



#8 n-Octadecane (C18)

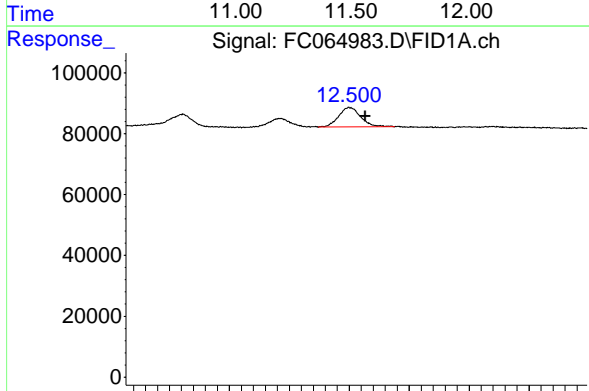
R.T.: 11.198 min
 Delta R.T.: -0.010 min
 Response: 79684
 Conc: 0.42 ug/ml



#9 ortho-Terphenyl (SURR)

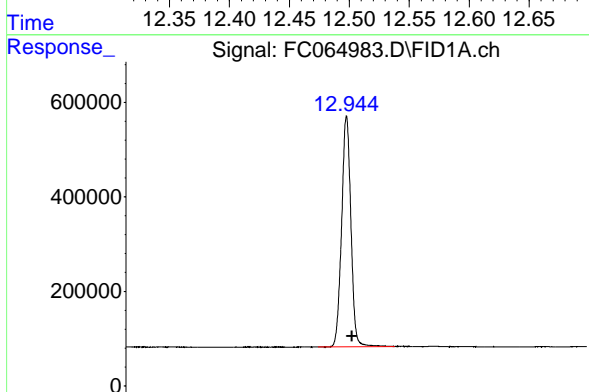
R.T.: 0.000 min
 Exp R.T.: 11.523 min
 Response: 0
 Conc: N.D.

Instrument : FID_C
 ClientSampleId :



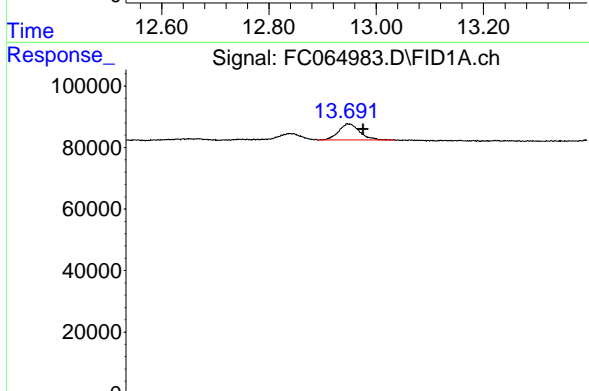
#10 n-Eicosane (C20)

R.T.: 12.500 min
 Delta R.T.: -0.013 min
 Response: 81474
 Conc: 0.45 ug/ml



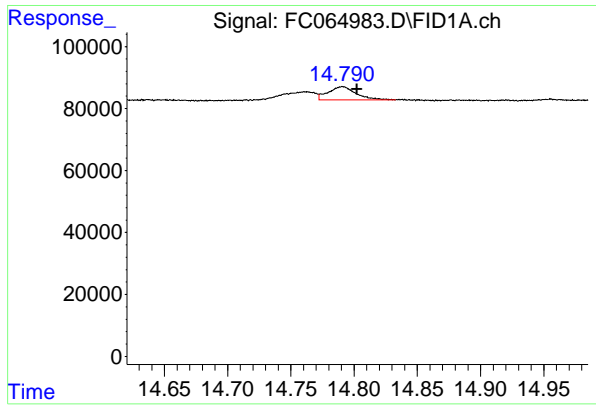
#12 1-chlorooctadecane (SURR)

R.T.: 12.945 min
 Delta R.T.: -0.010 min
 Response: 5881781
 Conc: 37.21 ug/ml



#13 n-Docosane (C22)

R.T.: 13.693 min
 Delta R.T.: -0.013 min
 Response: 68110
 Conc: 0.40 ug/ml



#14 n-Tetracosane (C24)

R.T.: 14.791 min
Delta R.T.: -0.011 min
Response: 66026
Conc: 0.40 ug/ml

Instrument :
FID_C
ClientSampleId :