

Data Path : Z:\pestpcbsrv\HPCHEM1\FID\_C\Data\FC110321AL\  
 Data File : FC056604.D  
 Signal(s) : FID1A.CH  
 Acq On : 03 Nov 2021 11:21  
 Operator : AJ\MA  
 Sample : M4388-01DL 4X  
 Misc :  
 ALS Vial : 3 Sample Multiplier: 1

Integration File: autoint1.e  
 Quant Time: Nov 03 13:48:10 2021  
 Quant Method : Z:\pestpcbsrv\HPCHEM1\FID\_C\Method\Aliphatic EPH 102121.M  
 Quant Title : GC Extractables  
 QLast Update : Thu Oct 21 01:00:25 2021  
 Response via : Initial Calibration  
 Integrator: ChemStation 6890 Scale Mode: Large solvent peaks clipped

Volume Inj. : 1 ul  
 Signal Phase : Rxi-1ms  
 Signal Info : 20M x 0.18mm x 0.18um

Compound	R.T.	Response	Conc Units
-----			
System Monitoring Compounds			
9) S ortho-Terphenyl (SURR)	11.613	945907	7.639 ug/ml
Spiked Amount	50.000	Recovery	= 15.28%
12) S 1-chlorooctadecane (S...	13.046	1119872	11.638 ug/ml
Spiked Amount	50.000	Recovery	= 23.28%

Target Compounds

-----

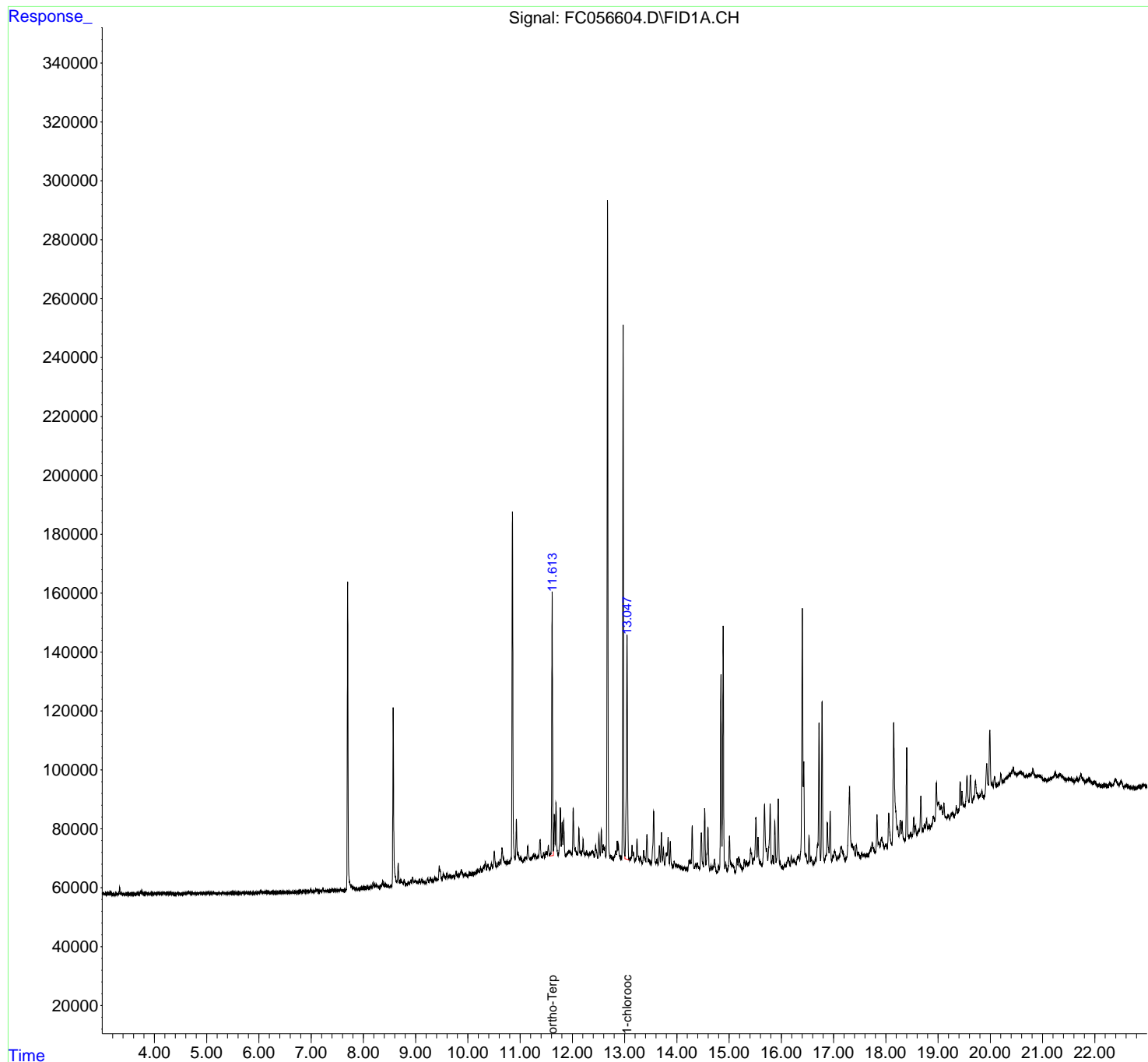
(f)=RT Delta > 1/2 Window

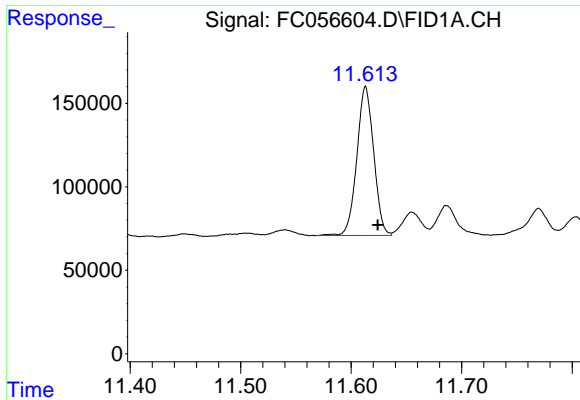
(m)=manual int.

Data Path : Z:\pestpcbsrv\HPCHEM1\FID\_C\Data\FC110321AL\  
 Data File : FC056604.D  
 Signal(s) : FID1A.CH  
 Acq On : 03 Nov 2021 11:21  
 Operator : AJ\MA  
 Sample : M4388-01DL 4X  
 Misc :  
 ALS Vial : 3 Sample Multiplier: 1

Integration File: autoint1.e  
 Quant Time: Nov 03 13:48:10 2021  
 Quant Method : Z:\pestpcbsrv\HPCHEM1\FID\_C\Method\Aliphatic EPH 102121.M  
 Quant Title : GC Extractables  
 QLast Update : Thu Oct 21 01:00:25 2021  
 Response via : Initial Calibration  
 Integrator: ChemStation 6890 Scale Mode: Large solvent peaks clipped

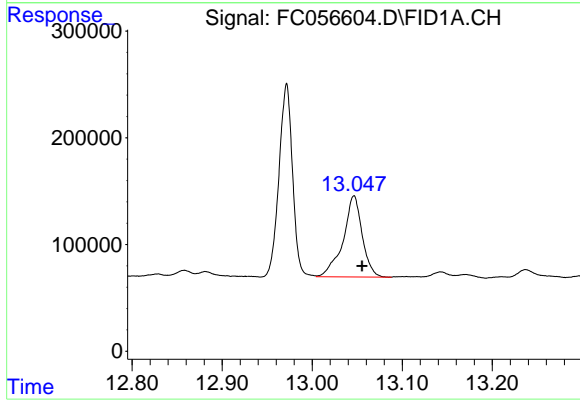
Volume Inj. : 1 ul  
 Signal Phase : Rxi-1ms  
 Signal Info : 20M x 0.18mm x 0.18um





#9 ortho-Terphenyl (SURR)

R.T.: 11.613 min  
Delta R.T.: -0.011 min  
Response: 945907  
Conc: 7.64 ug/ml



#12 1-chlorooctadecane (SURR)

R.T.: 13.046 min  
Delta R.T.: -0.009 min  
Response: 1119872  
Conc: 11.64 ug/ml