

Data Path : Z:\pestpcbsrv\HPCHEM1\FID\_C\Data\FC110321AL\  
 Data File : FC056612.D  
 Signal(s) : FID1A.CH  
 Acq On : 03 Nov 2021 17:19  
 Operator : AJ\MA  
 Sample : M4470-01  
 Misc :  
 ALS Vial : 9 Sample Multiplier: 1

Integration File: autoint1.e  
 Quant Time: Nov 04 08:42:48 2021  
 Quant Method : Z:\pestpcbsrv\HPCHEM1\FID\_C\Method\Aliphatic EPH 102121.M  
 Quant Title : GC Extractables  
 QLast Update : Thu Oct 21 01:00:25 2021  
 Response via : Initial Calibration  
 Integrator: ChemStation 6890 Scale Mode: Large solvent peaks clipped

Volume Inj. : 1 ul  
 Signal Phase : Rxi-1ms  
 Signal Info : 20M x 0.18mm x 0.18um

Compound	R.T.	Response	Conc Units
-----			
System Monitoring Compounds			
9) S ortho-Terphenyl (SURR)	11.617	4342816	35.074 ug/ml
Spiked Amount	50.000	Recovery	= 70.15%
12) S 1-chlorooctadecane (S...	13.049	4899958	50.923 ug/ml
Spiked Amount	50.000	Recovery	= 101.85%

Target Compounds

-----

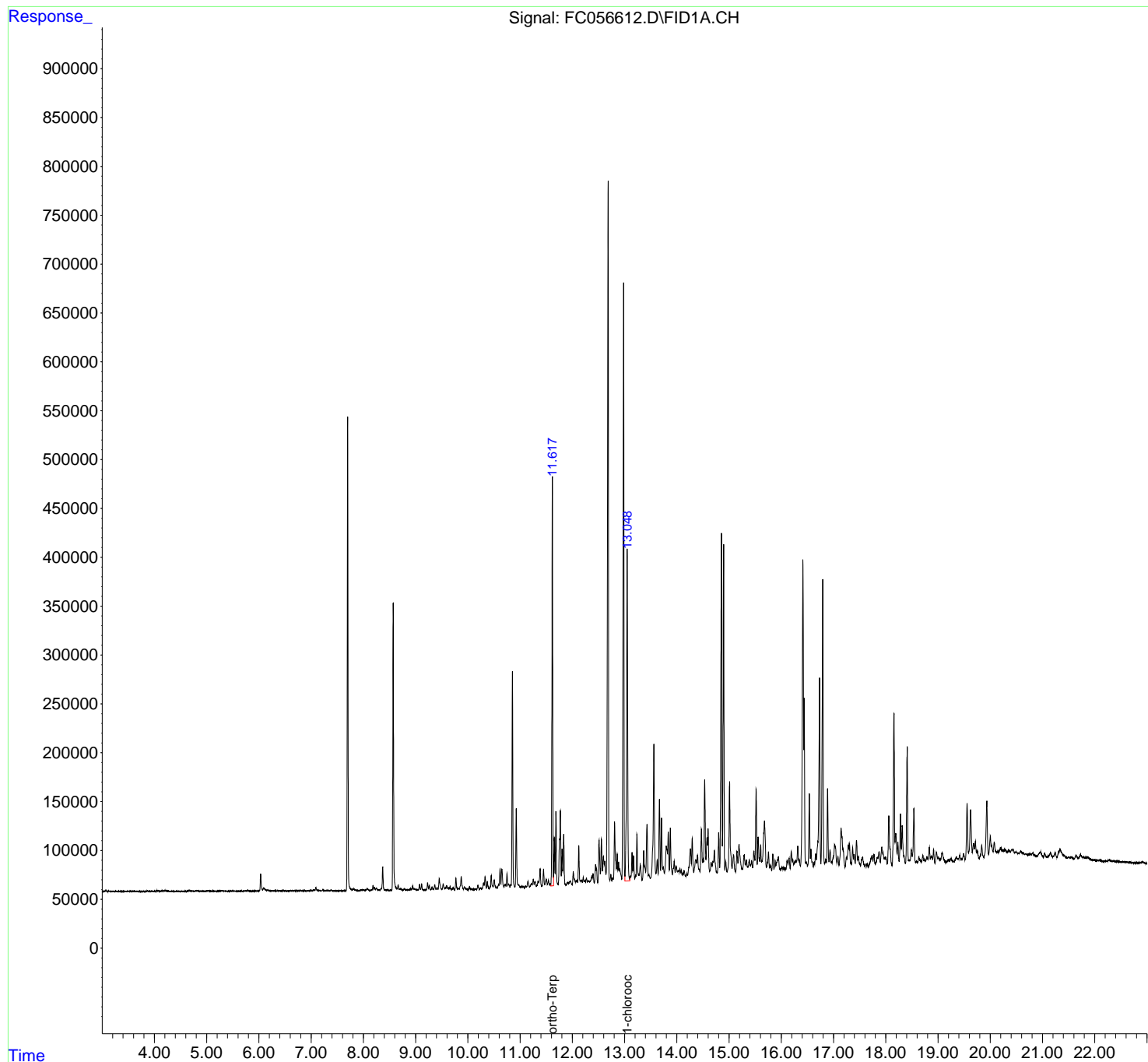
(f)=RT Delta > 1/2 Window

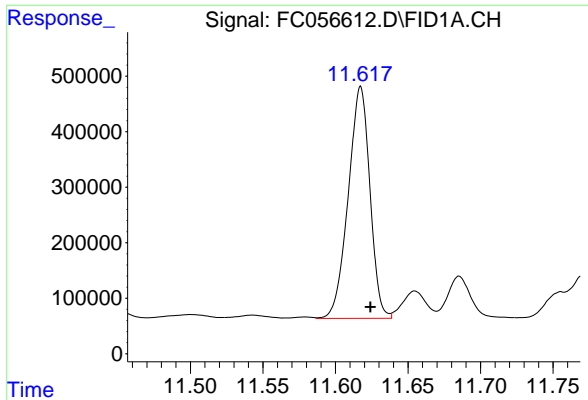
(m)=manual int.

Data Path : Z:\pestpcbsrv\HPCHEM1\FID\_C\Data\FC110321AL\  
Data File : FC056612.D  
Signal(s) : FID1A.CH  
Acq On : 03 Nov 2021 17:19  
Operator : AJ\MA  
Sample : M4470-01  
Misc :  
ALS Vial : 9 Sample Multiplier: 1

Integration File: autoint1.e  
Quant Time: Nov 04 08:42:48 2021  
Quant Method : Z:\pestpcbsrv\HPCHEM1\FID\_C\Method\Aliphatic EPH 102121.M  
Quant Title : GC Extractables  
QLast Update : Thu Oct 21 01:00:25 2021  
Response via : Initial Calibration  
Integrator: ChemStation 6890 Scale Mode: Large solvent peaks clipped

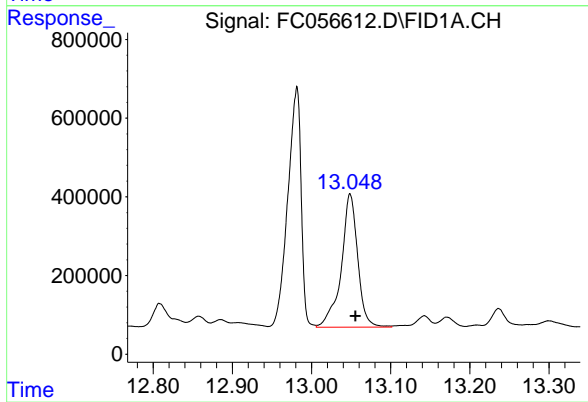
Volume Inj. : 1 ul  
Signal Phase : Rxi-1ms  
Signal Info : 20M x 0.18mm x 0.18um





#9 ortho-Terphenyl (SURR)

R.T.: 11.617 min  
Delta R.T.: -0.007 min  
Response: 4342816  
Conc: 35.07 ug/ml



#12 1-chlorooctadecane (SURR)

R.T.: 13.049 min  
Delta R.T.: -0.007 min  
Response: 4899958  
Conc: 50.92 ug/ml