

Data Path : Z:\pestpcbsrv\HPCHEM1\FID_C\Data\FC110420AL\
 Data File : FC050584.D
 Signal(s) : FID1A.CH
 Acq On : 05 Nov 2020 7:00
 Operator : DD\AJ
 Sample : L4596-01DL 5X
 Misc :
 ALS Vial : 23 Sample Multiplier: 1

Integration File: autoint1.e
 Quant Time: Nov 05 07:36:53 2020
 Quant Method : Z:\pestpcbsrv\HPCHEM1\FID_C\Method\Alaphatic EPH 110220.M
 Quant Title : GC Extractables
 QLast Update : Tue Nov 03 02:36:40 2020
 Response via : Initial Calibration
 Integrator: ChemStation 6890 Scale Mode: Large solvent peaks clipped

Volume Inj. : 1 ul
 Signal Phase : Rxi-1ms
 Signal Info : 20M x 0.18mm x 0.18um

Compound	R.T.	Response	Conc Units
System Monitoring Compounds			
9) S ortho-Terphenyl (SURR)	11.624	587101	4.780 ug/ml
Spiked Amount	50.000	Recovery	= 9.56%
12) S 1-chlorooctadecane (S...	13.068	37145715	384.729 ug/ml
Spiked Amount	50.000	Recovery	= 769.46%

Target Compounds

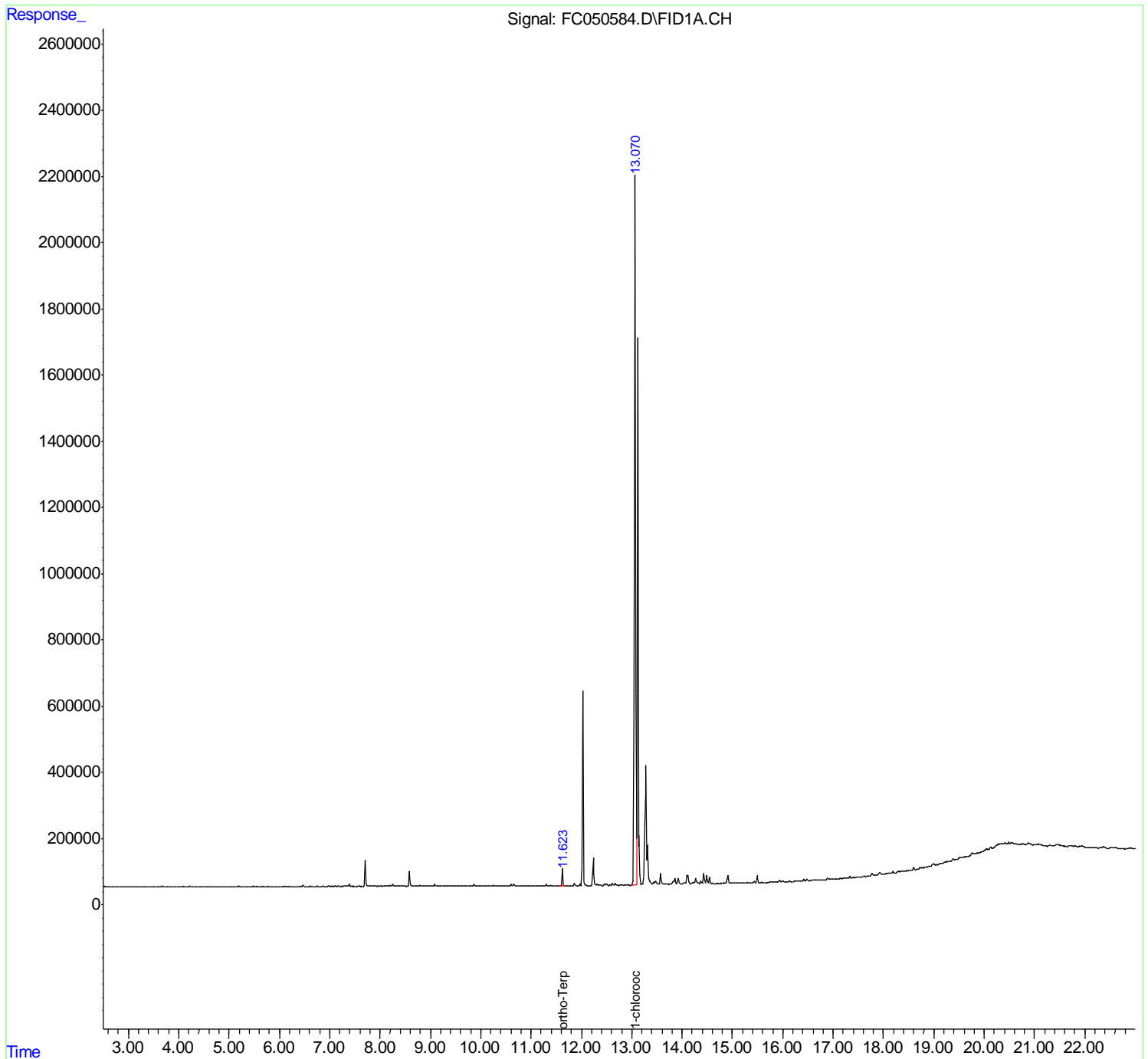
(f)=RT Delta > 1/2 Window

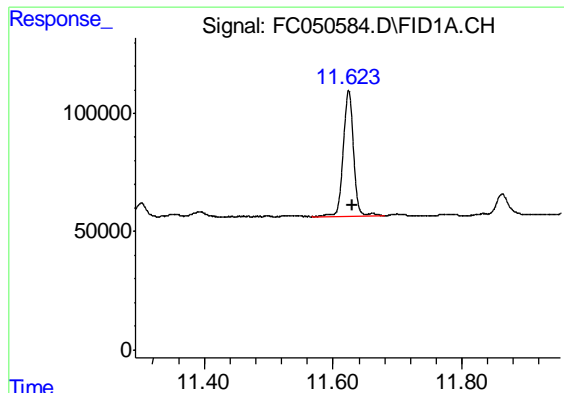
(m)=manual int.

Data Path : Z:\pestpcbsrv\HPCHEM1\FID_C\Data\FC110420AL\
Data File : FC050584.D
Signal(s) : FID1A.CH
Acq On : 05 Nov 2020 7:00
Operator : DD\AJ
Sample : L4596-01DL 5X
Misc :
ALS Vial : 23 Sample Multiplier: 1

Integration File: autoint1.e
Quant Time: Nov 05 07:36:53 2020
Quant Method : Z:\pestpcbsrv\HPCHEM1\FID_C\Method\Alaphatic EPH 110220.M
Quant Title : GC Extractables
QLast Update : Tue Nov 03 02:36:40 2020
Response via : Initial Calibration
Integrator: ChemStation 6890 Scale Mode: Large solvent peaks clipped

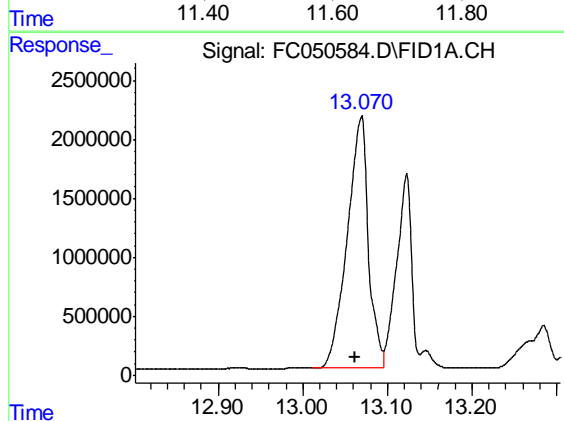
Volume Inj. : 1 ul
Signal Phase : Rxi-1ms
Signal Info : 20M x 0.18mm x 0.18um





#9 ortho-Terphenyl (SURR)

R.T.: 11.624 min
Delta R.T.: -0.005 min
Response: 587101
Conc: 4.78 ug/ml



#12 1-chlorooctadecane (SURR)

R.T.: 13.068 min
Delta R.T.: 0.007 min
Response: 37145715
Conc: 384.73 ug/ml