

Data Path : Z:\pestpcbsrv\HPCHEM1\FID_C\Data\FC110420AL\
 Data File : FC050587.D
 Signal(s) : FID1A.CH
 Acq On : 05 Nov 2020 8:53
 Operator : DD\AJ
 Sample : L4613-03DL 5X
 Misc :
 ALS Vial : 26 Sample Multiplier: 1

Integration File: autoint1.e
 Quant Time: Nov 05 09:33:55 2020
 Quant Method : Z:\pestpcbsrv\HPCHEM1\FID_C\Method\Alaphatic EPH 110220.M
 Quant Title : GC Extractables
 QLast Update : Tue Nov 03 02:36:40 2020
 Response via : Initial Calibration
 Integrator: ChemStation 6890 Scale Mode: Large solvent peaks clipped

Volume Inj. : 1 ul
 Signal Phase : Rxi-1ms
 Signal Info : 20M x 0.18mm x 0.18um

Compound	R.T.	Response	Conc Units
System Monitoring Compounds			
9) S ortho-Terphenyl (SURR)	11.623	515840	4.200 ug/ml
Spiked Amount	50.000	Recovery =	8.40%
12) S 1-chlorooctadecane (S...	13.058	436620	4.522 ug/ml
Spiked Amount	50.000	Recovery =	9.04%

Target Compounds

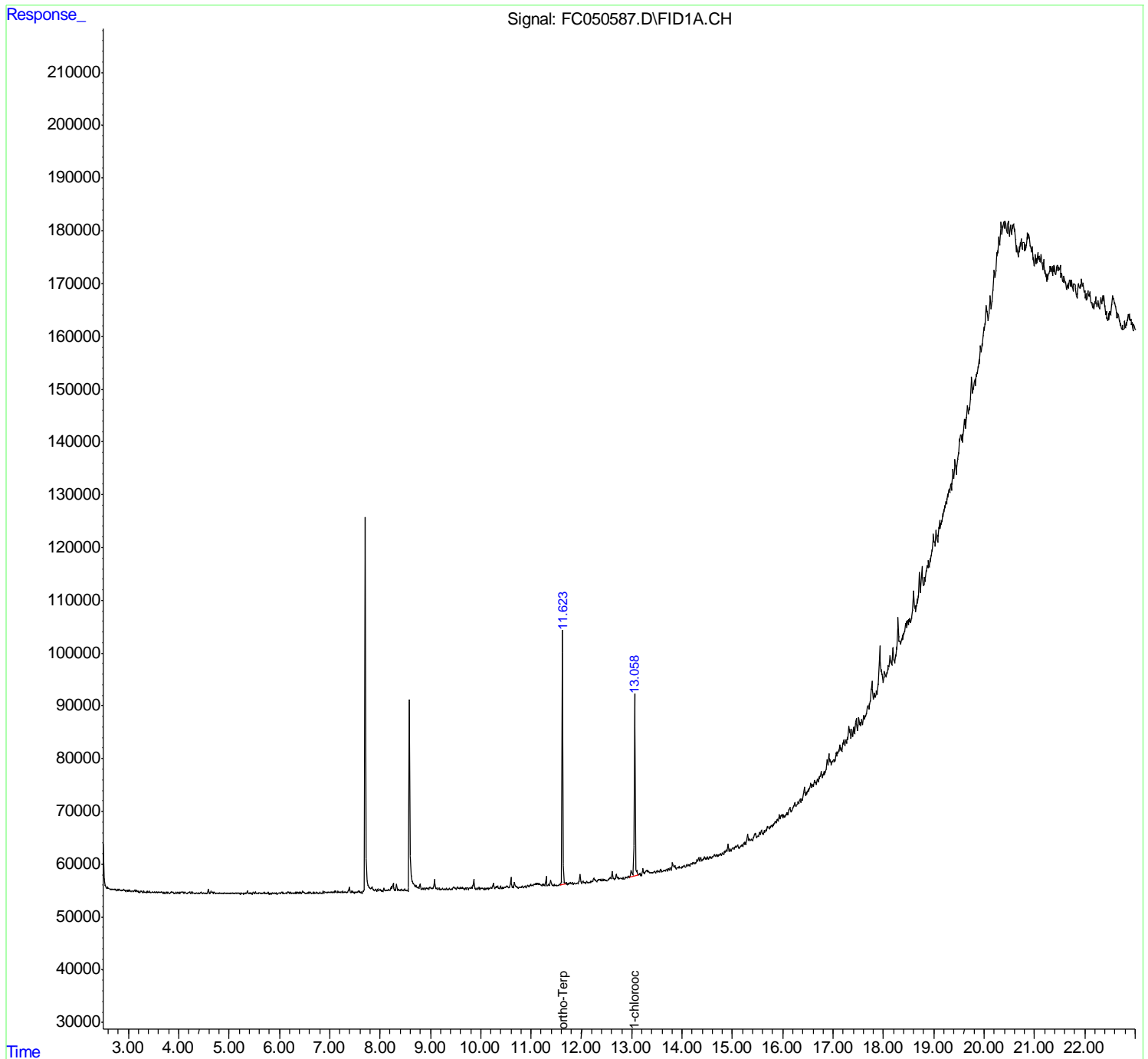
(f)=RT Delta > 1/2 Window

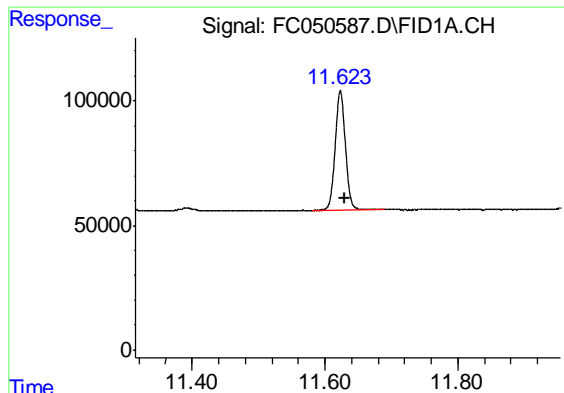
(m)=manual int.

Data Path : Z:\pestpcbsrv\HPCHEM1\FID_C\Data\FC110420AL\
Data File : FC050587.D
Signal(s) : FID1A.CH
Acq On : 05 Nov 2020 8:53
Operator : DD\AJ
Sample : L4613-03DL 5X
Misc :
ALS Vial : 26 Sample Multiplier: 1

Integration File: autoint1.e
Quant Time: Nov 05 09:33:55 2020
Quant Method : Z:\pestpcbsrv\HPCHEM1\FID_C\Method\Alaphatic EPH 110220.M
Quant Title : GC Extractables
QLast Update : Tue Nov 03 02:36:40 2020
Response via : Initial Calibration
Integrator: ChemStation 6890 Scale Mode: Large solvent peaks clipped

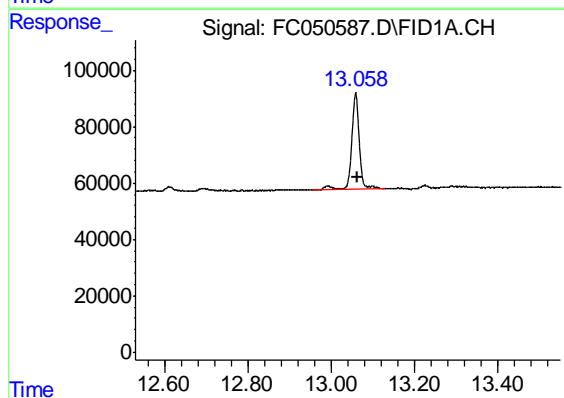
Volume Inj. : 1 ul
Signal Phase : Rxi-1ms
Signal Info : 20M x 0.18mm x 0.18um





#9 ortho-Terphenyl (SURR)

R.T.: 11.623 min
Delta R.T.: -0.006 min
Response: 515840
Conc: 4.20 ug/ml



#12 1-chlorooctadecane (SURR)

R.T.: 13.058 min
Delta R.T.: -0.003 min
Response: 436620
Conc: 4.52 ug/ml