

Data Path : Z:\pestpcbsrv\HPCHEM1\FID_C\Data\FC110520AL\
 Data File : FC050607.D
 Signal(s) : FID1A.CH
 Acq On : 05 Nov 2020 22:14
 Operator : DD\AJ
 Sample : L4617-03
 Misc :
 ALS Vial : 17 Sample Multiplier: 1

Integration File: sample.E
 Quant Time: Nov 06 00:17:22 2020
 Quant Method : Z:\pestpcbsrv\HPCHEM1\FID_C\Method\Alaphatic EPH 110220.M
 Quant Title : GC Extractables
 QLast Update : Tue Nov 03 02:36:40 2020
 Response via : Initial Calibration
 Integrator: ChemStation 6890 Scale Mode: Large solvent peaks clipped

Volume Inj. : 1 ul
 Signal Phase : Rxi-1ms
 Signal Info : 20M x 0.18mm x 0.18um

Compound	R.T.	Response	Conc Units

System Monitoring Compounds			
12) S 1-chlorooctadecane (S...	13.054	2346401	24.302 ug/ml
Spiked Amount	50.000	Recovery	= 48.60%

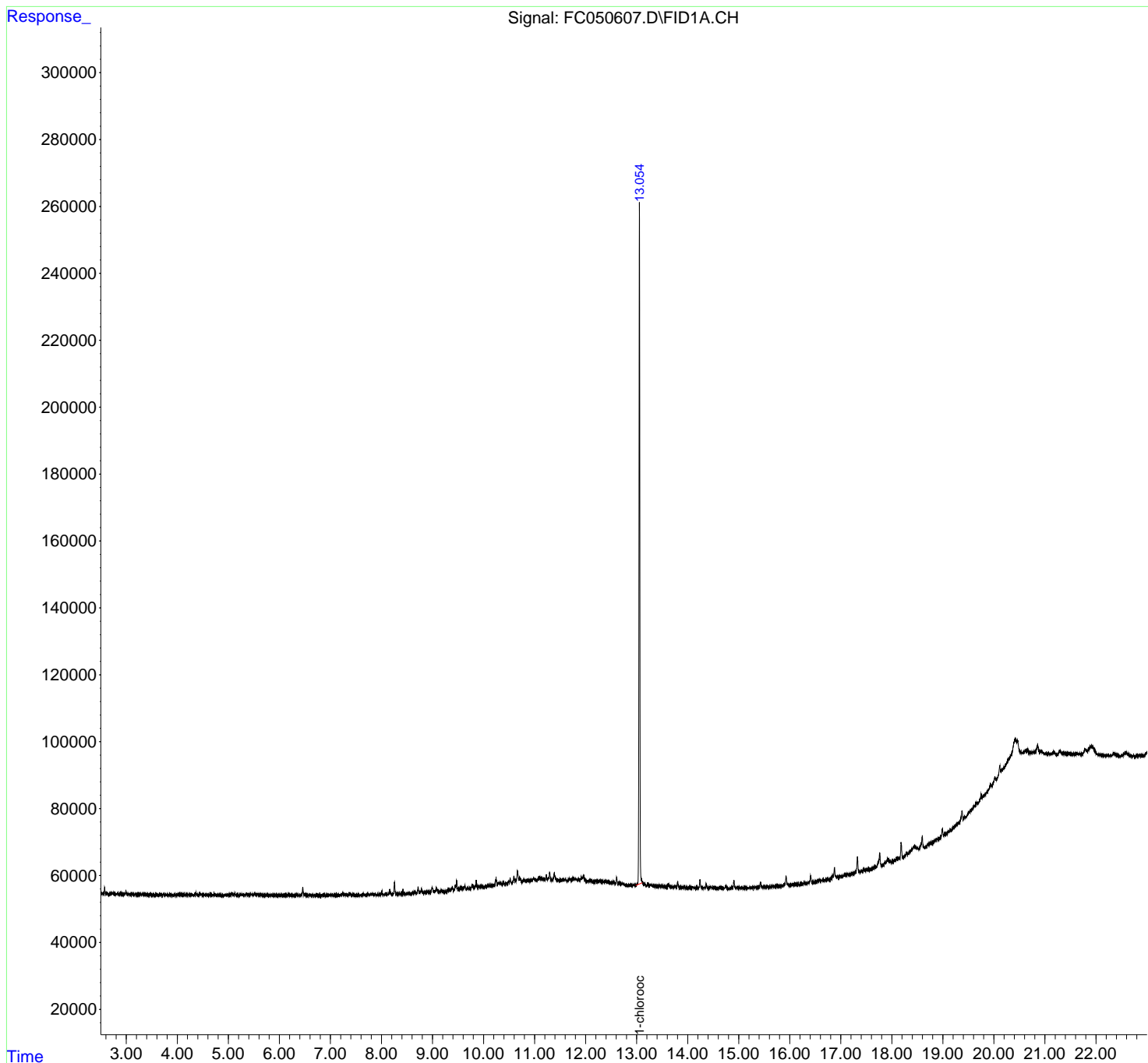
Target Compounds

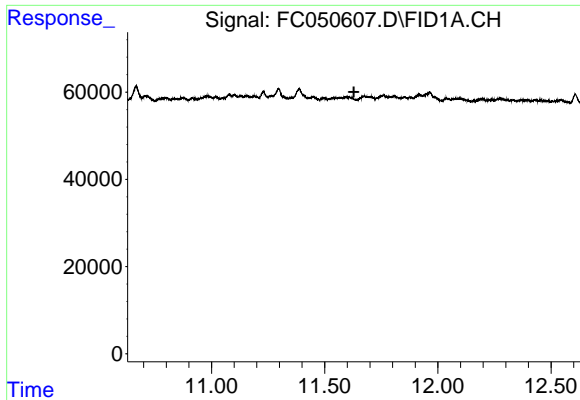
(f)=RT Delta > 1/2 Window (m)=manual int.

Data Path : Z:\pestpcbsrv\HPCHEM1\FID_C\Data\FC110520AL\
Data File : FC050607.D
Signal(s) : FID1A.CH
Acq On : 05 Nov 2020 22:14
Operator : DD\AJ
Sample : L4617-03
Misc :
ALS Vial : 17 Sample Multiplier: 1

Integration File: sample.E
Quant Time: Nov 06 00:17:22 2020
Quant Method : Z:\pestpcbsrv\HPCHEM1\FID_C\Method\Alaphatic EPH 110220.M
Quant Title : GC Extractables
QLast Update : Tue Nov 03 02:36:40 2020
Response via : Initial Calibration
Integrator: ChemStation 6890 Scale Mode: Large solvent peaks clipped

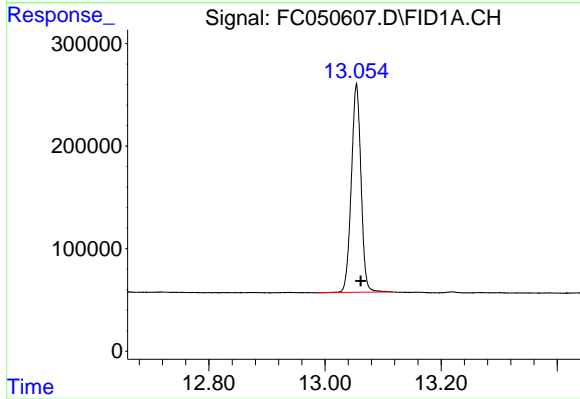
Volume Inj. : 1 ul
Signal Phase : Rxi-1ms
Signal Info : 20M x 0.18mm x 0.18um





#9 ortho-Terphenyl (SURR)

R.T.: 0.000 min
Exp R.T. : 11.629 min
Response: 0
Conc: N.D.



#12 1-chlorooctadecane (SURR)

R.T.: 13.054 min
Delta R.T.: -0.007 min
Response: 2346401
Conc: 24.30 ug/ml