

Data Path : Z:\pestpcbsrv\HPCHEM1\FID\_C\Data\FC110520AL\  
 Data File : FC050620.D  
 Signal(s) : FID1A.CH  
 Acq On : 06 Nov 2020 6:19  
 Operator : DD\AJ  
 Sample : L4613-04DL 10X  
 Misc :  
 ALS Vial : 28 Sample Multiplier: 1

Integration File: sample.E  
 Quant Time: Nov 06 07:11:08 2020  
 Quant Method : Z:\pestpcbsrv\HPCHEM1\FID\_C\Method\Alaphatic EPH 110220.M  
 Quant Title : GC Extractables  
 QLast Update : Tue Nov 03 02:36:40 2020  
 Response via : Initial Calibration  
 Integrator: ChemStation 6890 Scale Mode: Large solvent peaks clipped

Volume Inj. : 1 ul  
 Signal Phase : Rxi-1ms  
 Signal Info : 20M x 0.18mm x 0.18um

Compound	R.T.	Response	Conc Units
-----			
System Monitoring Compounds			
9) S ortho-Terphenyl (SURR)	11.618	310511	2.528 ug/ml
Spiked Amount	50.000	Recovery	= 5.06%
12) S 1-chlorooctadecane (S...	13.051	316520	3.278 ug/mlm
Spiked Amount	50.000	Recovery	= 6.56%

Target Compounds

-----

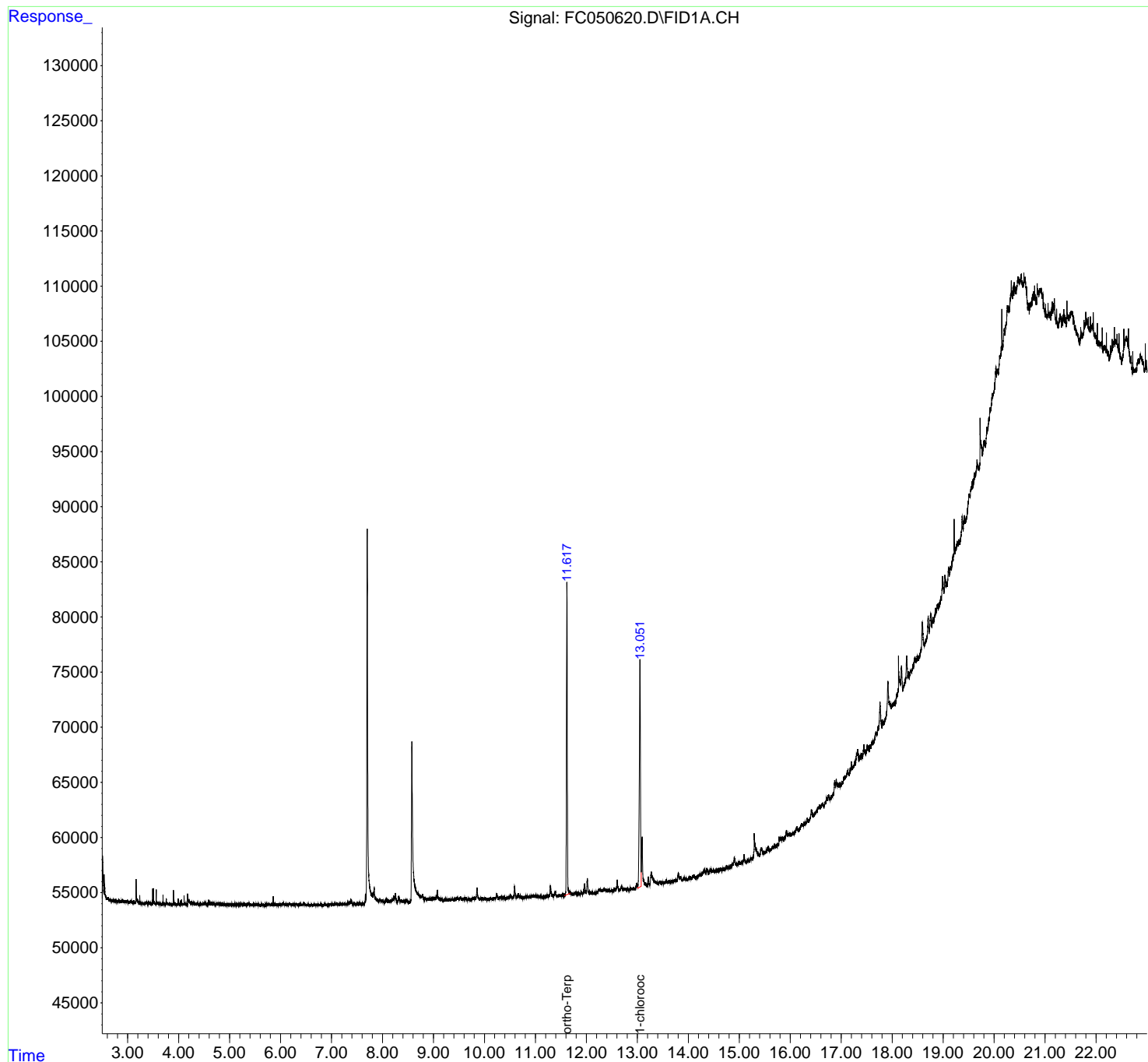
(f)=RT Delta > 1/2 Window

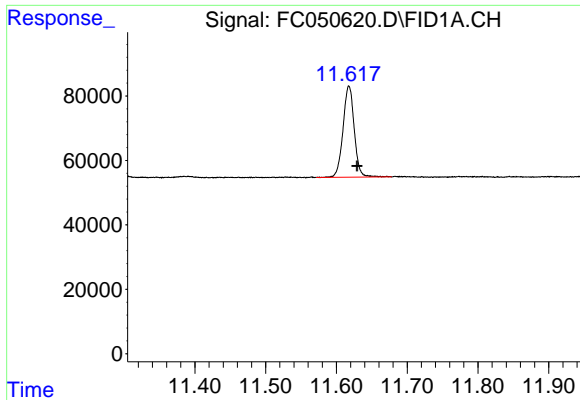
(m)=manual int.

Data Path : Z:\pestpcbsrv\HPCHEM1\FID\_C\Data\FC110520AL\  
 Data File : FC050620.D  
 Signal(s) : FID1A.CH  
 Acq On : 06 Nov 2020 6:19  
 Operator : DD\AJ  
 Sample : L4613-04DL 10X  
 Misc :  
 ALS Vial : 28 Sample Multiplier: 1

Integration File: sample.E  
 Quant Time: Nov 06 07:11:08 2020  
 Quant Method : Z:\pestpcbsrv\HPCHEM1\FID\_C\Method\Alaphatic EPH 110220.M  
 Quant Title : GC Extractables  
 QLast Update : Tue Nov 03 02:36:40 2020  
 Response via : Initial Calibration  
 Integrator: ChemStation 6890 Scale Mode: Large solvent peaks clipped

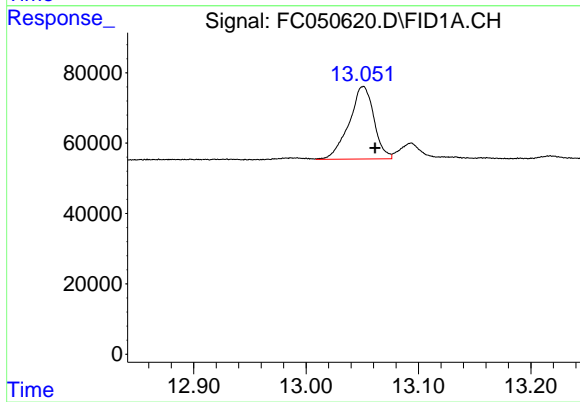
Volume Inj. : 1 ul  
 Signal Phase : Rxi-1ms  
 Signal Info : 20M x 0.18mm x 0.18um





#9 ortho-Terphenyl (SURR)

R.T.: 11.618 min  
Delta R.T.: -0.011 min  
Response: 310511  
Conc: 2.53 ug/ml



#12 1-chlorooctadecane (SURR)

R.T.: 13.051 min  
Delta R.T.: -0.011 min  
Response: 316520  
Conc: 3.28 ug/ml m