

Data Path : Z:\pestpcbsrv\HPCHEM1\FID_A\Data\FA111020\
Data File : FA003073.D
Signal(s) : FID1A.CH
Acq On : 10 Nov 2020 12:07
Operator : AJ/DD
Sample : L4616-01
Misc :
ALS Vial : 14 Sample Multiplier: 1

Integration File: autoint1.e
Quant Time: Nov 10 16:55:17 2020
Quant Method : Z:\pestpcbsrv\HPCHEM1\FID_A\Method\FA111020 GASES.M
Quant Title :
QLast Update : Tue Nov 10 10:18:24 2020
Response via : Initial Calibration
Integrator: ChemStation

Volume Inj. :
Signal Phase : RT-U Plot
Signal Info : 30M x 0.32mm

Compound	R.T.	Response	Conc Units

Target Compounds			
3) Methane	2.317	112	1.697 ppmv

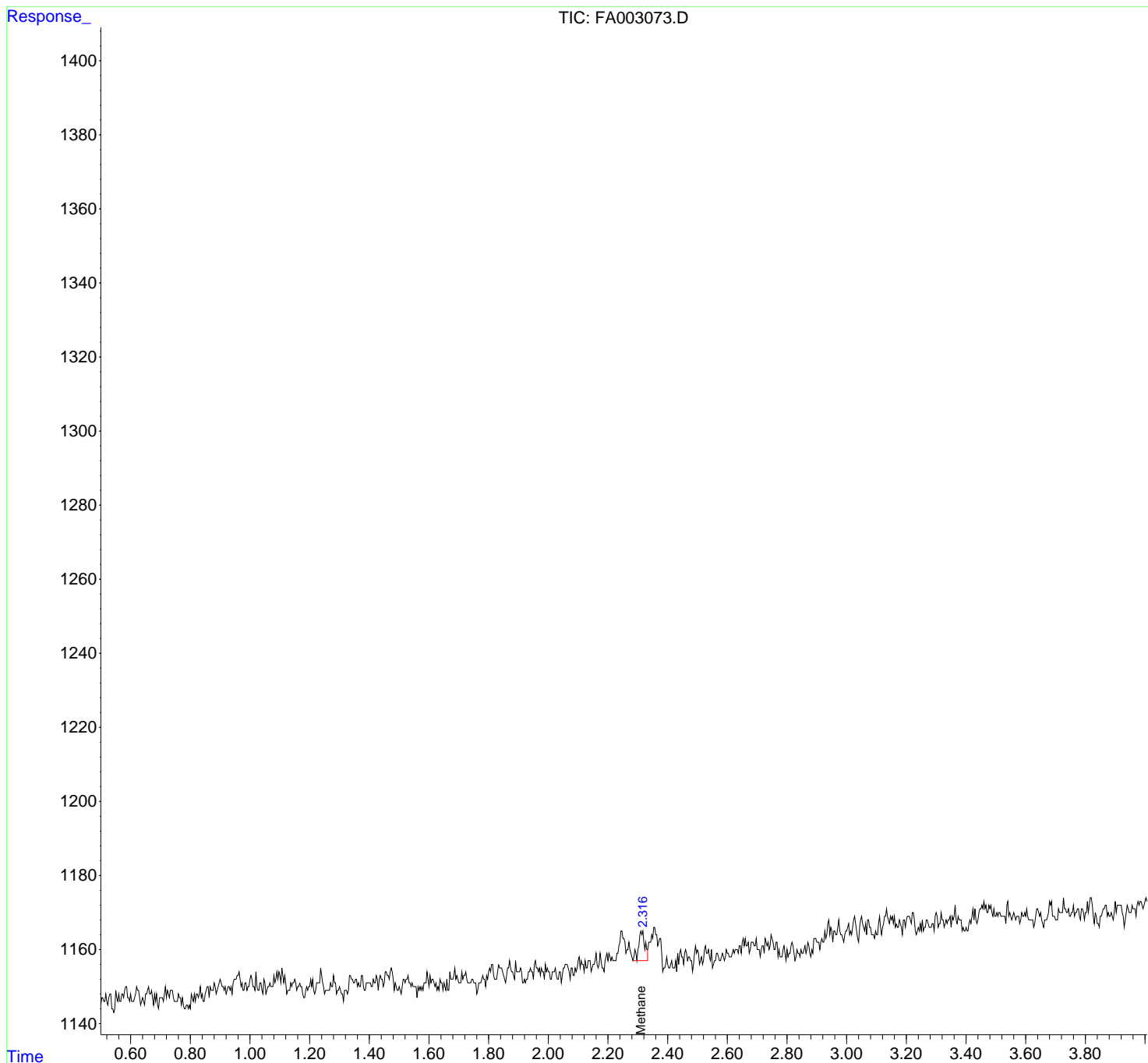
(f)=RT Delta > 1/2 Window

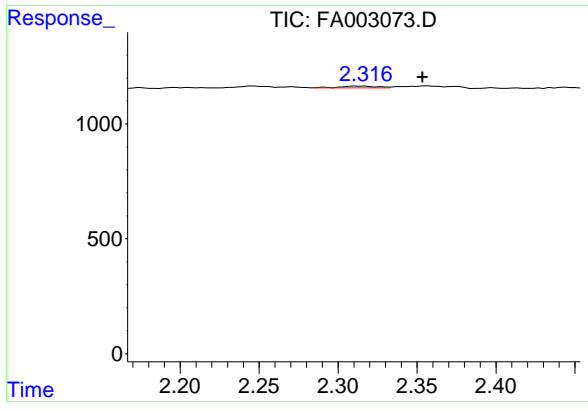
(m)=manual int.

Data Path : Z:\pestpcbsrv\HPCHEM1\FID_A\Data\FA111020\
 Data File : FA003073.D
 Signal(s) : FID1A.CH
 Acq On : 10 Nov 2020 12:07
 Operator : AJ/DD
 Sample : L4616-01
 Misc :
 ALS Vial : 14 Sample Multiplier: 1

Integration File: autoint1.e
 Quant Time: Nov 10 16:55:17 2020
 Quant Method : Z:\pestpcbsrv\HPCHEM1\FID_A\Method\FA111020 GASES.M
 Quant Title :
 QLast Update : Tue Nov 10 10:18:24 2020
 Response via : Initial Calibration
 Integrator: ChemStation

Volume Inj. :
 Signal Phase : RT-U Plot
 Signal Info : 30M x 0.32mm





#3 Methane
R.T.: 2.317 min
Delta R.T.: -0.037 min
Response: 112
Conc: 1.70 ppmv