

Data Path : Z:\pestpcbsrv\HPCHEM1\FID\_C\Data\FC110922AL\  
 Data File : FC062129.D  
 Signal(s) : FID1A.ch  
 Acq On : 09 Nov 2022 23:11  
 Operator : YP/AJ  
 Sample : N5518-01  
 Misc :  
 ALS Vial : 15 Sample Multiplier: 1

Instrument :  
 FID\_C  
 ClientSampleId :  
 PAT-02-110822

Integration File: autoint1.e  
 Quant Time: Nov 10 03:17:59 2022  
 Quant Method : Z:\pestpcbsrv\HPCHEM1\FID\_C\Method\Aliphatic EPH 101722.M  
 Quant Title : GC Extractables  
 QLast Update : Mon Oct 17 23:26:31 2022  
 Response via : Initial Calibration  
 Integrator: ChemStation

Volume Inj. : 1 ul  
 Signal Phase : Rxi-1ms  
 Signal Info : 20M x 0.18mm x 0.18um

Compound	R.T.	Response	Conc Units
-----			
System Monitoring Compounds			
9) S ortho-Terphenyl (SURR)	11.597	3866624	26.013 ug/ml
Spiked Amount	50.000	Recovery	= 52.03%
12) S 1-chlorooctadecane (S...	13.033	4129896	35.449 ug/ml
Spiked Amount	50.000	Recovery	= 70.90%

Target Compounds

(f)=RT Delta > 1/2 Window

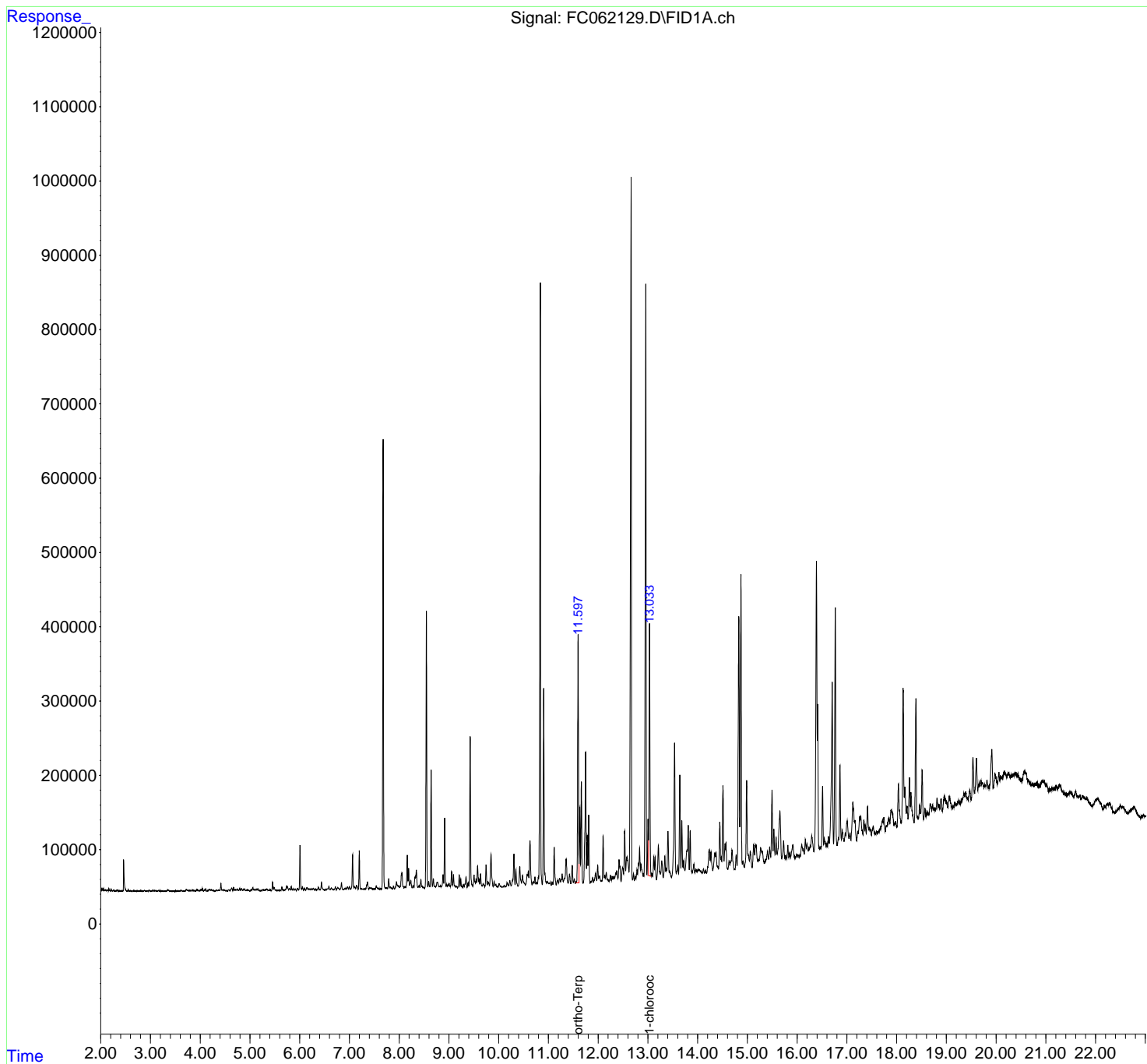
(m)=manual int.

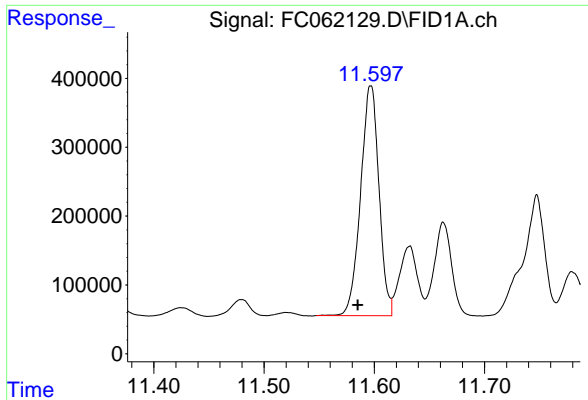
Data Path : Z:\pestpcbsrv\HPCHEM1\FID\_C\Data\FC110922AL\  
 Data File : FC062129.D  
 Signal(s) : FID1A.ch  
 Acq On : 09 Nov 2022 23:11  
 Operator : YP/AJ  
 Sample : N5518-01  
 Misc :  
 ALS Vial : 15 Sample Multiplier: 1

Instrument :  
 FID\_C  
 ClientSampleId :  
 PAT-02-110822

Integration File: autoint1.e  
 Quant Time: Nov 10 03:17:59 2022  
 Quant Method : Z:\pestpcbsrv\HPCHEM1\FID\_C\Method\Aliphatic EPH 101722.M  
 Quant Title : GC Extractables  
 QLast Update : Mon Oct 17 23:26:31 2022  
 Response via : Initial Calibration  
 Integrator: ChemStation

Volume Inj. : 1 ul  
 Signal Phase : Rxi-1ms  
 Signal Info : 20M x 0.18mm x 0.18um

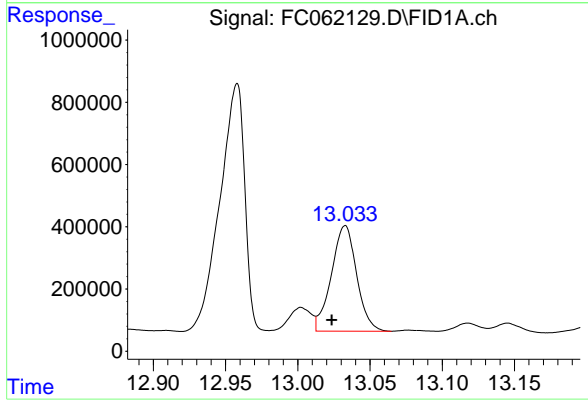




#9 ortho-Terphenyl (SURR)

R.T.: 11.597 min  
Delta R.T.: 0.012 min  
Response: 3866624  
Conc: 26.01 ug/ml

Instrument :  
FID\_C  
ClientSampleId :  
PAT-02-110822



#12 1-chlorooctadecane (SURR)

R.T.: 13.033 min  
Delta R.T.: 0.009 min  
Response: 4129896  
Conc: 35.45 ug/ml