

Data Path : Z:\pestpcbsrv\HPCHEM1\FID_C\Data\FC111018AL\
Data File : FC037579.D
Signal(s) : FID1A.CH
Acq On : 11 Nov 2018 7:44
Operator : AJ\SJ
Sample : PB114541BL
Misc :
ALS Vial : 20 Sample Multiplier: 1

Integration File: autoint1.e
Quant Time: Nov 11 13:19:44 2018
Quant Method : Z:\pestpcbsrv\HPCHEM1\FID_C\Method\Alaphatic EPH 103018.M
Quant Title : GC Extractables
QLast Update : Wed Oct 31 05:57:18 2018
Response via : Initial Calibration
Integrator: ChemStation 6890 Scale Mode: Large solvent peaks clipped

Volume Inj. : 1 ul
Signal Phase : Rxi-1ms
Signal Info : 20M x 0.18mm x 0.18um

Compound	R.T.	Response	Conc Units

System Monitoring Compounds			
12) S 1-chlorooctadecane (S...	12.758	4103285	36.623 ug/ml
Spiked Amount	50.000	Recovery	= 73.25%

Target Compounds

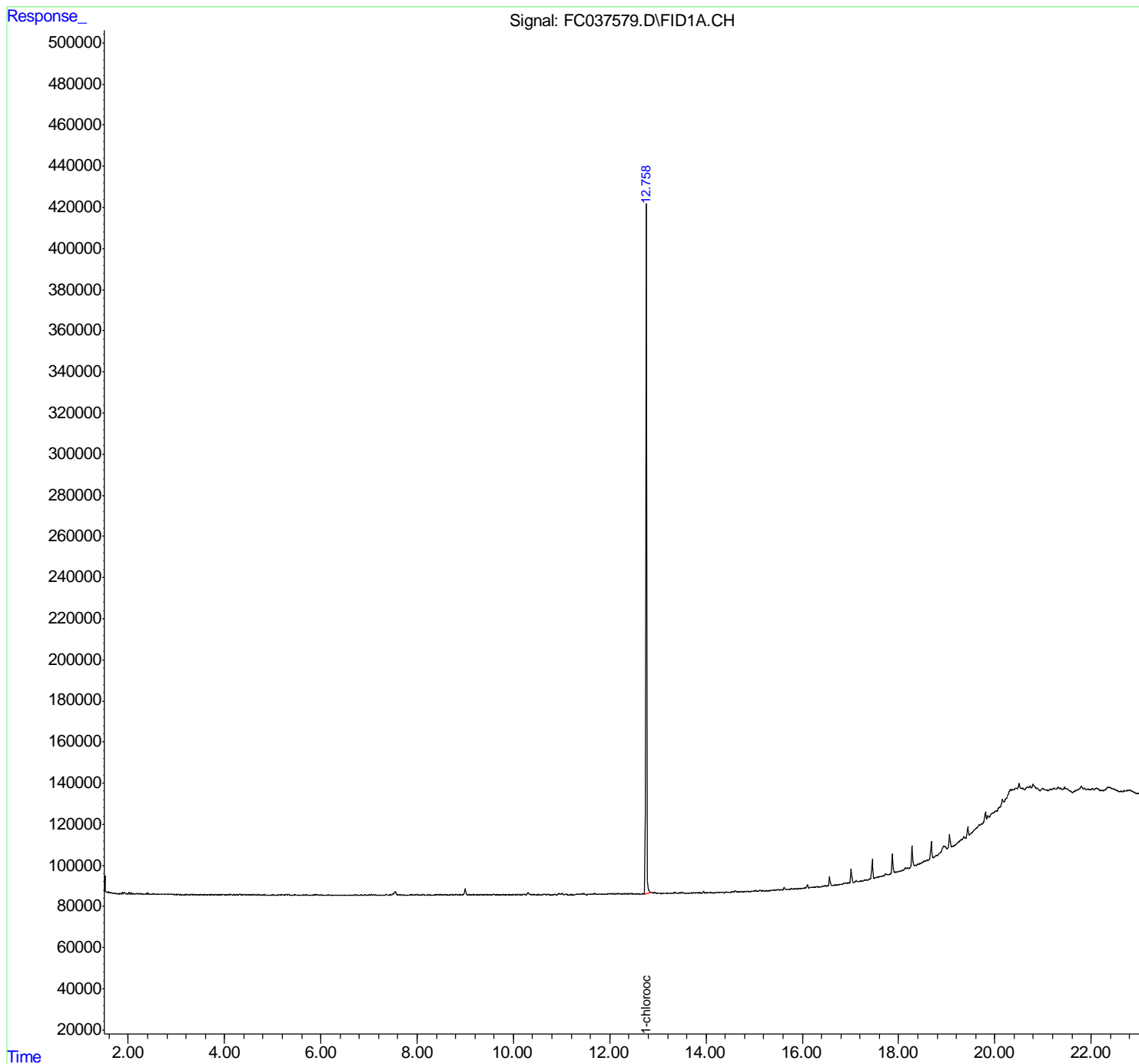
(f)=RT Delta > 1/2 Window

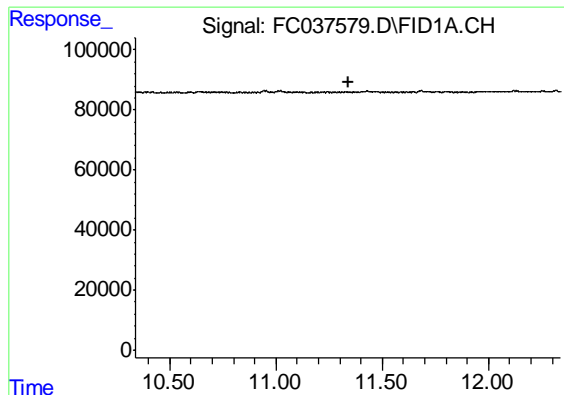
(m)=manual int.

Data Path : Z:\pestpcbsrv\HPCHEM1\FID_C\Data\FC111018AL\
Data File : FC037579.D
Signal(s) : FID1A.CH
Acq On : 11 Nov 2018 7:44
Operator : AJ\SJ
Sample : PB114541BL
Misc :
ALS Vial : 20 Sample Multiplier: 1

Integration File: autoint1.e
Quant Time: Nov 11 13:19:44 2018
Quant Method : Z:\pestpcbsrv\HPCHEM1\FID_C\Method\Alaphatic EPH 103018.M
Quant Title : GC Extractables
QLast Update : Wed Oct 31 05:57:18 2018
Response via : Initial Calibration
Integrator: ChemStation 6890 Scale Mode: Large solvent peaks clipped

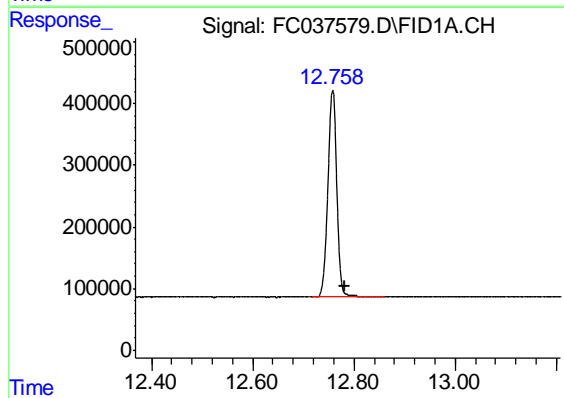
Volume Inj. : 1 ul
Signal Phase : Rxi-1ms
Signal Info : 20M x 0.18mm x 0.18um





#9 ortho-Terphenyl (SURR)

R.T.: 0.000 min
Exp R.T. : 11.339 min
Response: 0
Conc: N.D.



#12 1-chlorooctadecane (SURR)

R.T.: 12.758 min
Delta R.T.: -0.024 min
Response: 4103285
Conc: 36.62 ug/ml