

Data Path : Z:\pestpcbsrv\HPCHEM1\FID_C\Data\FC111020AL\
 Data File : FC050722.D
 Signal(s) : FID1A.CH
 Acq On : 10 Nov 2020 22:44
 Operator : DD\AJ
 Sample : L4681-01
 Misc :
 ALS Vial : 13 Sample Multiplier: 1

Integration File: autoint1.e
 Quant Time: Nov 11 00:46:59 2020
 Quant Method : Z:\pestpcbsrv\HPCHEM1\FID_C\Method\Alaphatic EPH 110220.M
 Quant Title : GC Extractables
 QLast Update : Tue Nov 03 02:36:40 2020
 Response via : Initial Calibration
 Integrator: ChemStation 6890 Scale Mode: Large solvent peaks clipped

Volume Inj. : 1 ul
 Signal Phase : Rxi-1ms
 Signal Info : 20M x 0.18mm x 0.18um

Compound	R.T.	Response	Conc Units

System Monitoring Compounds			
9) S ortho-Terphenyl (SURR)	11.623	4762817	38.776 ug/ml
Spiked Amount	50.000	Recovery	= 77.55%
12) S 1-chlorooctadecane (S...	13.056	3773655	39.085 ug/ml
Spiked Amount	50.000	Recovery	= 78.17%

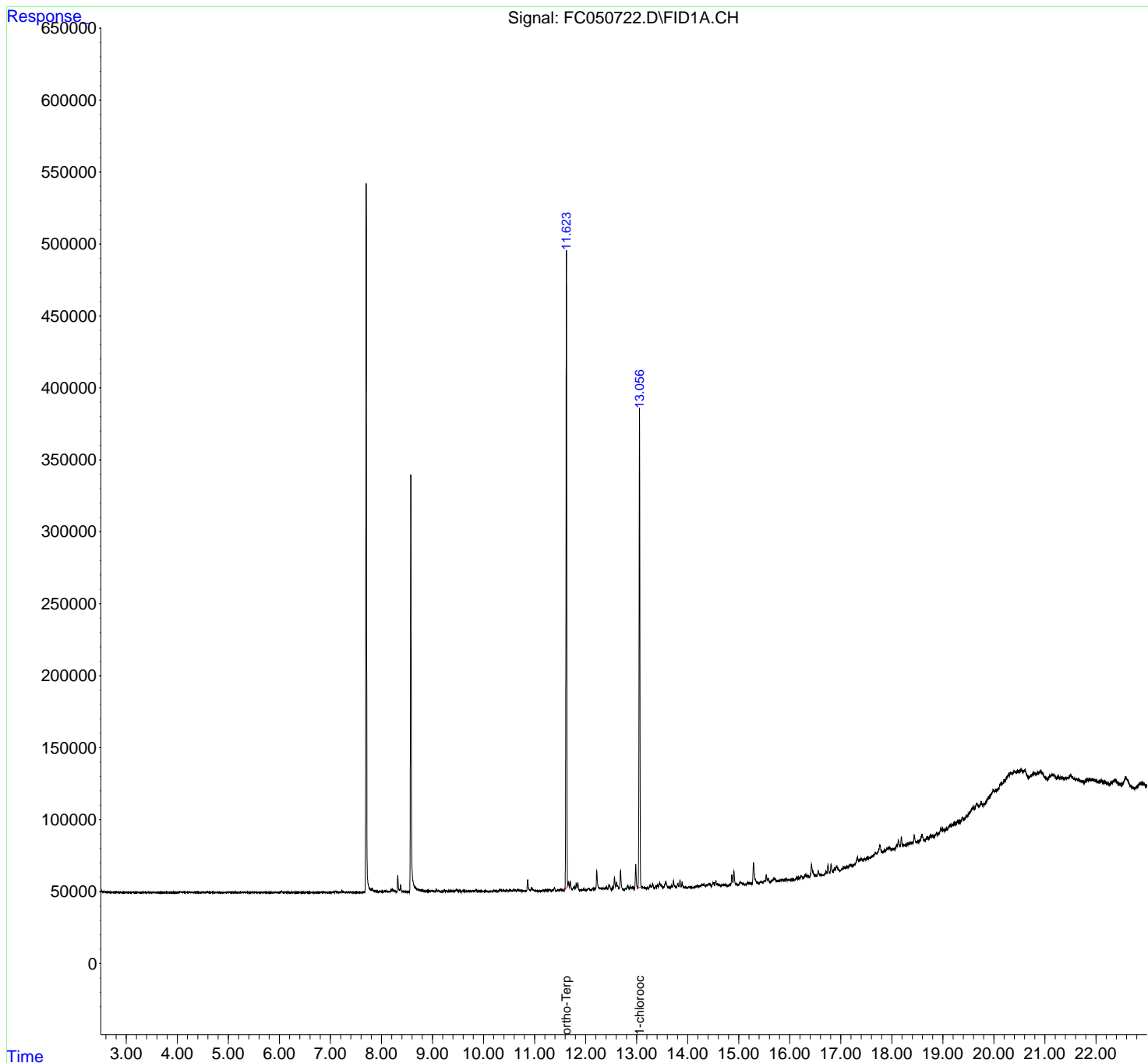
Target Compounds

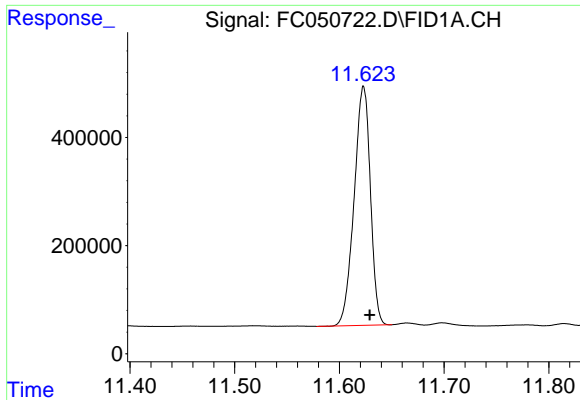
(f)=RT Delta > 1/2 Window (m)=manual int.

Data Path : Z:\pestpcbsrv\HPCHEM1\FID_C\Data\FC111020AL\
Data File : FC050722.D
Signal(s) : FID1A.CH
Acq On : 10 Nov 2020 22:44
Operator : DD\AJ
Sample : L4681-01
Misc :
ALS Vial : 13 Sample Multiplier: 1

Integration File: autoint1.e
Quant Time: Nov 11 00:46:59 2020
Quant Method : Z:\pestpcbsrv\HPCHEM1\FID_C\Method\Alaphatic EPH 110220.M
Quant Title : GC Extractables
QLast Update : Tue Nov 03 02:36:40 2020
Response via : Initial Calibration
Integrator: ChemStation 6890 Scale Mode: Large solvent peaks clipped

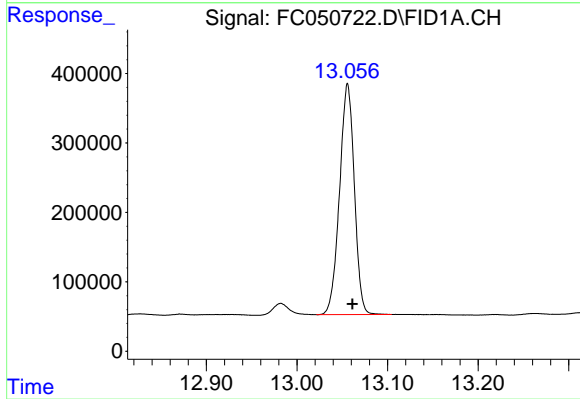
Volume Inj. : 1 ul
Signal Phase : Rxi-1ms
Signal Info : 20M x 0.18mm x 0.18um





#9 ortho-Terphenyl (SURR)

R.T.: 11.623 min
Delta R.T.: -0.006 min
Response: 4762817
Conc: 38.78 ug/ml



#12 1-chlorooctadecane (SURR)

R.T.: 13.056 min
Delta R.T.: -0.005 min
Response: 3773655
Conc: 39.08 ug/ml