

Data Path : Z:\pestpcbsrv\HPCHEM1\FID_C\Data\FC111119AL\
 Data File : FC044487.D
 Signal(s) : FID1A.CH
 Acq On : 11 Nov 2019 22:17
 Operator : DD\AJ
 Sample : K5673-04
 Misc :
 ALS Vial : 17 Sample Multiplier: 1

Integration File: sample.E
 Quant Time: Nov 12 02:19:05 2019
 Quant Method : Z:\pestpcbsrv\HPCHEM1\FID_C\Method\Alaphatic EPH 102219.M
 Quant Title : GC Extractables
 QLast Update : Tue Oct 22 12:36:58 2019
 Response via : Initial Calibration
 Integrator: ChemStation 6890 Scale Mode: Large solvent peaks clipped

Volume Inj. : 1 ul
 Signal Phase : Rxi-1ms
 Signal Info : 20M x 0.18mm x 0.18um

Compound	R.T.	Response	Conc Units
System Monitoring Compounds			
9) S ortho-Terphenyl (SURR)	11.721	3320705	22.782 ug/ml
Spiked Amount	50.000	Recovery	= 45.56%
12) S 1-chlorooctadecane (S...	13.150	19870738	177.713 ug/ml
Spiked Amount	50.000	Recovery	= 355.43%

Target Compounds

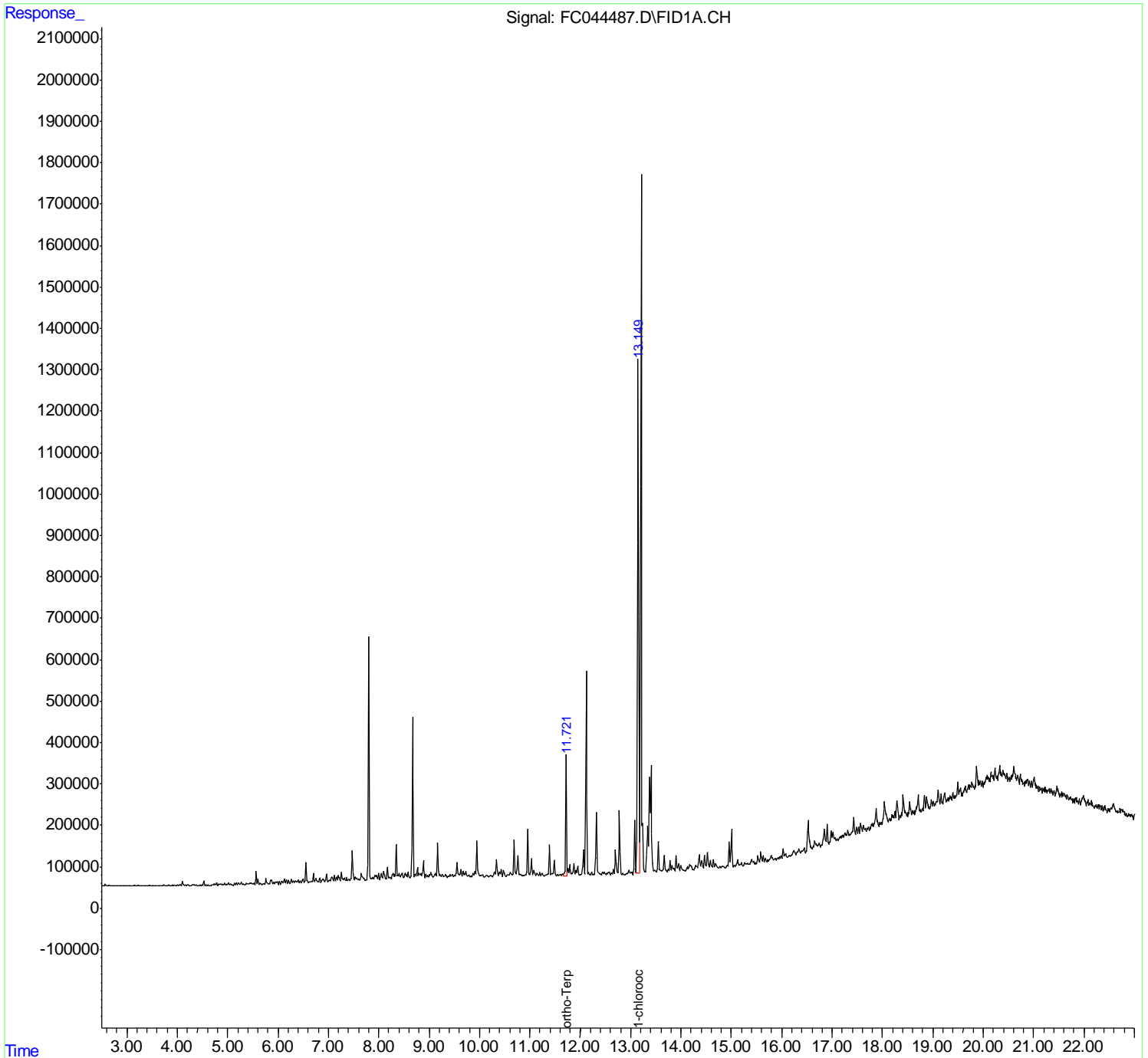
(f)=RT Delta > 1/2 Window

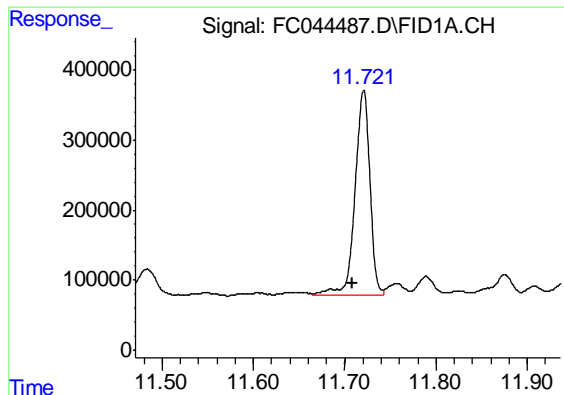
(m)=manual int.

Data Path : Z:\pestpcbsrv\HPCHEM1\FID_C\Data\FC111119AL\
Data File : FC044487.D
Signal(s) : FID1A.CH
Acq On : 11 Nov 2019 22:17
Operator : DD\AJ
Sample : K5673-04
Misc :
ALS Vial : 17 Sample Multiplier: 1

Integration File: sample.E
Quant Time: Nov 12 02:19:05 2019
Quant Method : Z:\pestpcbsrv\HPCHEM1\FID_C\Method\Alaphatic EPH 102219.M
Quant Title : GC Extractables
QLast Update : Tue Oct 22 12:36:58 2019
Response via : Initial Calibration
Integrator: ChemStation 6890 Scale Mode: Large solvent peaks clipped

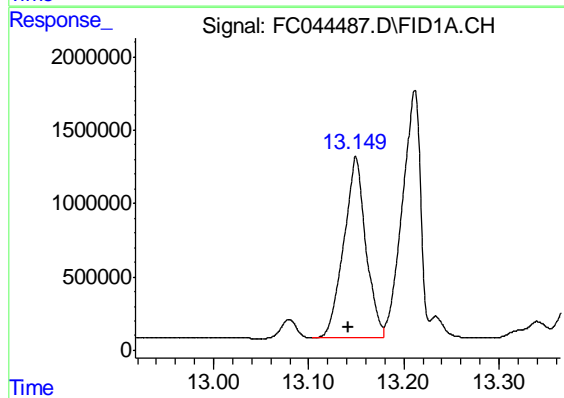
Volume Inj. : 1 ul
Signal Phase : Rxi-1ms
Signal Info : 20M x 0.18mm x 0.18um





#9 ortho-Terphenyl (SURR)

R.T.: 11.721 min
Delta R.T.: 0.012 min
Response: 3320705
Conc: 22.78 ug/ml



#12 1-chlorooctadecane (SURR)

R.T.: 13.150 min
Delta R.T.: 0.008 min
Response: 19870738
Conc: 177.71 ug/ml