

Data Path : Z:\pestpcbsrv\HPCHEM1\FID\_C\Data\FC111121AL\  
 Data File : FC056740.D  
 Signal(s) : FID1A.CH  
 Acq On : 11 Nov 2021 23:46  
 Operator : AJ\MA  
 Sample : M4619-01DL 5X  
 Misc :  
 ALS Vial : 16 Sample Multiplier: 1

Integration File: autoint1.e  
 Quant Time: Nov 12 03:01:20 2021  
 Quant Method : Z:\pestpcbsrv\HPCHEM1\FID\_C\Method\Aliphatic EPH 102121.M  
 Quant Title : GC Extractables  
 QLast Update : Thu Oct 21 01:00:25 2021  
 Response via : Initial Calibration  
 Integrator: ChemStation 6890 Scale Mode: Large solvent peaks clipped

Volume Inj. : 1 ul  
 Signal Phase : Rxi-1ms  
 Signal Info : 20M x 0.18mm x 0.18um

Compound	R.T.	Response	Conc Units
-----			
System Monitoring Compounds			
9) S ortho-Terphenyl (SURR)	11.612	895607	7.233 ug/ml
Spiked Amount	50.000	Recovery =	14.47%
12) S 1-chlorooctadecane (S...	13.044	672093	6.985 ug/ml
Spiked Amount	50.000	Recovery =	13.97%
Target Compounds			
2) T n-Decane (C10)	4.438	196671	1.826 ug/ml
3) T A~Naphthalene (C11.7)	6.032	303523	2.490 ug/ml
4) T n-Dodecane (C12)	6.458	1819291	16.503 ug/ml
5) T A~2-methylnaphthalene...	7.092	391965	3.201 ug/ml
6) T n-Tetradecane (C14)	8.252	1754273	15.626 ug/ml
7) T n-Hexadecane (C16)	9.851	509917	4.485 ug/ml
20) T n-Hexatriacontane (C36)	20.083	283951	3.469 ug/ml
-----			

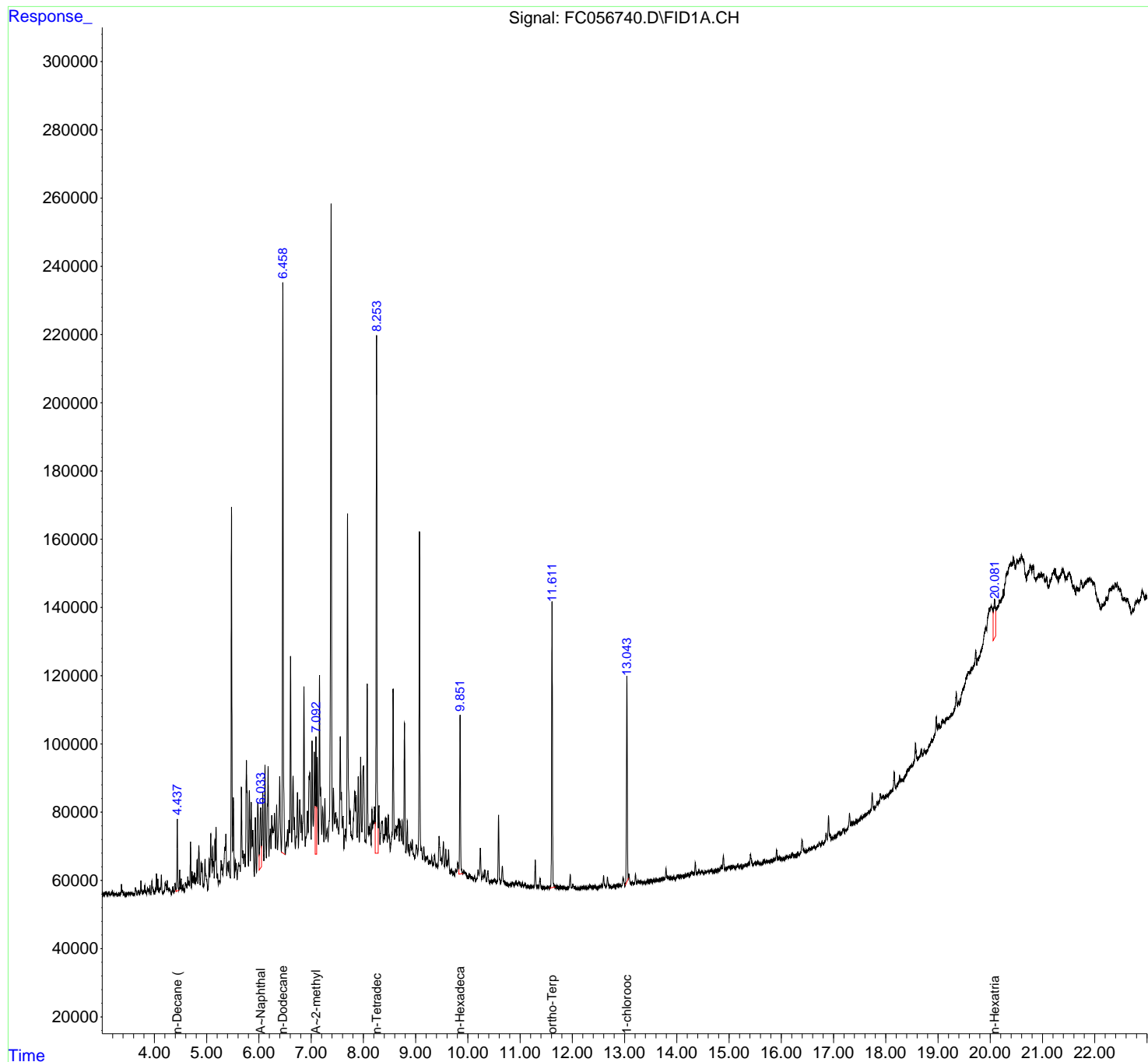
(f)=RT Delta > 1/2 Window

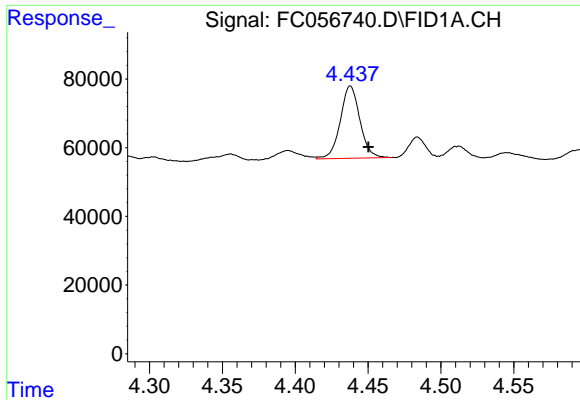
(m)=manual int.

Data Path : Z:\pestpcbsrv\HPCHEM1\FID\_C\Data\FC111121AL\  
Data File : FC056740.D  
Signal(s) : FID1A.CH  
Acq On : 11 Nov 2021 23:46  
Operator : AJ\MA  
Sample : M4619-01DL 5X  
Misc :  
ALS Vial : 16 Sample Multiplier: 1

Integration File: autoint1.e  
Quant Time: Nov 12 03:01:20 2021  
Quant Method : Z:\pestpcbsrv\HPCHEM1\FID\_C\Method\Aliphatic EPH 102121.M  
Quant Title : GC Extractables  
QLast Update : Thu Oct 21 01:00:25 2021  
Response via : Initial Calibration  
Integrator: ChemStation 6890 Scale Mode: Large solvent peaks clipped

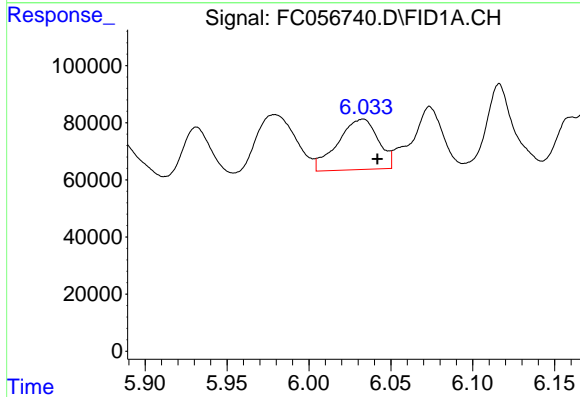
Volume Inj. : 1 ul  
Signal Phase : Rxi-1ms  
Signal Info : 20M x 0.18mm x 0.18um





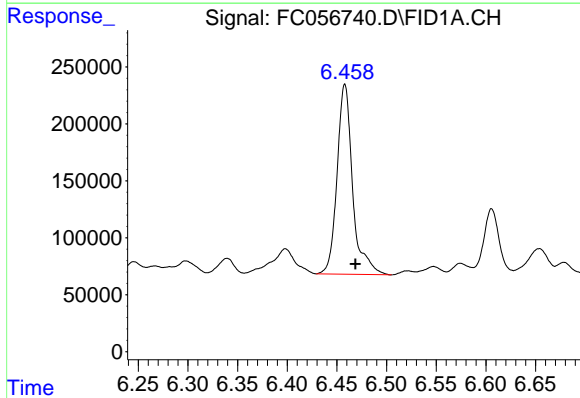
#2 n-Decane (C10)

R.T.: 4.438 min  
Delta R.T.: -0.012 min  
Response: 196671  
Conc: 1.83 ug/ml



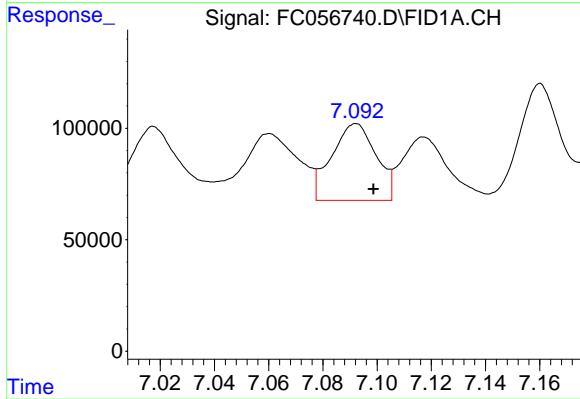
#3 A~Naphthalene (C11.7)

R.T.: 6.032 min  
Delta R.T.: -0.010 min  
Response: 303523  
Conc: 2.49 ug/ml



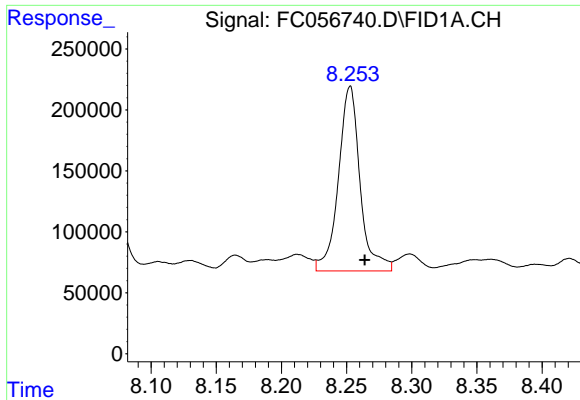
#4 n-Dodecane (C12)

R.T.: 6.458 min  
Delta R.T.: -0.011 min  
Response: 1819291  
Conc: 16.50 ug/ml

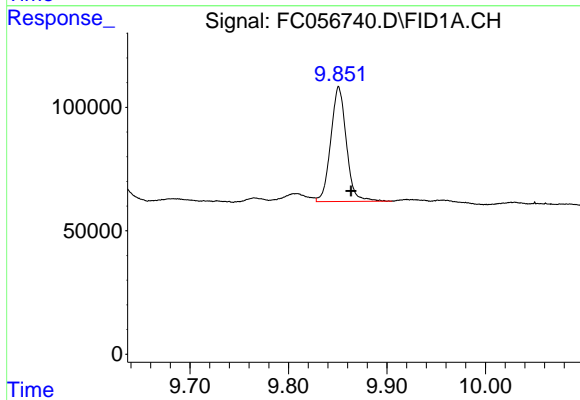


#5 A~2-methylnaphthalene (C12.89)

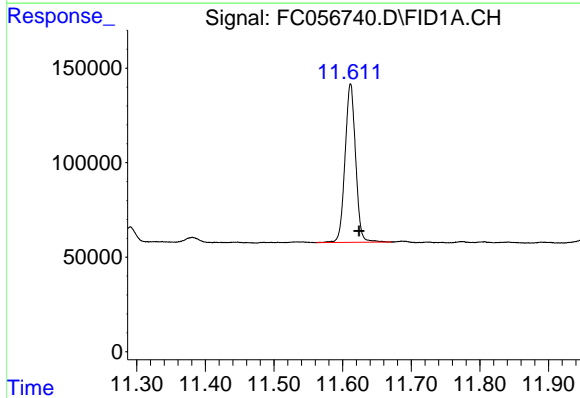
R.T.: 7.092 min  
Delta R.T.: -0.007 min  
Response: 391965  
Conc: 3.20 ug/ml



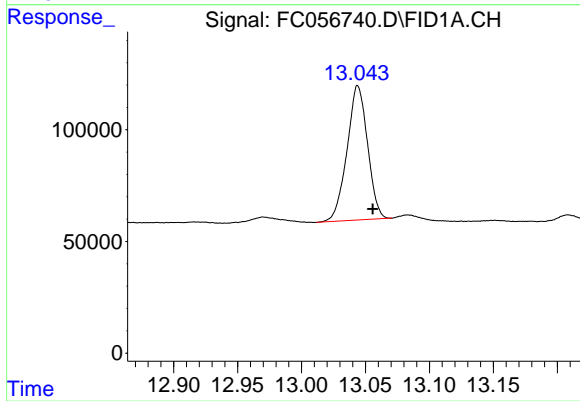
#6 n-Tetradecane (C14)  
R.T.: 8.252 min  
Delta R.T.: -0.011 min  
Response: 1754273  
Conc: 15.63 ug/ml



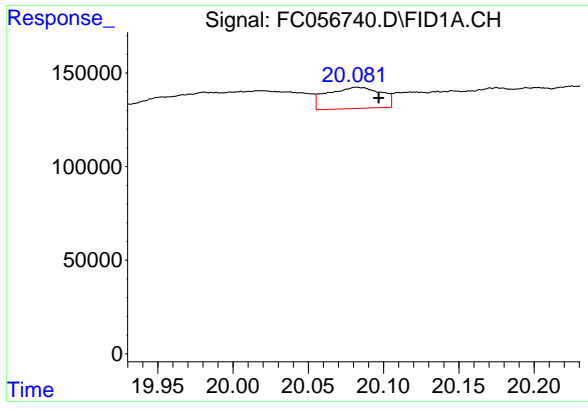
#7 n-Hexadecane (C16)  
R.T.: 9.851 min  
Delta R.T.: -0.013 min  
Response: 509917  
Conc: 4.49 ug/ml



#9 ortho-Terphenyl (SURR)  
R.T.: 11.612 min  
Delta R.T.: -0.013 min  
Response: 895607  
Conc: 7.23 ug/ml



#12 1-chlorooctadecane (SURR)  
R.T.: 13.044 min  
Delta R.T.: -0.011 min  
Response: 672093  
Conc: 6.98 ug/ml



#20 n-Hexatriacontane (C36)

R.T.: 20.083 min  
Delta R.T.: -0.014 min  
Response: 283951  
Conc: 3.47 ug/ml