

Data Path : Z:\pestpcbsrv\HPCHEM1\FID_C\Data\FC111121AL\
 Data File : FC056740.D
 Signal(s) : FID1A.CH
 Acq On : 11 Nov 2021 23:46
 Operator : AJ\MA
 Sample : M4619-01DL 5X
 Misc :
 ALS Vial : 16 Sample Multiplier: 1

Integration File: sample.E
 Quant Time: Nov 12 05:56:48 2021
 Quant Method : Z:\pestpcbsrv\HPCHEM1\FID_C\Method\Aliphatic EPH 102121.M
 Quant Title : GC Extractables
 QLast Update : Thu Oct 21 01:00:25 2021
 Response via : Initial Calibration
 Integrator: ChemStation 6890 Scale Mode: Large solvent peaks clipped

Volume Inj. : 1 ul
 Signal Phase : Rxi-1ms
 Signal Info : 20M x 0.18mm x 0.18um

Compound	R.T.	Response	Conc Units

System Monitoring Compounds			
9) S ortho-Terphenyl (SURR)	11.612	895607	7.233 ug/ml
Spiked Amount	50.000	Recovery	= 14.47%
12) S 1-chlorooctadecane (S...	13.044	672093	6.985 ug/ml
Spiked Amount	50.000	Recovery	= 13.97%

Target Compounds

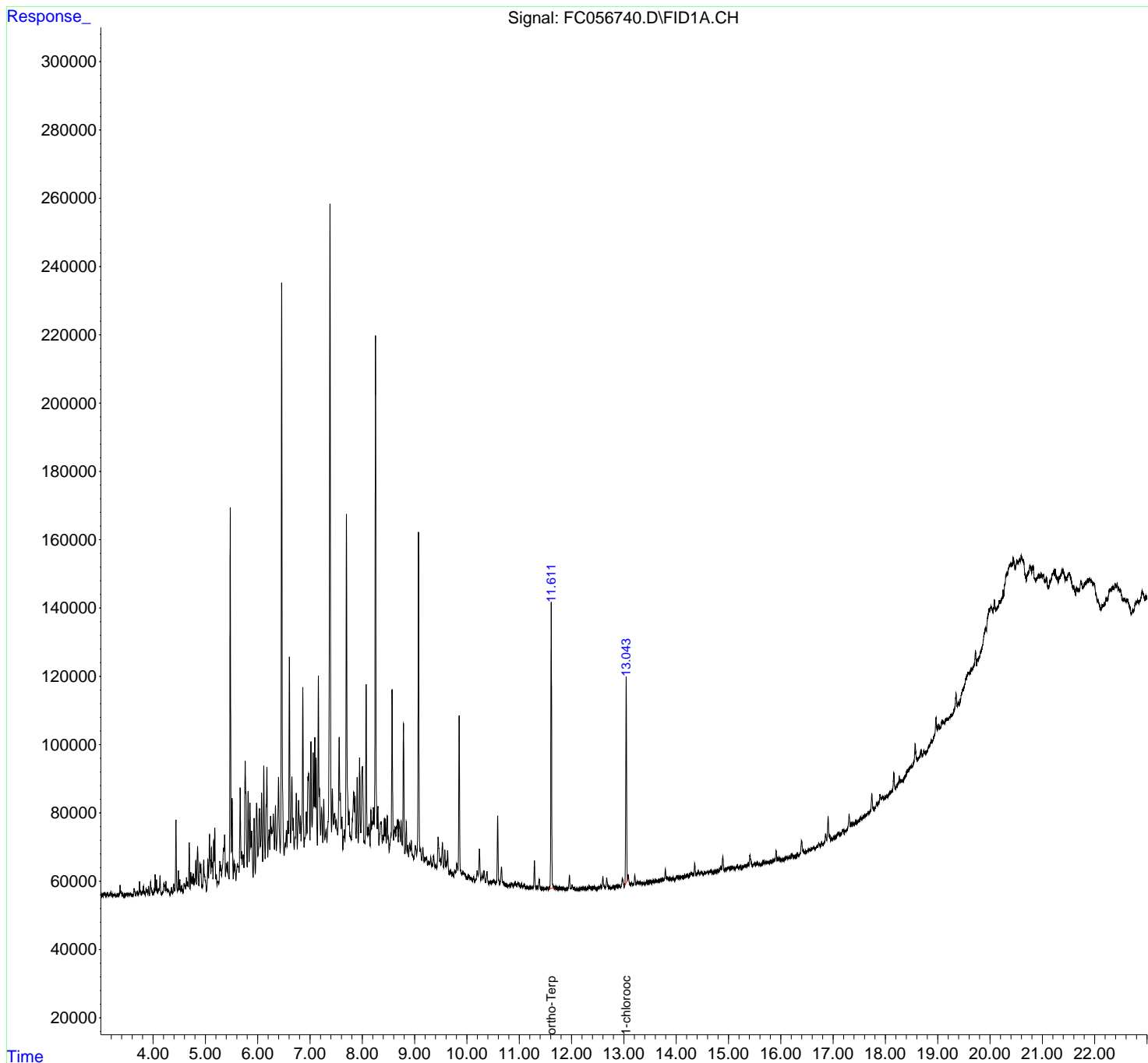
(f)=RT Delta > 1/2 Window

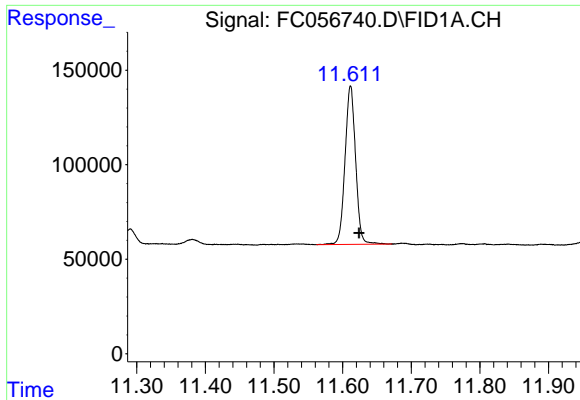
(m)=manual int.

Data Path : Z:\pestpcbsrv\HPCHEM1\FID_C\Data\FC111121AL\
Data File : FC056740.D
Signal(s) : FID1A.CH
Acq On : 11 Nov 2021 23:46
Operator : AJ\MA
Sample : M4619-01DL 5X
Misc :
ALS Vial : 16 Sample Multiplier: 1

Integration File: sample.E
Quant Time: Nov 12 05:56:48 2021
Quant Method : Z:\pestpcbsrv\HPCHEM1\FID_C\Method\Aliphatic EPH 102121.M
Quant Title : GC Extractables
QLast Update : Thu Oct 21 01:00:25 2021
Response via : Initial Calibration
Integrator: ChemStation 6890 Scale Mode: Large solvent peaks clipped

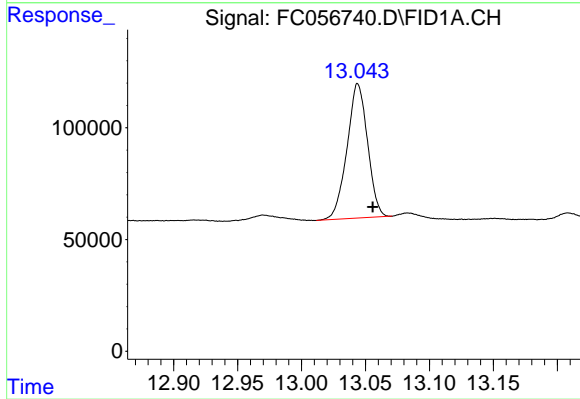
Volume Inj. : 1 ul
Signal Phase : Rxi-1ms
Signal Info : 20M x 0.18mm x 0.18um





#9 ortho-Terphenyl (SURR)

R.T.: 11.612 min
Delta R.T.: -0.013 min
Response: 895607
Conc: 7.23 ug/ml



#12 1-chlorooctadecane (SURR)

R.T.: 13.044 min
Delta R.T.: -0.011 min
Response: 672093
Conc: 6.98 ug/ml