

Data Path : Z:\pestpcbsrv\HPCHEM1\FID_C\Data\FC111218AL\
 Data File : FC037624.D
 Signal(s) : FID1A.CH
 Acq On : 12 Nov 2018 13:51
 Operator : AJ\SJ
 Sample : J5864-01
 Misc :
 ALS Vial : 7 Sample Multiplier: 1

Integration File: autoint1.e
 Quant Time: Nov 13 00:10:42 2018
 Quant Method : Z:\pestpcbsrv\HPCHEM1\FID_C\Method\Alaphatic EPH 103018.M
 Quant Title : GC Extractables
 QLast Update : Wed Oct 31 05:57:18 2018
 Response via : Initial Calibration
 Integrator: ChemStation 6890 Scale Mode: Large solvent peaks clipped

Volume Inj. : 1 ul
 Signal Phase : Rxi-1ms
 Signal Info : 20M x 0.18mm x 0.18um

Compound	R.T.	Response	Conc Units

System Monitoring Compounds			
9) S ortho-Terphenyl (SURR)	11.311	4509712	31.054 ug/ml
Spiked Amount	50.000	Recovery	= 62.11%
12) S 1-chlorooctadecane (S...	12.754	3482112	31.079 ug/ml
Spiked Amount	50.000	Recovery	= 62.16%
Target Compounds			
6) T n-Tetradecane (C14)	8.043	409589	3.112 ug/ml
16) T n-Octacosane (C28)	16.565	68383	0.539 ug/ml
17) T n-Tricontane (C30)	17.449	90597	0.657 ug/ml
21) T n-Octatriacontane (C38)	20.496	187348	1.395 ug/ml

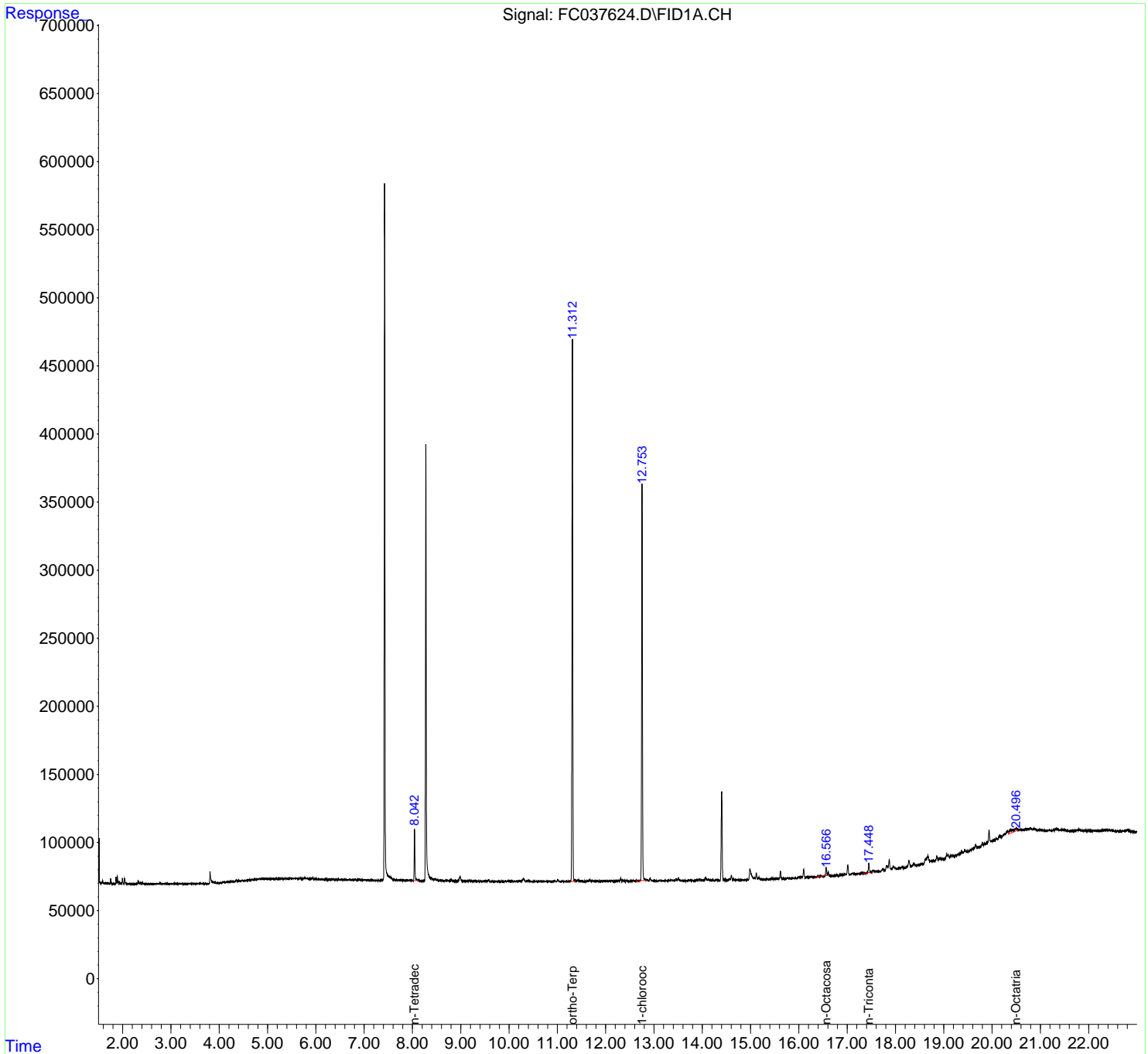
(f)=RT Delta > 1/2 Window

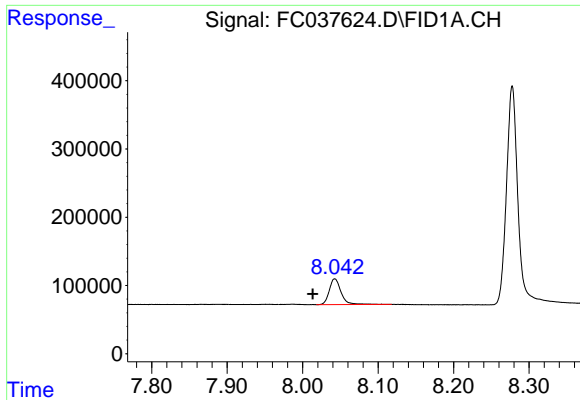
(m)=manual int.

Data Path : Z:\pestpcbsrv\HPCHEM1\FID_C\Data\FC111218AL\
Data File : FC037624.D
Signal(s) : FID1A.CH
Acq On : 12 Nov 2018 13:51
Operator : AJ\SJ
Sample : J5864-01
Misc :
ALS Vial : 7 Sample Multiplier: 1

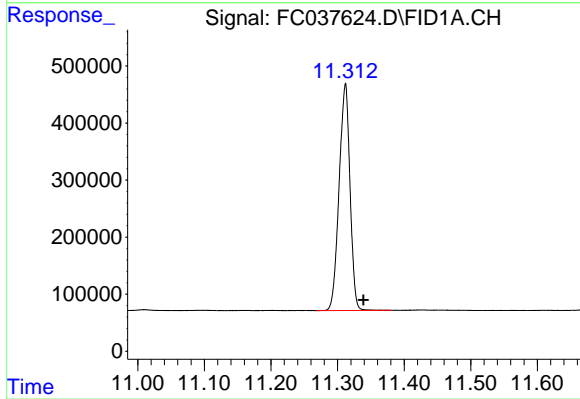
Integration File: autoint1.e
Quant Time: Nov 13 00:10:42 2018
Quant Method : Z:\pestpcbsrv\HPCHEM1\FID_C\Method\Aliphatic EPH 103018.M
Quant Title : GC Extractables
QLast Update : Wed Oct 31 05:57:18 2018
Response via : Initial Calibration
Integrator: ChemStation 6890 Scale Mode: Large solvent peaks clipped

Volume Inj. : 1 ul
Signal Phase : Rxi-1ms
Signal Info : 20M x 0.18mm x 0.18um

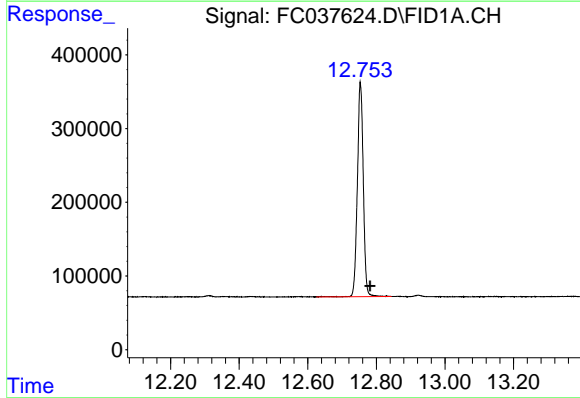




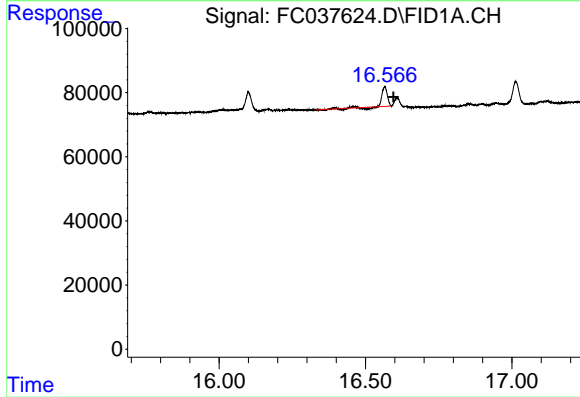
#6 n-Tetradecane (C14)
 R.T.: 8.043 min
 Delta R.T.: 0.029 min
 Response: 409589
 Conc: 3.11 ug/ml



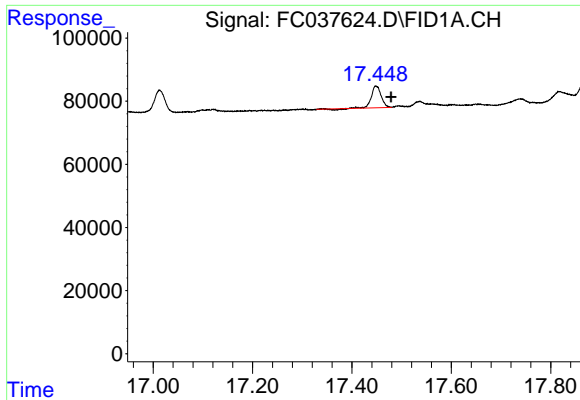
#9 ortho-Terphenyl (SURR)
 R.T.: 11.311 min
 Delta R.T.: -0.027 min
 Response: 4509712
 Conc: 31.05 ug/ml



#12 1-chlorooctadecane (SURR)
 R.T.: 12.754 min
 Delta R.T.: -0.028 min
 Response: 3482112
 Conc: 31.08 ug/ml



#16 n-Octacosane (C28)
 R.T.: 16.565 min
 Delta R.T.: -0.030 min
 Response: 68383
 Conc: 0.54 ug/ml



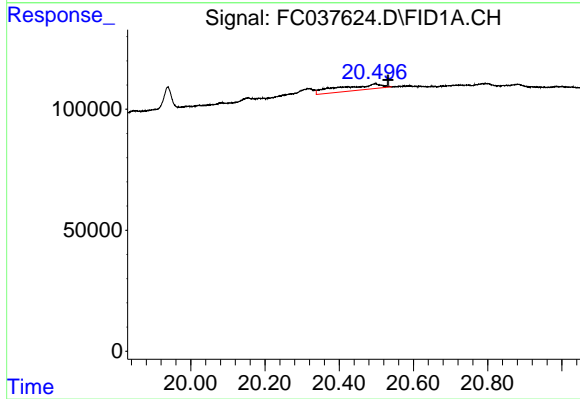
#17 n-Tricontane (C30)

R.T.: 17.449 min

Delta R.T.: -0.030 min

Response: 90597

Conc: 0.66 ug/ml



#21 n-Octatriacontane (C38)

R.T.: 20.496 min

Delta R.T.: -0.036 min

Response: 187348

Conc: 1.39 ug/ml