

Data Path : Z:\pestpcbsrv\HPCHEM1\FID_C\Data\F111319AL\
 Data File : FC044529.D
 Signal(s) : FID1A.CH
 Acq On : 13 Nov 2019 20:35
 Operator : DD\AJ
 Sample : 20 PPM ALIPHATIC HC STD
 Misc :
 ALS Vial : 2 Sample Multiplier: 1

Instrument :
 FID_C
 ClientSampled :

Manual Integrations
 APPROVED

Ankita
 11/15/2019 8:12:03 AM

Integration File: autoint1.e
 Quant Time: Nov 14 01:11:48 2019
 Quant Method : Z:\pestpcbsrv\HPCHEM1\FID_C\Method\Alaphatic EPH 102219.M
 Quant Title : GC Extractables
 QLast Update : Tue Oct 22 12:36:58 2019
 Response via : Initial Calibration
 Integrator: ChemStation 6890 Scale Mode: Large solvent peaks clipped

Volume Inj. : 1 ul
 Signal Phase : Rxi-1ms
 Signal Info : 20M x 0.18mm x 0.18um

Compound	R.T.	Response	Conc Units

System Monitoring Compounds			
9) S ortho-Terphenyl (SURR)	11.719	2429409	16.667 ug/ml
Spiked Amount	50.000	Recovery	= 33.33%
12) S 1-chlorooctadecane (S...	13.148	1852952	16.572 ug/ml
Spiked Amount	50.000	Recovery	= 33.14%
Target Compounds			
1) T n-Nonane (C9)	3.454	2396833	21.758 ug/ml
2) T n-Decane (C10)	4.530	2430640	21.884 ug/ml
3) T A~Naphthalene (C11.7)	6.132	2669998	21.459 ug/ml
4) T n-Dodecane (C12)	6.554	2437273	21.672 ug/ml
5) T A~2-methylnaphthalene...	7.190	2661477	21.106 ug/ml
6) T n-Tetradecane (C14)	8.349	2415466	21.350 ug/ml
7) T n-Hexadecane (C16)	9.951	2366413	20.710 ug/ml
8) T n-Octadecane (C18)	11.391	2319430	20.258 ug/ml
10) T n-Eicosane (C20)	12.701	2214143	19.414 ug/ml
11) T n-Heneicosane (C21)	13.313	2164433	18.870 ug/ml
13) T n-Docosane (C22)	13.901	2117421	18.646 ug/ml
14) T n-Tetracosane (C24)	15.003	2092471	18.504 ug/ml
15) T n-Hexacosane (C26)	16.026	2010377	18.170 ug/ml
16) T n-Octacosane (C28)	16.976	2028551	18.726 ug/ml
17) T n-Tricontane (C30)	17.863	2052618	19.395 ug/ml
18) T n-Dotriacontane (C32)	18.697	2020074	20.058 ug/ml
19) T n-Tetratriacontane (C34)	19.480	2001645	21.347 ug/ml
20) T n-Hexatriacontane (C36)	20.218	1952557	22.492 ug/mlm
21) T n-Octatriacontane (C38)	20.986	1795136	22.261 ug/mlm
22) T n-Tetracontane (C40)	21.953	1927024	22.797 ug/ml

(f)=RT Delta > 1/2 Window

(m)=manual int.

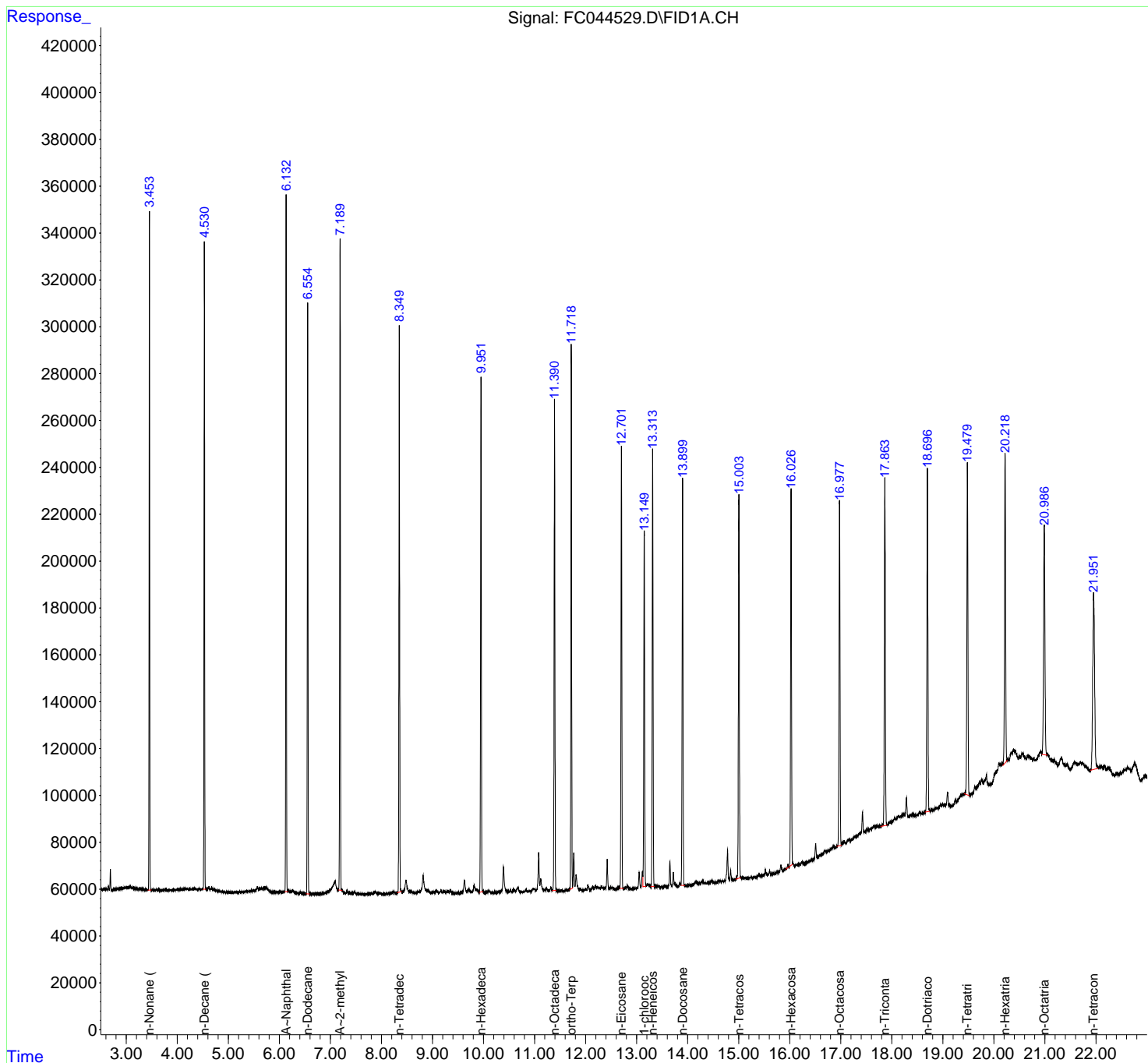
Data Path : Z:\pestpcbsrv\HPCHEM1\FID_C\Data\FC111319AL\
 Data File : FC044529.D
 Signal(s) : FID1A.CH
 Acq On : 13 Nov 2019 20:35
 Operator : DD\AJ
 Sample : 20 PPM ALIPHATIC HC STD
 Misc :
 ALS Vial : 2 Sample Multiplier: 1

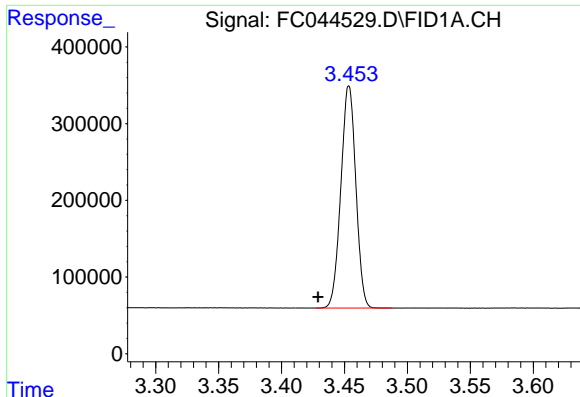
Instrument :
 FID_C
 ClientSampled :

Manual Integrations
APPROVED
 Ankita
 11/15/2019 8:12:03 AM

Integration File: autoint1.e
 Quant Time: Nov 14 01:11:48 2019
 Quant Method : Z:\pestpcbsrv\HPCHEM1\FID_C\Method\Aliphatic EPH 102219.M
 Quant Title : GC Extractables
 QLast Update : Tue Oct 22 12:36:58 2019
 Response via : Initial Calibration
 Integrator: ChemStation 6890 Scale Mode: Large solvent peaks clipped

Volume Inj. : 1 ul
 Signal Phase : Rxi-1ms
 Signal Info : 20M x 0.18mm x 0.18um





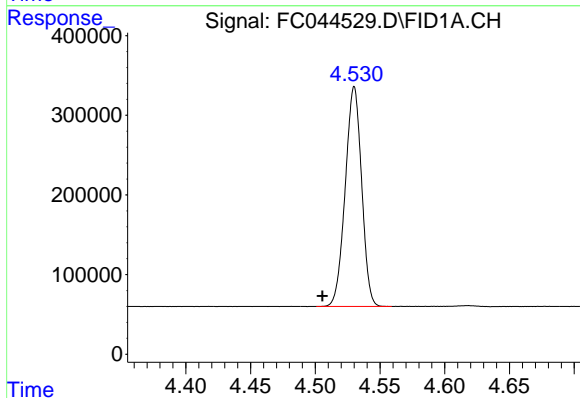
#1 n-Nonane (C9)

R.T.: 3.454 min
 Delta R.T.: 0.025 min
 Response: 2396833
 Conc: 21.76 ug/ml

Instrument :
 FID_C
 ClientSampled :

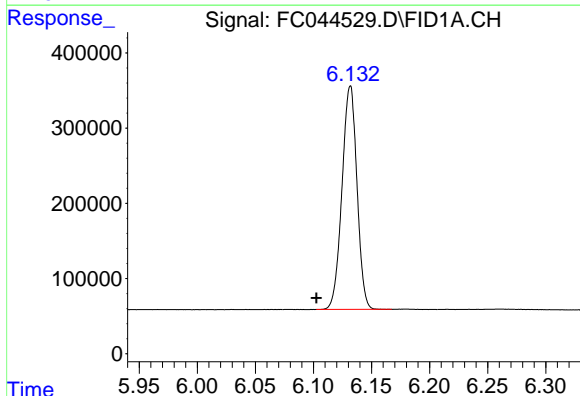
Manual Integrations
 APPROVED

Ankita
 11/15/2019 8:12:03 AM



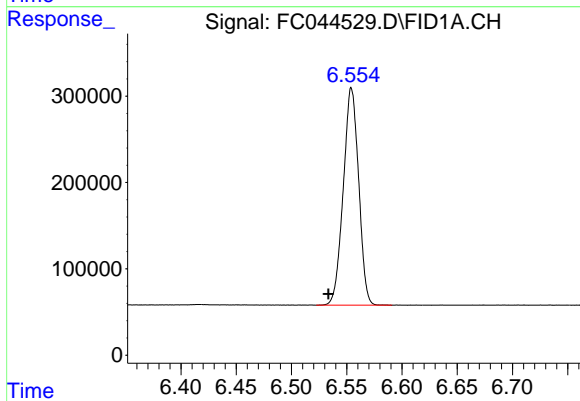
#2 n-Decane (C10)

R.T.: 4.530 min
 Delta R.T.: 0.024 min
 Response: 2430640
 Conc: 21.88 ug/ml



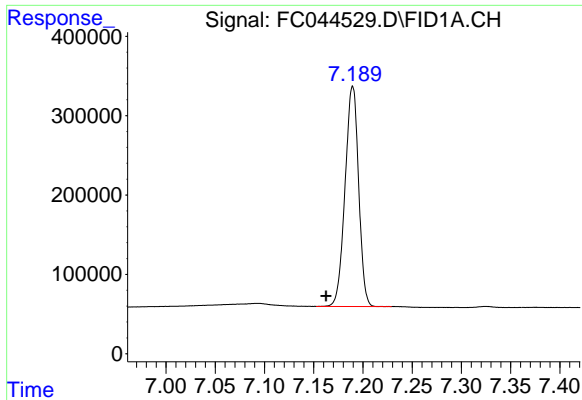
#3 A~Naphthalene (C11.7)

R.T.: 6.132 min
 Delta R.T.: 0.029 min
 Response: 2669998
 Conc: 21.46 ug/ml



#4 n-Dodecane (C12)

R.T.: 6.554 min
 Delta R.T.: 0.021 min
 Response: 2437273
 Conc: 21.67 ug/ml



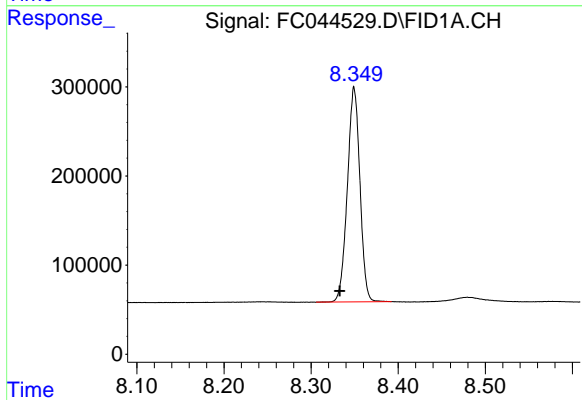
#5 A~2-methylnaphthalene (C12.89)

R.T.: 7.190 min
Delta R.T.: 0.027 min
Response: 2661477
Conc: 21.11 ug/ml

Instrument :
FID_C
ClientSampled :

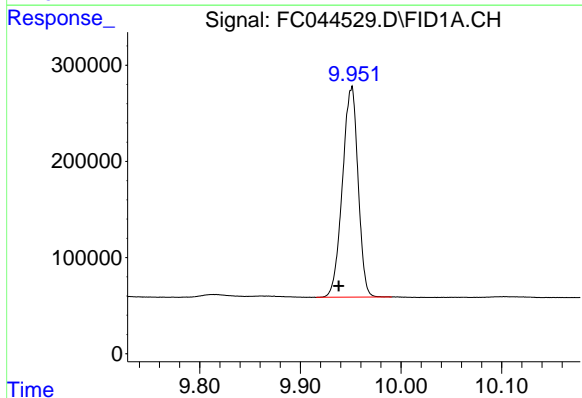
Manual Integrations
APPROVED

Ankita
11/15/2019 8:12:03 AM



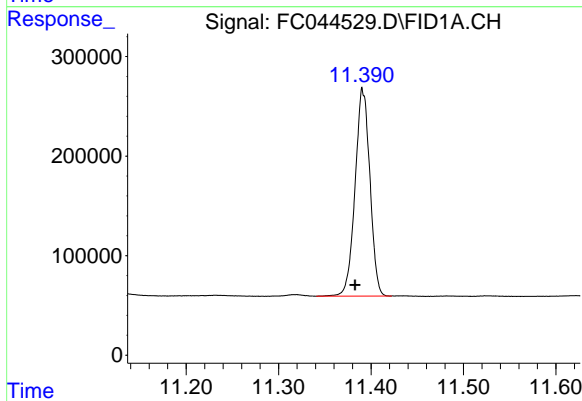
#6 n-Tetradecane (C14)

R.T.: 8.349 min
Delta R.T.: 0.017 min
Response: 2415466
Conc: 21.35 ug/ml



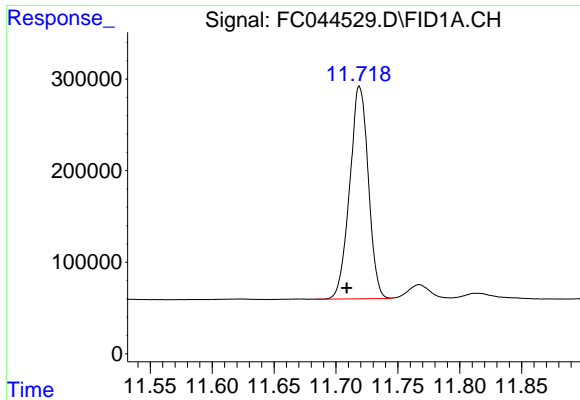
#7 n-Hexadecane (C16)

R.T.: 9.951 min
Delta R.T.: 0.013 min
Response: 2366413
Conc: 20.71 ug/ml



#8 n-Octadecane (C18)

R.T.: 11.391 min
Delta R.T.: 0.008 min
Response: 2319430
Conc: 20.26 ug/ml

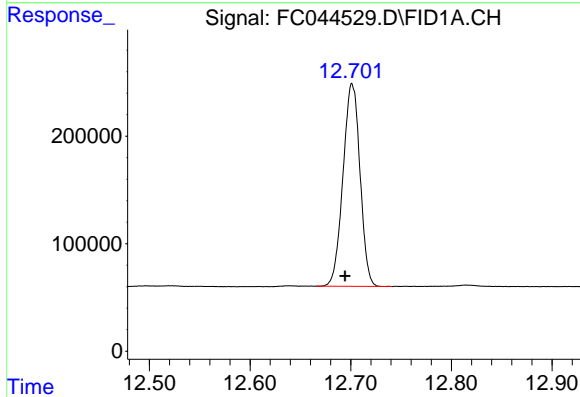


#9 ortho-Terphenyl (SURR)

R.T.: 11.719 min
 Delta R.T.: 0.010 min
 Response: 2429409
 Conc: 16.67 ug/ml

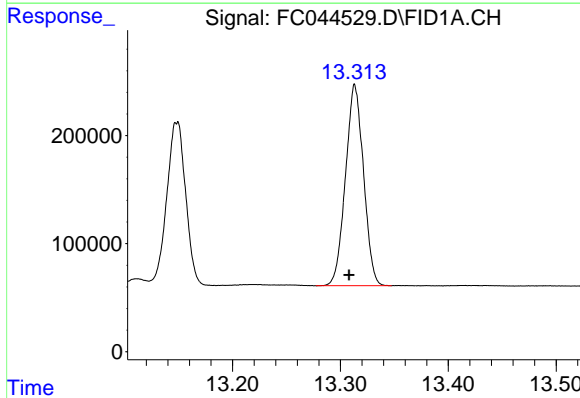
Instrument :
 FID_C
 ClientSampled :

Manual Integrations
 APPROVED
 Ankita
 11/15/2019 8:12:03 AM



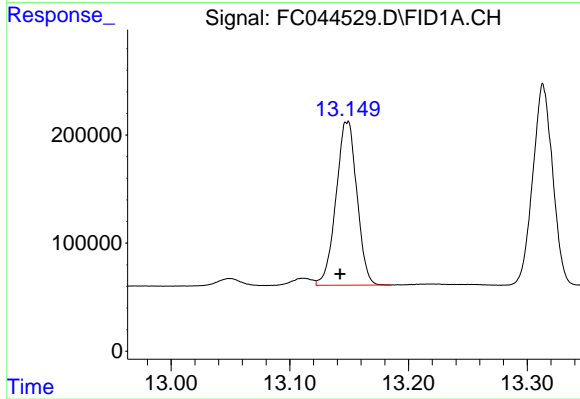
#10 n-Eicosane (C20)

R.T.: 12.701 min
 Delta R.T.: 0.007 min
 Response: 2214143
 Conc: 19.41 ug/ml



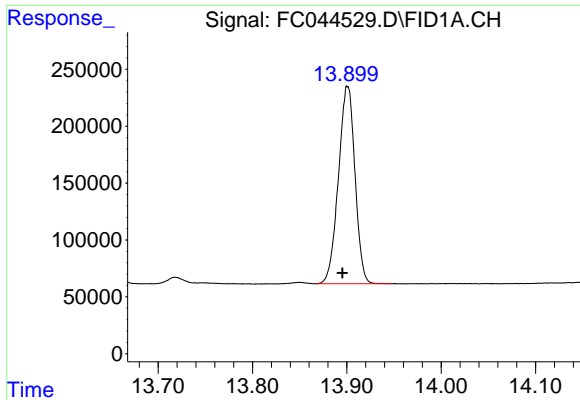
#11 n-Heneicosane (C21)

R.T.: 13.313 min
 Delta R.T.: 0.005 min
 Response: 2164433
 Conc: 18.87 ug/ml



#12 1-chlorooctadecane (SURR)

R.T.: 13.148 min
 Delta R.T.: 0.006 min
 Response: 1852952
 Conc: 16.57 ug/ml



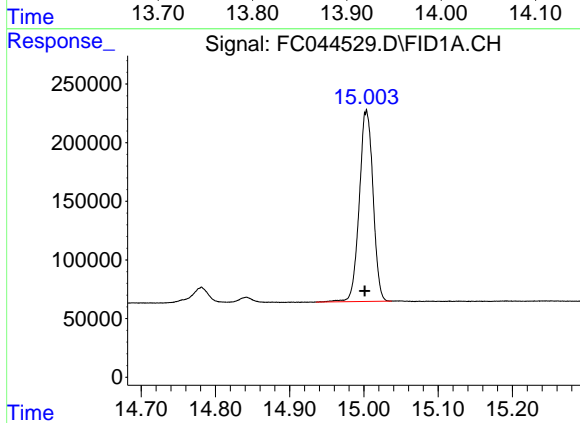
#13 n-Docosane (C22)

R.T.: 13.901 min
 Delta R.T.: 0.005 min
 Response: 2117421
 Conc: 18.65 ug/ml

Instrument :
 FID_C
 ClientSampled :

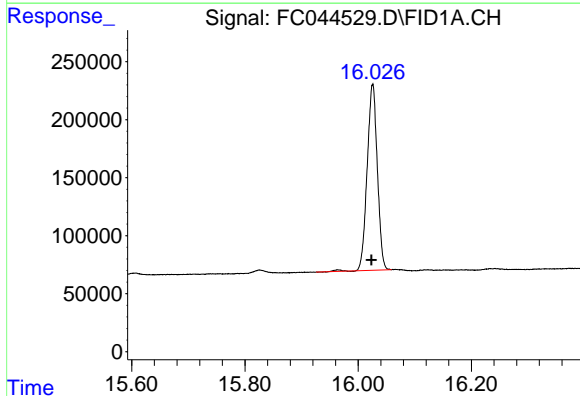
Manual Integrations
 APPROVED

Ankita
 11/15/2019 8:12:03 AM



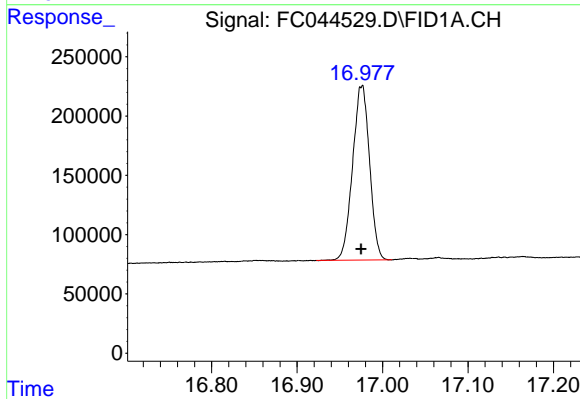
#14 n-Tetracosane (C24)

R.T.: 15.003 min
 Delta R.T.: 0.002 min
 Response: 2092471
 Conc: 18.50 ug/ml



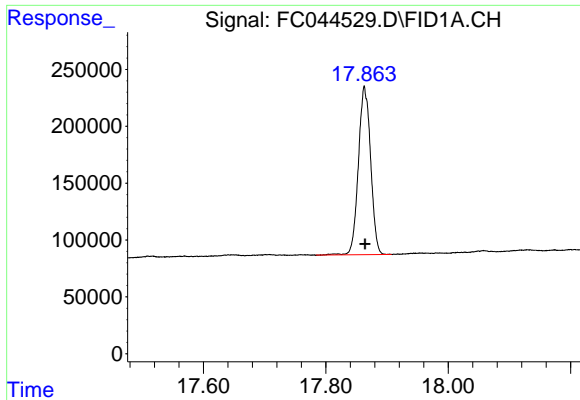
#15 n-Hexacosane (C26)

R.T.: 16.026 min
 Delta R.T.: 0.002 min
 Response: 2010377
 Conc: 18.17 ug/ml



#16 n-Octacosane (C28)

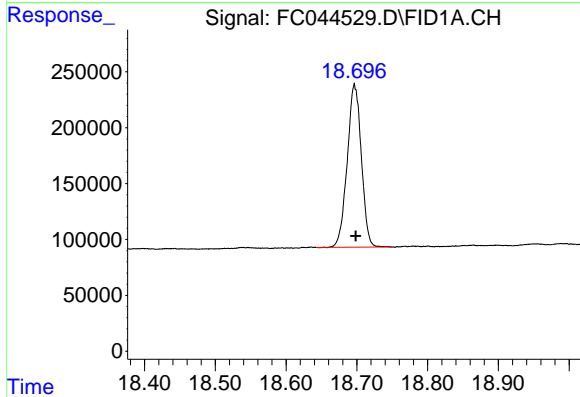
R.T.: 16.976 min
 Delta R.T.: 0.001 min
 Response: 2028551
 Conc: 18.73 ug/ml



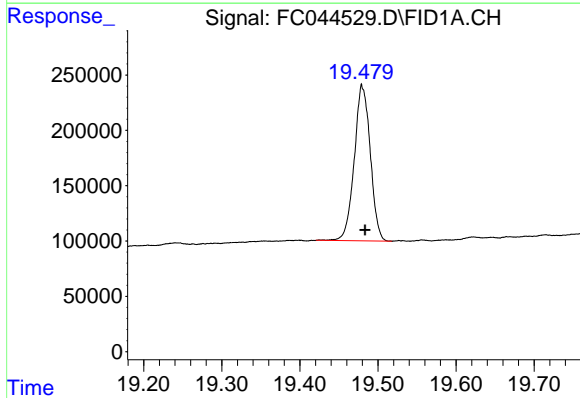
#17 n-Tricontane (C30)
R.T.: 17.863 min
Delta R.T.: -0.001 min
Response: 2052618
Conc: 19.39 ug/ml

Instrument :
FID_C
ClientSampled :

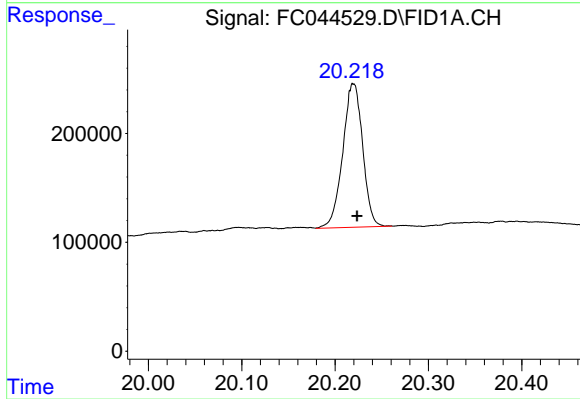
Manual Integrations
APPROVED
Ankita
11/15/2019 8:12:03 AM



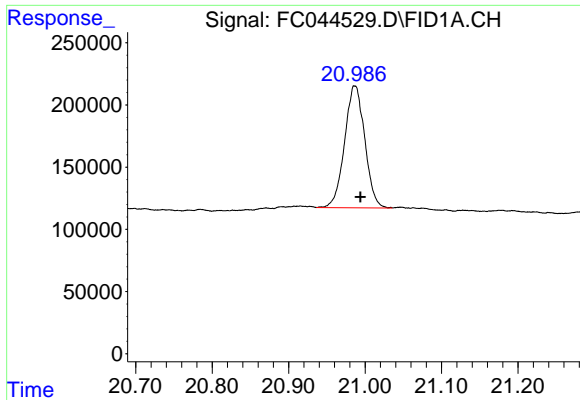
#18 n-Dotriacontane (C32)
R.T.: 18.697 min
Delta R.T.: -0.002 min
Response: 2020074
Conc: 20.06 ug/ml



#19 n-Tetratriacontane (C34)
R.T.: 19.480 min
Delta R.T.: -0.004 min
Response: 2001645
Conc: 21.35 ug/ml



#20 n-Hexatriacontane (C36)
R.T.: 20.218 min
Delta R.T.: -0.005 min
Response: 1952557
Conc: 22.49 ug/ml m

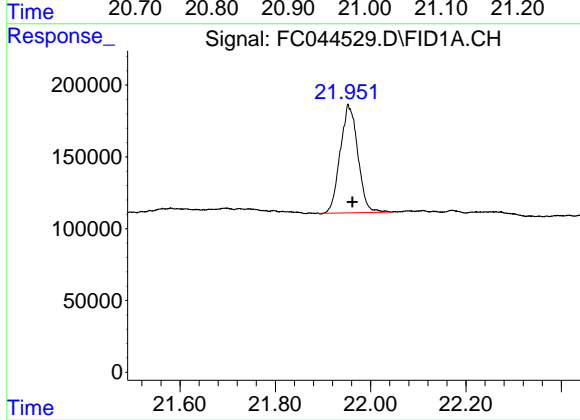


#21 n-Octatriacontane (C38)

R.T.: 20.986 min
Delta R.T.: -0.008 min
Response: 1795136
Conc: 22.26 ug/ml m

Instrument :
FID_C
ClientSampled :

Manual Integrations
APPROVED
Ankita
11/15/2019 8:12:03 AM



#22 n-Tetracontane (C40)

R.T.: 21.953 min
Delta R.T.: -0.009 min
Response: 1927024
Conc: 22.80 ug/ml