

Data Path : Z:\pestpcbsrv\HPCHEM1\FID_C\Data\FC111419AL\
 Data File : FC044540.D
 Signal(s) : FID1A.CH
 Acq On : 14 Nov 2019 19:43
 Operator : DD\AJ
 Sample : K5832-02
 Misc :
 ALS Vial : 6 Sample Multiplier: 1

Integration File: sample.E
 Quant Time: Nov 15 02:22:13 2019
 Quant Method : Z:\pestpcbsrv\HPCHEM1\FID_C\Method\Alaphatic EPH 102219.M
 Quant Title : GC Extractables
 QLast Update : Tue Oct 22 12:36:58 2019
 Response via : Initial Calibration
 Integrator: ChemStation 6890 Scale Mode: Large solvent peaks clipped

Volume Inj. : 1 ul
 Signal Phase : Rxi-1ms
 Signal Info : 20M x 0.18mm x 0.18um

Compound	R.T.	Response	Conc Units

System Monitoring Compounds			
9) S ortho-Terphenyl (SURR)	11.720	5180124	35.538 ug/ml
Spiked Amount	50.000	Recovery	= 71.08%
12) S 1-chlorooctadecane (S...	13.149	4355533	38.953 ug/ml
Spiked Amount	50.000	Recovery	= 77.91%

Target Compounds

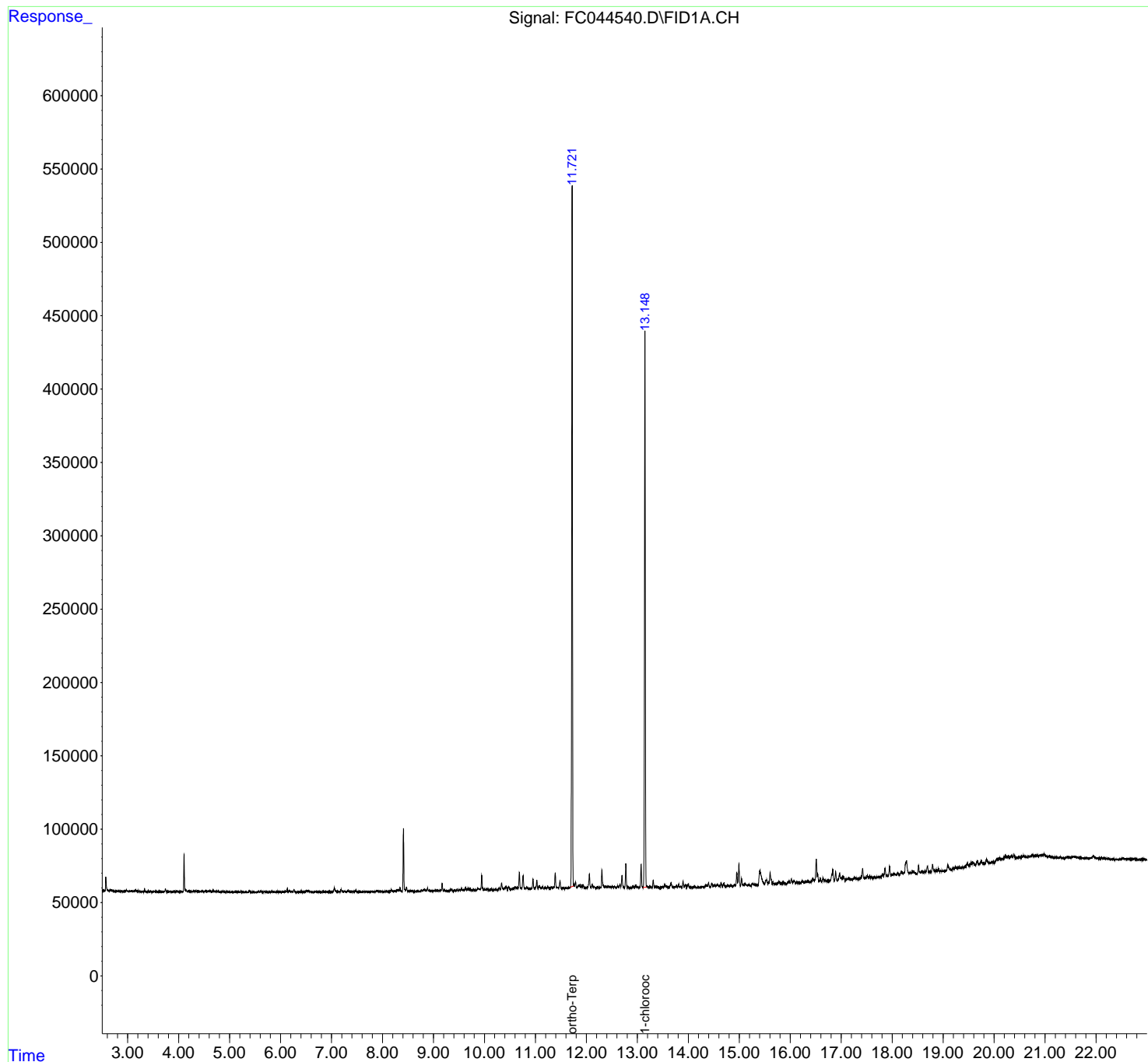
(f)=RT Delta > 1/2 Window

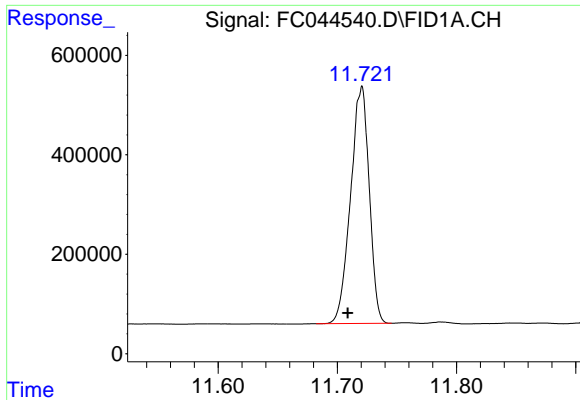
(m)=manual int.

Data Path : Z:\pestpcbsrv\HPCHEM1\FID_C\Data\FC111419AL\
Data File : FC044540.D
Signal(s) : FID1A.CH
Acq On : 14 Nov 2019 19:43
Operator : DD\AJ
Sample : K5832-02
Misc :
ALS Vial : 6 Sample Multiplier: 1

Integration File: sample.E
Quant Time: Nov 15 02:22:13 2019
Quant Method : Z:\pestpcbsrv\HPCHEM1\FID_C\Method\Aliphatic EPH 102219.M
Quant Title : GC Extractables
QLast Update : Tue Oct 22 12:36:58 2019
Response via : Initial Calibration
Integrator: ChemStation 6890 Scale Mode: Large solvent peaks clipped

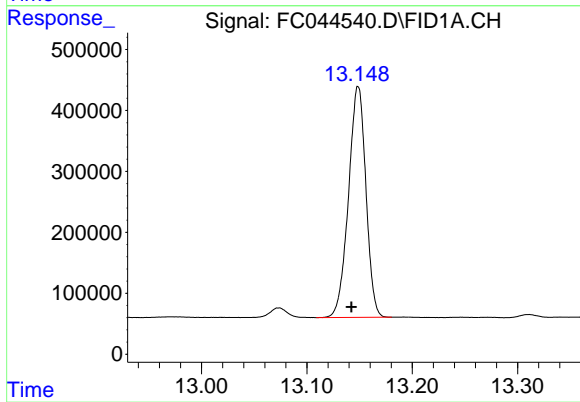
Volume Inj. : 1 ul
Signal Phase : Rxi-1ms
Signal Info : 20M x 0.18mm x 0.18um





#9 ortho-Terphenyl (SURR)

R.T.: 11.720 min
Delta R.T.: 0.012 min
Response: 5180124
Conc: 35.54 ug/ml



#12 1-chlorooctadecane (SURR)

R.T.: 13.149 min
Delta R.T.: 0.006 min
Response: 4355533
Conc: 38.95 ug/ml