

Data Path : Z:\pestpcbsrv\HPCHEM1\FID_C\Data\FC111621AL\
 Data File : FC056854.D
 Signal(s) : FID1A.CH
 Acq On : 17 Nov 2021 1:24
 Operator : AJ\MA
 Sample : M4695-06
 Misc :
 ALS Vial : 18 Sample Multiplier: 1

Integration File: autoint1.e
 Quant Time: Nov 17 04:53:37 2021
 Quant Method : Z:\pestpcbsrv\HPCHEM1\FID_C\Method\Aliphatic EPH 102121.M
 Quant Title : GC Extractables
 QLast Update : Thu Oct 21 01:00:25 2021
 Response via : Initial Calibration
 Integrator: ChemStation 6890 Scale Mode: Large solvent peaks clipped

Volume Inj. : 1 ul
 Signal Phase : Rxi-1ms
 Signal Info : 20M x 0.18mm x 0.18um

Compound	R.T.	Response	Conc Units

System Monitoring Compounds			
9) S ortho-Terphenyl (SURR)	11.608	3801709	30.704 ug/ml
Spiked Amount	50.000	Recovery	= 61.41%
12) S 1-chlorooctadecane (S...	13.041	3393311	35.265 ug/ml
Spiked Amount	50.000	Recovery	= 70.53%

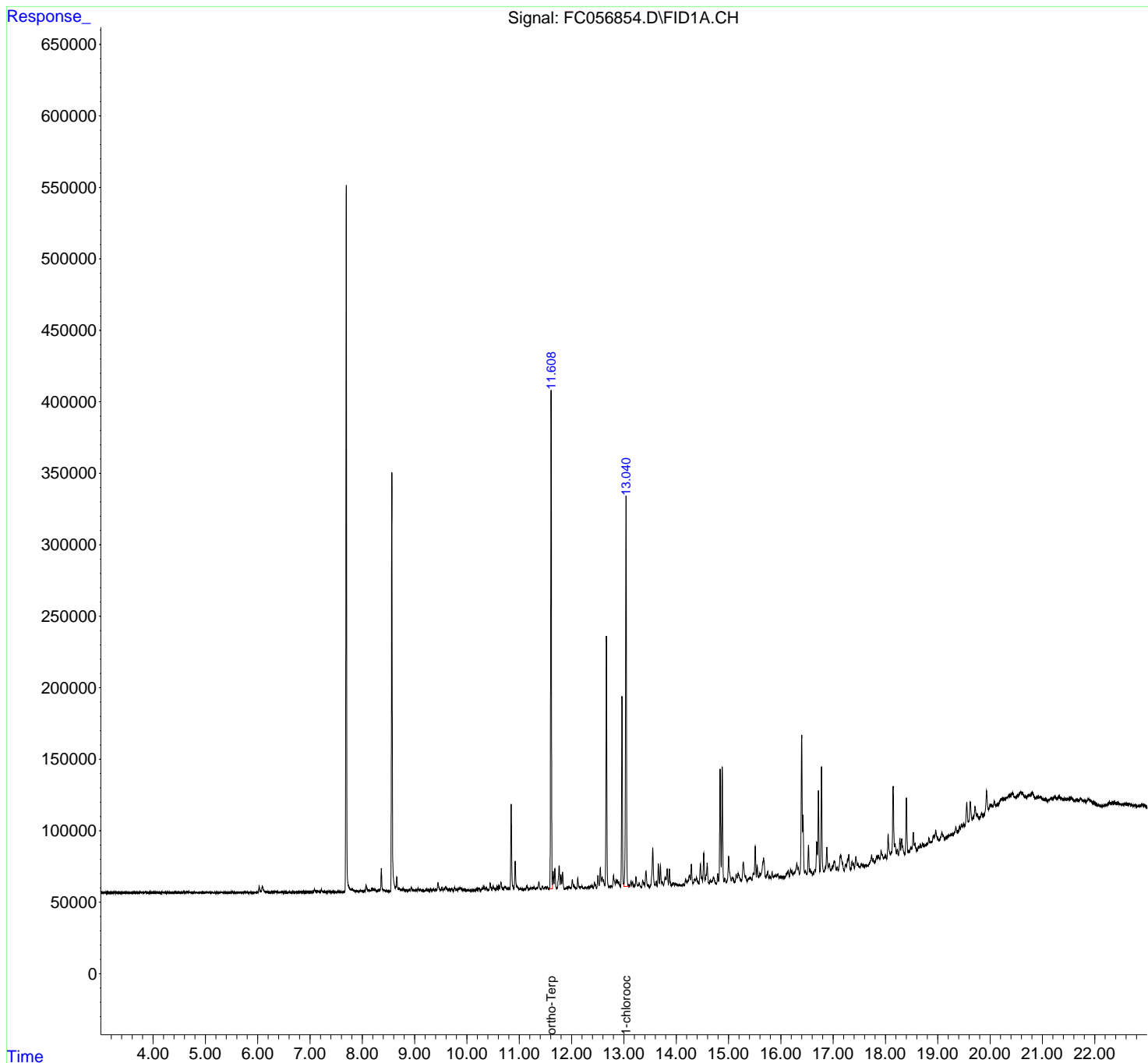
Target Compounds

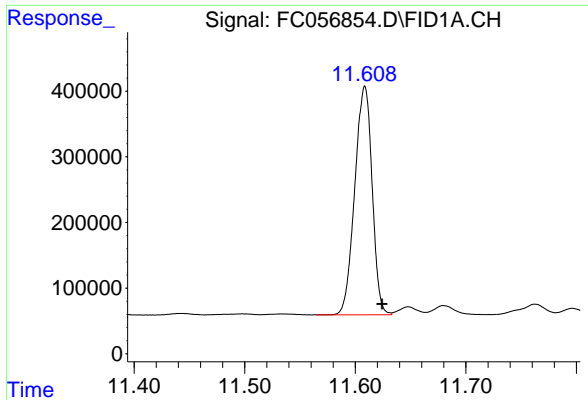
(f)=RT Delta > 1/2 Window (m)=manual int.

Data Path : Z:\pestpcbsrv\HPCHEM1\FID_C\Data\FC111621AL\
 Data File : FC056854.D
 Signal(s) : FID1A.CH
 Acq On : 17 Nov 2021 1:24
 Operator : AJ\MA
 Sample : M4695-06
 Misc :
 ALS Vial : 18 Sample Multiplier: 1

Integration File: autoint1.e
 Quant Time: Nov 17 04:53:37 2021
 Quant Method : Z:\pestpcbsrv\HPCHEM1\FID_C\Method\Aliphatic EPH 102121.M
 Quant Title : GC Extractables
 QLast Update : Thu Oct 21 01:00:25 2021
 Response via : Initial Calibration
 Integrator: ChemStation 6890 Scale Mode: Large solvent peaks clipped

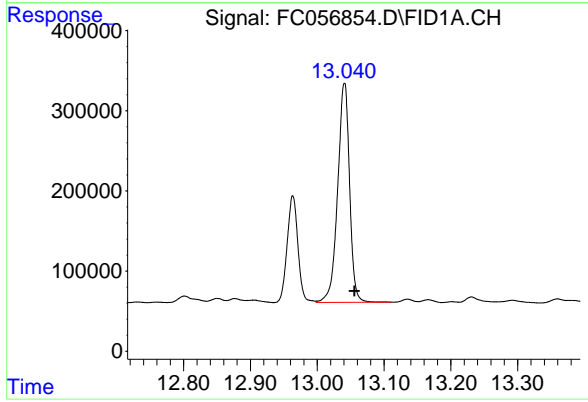
Volume Inj. : 1 ul
 Signal Phase : Rxi-1ms
 Signal Info : 20M x 0.18mm x 0.18um





#9 ortho-Terphenyl (SURR)

R.T.: 11.608 min
Delta R.T.: -0.016 min
Response: 3801709
Conc: 30.70 ug/ml



#12 1-chlorooctadecane (SURR)

R.T.: 13.041 min
Delta R.T.: -0.015 min
Response: 3393311
Conc: 35.26 ug/ml