

Data Path : Z:\pestpcbsrv\HPCHEM1\FID_C\Data\FC111720AL\
 Data File : FC050834.D
 Signal(s) : FID1A.CH
 Acq On : 17 Nov 2020 13:33
 Operator : DD\AJ
 Sample : L4757-01
 Misc :
 ALS Vial : 4 Sample Multiplier: 1

Integration File: autoint1.e
 Quant Time: Nov 17 14:01:22 2020
 Quant Method : Z:\pestpcbsrv\HPCHEM1\FID_C\Method\Alaphatic EPH 110220.M
 Quant Title : GC Extractables
 QLast Update : Tue Nov 03 02:36:40 2020
 Response via : Initial Calibration
 Integrator: ChemStation 6890 Scale Mode: Large solvent peaks clipped

Volume Inj. : 1 ul
 Signal Phase : Rxi-1ms
 Signal Info : 20M x 0.18mm x 0.18um

Compound	R.T.	Response	Conc Units

System Monitoring Compounds			
12) S 1-chlorooctadecane (S...	13.043	3232774	33.483 ug/ml
Spiked Amount	50.000	Recovery	= 66.97%

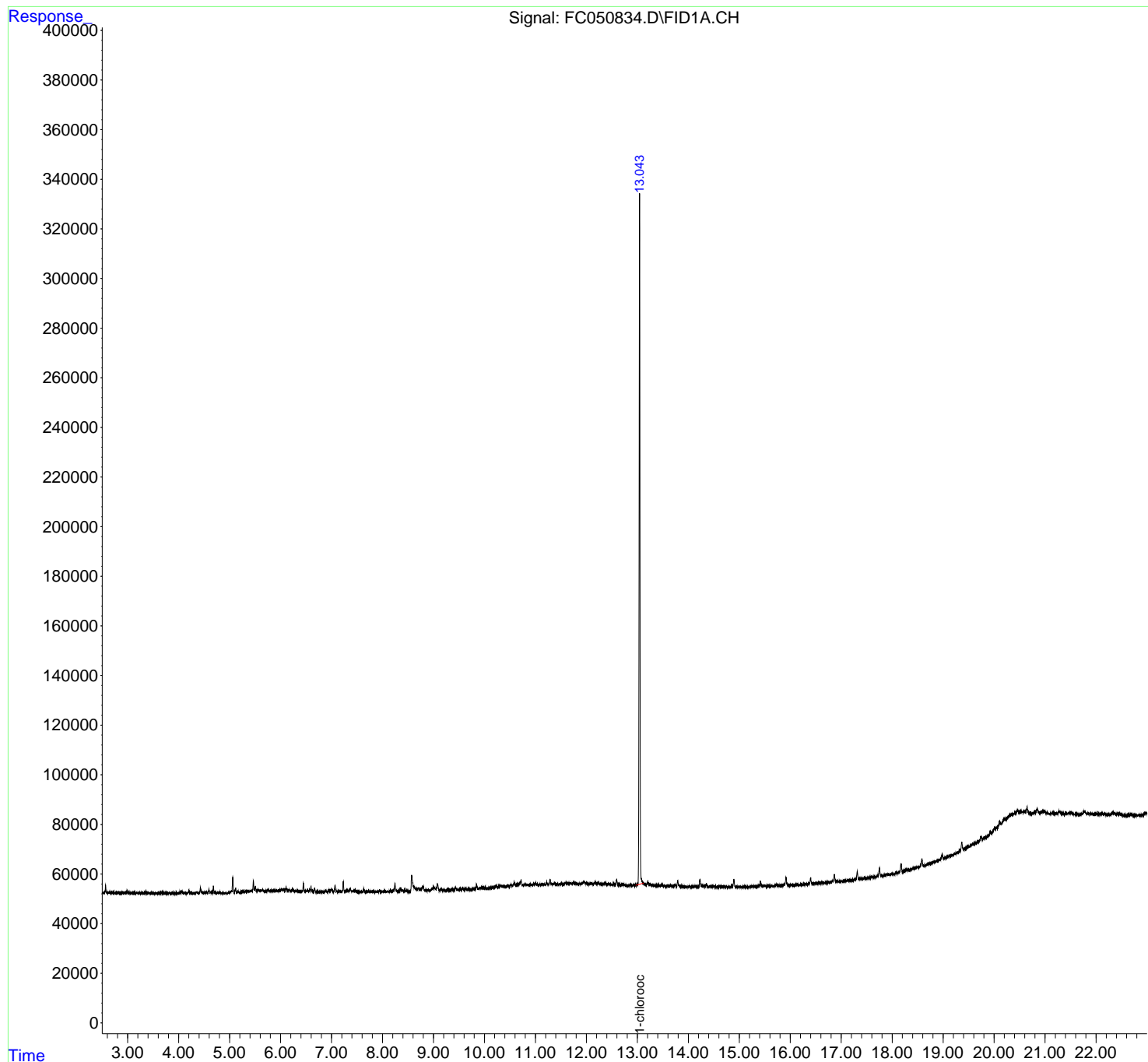
Target Compounds

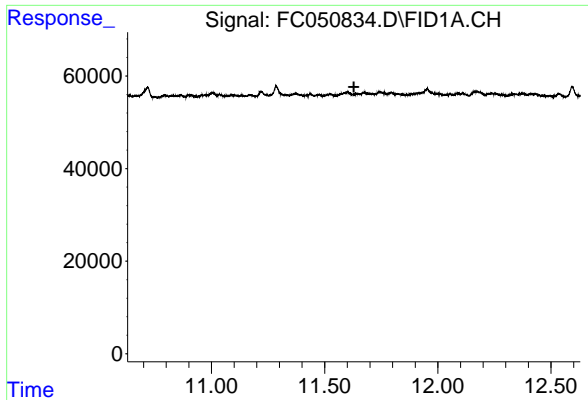
(f)=RT Delta > 1/2 Window (m)=manual int.

Data Path : Z:\pestpcbsrv\HPCHEM1\FID_C\Data\FC111720AL\
Data File : FC050834.D
Signal(s) : FID1A.CH
Acq On : 17 Nov 2020 13:33
Operator : DD\AJ
Sample : L4757-01
Misc :
ALS Vial : 4 Sample Multiplier: 1

Integration File: autoint1.e
Quant Time: Nov 17 14:01:22 2020
Quant Method : Z:\pestpcbsrv\HPCHEM1\FID_C\Method\Alaphatic EPH 110220.M
Quant Title : GC Extractables
QLast Update : Tue Nov 03 02:36:40 2020
Response via : Initial Calibration
Integrator: ChemStation 6890 Scale Mode: Large solvent peaks clipped

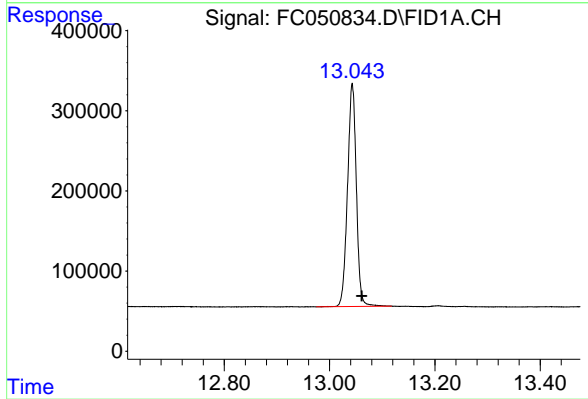
Volume Inj. : 1 ul
Signal Phase : Rxi-1ms
Signal Info : 20M x 0.18mm x 0.18um





#9 ortho-Terphenyl (SURR)

R.T.: 0.000 min
Exp R.T. : 11.629 min
Response: 0
Conc: N.D.



#12 1-chlorooctadecane (SURR)

R.T.: 13.043 min
Delta R.T.: -0.018 min
Response: 3232774
Conc: 33.48 ug/ml