

Data Path : Z:\pestpcbsrv\HPCHEM1\FID_C\Data\FC112019AL\
 Data File : FC044670.D
 Signal(s) : FID1A.CH
 Acq On : 21 Nov 2019 00:20
 Operator : DD\AJ
 Sample : 20 PPM ALIPHATIC HC STD
 Misc :
 ALS Vial : 2 Sample Multiplier: 1

Integration File: autoint1.e
 Quant Time: Nov 21 00:56:25 2019
 Quant Method : Z:\pestpcbsrv\HPCHEM1\FID_C\Method\Alaphatic EPH 102219.M
 Quant Title : GC Extractables
 QLast Update : Tue Oct 22 12:36:58 2019
 Response via : Initial Calibration
 Integrator: ChemStation 6890 Scale Mode: Large solvent peaks clipped

Volume Inj. : 1 ul
 Signal Phase : Rxi-1ms
 Signal Info : 20M x 0.18mm x 0.18um

Compound	R.T.	Response	Conc Units

System Monitoring Compounds			
9) S ortho-Terphenyl (SURR)	11.717	2446712	16.786 ug/ml
Spiked Amount	50.000	Recovery	= 33.57%
12) S 1-chlorooctadecane (S...	13.145	1819571	16.273 ug/ml
Spiked Amount	50.000	Recovery	= 32.55%
Target Compounds			
1) T n-Nonane (C9)	3.455	2323691	21.094 ug/ml
2) T n-Decane (C10)	4.530	2380340	21.431 ug/ml
3) T A~Naphthalene (C11.7)	6.131	2600437	20.900 ug/ml
4) T n-Dodecane (C12)	6.554	2384779	21.205 ug/ml
5) T A~2-methylnaphthalene...	7.188	2596957	20.594 ug/ml
6) T n-Tetradecane (C14)	8.349	2359464	20.855 ug/ml
7) T n-Hexadecane (C16)	9.949	2326140	20.358 ug/ml
8) T n-Octadecane (C18)	11.390	2276055	19.879 ug/ml
10) T n-Eicosane (C20)	12.698	2200238	19.292 ug/ml
11) T n-Heneicosane (C21)	13.310	2177142	18.981 ug/ml
13) T n-Docosane (C22)	13.895	2130225	18.759 ug/ml
14) T n-Tetracosane (C24)	14.999	2081328	18.405 ug/ml
15) T n-Hexacosane (C26)	16.019	2009734	18.165 ug/ml
16) T n-Octacosane (C28)	16.969	2003389	18.494 ug/ml
17) T n-Tricontane (C30)	17.856	2039469	19.270 ug/ml
18) T n-Dotriacontane (C32)	18.690	2016391	20.022 ug/ml
19) T n-Tetratriacontane (C34)	19.471	1986313	21.184 ug/ml
20) T n-Hexatriacontane (C36)	20.212	1928743	22.218 ug/ml
21) T n-Octatriacontane (C38)	20.978	1841444	22.835 ug/ml
22) T n-Tetracontane (C40)	21.939	1867811	22.097 ug/ml

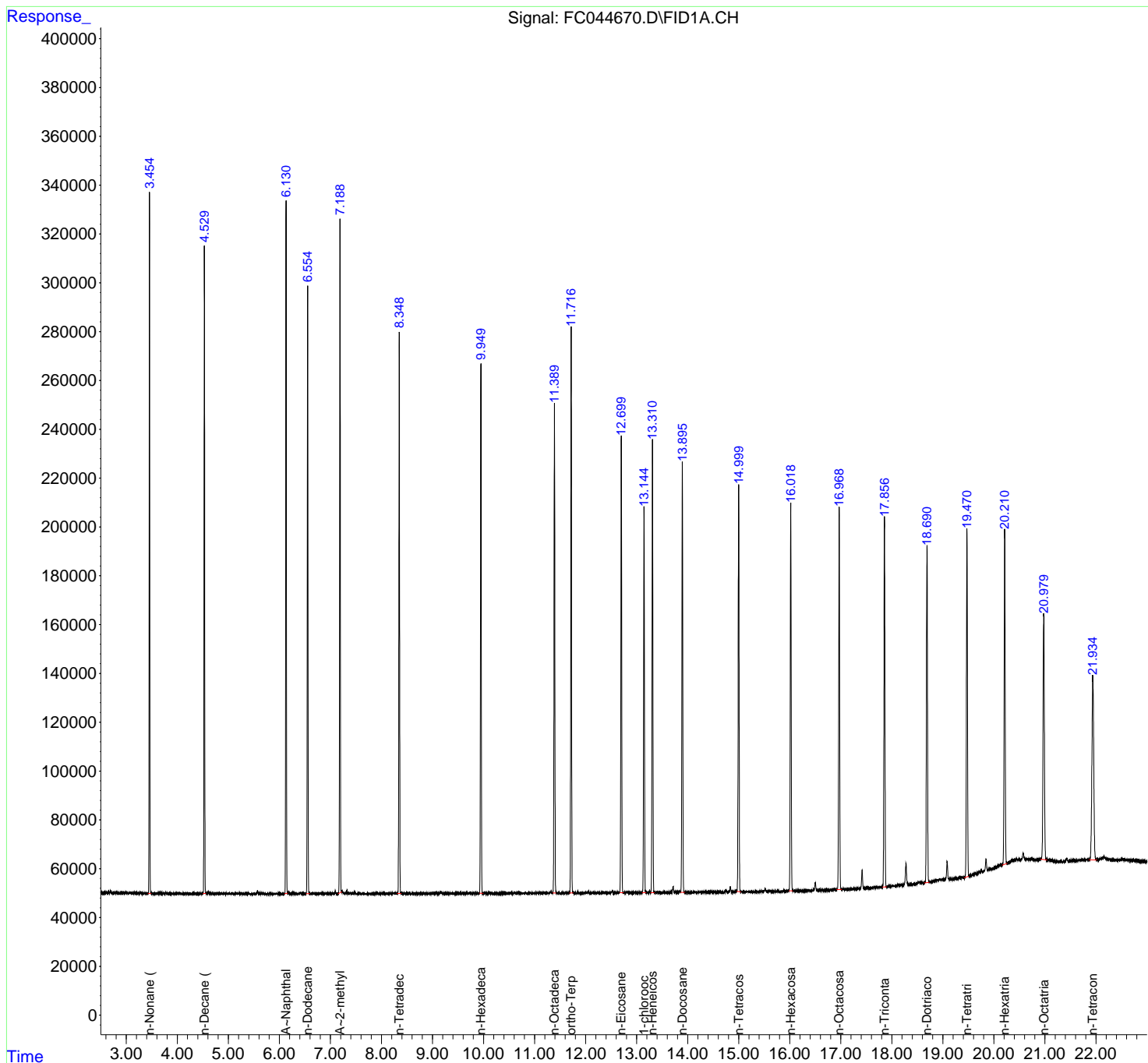
(f)=RT Delta > 1/2 Window

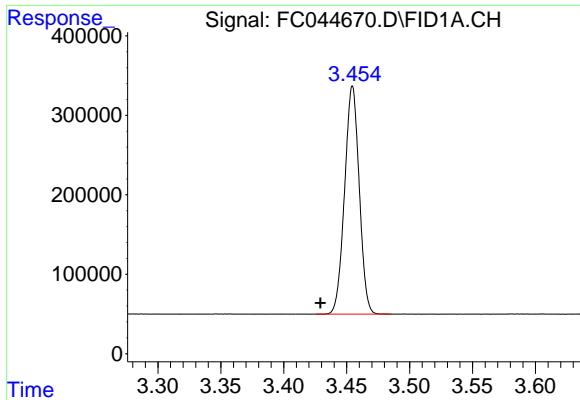
(m)=manual int.

Data Path : Z:\pestpcbsrv\HPCHEM1\FID_C\Data\FC112019AL\
 Data File : FC044670.D
 Signal(s) : FID1A.CH
 Acq On : 21 Nov 2019 00:20
 Operator : DD\AJ
 Sample : 20 PPM ALIPHATIC HC STD
 Misc :
 ALS Vial : 2 Sample Multiplier: 1

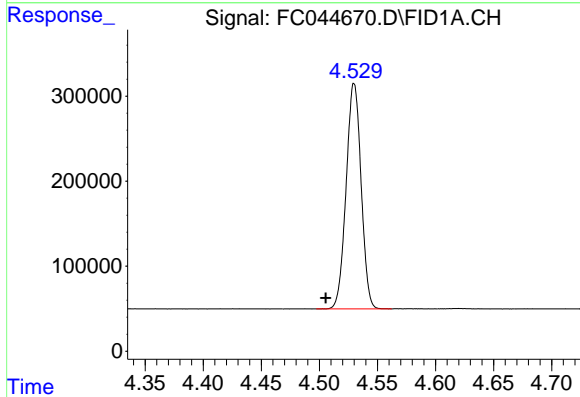
Integration File: autoint1.e
 Quant Time: Nov 21 00:56:25 2019
 Quant Method : Z:\pestpcbsrv\HPCHEM1\FID_C\Method\Aliphatic EPH 102219.M
 Quant Title : GC Extractables
 QLast Update : Tue Oct 22 12:36:58 2019
 Response via : Initial Calibration
 Integrator: ChemStation 6890 Scale Mode: Large solvent peaks clipped

Volume Inj. : 1 ul
 Signal Phase : Rxi-1ms
 Signal Info : 20M x 0.18mm x 0.18um

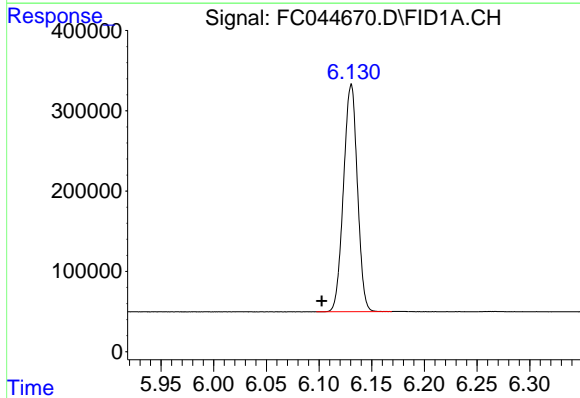




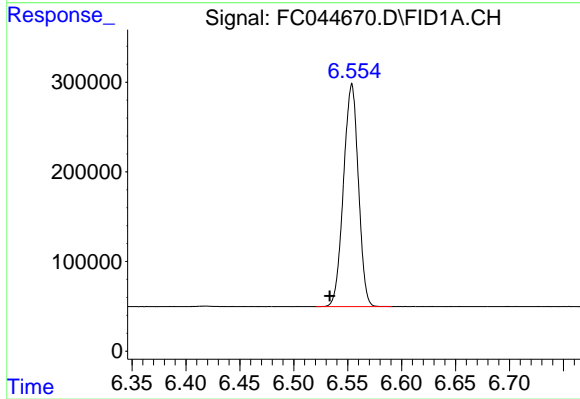
#1 n-Nonane (C9)
R.T.: 3.455 min
Delta R.T.: 0.026 min
Response: 2323691
Conc: 21.09 ug/ml



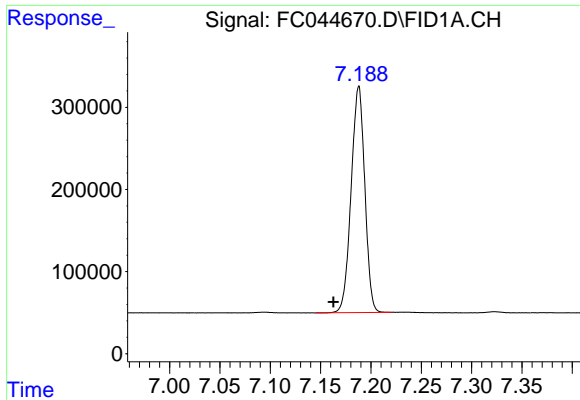
#2 n-Decane (C10)
R.T.: 4.530 min
Delta R.T.: 0.024 min
Response: 2380340
Conc: 21.43 ug/ml



#3 A~Naphthalene (C11.7)
R.T.: 6.131 min
Delta R.T.: 0.028 min
Response: 2600437
Conc: 20.90 ug/ml

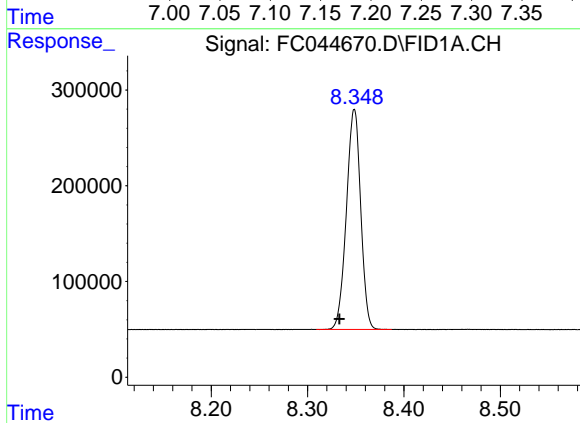


#4 n-Dodecane (C12)
R.T.: 6.554 min
Delta R.T.: 0.020 min
Response: 2384779
Conc: 21.20 ug/ml



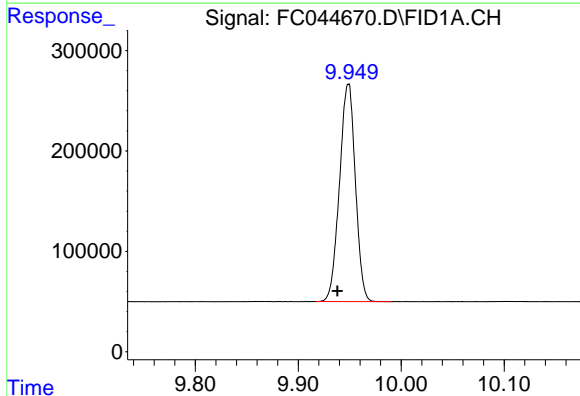
#5 A~2-methylnaphthalene (C12.89)

R.T.: 7.188 min
 Delta R.T.: 0.025 min
 Response: 2596957
 Conc: 20.59 ug/ml



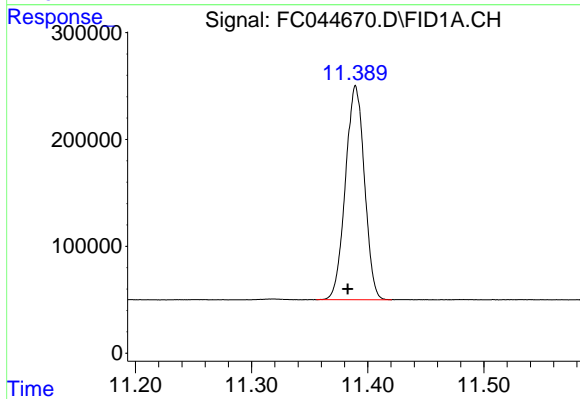
#6 n-Tetradecane (C14)

R.T.: 8.349 min
 Delta R.T.: 0.016 min
 Response: 2359464
 Conc: 20.86 ug/ml



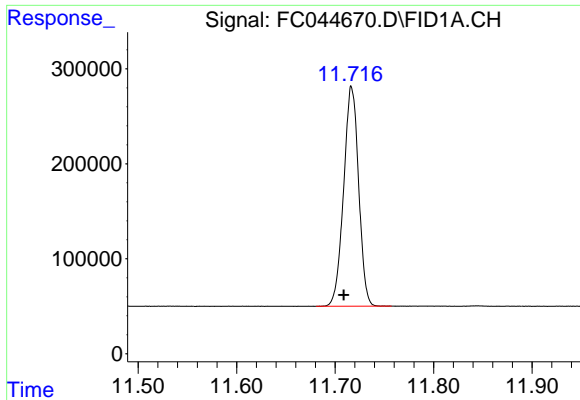
#7 n-Hexadecane (C16)

R.T.: 9.949 min
 Delta R.T.: 0.010 min
 Response: 2326140
 Conc: 20.36 ug/ml



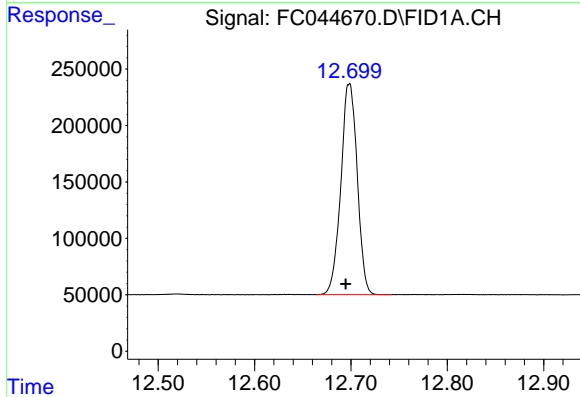
#8 n-Octadecane (C18)

R.T.: 11.390 min
 Delta R.T.: 0.007 min
 Response: 2276055
 Conc: 19.88 ug/ml



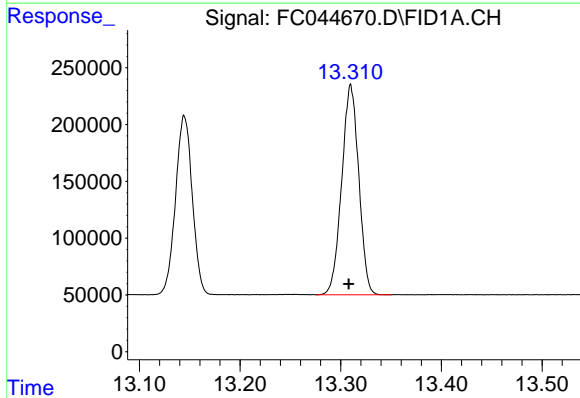
#9 ortho-Terphenyl (SURR)

R.T.: 11.717 min
 Delta R.T.: 0.008 min
 Response: 2446712
 Conc: 16.79 ug/ml



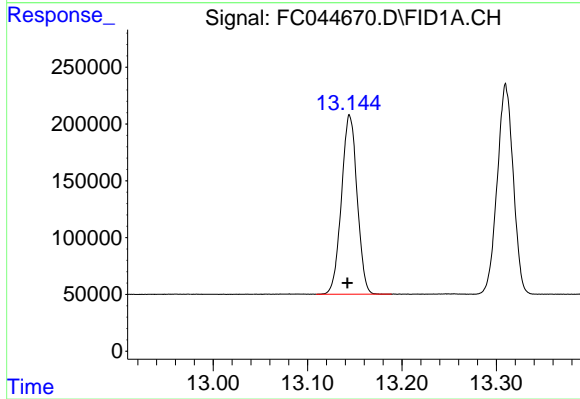
#10 n-Eicosane (C20)

R.T.: 12.698 min
 Delta R.T.: 0.004 min
 Response: 2200238
 Conc: 19.29 ug/ml



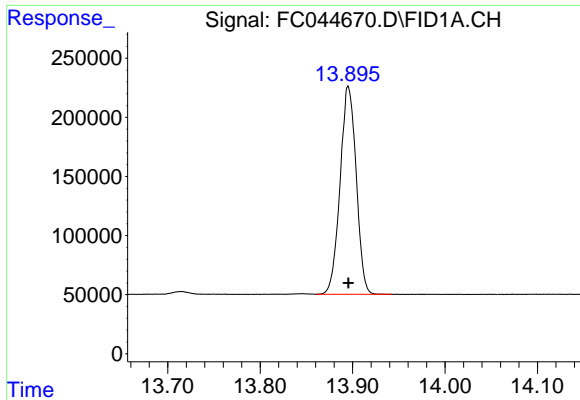
#11 n-Heneicosane (C21)

R.T.: 13.310 min
 Delta R.T.: 0.002 min
 Response: 2177142
 Conc: 18.98 ug/ml



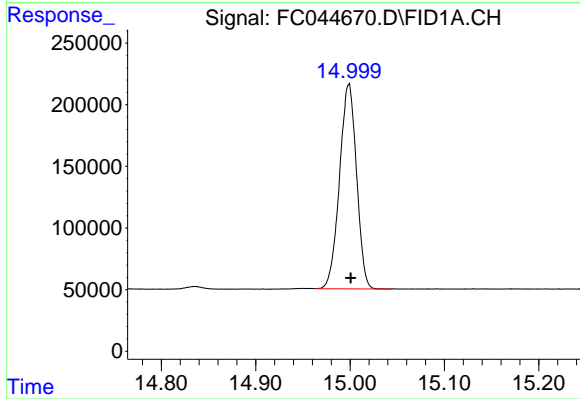
#12 1-chlorooctadecane (SURR)

R.T.: 13.145 min
 Delta R.T.: 0.002 min
 Response: 1819571
 Conc: 16.27 ug/ml



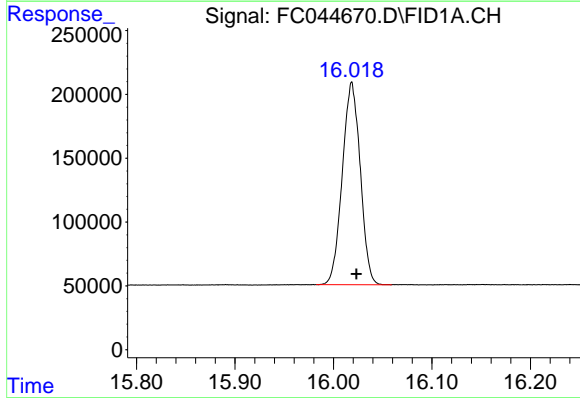
#13 n-Docosane (C22)

R.T.: 13.895 min
Delta R.T.: 0.000 min
Response: 2130225
Conc: 18.76 ug/ml



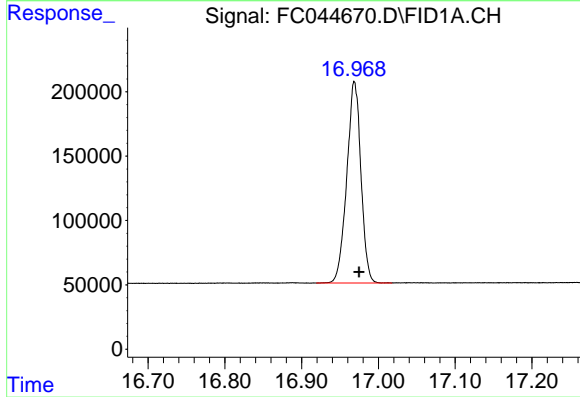
#14 n-Tetracosane (C24)

R.T.: 14.999 min
Delta R.T.: -0.002 min
Response: 2081328
Conc: 18.41 ug/ml



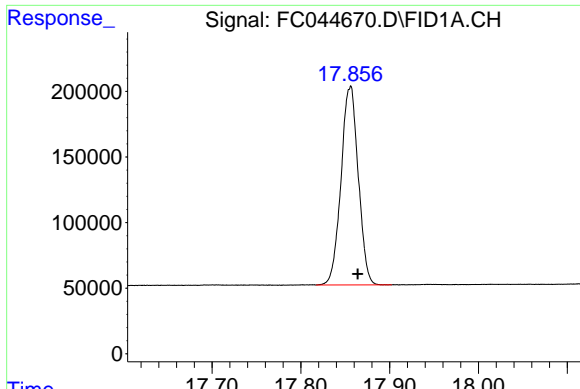
#15 n-Hexacosane (C26)

R.T.: 16.019 min
Delta R.T.: -0.005 min
Response: 2009734
Conc: 18.16 ug/ml



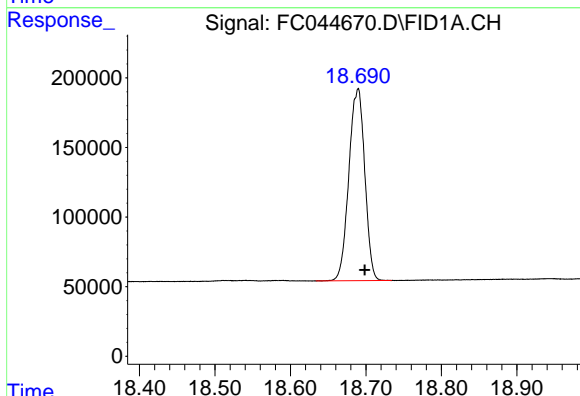
#16 n-Octacosane (C28)

R.T.: 16.969 min
Delta R.T.: -0.006 min
Response: 2003389
Conc: 18.49 ug/ml



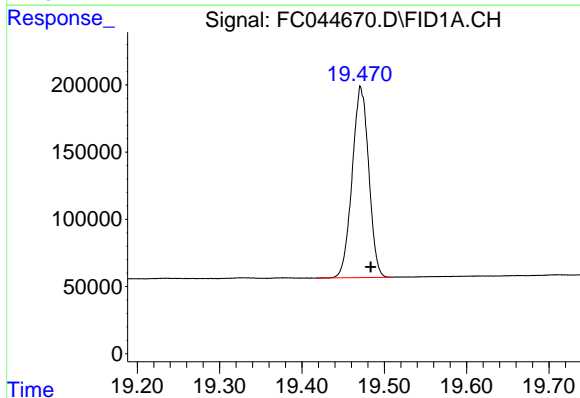
#17 n-Tricontane (C30)

R.T.: 17.856 min
Delta R.T.: -0.009 min
Response: 2039469
Conc: 19.27 ug/ml



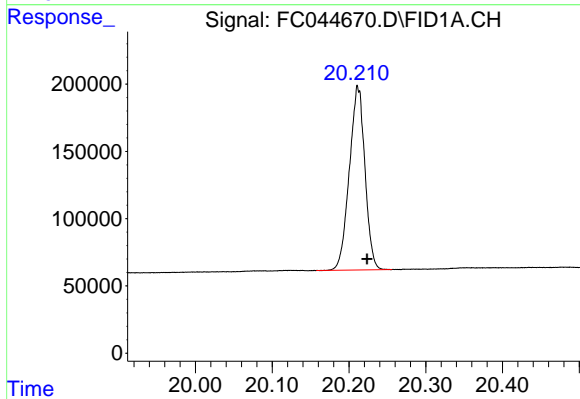
#18 n-Dotriacontane (C32)

R.T.: 18.690 min
Delta R.T.: -0.009 min
Response: 2016391
Conc: 20.02 ug/ml



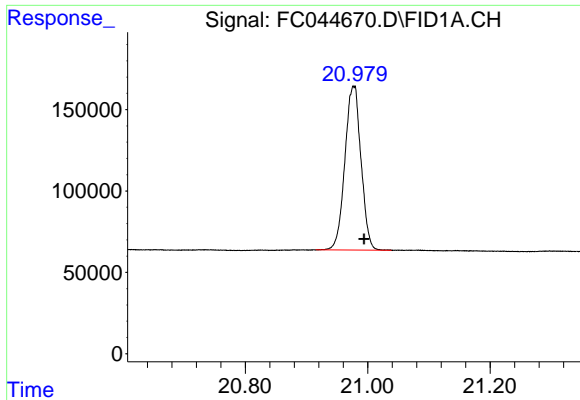
#19 n-Tetratriacontane (C34)

R.T.: 19.471 min
Delta R.T.: -0.012 min
Response: 1986313
Conc: 21.18 ug/ml



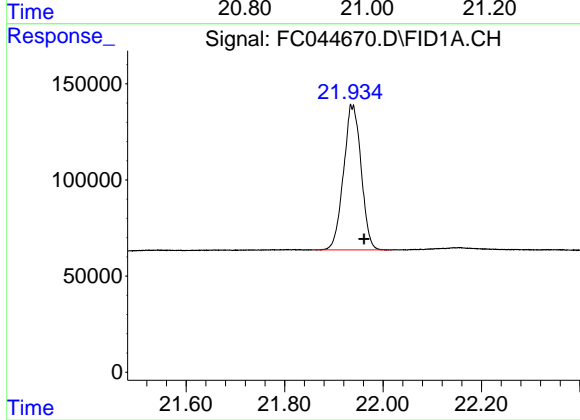
#20 n-Hexatriacontane (C36)

R.T.: 20.212 min
Delta R.T.: -0.012 min
Response: 1928743
Conc: 22.22 ug/ml



#21 n-Octatriacontane (C38)

R.T.: 20.978 min
Delta R.T.: -0.016 min
Response: 1841444
Conc: 22.84 ug/ml



#22 n-Tetracontane (C40)

R.T.: 21.939 min
Delta R.T.: -0.022 min
Response: 1867811
Conc: 22.10 ug/ml